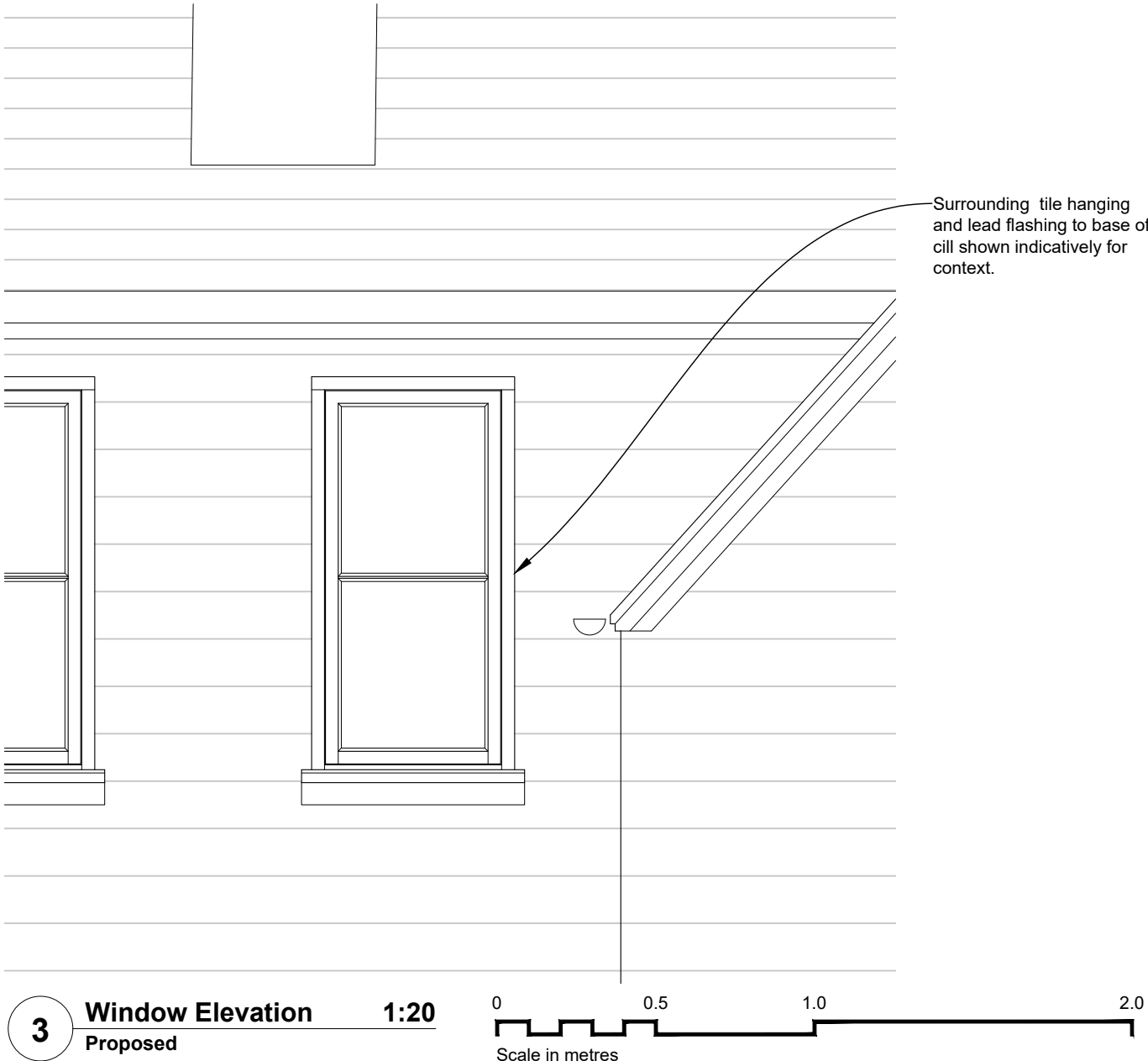
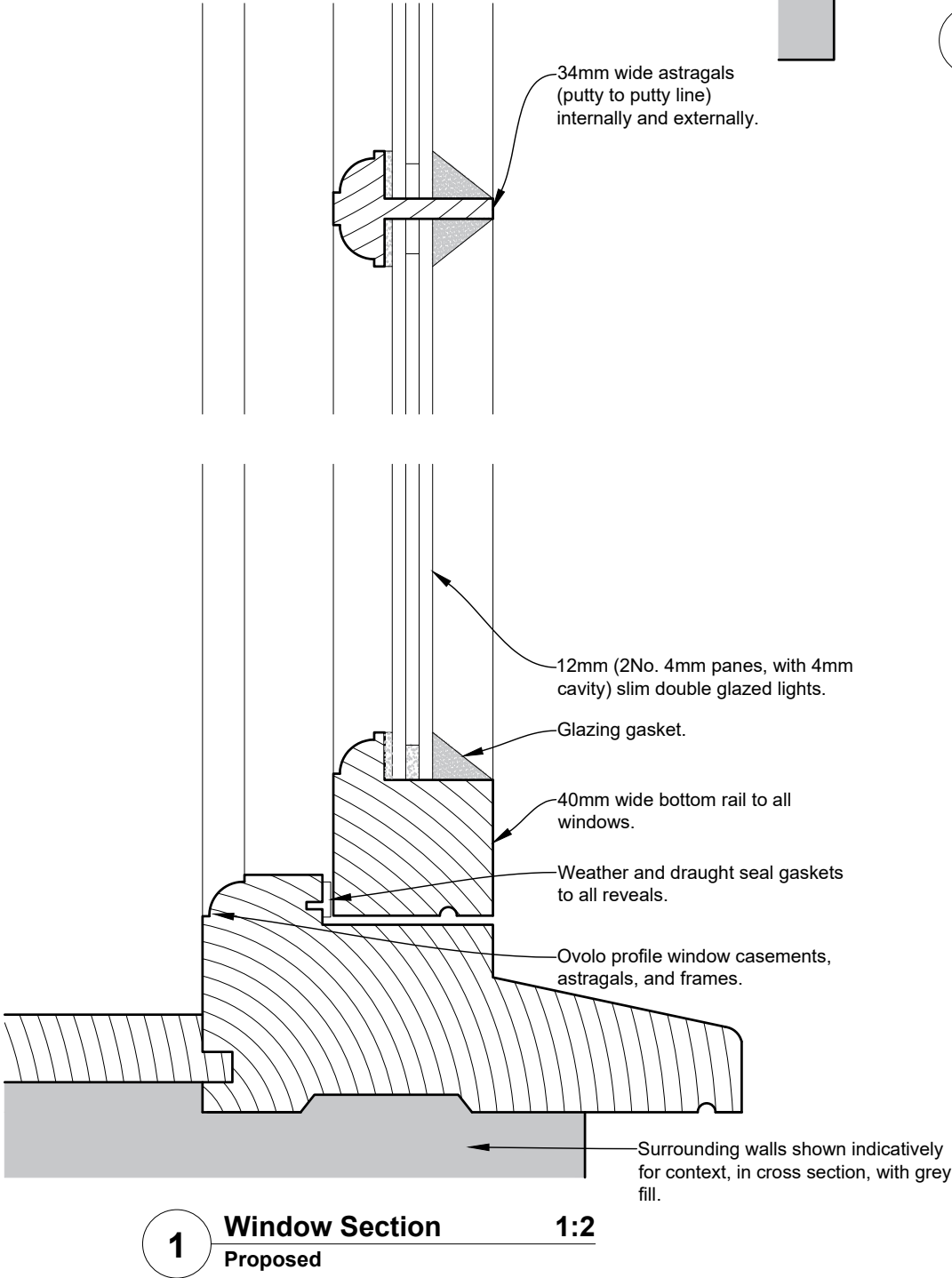
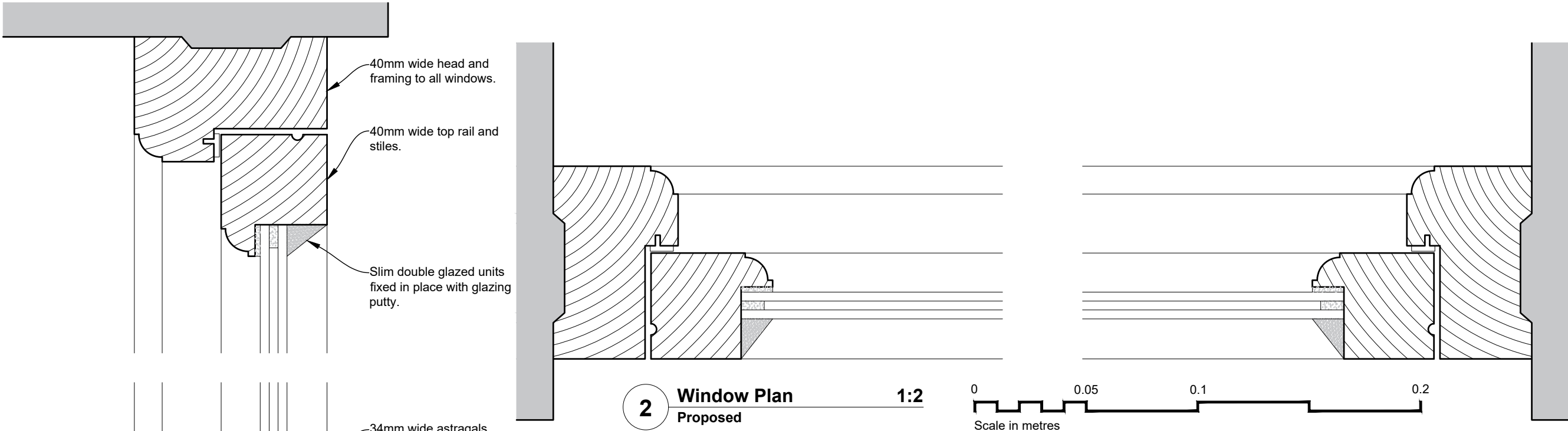


Drawing Specific Notes:

- The timber profiles and details are shared across the proposed new timber framed double glazed windows, and are to match existing windows, with minimal frame thicknesses.
- All windows are proposed to be built of dimensionally stable Accoya acetylated softwood, or hardwood.
- The set back dormer windows are shown here.



CEROWSKI ARCHITECTS

East Grinstead, West Sussex
tel. 07495 980 757
jonathan@cerowski.co.uk

Client:
Cuckfield Cottage Homes Trust

Project:
The Cuckfield Cottage Homes
Church Platt, Cuckfield, RH17 5LA

Drawing:
Proposed
Casement Window Details 1

Scale	Drawn By	Checked By	Issued For
1:20/1:2@A3	JKC	HEC	Planning
Drawing No.	Revision		

CUCO 150 /