



# Land East of Lunce's Hill, Haywards Heath, West Sussex

**Residential Travel Plan**

**Revision B**

On behalf of **Catesby Strategic Land Limited and Rurban Estates Limited**

Project Ref: 332611520 | Date: December 2025

---

Registered Office: Buckingham Court Kingsmead Business Park, London Road, High Wycombe, Buckinghamshire, HP11 1JU  
Office Address: 11 Prospect Court, Courteenhall Road, Blisworth, Northampton NN7 3DG  
T: +44 (0)1604 878 300

## Document Control Sheet

**Project Name:** Land East of Lunce's Hill

**Project Ref:** 332611520

**Report Title:** Residential Travel Plan

**Date:** February 2025

	<b>Name</b>	<b>Position</b>	<b>Signature</b>	<b>Date</b>
<b>Prepared by:</b>	B Haydon	Assistant Transport Planner	<i>B Haydon</i>	February 2025
<b>Reviewed by:</b>	J Williams	Associate Transport Planner	<i>J Williams</i>	February 2025
<b>Approved by:</b>	N Fern	Director Transport Planning	<i>N Fern</i>	February 2025
<b>For and on behalf of Stantec UK Limited</b>				

<b>Revision</b>	<b>Date</b>	<b>Description</b>	<b>Prepared</b>	<b>Reviewed</b>	<b>Approved</b>
Revision A	September 2025	Updated Following WSCC Comments	B Haydon	N Fern	N Fern
Revision B	December 2025	Updated Following WSCC Comments	B Haydon	N Fern	N Fern
Revision C	February 2026	Updated Following WSCC Comments	B Haydon	N Fern	N Fern

This report has been prepared by Stantec UK Limited ('Stantec') on behalf of its client to whom this report is addressed ('Client') in connection with the project described in this report and takes into account the Client's particular instructions and requirements. This report was prepared in accordance with the professional services appointment under which Stantec was appointed by its Client. This report is not intended for and should not be relied on by any third party (i.e. parties other than the Client). Stantec accepts no duty or responsibility (including in negligence) to any party other than the Client and disclaims all liability of any nature whatsoever to any such party in respect of this report.

## Contents

<b>1</b>	<b>Introduction.....</b>	<b>1</b>
1.1	Background and Development Proposals .....	1
1.2	Purpose of the Residential Travel Plan (RTP) .....	1
1.3	Objectives .....	2
1.4	Structure of Residential Travel Plan .....	3
<b>2</b>	<b>Existing Conditions and Accessibility .....</b>	<b>4</b>
2.1	Introduction .....	4
2.2	Existing Pedestrian and Cycling Facilities .....	4
2.3	Existing Public Transport Facilities.....	5
2.4	Existing Local Amenities .....	7
<b>3</b>	<b>Review of Local and National Policy .....</b>	<b>11</b>
3.1	Introduction .....	11
3.2	National Policy and Guidance .....	11
3.3	Local Policy and Guidance .....	14
3.4	Summary .....	17
<b>4</b>	<b>Movement and Access Strategy .....</b>	<b>18</b>
4.1	Introduction .....	18
4.2	Pedestrian and Cycle Site Access Strategy .....	18
4.3	Public Transport Access Strategy .....	18
4.4	Cycle and Car Parking Strategy .....	19
<b>5</b>	<b>Travel Plan Measures and Promotional Strategy.....</b>	<b>20</b>
5.1	Introduction .....	20
5.2	Measures to Promote and Encourage Walking.....	20
5.3	Measures to Promote and Encourage Cycling.....	21
5.4	Measures to Promote and Encourage Public Transport Use.....	21
5.5	Measures to Promote and Encourage Car Sharing .....	21
5.6	Measures to Promote and Encourage Home Working.....	22
5.7	Measures to Reduce Retail Trips .....	22
5.8	Marketing and Promotion of the Travel Plan Measures .....	22
<b>6</b>	<b>Travel Plan Governance .....</b>	<b>25</b>
6.1	Introduction .....	25
6.2	Residential Travel Plan Coordinator.....	25
6.3	Ownership and Handover.....	26
<b>7</b>	<b>Targets, Monitoring and Review .....</b>	<b>27</b>
7.1	Introduction .....	27
7.2	Targets 27	
7.3	Base Mode Share .....	27
7.4	Assessment of Mode Shift.....	29

7.5	Monitoring and Review .....	30
7.6	Contingency Measures.....	31
<b>8</b>	<b>Implementation Process and Responsibilities .....</b>	<b>34</b>
8.1	Introduction .....	34
8.2	Indicative Implementation Programme.....	34
8.3	Responsibility for Specific Measures.....	34
8.4	Funding.....	36

## Appendices

Appendix A	Illustrative Masterplan
Appendix B	WSCC Cycle Journey Planner
Appendix C	Bus Timetables and Route Map
Appendix D	Useful Websites

This page is intentionally blank

# 1 Introduction

## 1.1 Background and Development Proposals

- 1.1.1 Stantec UK Ltd (Stantec) has been appointed by Catesby Strategic Land Limited and Rurban Estates Limited (The Applicants) to provide transport and highways advice to support an outline planning application (appearance, landscaping, layout and scale reserved), for the erection of up to 130 dwellings and associated infrastructure including spine road with access from the B2112 Lunce's Hill and network of internal roads and car and cycle parking, together with provision of open space, play facilities, utilities infrastructure, surface water drainage features and associated works. The location of the Site is shown in **Plate 1.1**, with the Illustrative Masterplan provided in **Appendix A**.

Plate 1.1 – Land East of Lunce's Hill Red Line Boundary and Site Location



- 1.1.2 The Site currently comprises agriculture land and is bound to the south by agricultural land; to the east by Hurst Wood; and to the north by small fields, existing and emerging development.
- 1.1.3 The development proposals consist of up to 130 dwellings and associated infrastructure, including open space, play facilities and landscaping.

## 1.2 Purpose of the Residential Travel Plan (RTP)

- 1.2.1 This RTP acts as the delivery mechanism for the travel demand management strategy for the Proposed Development. It considers the opportunities for sustainable travel choices afforded by the site's location, defines the objectives of the RTP, sets appropriate targets aimed at reducing single occupancy car trips to and from the development site, and proposes measures to achieve those targets. It also presents a strategy for monitoring the effectiveness of the RTP measures.

- 1.2.2 The RTP is a "live" document that will be reviewed and updated at key milestones in the development's implementation and occupation, to enable the delivery of targets and efficient allocation of the resources set aside for travel planning at the site.
- 1.2.3 Generally, the purpose of this RTP is to influence travel behaviour and achieve a shift towards increased use of sustainable transport modes (walking, cycling, public transport, car share etc.) for journeys to and from the Proposed Development. This will be achieved through a range of 'hard' and 'soft' measures and a long-term management strategy aimed at keeping the RTP relevant and effective.
- 1.2.4 In summary the RTP provides the following key information:
- i. a range of measures to be implemented across the Proposed Development to encourage sustainable travel choices;
  - ii. a programme for implementation of specific measures as the development progresses;
  - iii. a set of mode shift targets by which the effectiveness of the RTP will be measured;
  - iv. details of the monitoring, management and review of the RTP; and
  - v. details of contingency measures which may be implemented should the monitoring process reveal that targets are not being met.

### 1.3 Objectives

- 1.3.1 The key objectives of the RTP are to:
- i. reduce reliance on private car usage, with a long-term strategy of achieving a 20% mode shift away from single occupancy private car trips associated with the Proposed Development;
  - ii. ensure that all future residents at the development are aware of the range of sustainable travel options available to them;
  - iii. increase awareness of available sustainable travel options and their associated benefits amongst the residents i.e., health benefits, financial benefits, and environmental benefits such as reduced carbon impact and better local air quality;
  - iv. maximise safe access to alternative modes of travel such as walking, cycling, and public transport use, and promote and encourage car sharing;
  - v. build upon good urban design principles that maximise the permeability of the development for promoting alternative modes of travel such as walking, cycling, public transport use and car-sharing amongst residents;
  - vi. develop an on-going management and co-ordination process which will monitor and review changes towards achieving modal shift through the RTP; and
  - vii. reduce the adverse effects of transport on the environment and health.
- 1.3.2 In accordance with current best practice, this RTP adopts an "outcomes" based approach, with specific outcomes and targets set out, alongside a review and monitoring framework to assess progress towards these outcomes.

## 1.4 Structure of Residential Travel Plan

1.4.1 The RTP document follows the structure below:

- **Section 2** - details the existing transport network, services and facilities surrounding the Proposed Development.
- **Section 3** - details the relevant local and national policies and guidance relating to travel planning at the Proposed Development.
- **Section 4** - details the development proposal and infrastructure proposals aimed at improving accessibility to and from the site by sustainable modes of travel, such as walking, cycling, car sharing and the use of public transport.
- **Section 5** - details measures aimed at encouraging sustainable travel choices throughout the Proposed Development and the existing surrounding communities, and achieving the targets set out in the RTP. It also details how the identified measures are to be promoted.
- **Section 6** - details the appointment and the role of the RTP Coordinator.
- **Section 7** - details the RTP targets, as well as the monitoring and review regime for the RTP. It provides details on what information will be collated, the methods used to gather relevant information and the timing and period of monitoring and how overall performance will be measured.
- **Section 8** - details the responsibilities and implementation programme for delivery of the RTP measures.

## 2 Existing Conditions and Accessibility

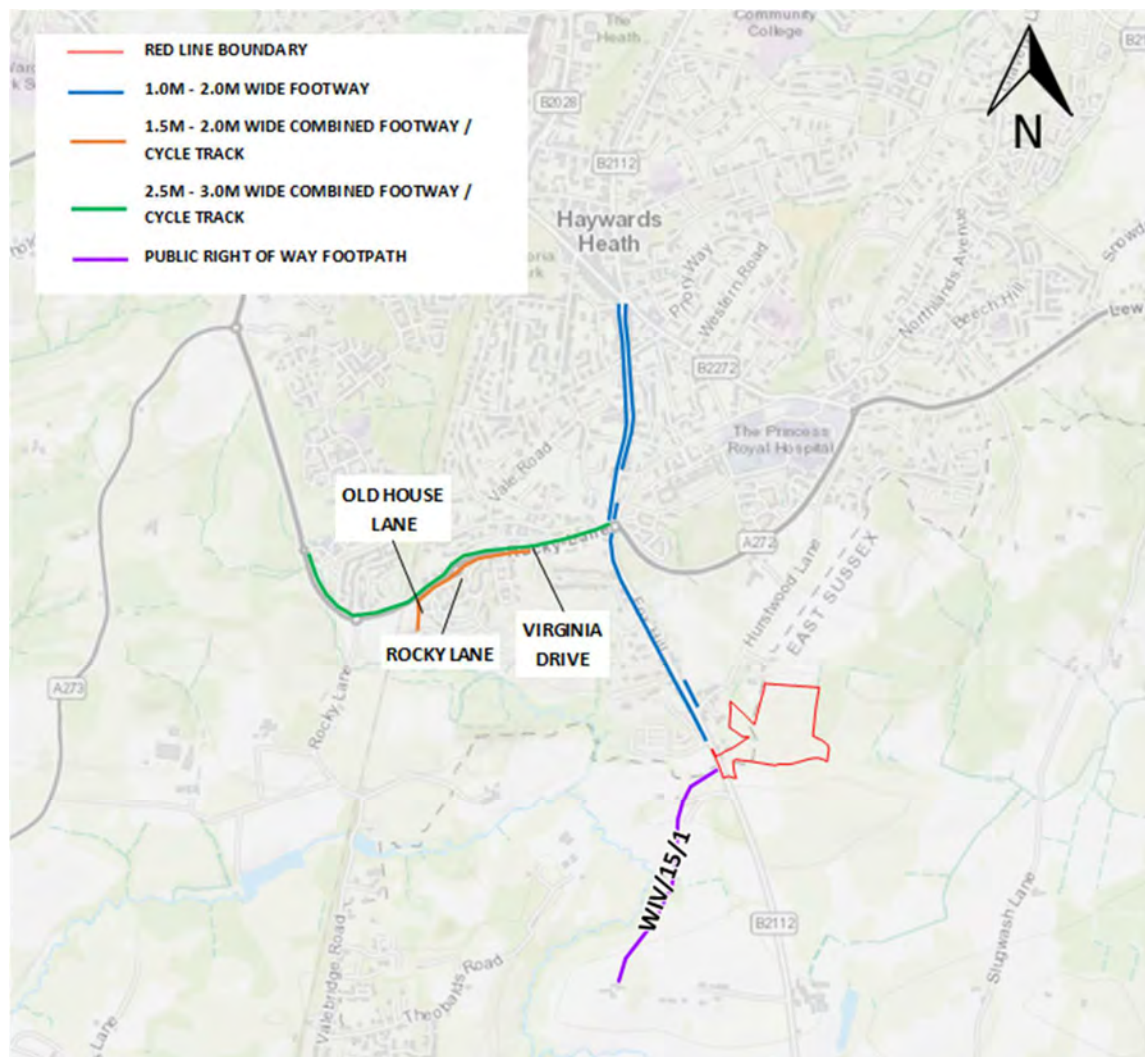
### 2.1 Introduction

2.1.1 This Section provides an assessment of the existing conditions within the vicinity of the Proposed Development from a transport perspective.

### 2.2 Existing Pedestrian and Cycling Facilities

2.2.1 This Section reviews the existing pedestrian and cycle facilities within the vicinity of the Site shown in **Plate 2.1**.

Plate 2.1 – Existing Pedestrian and Cycle Facilities



#### Pedestrian Facilities

2.2.2 There is an existing footway in the western verge of Lunce's Hill, which provides a connection between the Site and Haywards Heath Town Centre to the north, as shown on **Plate 2.1**.

## Public Rights of Way

- 2.2.3 Footpath WIV/15/1 is located to the west of the Site and offers onwards connections to Burgess Hill and Wivelsfield via a series of other footpaths. This footpath routes through fields and agricultural land. This footpath is shown on **Plate 2.1**.

## Cycle Facilities

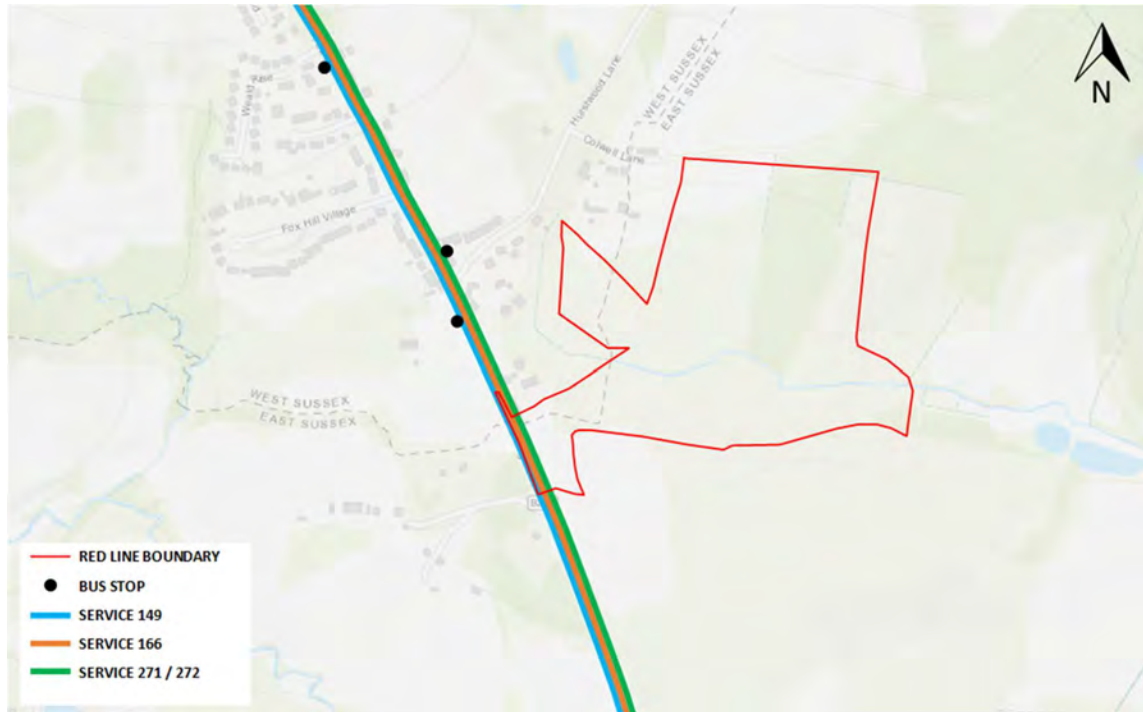
- 2.2.4 Cycle provision in the immediate area is generally on road, though the following dedicated facilities exist along the A272:
- A272 Rocky Lane – there is a combined footway / cycle track in the northern verge that runs from Fox Hill Roundabout to High Bank, generally 2.5-3.0m in width. Parts of the route are segregated from the road by hedgerow.
  - Between Virginia Drive and Rocky Drive, there is also a 2.0m wide combined footway / cycle track in the southern verge, which crosses into the western verge of Rocky Drive where the route is initially adjacent the A272, before routing south and providing two pedestrian / cycle accesses onto Old House Lane.
- 2.2.5 This provision is shown on **Plate 2.1** above.
- 2.2.6 The WSCC Cycle Journey Planner is an interactive interface which provides recommendations for quieter roads, traffic-free paths and short cuts that can be used by cyclists. The Planner allows the cyclist to select a starting and finishing point for their journey and allows them to select from three routes; the fastest route, the quietest route, or the balanced route. Once a route is selected, a turn-by-turn route is provided alongside the whole route on a map. An extract of this is provided in **Appendix B**.

## 2.3 Existing Public Transport Facilities

### Bus Facilities

- 2.3.1 The Proposed Development will benefit from a bus stop in close proximity to the Site, with the closest bus stop located on B2112 Fox Hill, to the south east of The Fox and Hounds Pub. This bus stop is within 300m-400m from the Centre of the Site and around 180m north of the site entrance. The location of the nearby bus stop is shown on **Plate 2.2** below.

Plate 2.2 – Bus Stop Locations and Bus Provision in the Vicinity of the Site



2.3.2 The Fox and Hounds stop benefits from a flag post, timetable information and a shelter with seating.

2.3.3 This stop serves several routes which are detailed below in **Table 2.1**.

Table 2.1 - Existing Bus Service in the vicinity of the Site (Correct as of December 2024)

Service	Operator	Route	Daytime Frequency	
			Monday - Saturday	Sunday
149	Seaford & District	Scaynes Hill – Haywards Heath – Lindfield – Wivelsfield – Chailey School	<u>Mon – Fri</u> 1 service daily at 0810 (Term Time Only) <u>Saturday</u> No Service	No Service
166	Compass Travel	Lewes – Plumpton – Wivelsfield – Haywards Heath	<u>Mon – Fri</u> 5 services daily at 0803, 1002, 1249, 1459, and 1741 <u>Saturday</u> 4 services daily at 1002, 1249, 1459, and 1737	No Service
271 / 272	Metrobus	Crawley – Brighton (Royal Sussex County Hospital)	<u>Mon – Fri</u> Service every 2 hours between 0725 and 2208 <u>Saturday</u> Service at 0701, then every 2 hours between 1145 and 1745	No Service

- 2.3.4 A timetable and route map for these services are provided in **Appendix B**.
- 2.3.5 Overall, this results in at least an hourly service to Haywards Heath with services combined, often more frequent than this. Haywards Heath Town Centre is generally a five minute journey on a bus, with the Rail Station an eight minute journey. The Site therefore benefits from being within easy access to the Town via sustainable transport, with low travel times.
- 2.3.6 Approximate journey times from the nearest bus stop to the Site to key local facilities are provided in **Table 2.2** below.

Table 2.2 – Accessibility to Key Local Facilities via Public Transport

Destination	Estimated Journey Time
Primary School (St Joseph's Catholic Primary School or St Wilfred's C of E Primary School)	11 minutes
Secondary School (Warden Park Academy)	21 minutes
Local Shop (Coop or Iceland)	9 minutes
Supermarket (Sainsbury's or Waitrose)	17 minutes
Healthcare (Princess Royal Hospital)	8 minutes
Railway Station	13 minutes
High Street	11 minutes

- 2.3.7 **Table 2.2** demonstrates that there are many key facilities within a short bus journey from the Site.

### Rail Facilities

- 2.3.8 The closest Railway Station to the Site is Haywards Heath Railway Station, located approximately 3km north of the Site.
- 2.3.9 Approximately 100m east of the Railway Station on the B2028 there is a bus stop which is served by the 166 and 271 / 272 services, both of which can be accessed via a short 300m walk from the centre of the Site to the bus stops adjacent the Fox and Hounds.
- 2.3.10 Haywards Heath Railway Station is on the Brighton Main Line and is managed by Southern. It has four platforms and offers the following typical off-peak services:
- Six trains per hour to Brighton;
  - Two trains per hour to London Victoria;
  - Two trains per hour to Bedford via London Bridge;
  - Two trains per hour to Eastbourne; and
  - Two trains per hour to Cambridge.
- 2.3.11 The train to Brighton takes approximately 17 minutes, and the train to Eastbourne approximately 40 minutes.

## 2.4 Existing Local Amenities

- 2.4.1 The Institution of Highways and Transportation in its 'Guidelines for Providing for Journeys on Foot' (2000) suggests that an average walking speed of 1.4m/s can be assumed, and Local

Transport Note 1/86 suggests 4.5m/s for cyclists. To assess the potential for short car trips from the Site to local facilities in the vicinity of the development to be replaced by either walking or cycling, the accessibility of the Site to key health, retail, leisure, education, and employment facilities has been assessed in **Table 2.3**.

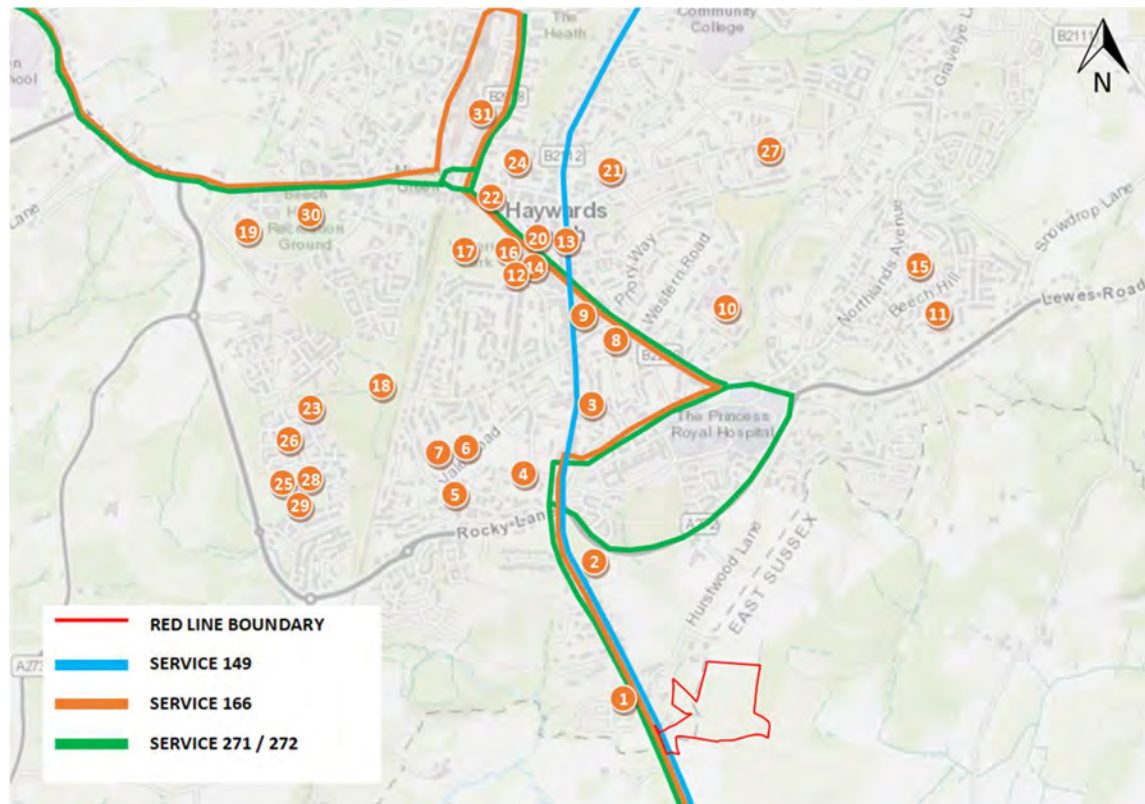
2.4.2 The distance has been measured from the centre of the site.

Table 2.3 – Local Amenities within Walking and Cycling Distance of the Site

Plate Ref.	Facility	Distance	Walking Time	Cycling Time
1	The Fox and Hounds	0.5km	6 mins	2 mins
2	Anscombe Woods	1.4km	17 mins	6 mins
3	Sainsbury's Local	1.7km	21 mins	7 mins
4	Sandy Vale Open Space	1.7km	21 mins	7 mins
5	The Vale Surgery	1.8km	22 mins	7 mins
6	The Ascension Church	1.9km	23 mins	8 mins
7	Ashenground Community Centre	2.0km	24 mins	8 mins
8	Kents Road Church	2.0km	24 mins	8 mins
9	Haywards Heath Baptist Church	2.1km	25 mins	8 mins
10	St Wilfrid's C of E Primary School	2.2km	27 mins	9 mins
11	Northlands Wood Primary Academy	2.2km	27 mins	9 mins
12	United Reformed Church	2.3km	28 mins	9 mins
13	St Joseph's Catholic Primary School	2.4km	29 mins	9 mins
14	Haywards Heath Post Office	2.4km	29 mins	9 mins
15	Tesco Express	2.4km	29 mins	9 mins
16	Iceland	2.5km	30 mins	10 mins
17	Victoria Park	2.6km	31 mins	10 mins
18	Ashenground Park	2.6km	31 mins	10 mins
19	Downlands Park	2.7km	31 mins	10 mins
20	The Centenary Hall	2.7km	33 mins	10 mins
21	Warden Park Primary Academy	2.8km	34 mins	11 mins
22	St Wilfrid's Church	2.8km	34 mins	11 mins
23	Bolnore Village Primary School	3.0km	36 mins	12 mins
24	Newton Surgery	3.0km	36 mins	12 mins
25	Bolnore Village Pre School	3.1km	37 mins	12 mins
26	Co-op Food	3.1km	37 mins	12 mins
27	Morrisons Daily	3.1km	37 mins	12 mins
28	The Woodside	3.1km	37 mins	12 mins
29	Grace Church	3.1km	37 mins	12 mins
30	Beech Hurst Gardens	3.3km	40 mins	13 mins
31	Haywards Heath Railway Station	3.6km	44 mins	14 mins

2.4.3 **Table 2.3** shows that there are a variety of amenities available within both walking and cycling distance, but also the bus services detailed in **Table 2.1** above which are shown alongside the facilities listed above on **Plate 2.3**.

Plate 2.3 – Local facilities in the Vicinity of the Site



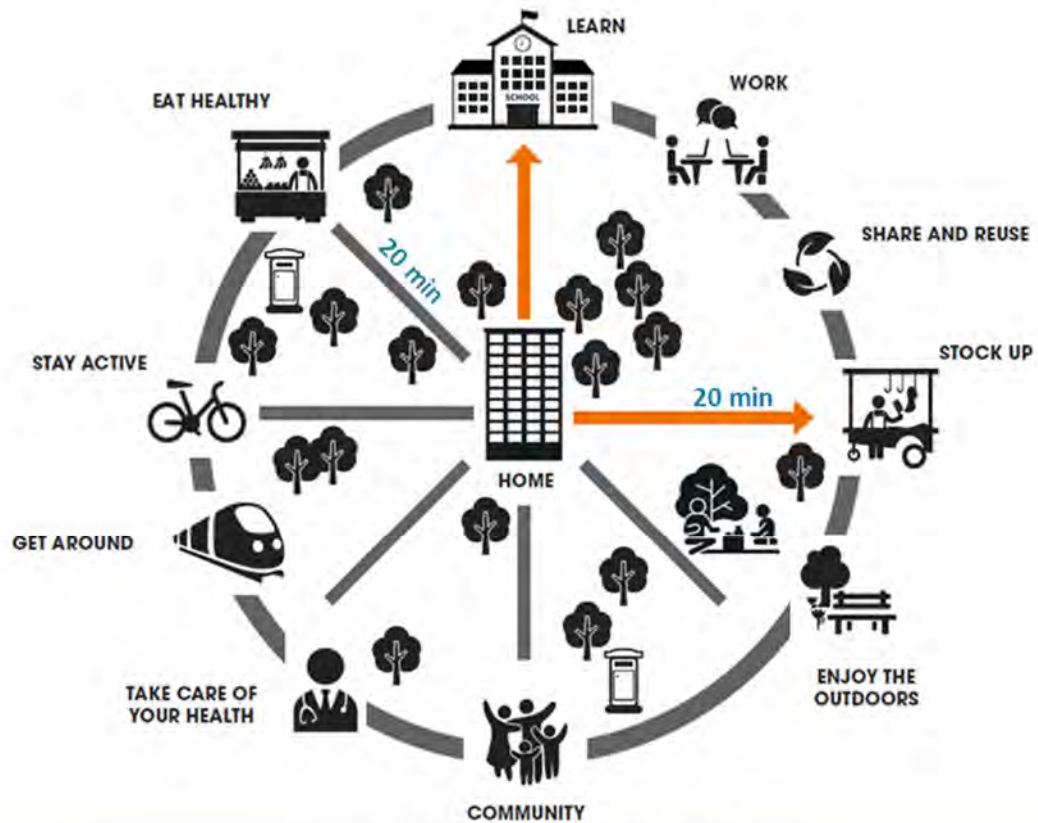
2.4.4 Although many of the facilities listed above are not within the immediate area, the Site lies within comparable distance to the previously consented Spring Bank development located to the south of the Proposed Development. In 2022, WSCC recognised that despite Spring Bank's location on the edge of town, there are opportunities for car journeys to be replaced with other modes of transportation.

### 20-Minute Neighbourhood

2.4.5 The Proposed Development supports the aims of the '20-Minute Neighbourhood' concept, which has risen in popularity in recent years due to the Covid-19 pandemic highlighting the importance of communities being well-served within their immediate neighbourhood. The idea is that residents should have access to most, if not all, of their needs within a short walk or cycle of their homes.

2.4.6 **Plate 2.4** shows the key features when creating a 20-Minute Neighbourhood.

Plate 2.4 – Key Features of 20-Minute Neighbourhoods



**Table 2.2** demonstrates that there are a wide range of local facilities within a 20-minute cycle distance. Although the majority of facilities lie outside of the 20-minute walking distance, the Site is well connected to public transport which offers journey times to many key facilities within 20 minutes.

## 3 Review of Local and National Policy

### 3.1 Introduction

- 3.1.1 This section reviews existing national and local policy, guidance, and strategies relating to transport, and provides a summary assessment of how the Proposed Development accords with these policies.
- 3.1.2 The following documents have been reviewed within this section:

#### National Policy and Guidance

- National Planning Policy Framework (December 2024)
- Planning Practice Guidance - Travel Plans, Transport Assessment and Statements (March 2014)
- Highways England - The Strategic Road Network: Planning for the future (September 2015)
- Highways Agency (HA) - Circular 02/2013: The Strategic Road Network and the Delivery of Sustainable Development

#### Local Policy and Guidance

- East Sussex County Council Local Transport Plan 3 2011 - 2026 (May 2011)
- East Sussex County Council – Travel Plans for Development (February 2020)
- West Sussex County Council Active Travel Strategy 2024-2036 (2024)

### 3.2 National Policy and Guidance

#### National Planning Policy Framework (December 2023)

- 3.2.1 The National Planning Policy Framework (NPPF) sets out the Government's planning policies for England and how these should be applied. The Government published proposed reforms to the NPPF in July 2024. Following consultation, a revised version of the NPPF was adopted in December 2024.
- 3.2.2 In respect of considering development proposals, paragraph 115 states:

*"In assessing sites that may be allocated for development in plans, or specific applications for development, it should be ensured that:*

*(a) sustainable transport modes are prioritised taking account of the vision for the site, the type of development and its location;*

*(b) safe and suitable access to the site can be achieved for all users;*

*(c) the design of streets, parking areas, other transport elements and the content of associated standards reflects current national guidance, including the National Design Guide and the National Model Design Code 48 ; and*

*(d) any significant impacts from the development on the transport network (in terms of capacity and congestion), or on highway safety, can be cost effectively mitigated to an acceptable degree through a vision-led approach."*

3.2.3 The proposals identified within this Residential Travel Plan are in accordance with the latest NPPF.

3.2.1 Paragraph 118 refers to the need for a Travel Plan:

*"All developments that will generate significant amounts of movement should be required to provide a travel plan, and the application should be supported by a vision-led transport statement or transport assessment so that the likely impacts of the proposal can be assessed."*

3.2.2 The provision of this Residential Travel Plan adheres to Paragraph 118.

### **Planning Practice Guidance - Travel Plans, Transport Assessment and Statements (March 2014)**

3.2.3 This guidance supersedes earlier guidance published by the Department for 2.4.1 Transport in 2009 ('Good Practice Guidelines: Delivering Travel Plans through the Planning Process') and has been prepared in consultation with Department for Communities and Local Government (DCLG), bringing together current practice from examples from around the country.

3.2.4 The guidelines cover, in particular:

- when is a travel plan required;
- how should the need for and scope of a travel plan be established;
- what information should be included in travel plans; and
- how should travel plans be monitored.

3.2.5 The planning practice guidance provides advice on what information should be included in Travel Plans and on how it should be monitored in paragraphs 011 and 012 respectively. Paragraph 011 of the guidance states that:

*"Travel Plans should identify the specific required outcomes, targets and measures, and set out clear future monitoring and management arrangements all of which should be proportionate. They should also consider what additional measures may be required to offset unacceptable impacts if the targets should not be met.*

*Travel Plans should set explicit outcomes rather than just identify processes to be followed (such as encouraging active travel or supporting the use of low emission vehicles). They should address all journeys resulting from a proposed development by anyone who may need to visit or stay and they should seek to fit in with wider strategies for transport in the area. They should evaluate and consider:*

*benchmark travel data including trip generation databases;*

- *information concerning the nature of the proposed development and the forecast level of trips by all modes of transport likely to be associated with the development;*
- *relevant information about existing travel habits in the surrounding area;*

- *proposals to reduce the need for travel to and from the site via all modes of transport; and*
- *provision of improved public transport services.*

*They may also include:*

- *parking strategy options (if appropriate - and having regard to national policy on parking standards and the need to avoid unfairly penalising motorists); and*
- *proposals to enhance the use of existing, new and improved public transport services and facilities for cycling and walking both by users of the development and by the wider community (including possible financial incentives)."*

### **Highways England - The Strategic Road Network: Planning for the future (September 2015)**

3.2.6 In September 2015, Highways England (now National Highways) published a document that describes the approach Highways England take to engaging in the planning system, and the issues Highways England has to consider when reviewing planning applications and draft planning documents.

3.2.7 This document reflects the same technical and policy requirements as contained within Circular 02/2013. However, the document goes further by setting out how constructive partnerships between Highways England, local authorities, and developers should work as development plans and projects are brought forward.

3.2.8 A key message from the document is for developers to put forward initiatives that reduce the traffic impact of proposals by supporting the promotion of sustainable transport and the development of accessible sites.

*"The preparation, implementation, monitoring and updating of a robust travel plan that promotes the use of sustainable transport modes (such as walking, cycling and public transport) is an effective means of managing the impact of development on the road network, and reducing the need for major transport infrastructure."*

3.2.9 This Residential Travel Plan has been prepared in line with this document, with early consultation undertaken with Highways England.

### **Highways Agency (now National Highways) – Circular 02/2013: The Strategic Road Network and the Delivery of Sustainable Development**

3.2.10 Circular 02/2013 sets out the way in which the "Highways Agency will engage with...the development industry to deliver sustainable development...whilst safeguarding the primary purpose of the strategic road network."

3.2.11 Paragraphs 25-31 which deal with "Impact Assessment, travel plans and demand management", of which the key points with relation to this site are outlined below:

*Paragraph 26: "The Highways Agency expects the promoters of development to put forward initiatives that manage down the traffic impact of proposals to support the promotion of sustainable transport and the development of accessible sites."*

*Paragraph 28: "The preparation and implementation of a robust travel plan that promotes use of sustainable transport modes such as walking, cycling and public transport is an effective means of managing the impact of development on the road network, and reducing the need for major transport infrastructure."*

- 3.2.12 The Travel Plan for the proposed residential development includes measures to promote and encourage sustainable modes in order to manage the impact of development on the road network - these are summarised later in this document. This Travel Plan is therefore consistent with the key principles of Circular 02/2013.

### 3.3 Local Policy and Guidance

#### East Sussex County Council Local Transport Plan 3 2011 - 2026 (May 2011)

- 3.3.1 The ESCC's third Local Transport Plan (LTP) provides a framework for the delivery of an integrated transport strategy linked to national transport priorities and local objectives through a series of programmes. The overarching objectives of the LTP reflect both local and national transport aspirations; including:

- *"Improve economic competitiveness and growth*
- *Improve safety, health and security*
- *Tackle climate change providing sustainable transport opportunities to enhance social inclusion; and*
- *Improve accessibility and enhance social inclusion*
- *Improve quality of life."*

- 3.3.2 These five overarching objectives are underpinned by the following ten transport specific objectives:

- *"Improve strategic and local connectivity of communities to facilitate economic and physical growth and renewal through the Local Enterprise Partnership and Local Development Framework process;*
- *Reduce congestion by improving the efficiency of the transport network and encouraging greater use of sustainable modes of transport;*
- *Improve maintenance and efficient management of the transport network;*
- *Improve road safety for vulnerable road users - pedestrians, cyclists, motorcyclists and horse riders;*
- *Reduce the number of people killed and seriously injured (KSIs) in road crashes;*
- *Reduce greenhouse gas emissions, local air pollution and noise from transport;*
- *Increase the resilience of transport infrastructure and services to the effects of climate change;*
- *Contribute to the protection and enhancement of the local natural and built environment;*
- *Improve access to jobs, services and leisure, and*
- *Improve personal health and well-being by encouraging and enabling increased physical activity through active travel (i.e. walking and cycling)."*

- 3.3.3 The vision of the LTP is:

*"To make East Sussex a prosperous county, where an effective, well managed transport infrastructure and improved travel choices help businesses to thrive and deliver better access to jobs and services, safer, healthier, sustainable inclusive communities and a high quality environment."*

- 3.3.4 In relation to travel planning, the LTP emphasises the key role that Travel Plans play in assisting to encourage travel behaviour by:

*"providing people with better information about their existing travel options more effectively or providing transport services that are clearly closely on a particular target market, such as workplace, school or residential".*

### **East Sussex County Council Local Transport Plan 4 2024-2050 Draft (2024)**

- 3.3.5 East Sussex County Council's (ESCC's) Local Transport Plan 4 sets out the vision, objectives and strategy for the 26-year period between 2024 and 2050. It is currently published in draft status.
- 3.3.6 Objective 2: Support Healthier Lifestyles and Communities identifies the following outcomes:
- *"Increase the proportion of walking, wheeling, and cycling journeys*
  - *Increase active travel and public transport journeys through education, training, travel behaviour change initiatives and information*
  - *Redesign road space to balance the needs of different road users, including encouraging people to walk, wheel, cycle and use the bus*
  - *Improve access to green spaces, public rights of way and leisure and health facilities"*
- 3.3.7 The Proposed Development supports Objective 2 through the provision of this Residential Travel Plan which sets out a series of soft and hard measures to increase the number of residents using sustainable transport measures.
- 3.3.8 Regarding target mode shift, ESCC's LTP4 identifies a 19% mode shift target for their Core scenario and a 21% mode shift target for their Plus scenario.
- 3.3.9 The Proposed Development supports this by targeting a 20% mode shift, which falls between both scenarios.

### **East Sussex County Council – Travel Plans for Development (February 2020)**

- 3.3.10 This guidance document for developers aims to ensure that there is a consistent approach to Travel Plan implementation throughout the County, by setting out the procedures for assessing, securing and monitoring Travel Plans as part of the planning process.
- 3.3.11 The guidance also provides a recommended structure for Travel Plans and possible Travel Plan measures, to assist developers in creating their own respective ravel Plan documents.
- 3.3.12 The guidance advocates the *Better Planning, Better Transport, Better Places* document by CIHT (August 2019) which recommends a new way of determining transport mitigation for development. The 'decide and provide' approach whereby the objectives of sustainable development particularly with regard to transport are first defined by developers local authorities, and the means to achieve those objectives are agreed and secured.

- 3.3.13 The CIHT recommends that “*We must fully abandon predict and provide models of transport planning, and assess the Local Plan against health and well-being, lifestyle, and environmental criteria (including carbon emissions) – not just standard demographic and transport information...*”
- 3.3.14 The guidance states that East Sussex County Council takes an 'outcomes' approach to travel plans - in which specific outcomes and targets identified within the document. The measures and initiatives outline within the Travel Plan will need to be achieved, and can be subject to sanctions if these are not met.
- 3.3.15 The monitoring of a Travel Plan is an essential element identified within this guidance which states that it is necessary to monitor the performance of a Travel Plan when the development is operational.
- 3.3.16 For residential developments it is suggested that a baseline travel survey is carried out upon 50% of the development occupation. Annual monitoring surveys (multi-modal) should be conducted each year for five years following occupation. The requirements of the monitoring surveys - with relevance to residential developments - are summarised as:
- Inbound and outbound movements by all travel modes on a typical day;
  - Car occupancy;
  - On-site car parking supply and usage; and
  - Development details including Travel Plan measures.
- 3.3.17 The guidance states the results of the surveys should be fed into the TRICS database. Therefore, the monitoring process of the Travel Plan must be carried by SAM (Standard Assessment Methodology) - a monitoring system developed by TRICS, for a set fee.
- 3.3.18 With regards to the targets set within the Travel Plan, the guidance outlines that the targets need to take account of individual site characteristics, in addition to what has been achieved on other similar sites both locally and nationally.
- 3.3.19 The guidance does not provide specific targets for new residential developments to achieve, but states:
- Travel Plan targets should be clearly worded as measurements of the objectives and be compatible with the outcomes forecast by the TA/TS, assuming implementation of the Travel Plan.*
- Targets must be transparent, realistic and justified. They should also be SMART (Specific, Measurable, Achievable, Realistic and Timed).*
- 3.3.20 In relation to the marketing and promotion of the Travel Plan, the guidance states that a Travel Information Pack should be provided for prospective and actual homebuyers as part of the marketing and sale of homes. This is to be provided as one of the measures outlined within Residential Travel Plan.

### **West Sussex County Council Active Travel Strategy 2024-2036 (2024)**

- 3.3.21 West Sussex County Council's Active Travel Strategy builds on the Local Transport Plan, providing further detail on the approach and strategies regarding active travel.
- 3.3.22 Aim 2 of the Strategy focussed on reducing the need to travel by motorised vehicles, states:

*“...we will ensure active travel planning considers access to public transport services, including local bus and rail connections, to ensure door-to-door journeys by sustainable, low carbon forms of travel become the most viable and attractive option across the county.”*

3.3.23 This RTP supports Aim 2 of the Strategy by encouraging residents to use sustainable modes over private car trips.

3.3.24 Section 5.5 – Travel Plans for new developments states:

*“...these sites will be required to achieve (or improve upon) a maximum 12-hour weekday vehicle trip rate and must be monitored in accordance with the TRICS UK Standard Methodology for Travel Plans.”*

### **3.4 Summary**

3.4.1 Following the review of national and local policy, it is clear that the RTP for the Proposed Development can play an integral part in progress towards achieving these national and local transport objectives.

3.4.2 The measures and strategies outlined within this RTP are targeted towards reducing congestion by reducing the need to travel and promoting alternative sustainable modes of travel. These measures consist of both 'hard' and 'soft' solutions which will bring benefits to the whole site and the surrounding area and community.

3.4.3 It is considered that the overall travel demand management strategy defined in this RTP will play a key role in achieving the objectives of sustainable development policy.

## 4 Movement and Access Strategy

### 4.1 Introduction

- 4.1.1 As highlighted in Section 3, national and local planning / transport policy incorporates several objectives to integrate planning and transport at all levels.
- 4.1.2 This access and movement strategy seeks to improve accessibility for future residents at the site.
- 4.1.3 This section sets out the overall sustainable transport strategy for the Proposed Development and includes details of the travel demand management strategy to reduce single occupancy car trips to and from the Proposed Development and the surrounding area.

### 4.2 Pedestrian and Cycle Site Access Strategy

#### On-Site Strategy

- 4.2.1 The Site is proposed to be accessed by pedestrians and cyclists via a path in the northern verge of the Site Access, where cycle provision leaves the carriageway along the B2112 Fox Hill and joins a 3.0m wide combined footway / cycle track and enters the Site.
- 4.2.2 The site layout will be designed to be permeable for pedestrians and cyclists with routes aligned towards key pedestrian and cycle desire lines through the development linking to the external access point. The on-site design philosophy will take account of the Department for Transport's Manual for Streets regarding forward visibility at on-site junctions and the need to reduce traffic speed.
- 4.2.3 The provision of sustainable transport modes will be supported by a number of promotional measures and awareness campaigns provided as part of the travel demand management strategy for the site.

#### Off-Site Strategy

- 4.2.4 The site access design also incorporates a Puffin Crossing to the north of the Site, connecting pedestrians to the footway in the western verge of Fox Hill, where users can travel north to Haywards Heath, and to the bus stop on Fox Hill, located 300 metres from the centre of the Site.

### 4.3 Public Transport Access Strategy

- 4.3.1 The Proposed Development benefits from being within close proximity of existing bus stops that are approximately 300 metres from the centre of the Site or circa 180m north of the site access. These stops are served by frequent services to Haywards Heath Town Centre and onwards, with a journey time of approximately five minutes to Haywards Heath Town Centre and 8 minutes to the Railway Station, in addition to services provided further afield.
- 4.3.2 Although the Proposed Development proposes no additional public transport services, the improved patronage from the Site, conservatively estimated to be 4 passengers at peak times, will support the long-term viability of existing services.
- 4.3.3 The Travel Plan supporting the Proposed Development includes a series of soft measures to encourage residents to use public transport.

## 4.4 Cycle and Car Parking Strategy

- 4.4.1 The proposed cycle and car parking provision at the Proposed Development would be in accordance with ESCC's Guidance for Parking at New Residential Development (October 2017) and WSCC's Guidance on Parking at New Developments (September 2020).
- 4.4.2 The ESCC guidance (October 2017) states that due consideration should be given to local circumstances, accessibility and local car use levels. Therefore, the East Sussex Residential Parking demand calculator has been designed to calculate the number of parking spaces required at new residential development on a site-specific basis. This is based on 2011 Census Data including the location (ward, borough, district), dwelling type (houses, flats), tenure (private or affordable), dwelling size (number of bedrooms), and the way parking is provided (allocated or unallocated).
- 4.4.3 The recommended levels of cycle provision are also contained within the ESCC guidance document. This is provided below in **Table 4.1**, and the Proposed Development will accord with this guidance.
- 4.4.4 Each dwelling will also be provided with the facility to allow use of electric vehicles, with 'slow' charging points provided that run off a normal dwelling electricity supply. Further details will be included in any reserved matters application.

Table 4.1 - ESCC's Guidance for Parking at New Residential Development (October 2017) – Parking Provision Requirements

Dwelling Type	Number of Bedrooms	Cycle Provision per Unit
Flat	1 & 2	0.5 spaces if communal 1 space if individual
Flat	3 or more	1 space
House	1 & 2	2 spaces
House	3 or more	2 spaces

- 4.4.5 The WSCC guidance (September 2020) provides guidance on the number of spaces required for each Parking Behaviour Zone (PBZ). These zones are provided within the guidance for each area, with the Proposed Development falling under PBZ3 – Haywards Heath Franklands. However, the guidance does acknowledge that an alternative PBZ can be given consideration if it is determined to be more representative of the Site. As PBZ4 is rural in nature, consisting mainly of woodland and agricultural land, with very few dwellings located within this zone. Due to this, PBZ3 has also been considered in **Table 4.2** below.

Table 4.2 - WSCC's Guidance on Parking at New Developments (September 2020) – Parking Provision Requirements

Number of Bedrooms	Number of Habitable Rooms	PBZ3	PBZ4
1	1 to 3	0.9	0.9
2	4	1.3	1.1
3	5 to 6	1.8	1.7
4+	7 or more	2.5	2.2

- 4.4.6 The Proposed Development will accord with the above guidance once further details are available regarding the development at detailed design stage.

## 5 Travel Plan Measures and Promotional Strategy

### 5.1 Introduction

- 5.1.1 In order to meet the aims and objectives of this RTP, a number of 'soft' measures would be implemented, in conjunction with the infrastructure ('hard') measures identified in Section 4, to promote and encourage the use of sustainable travel modes (e.g. walking, cycling, public transport and car sharing) for journeys to and from the Proposed Development.
- 5.1.2 This section of the RTP sets out a range of proposed measures to promote sustainable travel throughout the Proposed Development. It also describes the process by which the RTP will be managed and implemented.
- 5.1.3 To ensure that the RTP is flexible to evolving needs, the success of the measures detailed in this section in achieving the RTP targets (see Section 7.2) will be reviewed annually as part of the Monitoring and Review process set out in Section 7.5. This process will ensure that the RTP resources are targeted at the most effective initiatives, and that measures are deliverable and appropriate.
- 5.1.4 The responsibilities for implementing these measures are set out in Section 8 of this RTP.

### 5.2 Measures to Promote and Encourage Walking

- 5.2.1 The following measures will be used to promote walking as a mode choice at the Proposed Development:
- issue 'Travel Information Packs' (see Section 5.8) to residents containing information on the health benefits of walking as an alternative to using a car, pedestrian safety (including local safe walking routes) and any existing walking groups and campaigns in the area;
  - encouraging occupants to participate in national events such as 'Walk to Work' week, 'Walk to School' week etc., these will be advertised on the development website and on the community notice board;
  - promoting the benefits of walking on the development website and in annual newsletters in terms of health, wellbeing, social networking, cost savings, and reduced environmental impact including carbon reduction and better local air quality;
  - the offer of high-visibility clothing to school children - to improve the visibility of vulnerable road users.
- 5.2.2 Promotion of walking (and scooters) would be particularly targeted at parents of school-age children, since school-related travel can account for a significant proportion of the total car-trips generated by a residential development.
- 5.2.3 The Residential Travel Plan Co-ordinator (RTPC) will seek to understand residents' views and concerns on the subject of walking to the local primary schools in order to identify initiatives that would encourage more parents and/or children to walk to school. This could be undertaken through annual monitoring surveys.
- 5.2.4 The RTPC will seek to set up a "walking bus" initiative amongst residents and will also consider other initiatives, such as providing children and parents with travel diaries with incentives to encourage walking and local events such as "walk to school" days.
- 5.2.5 The RTPC will also consider the scope for providing personal alarms to residents who request them, subject to an analysis of potential benefits following the first travel surveys.

### 5.3 Measures to Promote and Encourage Cycling

- 5.3.1 The following measures will be used to promote cycling as a mode choice at the Proposed Development:
- issue 'Travel Information Packs' (see Section 5.8) to residents containing information on the health benefits of cycling as an alternative to using a car, cycle safety (including local safe cycle routes), cycle training and any existing cycling groups and campaigns in the area;
  - encouraging occupants to participate in national events such as 'Cycle to Work' schemes, Bike Week etc., these will be advertised on the development website and on the community notice board;
  - providing residents with £150 cycle vouchers per household; and
  - promoting the benefits of cycling on the development website and in annual newsletters, in terms of health, wellbeing, social networking, cost savings, and reduced environmental impact including carbon reduction and better local air quality.
- 5.3.2 The RTPC will organise annual "Dr Bike" sessions to help individuals to maintain their bikes. These events can be helpful in encouraging more regular cycling.
- 5.3.3 The developer will monitor levels of cycle parking on-site and will increase the available cycle parking if there is the demand.
- 5.3.4 The RTPC would liaise with the local cycling officer within ESCC and would seek to promote local authority-sponsored cycling safety and training schemes amongst residents, particularly young people.
- 5.3.5 The RTPC will also liaise with local schools and retail facilities to investigate whether the existing cycle (and scooter) parking provision is adequate.

### 5.4 Measures to Promote and Encourage Public Transport Use

- 5.4.1 The following measures will be used to promote public transport as a mode choice at the Proposed Development.
- issue 'Travel Information Packs' (see Section 5.8) to residents with information on the financial, health and environmental benefits of using public transport as an alternative to using a car, and to provide advice on pedestrian safety. It will also contain the available public transport services and timetables in the area; and
  - provide public transport 'taster' tickets to residents to enable them to try travelling via bus via Compass Travel's 166 service or Metrobus' 271 / 272 service (value of £90 per dwelling).

### 5.5 Measures to Promote and Encourage Car Sharing

- 5.5.1 Car sharing can be an effective means of easing traffic congestion and facilitating the achievement of sustainable travel objectives. For residents that live in close proximity to one another and have common journey requirements, car sharing can represent an effective mechanism for reducing the volume of trips to and from work, school, and / or recreational activities.
- 5.5.2 Car sharing will be promoted amongst the residents of the development, particularly in relation to journey to work by making the "eastsussexcarshare.org"

(<https://liftshare.com/uk/community/eastsussexcarshare>) website freely available and funding a publicity campaign targeted at all residents of the Proposed Development.

- 5.5.3 This will also provide the opportunity for the local residents across the whole area to share car, cycling and walking trips, and in so doing, increase the potential to find travel partners across the area.
- 5.5.4 Measures to promote and encourage car sharing on-site that would be implemented include:
- <https://liftshare.com/uk/community/eastsussexcarshare> and 'car sharing' events such as Liftshare week, National Liftshare Day etc. to occupants via annual campaigns, information on notice boards, the Travel Information Packs and the development website;
  - an annual £250 prize draw for registered members on the <https://liftshare.com/uk/community/eastsussexcarshare> car share coffee mornings to help residents find potential car-share partners; and
  - disseminate newsletters showing regular case studies of car sharers, thereby ensuring the scheme gets appropriate coverage, and also the cost savings of car sharing.
- 5.5.5 The RTPC will engage with and assist residents in finding car share partners to those who are interested. Information on car sharing will be made available as part of the Travel Information Packs and on the development website.
- 5.5.6 Leaflets will also be provided to households in the immediate vicinity of the site.
- 5.5.7 In addition to promoting car sharing, residents will be provided with details on the Enterprise 'Car Club' which operates in the region, which allows residents to use cars provided by Enterprise on a pay-per-mile basis.

## **5.6 Measures to Promote and Encourage Home Working**

- 5.6.1 At part of the on-site infrastructure provision, each household will have broadband infrastructure, subject to availability to enable homeworking.
- 5.6.2 All the residential units will be provided with information emphasising the benefits of home working within the Travel Information Packs and on the development website.

## **5.7 Measures to Reduce Retail Trips**

- 5.7.1 In order to reduce the amount of retail trips generated by the Proposed Development, vouchers for two supermarket deliveries (delivery charges) will be offered to all households within the Travel Information Packs.

## **5.8 Marketing and Promotion of the Travel Plan Measures**

- 5.8.1 A vital component of the travel demand management strategy is to ensure that all residents are aware of the sustainable travel options available to them. The promotion of the Travel Plan will begin prior to the occupation and run throughout the life the Travel Plan. The main responsibility of marketing and promoting the RTP measures will lie with the RTPC.
- 5.8.2 Details of the RTP will be incorporated with the terms of sale or lease of dwellings. This will ensure that all future occupants are aware of the RTP and will facilitate the continuity of the RTP.
- 5.8.3 The RTPC will discuss and agree the format and content of the Travel Pack with the designated sustainable travel officer within MSDC / WSCC / ESCC prior to publication. The

- Travel Information Pack and its contents will be reviewed annually to ensure that all information contained within it remains current.
- 5.8.4 The Travel Information Packs will contain the following:
- the RTPC contact details;
  - a map of the local area highlighting local schools, shops, any areas of major employment, hospitals, doctor's surgeries, dentists, bus and rail stations, bus stops, and leisure facilities;
  - information about how to access key destinations by bus, including approximate journey times, route numbers, maps and timetables;
  - walking and cycling maps and information on journey times, route information etc. to key destinations and a cost comparison with car travel and parking;
  - information about areas served by any local rail station, including approximate journey times and a cost comparison with car travel and parking;
  - details about grocery home delivery services operated by local shops and supermarkets, including the benefits such services offer compared to private car travel, such as reduced CO<sub>2</sub> and greater convenience;
  - information on personalised journey planning services being offered by the RTPC;
  - car sharing opportunities and information on the <https://liftshare.com/uk/community/eastsussexcarshare>
- 5.8.5 In addition, a fixed "Community Information" display board shall be provided at a suitable location within the site (to be determined) which will provide information on local bus services, walking/cycle routes, current transport initiatives, RTPC contact details, etc. This information will also be contained on the development website which will be established by the developer and the RTPC. This will reinforce awareness of travel options on a continual basis and will also enable changes to local public transport services to be publicised.
- 5.8.6 A notice board will also be provided within the site show home which will provide details of the RTP to prospective buyers.
- 5.8.7 The information board will also be used to promote national and local events, such as "Bike Week", "Walk to Work Week" and "National Lift Share Day", supplemented by leaflet drops.
- 5.8.8 The RTPC will produce an annual newsletter, for distribution to all households.
- 5.8.9 The aim of this would be to provide on-going promotion of the RTP, to keep residents engaged with the RTP process and objectives, promote specific campaigns and promotions, and to foster a sense of ownership amongst the community. It will also enable information on RTP initiatives and changes to local transport services to be communicated to residents.
- 5.8.10 The health benefits of sustainable travel (walking and cycling) will be promoted periodically via the community notice board or, if appropriate, supplementary leaflet drops.
- 5.8.11 A list of a number of useful sustainable travel websites has been provided in **Appendix D**.
- 5.8.12 In addition, the RTPC will seek to hold regular meetings with local residents via initiatives such as:

- Travel induction sessions for new residents and the offer of personalised journey planning services; and,
- Car share coffee mornings or other social events to help residents find potential car-share partners.

5.8.13 These meetings would also help to engage residents in the RTP process and allow them to put forward their views and raise issues that affect them and the community.

## 6 Travel Plan Governance

### 6.1 Introduction

- 6.1.1 The appointment or nomination of a RTPC is crucial to the successful implementation and management of the RTP. The developer will be responsible for the efficient delivery of the RTP, and will be required to provide resources for a RTPC role, for the day to day implementation and management of the RTP. The duties of the appointed RTPC are set out below.

### 6.2 Residential Travel Plan Coordinator

- 6.2.1 As part of the pre-occupation stage of the development, a RTPC will be appointed / nominated and funded by the developer. The RTPC will be suitably skilled and will act as the main contact for all Travel Planning issues during the occupation phase of the development and the agreed RTP monitoring period.

- 6.2.2 The contact details of the appointed RTPC will be provided to all stakeholders (including ESCC) prior to occupation of any part of the development. The key responsibilities of the RTPC are:

- to implement, promote and market the RTP measures;
- to act as the main point of contact for the local authority and bus operators, and for anyone requiring transport advice or information relating to the Proposed Development;
- to coordinate the necessary data collection required to develop 'Travel Information Packs' for all new occupiers of the development. This may include but not be limited to the following; maps of local walking and cycling facilities in the area; public transport timetables; contact details for local bus and taxi companies; contact details for local authority travel-based initiatives and promotions; information about all local facilities in the area; as well as car sharing opportunities with Liftshare <https://liftshare.com/uk/community/eastsussexcarshare>
- to include sustainable transport information on the community notice board;
- to initiate the delivery of travel induction sessions which will provide personalised travel planning tailored to residents' needs by visiting each individual resident / dwelling on request;
- to implement and promote RTP related publicity and awareness events, with the aim or increasing the uptake of sustainable transport usage through the development;
- to conduct travel surveys for monitoring and reviewing purposes;
- to monitor the progress of the RTP towards its targets and to take action where appropriate to ensure targets are met;
- to keep up to date with issues and new initiatives that affect sustainable transport at the Proposed Development;
- to review and update the RTP on an annual basis / when required;
- to produce and submit annual RTP monitoring reports to WSCC / ESCC;

- to take forward the Travel Plan initiatives and introducing new measures where necessary; and
- to provide a focal point for the residents for community-based travel issues and liaise with residents and establish a formal Residents Steering Committee, to whom the RTP shall be handed over on expiry of the RTPC post.

### **6.3 Ownership and Handover**

- 6.3.1 In the short term, the ownership of the RTP lies with the developer through its appointed RTPC until the completion of the development and the RTP monitoring period.
- 6.3.2 In the long term, the ownership of the RTP will ultimately rest with the future residents at the Proposed Development, through a Residents Steering Committee. This Residents Steering Committee will be established by the RTPC as occupation at the site progresses. The RTPC will recruit volunteer sustainable travel "champions" who will help promote the Residential Travel Plan within the community.
- 6.3.3 The Residential Steering Committee will be led by the RTPC during the monitoring period, unless the mode shift target is met before this time. After the five-year period, the responsibility for reviewing and monitoring the travel plan will rest with the Residents Steering Committee. A sum of money will be set aside for the Residents Steering Committee to cover the cost to update the promotional materials for a further three years after handover.

## 7 Targets, Monitoring and Review

### 7.1 Introduction

- 7.1.1 An 'outcomes based approach' has been adopted in the setting of targets and milestones for the RTP. With this approach, the focus is placed on ensuring that the Travel Plan meets its agreed modal shift targets. The targets set in this RTP adhere to the SMART (Specific, Measurable, Achievable, Realistic and Time-bound) evaluation criteria.
- 7.1.2 The mechanisms by which the RTP will be managed and administered are also discussed in this section.
- 7.1.3 To ensure that the RTP is flexible to evolving needs, the measures will be reviewed annually as part of a Monitoring and Review process (see Section 7.5), which will ensure that Travel Plan resources are targeted at the most effective initiatives. The developer is required to commit to meeting these targets, and agree to a monitoring and review regime.

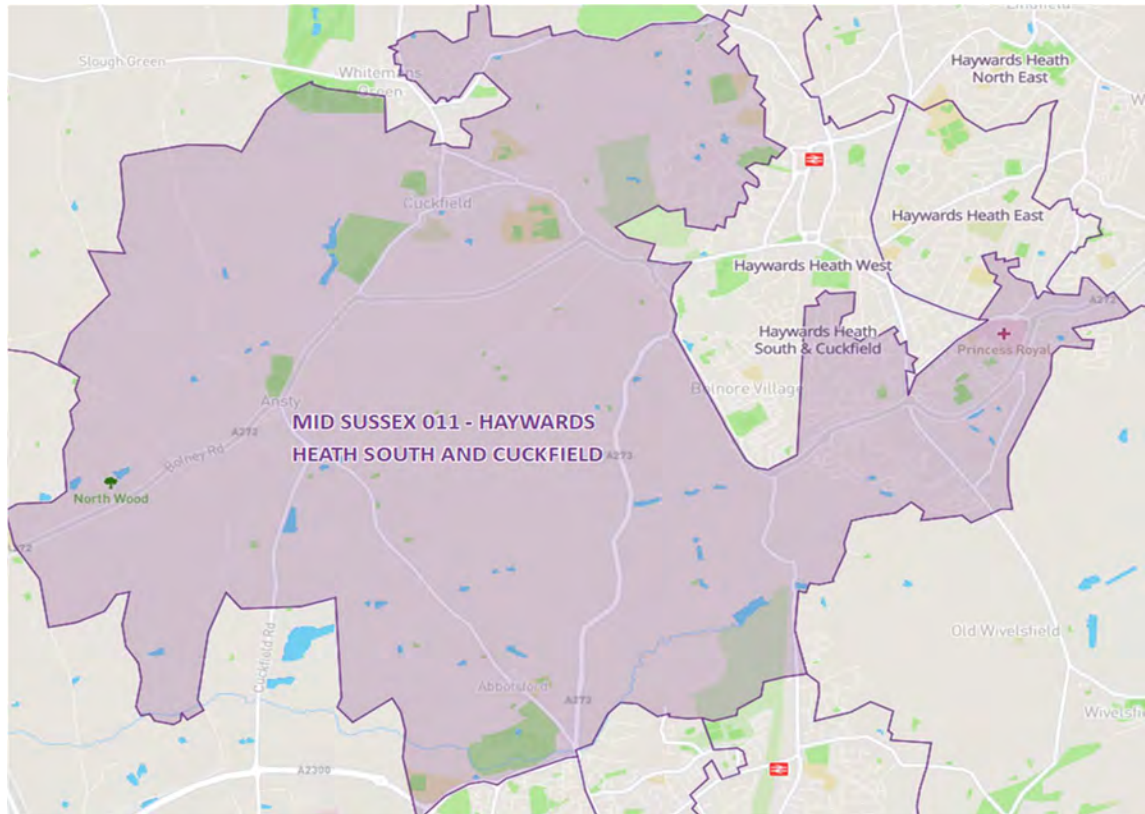
### 7.2 Targets

- 7.2.1 To remain consistent with the preferred outcomes identified in ESCC's LTP4, a target mode shift of 20% from single occupancy vehicles has been applied for the Proposed Development, which falls between their Core and Plus scenarios, which are 19% and 21% respectively. The specific mode shift targets for the various sustainable modes of travel in relation to the Proposed Development and the process used in determining them are discussed in the following sections.

### 7.3 Base Mode Share

- 7.3.1 The base mode share has been derived using Journey to Work data from the 2011 Census. Data for the Mid Sussex 011 Middle Super Output Area (MSOA) has been used as it incorporates part of the Site, but also as it is representative of the residential areas on the outskirts of Haywards Heath rather than the town centre.
- 7.3.2 The Mid Sussex 011 covers the areas of Haywards Heath South and Cuckfield. A plan showing the location of the MSA is provided in **Plate 7.1**.

Plate 7.1 – MSOA Location – Lewes 004



7.3.3 The base mode share for residents within the selected MSOA (including home working) is summarised in **Table 7.1**. Trips made by Train and Taxi have been applied to Single Occupancy Vehicles. The mode share has been used in conjunction with the AM and PM peak vehicular trip generation referenced within the Transport Assessment to estimate the base modal share for all modes at the Proposed Development, with reference to the mode shares.

Table 7.1 - Journey to Work Mode Share – Mid Sussex 011 - 2011 Census

	Car Driver	S.O.V*	Car Pass.	Cycle	Foot	Bus	Home Working	Motor-cycle	Total
Base Mode (%)	80.4%	76.5%	3.9%	1.2%	12.3%	1.6%	0.0%	0.6%	100.0%
Proposed Person Trips (AM)	52	39	4	3	11	4	5	0	78
Proposed Person Trips (PM)	53	39	4	3	11	4	5	0	80

\*S.O.V – Single Occupancy Vehicle

## 7.4 Assessment of Mode Shift

- 7.4.1 The access and movement strategy outlined in Section 4 has been designed to reduce the number of single occupancy car trips to and from the Proposed Development by promoting more sustainable modes of travel.
- 7.4.2 The progress towards achieving mode shift will be reviewed as part of the travel demand management strategy. Supplementary mode shift targets have also been set for walking, cycling, public transport, car sharing and home working.
- 7.4.3 The proposed target mode share is outlined in **Table 7.2**.

Table 7.2 – Proposed Target Mode Share– 20% Mode Shift Target

	Car Driver	S.O.V*	Car Pass.	Cycle	Foot	Bus	Home Working	Motor-cycle	Total
Base Mode Share	80.4%	76.5%	3.9%	1.2%	12.3%	1.6%	0.0%	0.6%	100.0%
% Mode Shift	-	-20%	-	-	-	-	-	-	-
Change in Mode Share	14.3%	-15.3%	1.0%	2.2%	2.1%	3.0%	6.0%	0.0%	-
Proposed Target Mode Share	66.1%	61.2%	4.9%	3.4%	14.4%	4.6%	6.0%	0.6%	100.0%

- 7.4.4 The targets shown in **Table 7.2** reflect where the main travel demand management measures are to be applied (mainly bus use, car sharing, and cycling). These targets are not absolute targets as the base mode share for the site will be determined from the first on-site travel survey, to be undertaken within 6 months of first occupation. This will be supported by data collected from automatic traffic counts on the development access roads. These mode share targets will be reviewed on a regular basis as part of the monitoring of the Residential Travel Plan.
- 7.4.5 In order to achieve the target 20% mode shift from single occupancy car trips, it is proposed that a staged approach towards the overall target is implemented. It is estimated that construction on-site would start in 2026, subject to achieving outline planning permission. It is anticipated that the development will be constructed within 2 years. Given the timescales, the proposed staged mode shift targets from single occupancy car trips are as follows - with a target timeframe for the 20% reduction in single occupancy vehicle trips within 5 years of first occupation:
- Commencement of development e.g. 2026
  - Target of 5% mode shift after 1 year - 80 units completed e.g. 2027
  - Target of 10% mode shift after 3 years - 130 units completed e.g. 2028
  - Target of 20% mode shift after 5 years e.g. 2033

- 7.4.6 The targets have been derived to allow sufficient time to review the Residential Travel Plan and the success of its measures. This will ensure that as the Residential Travel Plan is reviewed, the focus of the document remains on implementing the most successful measures to give the best opportunity to achieve the mode shift targets set out above.
- 7.4.7 These initial staged targets are to be reviewed accordingly as the site and the Residential Travel Plan develop, and with reference to the monitoring results. These interim targets are not fixed, but are intended to give an indication of progress towards the overall 20% mode shift target. The key aim of the Residential Travel Plan remains to achieve a 20% shift away from single occupancy car journeys. Therefore, the walking, cycling, public transport and car sharing estimated mode shift targets detailed above are only predictions. A contingency sum will be set aside for the implementation of further measures and the extension of the Travel Plan Coordinator role in the event that the mode shift target is not met within the timescales set out above.
- 7.4.8 In order to provide a worst-case assessment of traffic impact, mode shift has not been taken into account in the review of the traffic impact of the Proposed Development in the Transport Assessment, nor in the junction capacity assessments.

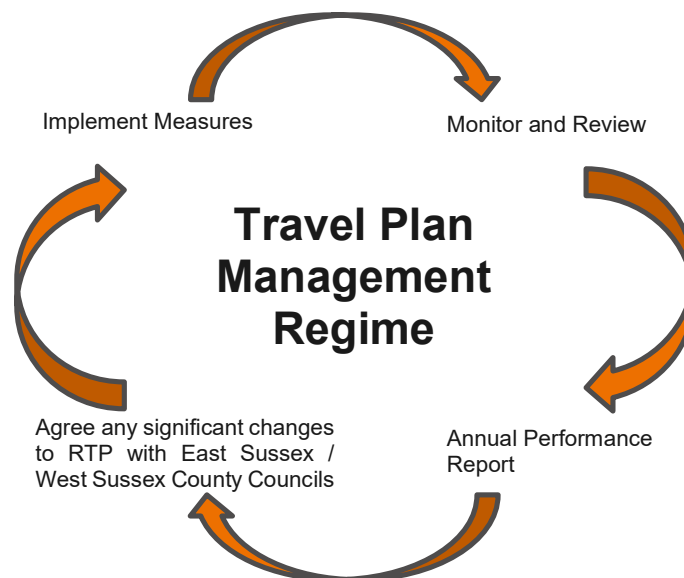
## 7.5 Monitoring and Review

- 7.5.1 This document will be revised annually to ensure that the overall objectives and targets remain reasonable and that measures are deliverable and appropriate.

### Monitoring

- 7.5.2 Monitoring of the RTP is essential in gauging the success of the measures adopted at meeting the 20% mode shift target. This section details the process that will be used by the developer (through the appointed Travel Plan Coordinator) to regularly monitor and review the Travel Plan.

Plate 7.2 – Land East of Lunce's Hill Travel Plan Management Regime



- 7.5.3 The implementation of a Travel Plan involves a continuous process for improving, monitoring, reviewing and adjusting the measures in the plan to reflect changing circumstances. This RTP will therefore be a 'living' document that would be updated on a regular basis.

- 7.5.4 The responsibility for monitoring will rest with the developer and residents through the appointed RTPC. There will be an annual review of travel patterns to assess progress towards achieving the target mode shift.
- 7.5.5 In accordance with local guidance, the monitoring surveys biennially will be carried using the SAM (Standard Assessment Methodology) system undertaken by TRICS. The information obtained will assist to identify modal split, travel choice and behaviour and achieved level of modal shift. A payment of £6,000 will be secured as part of the Section 106 Agreement for the auditing and monitoring of the RTP.
- 7.5.6 The RTP will be monitored for a period of 5 years after the completion of a baseline survey which is to be undertaken upon 50 occupations or 6 months after first occupation (whichever is sooner). The follow up surveys will be conducted at 1, 3 and 5 years and at the end of this period the overall success of the Travel Plan will be assessed against the staged targets referred to above.
- 7.5.7 The RTPC will organise travel surveys to be undertaken to establish the modal split and obtain feedback on the uptake of incentives. It is proposed that the first travel survey be undertaken within six months of first occupation of the development.

## Review

- 7.5.8 The RTPC will collate, analyse, and summarise the raw data, and prepare an Annual Monitoring Report to be submitted to ESCC and WSCC. The findings of the monitoring surveys will be used to identify progress towards the target mode shifts. The RTPC will liaise with the authorities to review and amend the RTP targets and measures accordingly.

## 7.6 Contingency Measures

- 7.6.1 Should the monitoring and review process reveal that targets set out in this RTP have not been met within the stated timescales, then it will be appropriate to consider / implement the remedial measures set out in this section.
- 7.6.2 These contingency measures will be agreed between the developer and the local authority, and will act as the mechanism for addressing the areas where the RTP is potentially failing to achieve the required mode shift.
- 7.6.3 The following contingency measures will be considered depending on where the shortfall is occurring:
- the extension of the RTP monitoring period and the RTPC role if necessary;
  - the provision of additional cycle vouchers and bus voucher contributions;
  - further promotional RTP materials / events; and
  - further incentives to promote car sharing.
- 7.6.4 Should remedial action be required, the RTPC and the authorities will agree a strategy for implementing appropriate measures, using resources set aside in the Contingency Fund.
- 7.7 In addition to the contingency measures detailed above and provided, the Site has considered additional measures to be implemented if the 20% mode shift target is not reached.
- 7.8 These measures would only be introduced in the event that the 20% mode shift target had not been achieved at the end of the 5 year monitoring period, in order to give the RTP time to be fully effective.

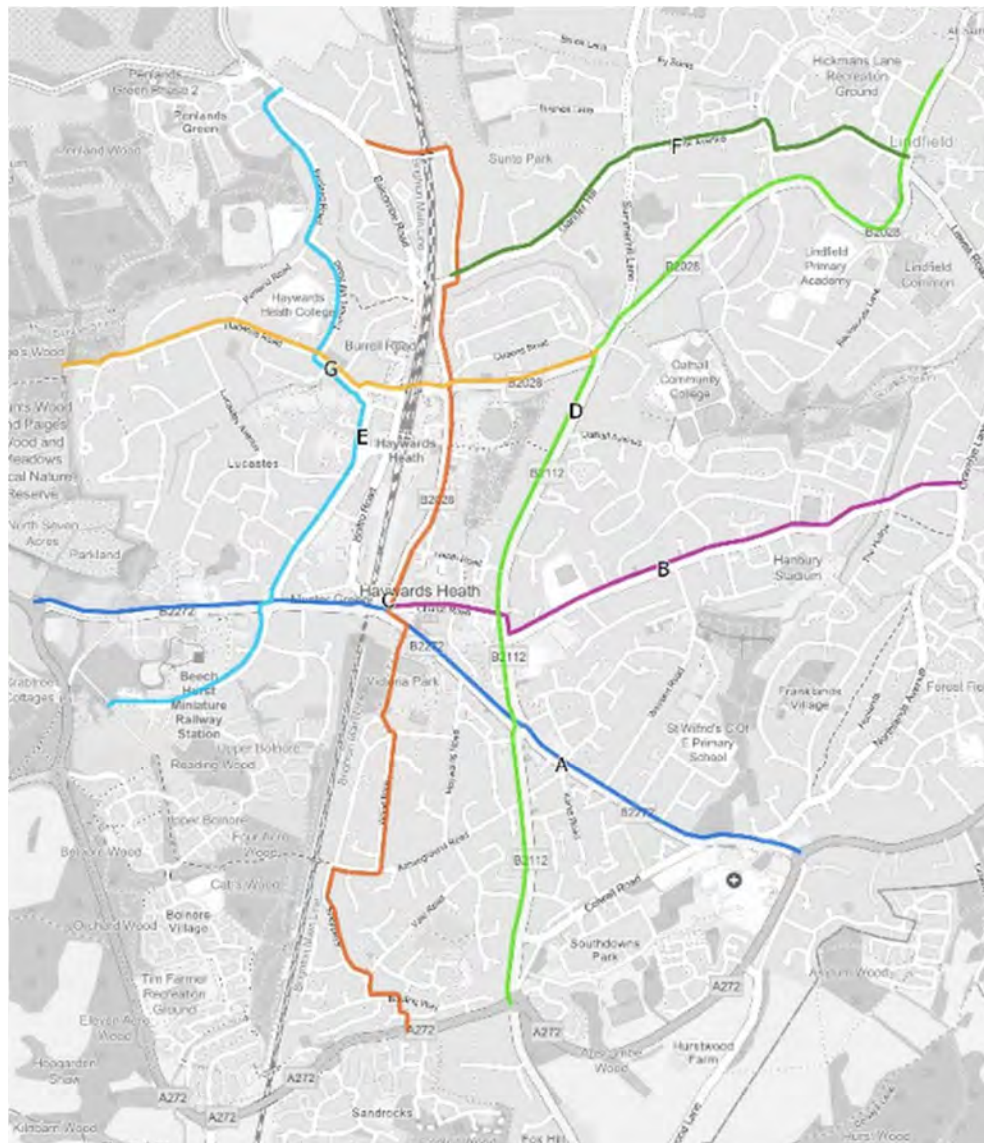
7.9 These measures would be covered by the Contingency Fund mentioned above, and would focus on cycle and public transport connectivity to Haywards Heath. This is deemed appropriate as the Site is already implementing a pedestrian improvement scheme along the B2112 Fox Hill as part of the application, and so it is likely that the greatest additional opportunity to influence mode shift would be via cycling and public transport.

**Additional Contributions to the Local Walking and Cycling Infrastructure Plan**

7.10 The Site would propose to make contributions to the Mid Sussex Local Walking and Cycling Infrastructure Plan (LCWIP), which identifies several routes to improve pedestrian and cycle connectivity in the area.

7.11 Preferred Route 'D' would improve the route from the Site into Haywards Heath town centre, where residents are able to access many key local facilities, and is shown below on **Plate 4.1**.

Plate 4.1 – Mid Sussex Local Walking and Cycling Infrastructure Plan (LCWIP) – Preferred Routes



- 7.12 Contributing to the improvement of this route would benefit residents of the Site by making their primary route into Haywards Heath more appealing, and therefore encouraging more to cycle to the town centre.

**Additional Contributions towards Off-Site Cycle Storage**

- 7.13 There is currently limited cycle storage provided in Haywards Heath town centre, and in most locations where there is cycle parking, this is limited to only a few Sheffield stands.
- 7.14 To encourage cycling into the town centre, the Site would provide contributions towards an additional dedicated cycle storage facility which would be sheltered, which is a much more attractive storage option for cyclists wishing to travel into the town centre and leave their bikes.

**Additional Month of Public Transport Taster Tickets**

- 7.15 Whilst already proposed following occupation of the Site, an additional month of public transport taster tickets would be provided to residents should the mode shift target not be met, to encourage residents to make their journeys via bus.
- 7.16 Due to the 5-year period given to the RTP to achieve the 20% mode shift, it is possible that upgrades in public transport over this time would enable more residents to travel via bus than following the initial taster ticket offer.

## 8 Implementation Process and Responsibilities

### 8.1 Introduction

8.1.1 This section outlines an indicative implementation programme through which the measures contained in the RTP will be implemented and managed. It also details the responsibilities and timing for the specific measures.

### 8.2 Indicative Implementation Programme

8.2.1 At this early stage of the development proposals, a simplified programme for the implementation of the RTP is summarised in **Table 8.1**.

Table 8.1 - Summary of the Programme of Implementation for the Residential Travel Plan

Development Phase	Action	Responsibility
Pre-construction Phase	Submit RTP to authorities for approval	The Developer
	Appoint the RTPC	The Developer
Construction Phase / Early Occupation	Undertake a detailed review and update of the RTP	Residential Travel Plan Coordinator
	Disseminate Travel Information Packs and initiate promotion of the RTP measures	The Developer / Residential Travel Plan Coordinator
	Coordinate the first (and annual) monitoring and review of travel mode share	Residential Travel Plan Coordinator
Full Occupation of the Development	Continue promoting the RTP measures	Residential Travel Plan Coordinator
	Continue to monitor and review progress towards mode shift targets	Residential Travel Plan Coordinator

RTP - Residential Travel Plan

8.2.2 This programme and timescale may change subject to negotiations and agreements between the developer and the authorities on the travel demand strategy put forward and relevant Section 106 Agreement Contents.

### 8.3 Responsibility for Specific Measures

8.3.1 The measures to be implemented as part of the RTP, responsibility and timing of implementation are summarised in **Table 8.2**.

Table 8.2 - Summary of Responsibilities and Timings for Specific Measures

Measures	Responsibility	Timing
<b>Built Environment Measures</b>		
Site Design and Layout Measures	The Developer	Following Planning Permission
Provision of off-site infrastructure improvement measures	The Developer / Authorities	Construction Phase with contribution secured via S106
Provision of facilities that reduce the need to travel (e.g. broadband connections and remote server access at home to encourage homeworking)	The Developer	Construction Phase
<b>Coordinator</b>		
Appointment of Travel Plan Coordinator	The Developer	Prior to occupation
<b>Services and Facilities</b>		
Provision and management of community notice boards	The Developer	Prior to occupation
<b>Marketing, Promotion and Awareness Raising</b>		
Preparation of Travel Information Packs	The Developer / Residential Travel Plan Coordinator	Prior to occupation
Training / briefing of sales team on RTP and personal journey planning	The Developer / Residential Travel Plan Coordinator	Prior to occupation
Travel Plan awareness events / initiatives and annual prize draws	Residential Travel Plan Coordinator	During occupation
Distribution of Travel Information Packs and Travel Plan incentives	Residential Travel Plan Coordinator	During occupation
Distribution of Travel Plan leaflets to surrounding communities	Residential Travel Plan Coordinator	Within 3 months of first occupation and annually thereafter.
<b>Delivery of the Travel Plan Strategy</b>		
Agreement to resources, arrangements for implementation, coordination and day-to-day management of the RTP measures	The Developer / Residential Travel Plan Coordinator	Prior to occupation

Measures	Responsibility	Timing
Meeting of targets and objectives	Residential Travel Plan Coordinator / Authorities	Agreed prior to occupation
Monitoring, reporting and review arrangements	Residential Travel Plan Coordinator / Authorities	Annually from first occupation throughout the agreed monitoring Period (5 yrs)
Provision for Contingency Measures in event of non-delivery	The Developer / Residential Travel Plan Coordinator / Authorities	Agreed prior to occupation

## 8.4 Funding

8.4.1 The developer will fund the following items:




- The transport infrastructure outlined in Section 4 of the RTP;
- The Travel Plan Coordinator role and handover sum to the Residents Steering Committee;
- The implementation of the measures outlined in Section 5 of the RTP;
- The monitoring, review and reporting of the progress of the RTP against the targets set in Section 7; and
- The cost of any contingency measures exerted as a result of the RTP not meeting its targets.

## Appendix A Illustrative Masterplan



LEGEND

-  Site Boundary
-  Site Access
-  Main Street
-  Side Street
-  Shared Surface / Private Drives
-  Existing Public Right of Way
-  Proposed Public Right of Way Diversion Route
-  Dwelling
-  Existing Retained Tree
-  Proposed Tree Planting
-  Sustainable Drainage Feature
-  Existing Hedgerow / Shrub

-  Mown / Informal Footpaths
-  Potential Children's Play / Trim Trail Feature
-  Meadow / Open Space

F	06/06/2025	Southern SUDS pond amended	AKP
E	22/05/2025	Layout adjusted in south western field	AKP
D	23/10/2024	Illustrative landscape detail added	AKP
Rev:	Date:	Description:	Initial:

Project:  
**Land West of Broyle Lane**  
**Broyleside, Ringmer**

Drawing:  
**08f - Illustrative Masterplan**

Scale: 1:2000@A2	Drawn: AKP
Date: 19/07/2024	Checked: --

Reproduced from the Ordnance Survey Map with the permission of the Controller of H.M. Stationery Office Crown copyright license number 100022432 Catesby Estates. Published for the purposes of identification only and although believed to be correct accuracy is not guaranteed. Catesby Estates does not act as Principal Designer and this drawing is not intended to inform Construction Design Management procedures.

Copyright Catesby Estates. No dimensions are to be scaled from this drawing. All dimensions to be checked on site. Area measurements for indicative purposes only.



**Catesby Estates**  
 part of Urban&Civic

## Appendix B WSCC Cycle Journey Planner

# CYCLE LEWES and the district

Cycling in Lewes has boomed in recent years, with the creation of many new paths and increasing use of bikes as the go-to means of transport for local people.

Parents often use Dutch-style cargo bikes on the school run, and the explosion in e-bikes is making cycling in Lewes accessible to all. Lewes, the largest town in the South Downs National Park, is surrounded by rolling hills and winding river valleys. Cycling is the perfect way to discover this stunning landscape.

This map has been created by local cyclists. On the town side of the map, we pick out some useful back routes, and the district side details rides of easy to moderate difficulty, mostly along quiet roads and dedicated cycle paths. Local landmarks, resources for cyclists, tips and advice are also included. **Enjoy the ride!**



FIFTH EDITION

# CYCLE LEWES and the surrounding area



Researched and written by Tim Locke with advice from Cycle Lewes.

Designed and illustrated by Andy Gammon Art and Design Lewes.

Printed by Tansleys Printers, Seaford, East Sussex, 2024

Cycle Lewes acknowledges the support of Lewes District Council, Visit Lewes, Lewes Town Council and Ouse Valley Climate Action in the production of this map, which has been funded by Ouse Valley Climate Action on behalf of the Community Lottery Fund.

Please note however that none of the authors or supporters of this leaflet can be held responsible for any loss or consequence resulting from relying on the contents of this leaflet.

Please be aware that, despite all efforts to verify and check all the content, you use the information contained on this map at your own risk.

## Introduction

Cycling in Lewes isn't as hard as it might look at first. Yes, there are hills and busy roads, but there are also ways to avoid most of them. This side of the map shows some of the routes used by local cyclists – for shopping, going to school, commuting as well as for leisure.

Sometimes you may want to push your bike up a steep section or along a stretch of footpath, but cycling around town will often be quicker than a similar journey by car. Cycling is cheaper than joining a gym – and you don't have to pay for petrol or parking.

At the edge of this map, links to routes featured on the other side are arrowed off. For more resources about cycling, together with news and campaigns, see [cyclelewes.org.uk](http://cyclelewes.org.uk)

We recommend that you use this map in conjunction with Ordnance Survey maps – either the Landranger or Explorer range.

## LOCAL CYCLING INFORMATION

■ East Sussex Cyclists' Touring Club – local group for Cycling UK; organised rides. [eastsussexctc.org.uk](http://eastsussexctc.org.uk)

■ Travel Log Lewes – for news of cycling, walking and public transport in the area. [travelloglewes.co.uk](http://travelloglewes.co.uk)

■ Cycle Seahaven – rides, events, campaigning and training in Seaford, Newhaven and Peacehaven areas. [cycleseahaven.org.uk](http://cycleseahaven.org.uk)

■ Get Bikery – community eCargo bike project hiring bikes and trailers for local households and businesses. [getbikery.org](http://getbikery.org)

■ On Yer Bike Mike offers cycle training for all ages, 07740 94789. [onyerbikemike.co.uk](http://onyerbikemike.co.uk)

■ Contact East Sussex County Council about problems with public rights of way, cycle paths or roads. [eastsussexhighways.com](http://eastsussexhighways.com)

## CYCLE SHOPS/SERVICES

■ Dr Bike, Harvey's Yard (by the brewery), Lewes: free cycle maintenance (charge made for parts) most Sat

mornings 9.30am–12.30pm. [drbikelewes.com](http://drbikelewes.com)

■ Lewes Cycleshack 53 Cliffe High Street, Lewes – cycle repairs, new bikes and equipment for sale. 01273 479688.

[lewescycleshack.co.uk](http://lewescycleshack.co.uk)

■ Mr Cycles 26 Clinton Place, Seaford 01323 893130. [mrcycles.co.uk](http://mrcycles.co.uk)

■ Bikerepairbox – workshop for bike repairs and servicing, Lewes area. 07947 054005. [bikerepairbox.com](http://bikerepairbox.com)

■ Cuckmere Cycle Company, Exceat. Bike hire, accessible bikes, repairs, sales, guided rides. 07943 954458. [cuckmerecycle.co](http://cuckmerecycle.co)

## CYCLING OUT OF TOWN

Lewes is surrounded by a wonderful network of country lanes and off-road routes, leading to dozens of places of interest, to visit, eat and drink.

■ Take extra care for the first couple of miles out of Lewes where you may have to ride on main roads. Avoid the worst of the traffic by setting off early at weekends, or after the morning rush midweek.

■ You can avoid cycling out of Lewes by taking the train to a country station such as Southease, Berwick, Glynde, Cocksbridge or Plumpton.

■ Carry one or two inner tubes in the right size for your tyres and learn how to change them – it's much easier than repairing a puncture out on the road. You'll also need a couple of spanners and tyre levers and a bicycle pump.

Lewes is in the middle of some of the best off-road cycling country in England, with a superb network of bridleways on and around the South Downs. Some are better than others for cycling.

This map highlights some off-road routes where the surface is generally passable for cyclists, divided into easier paths which can be cycled all year round and more challenging ones which may be muddy or bumpy.



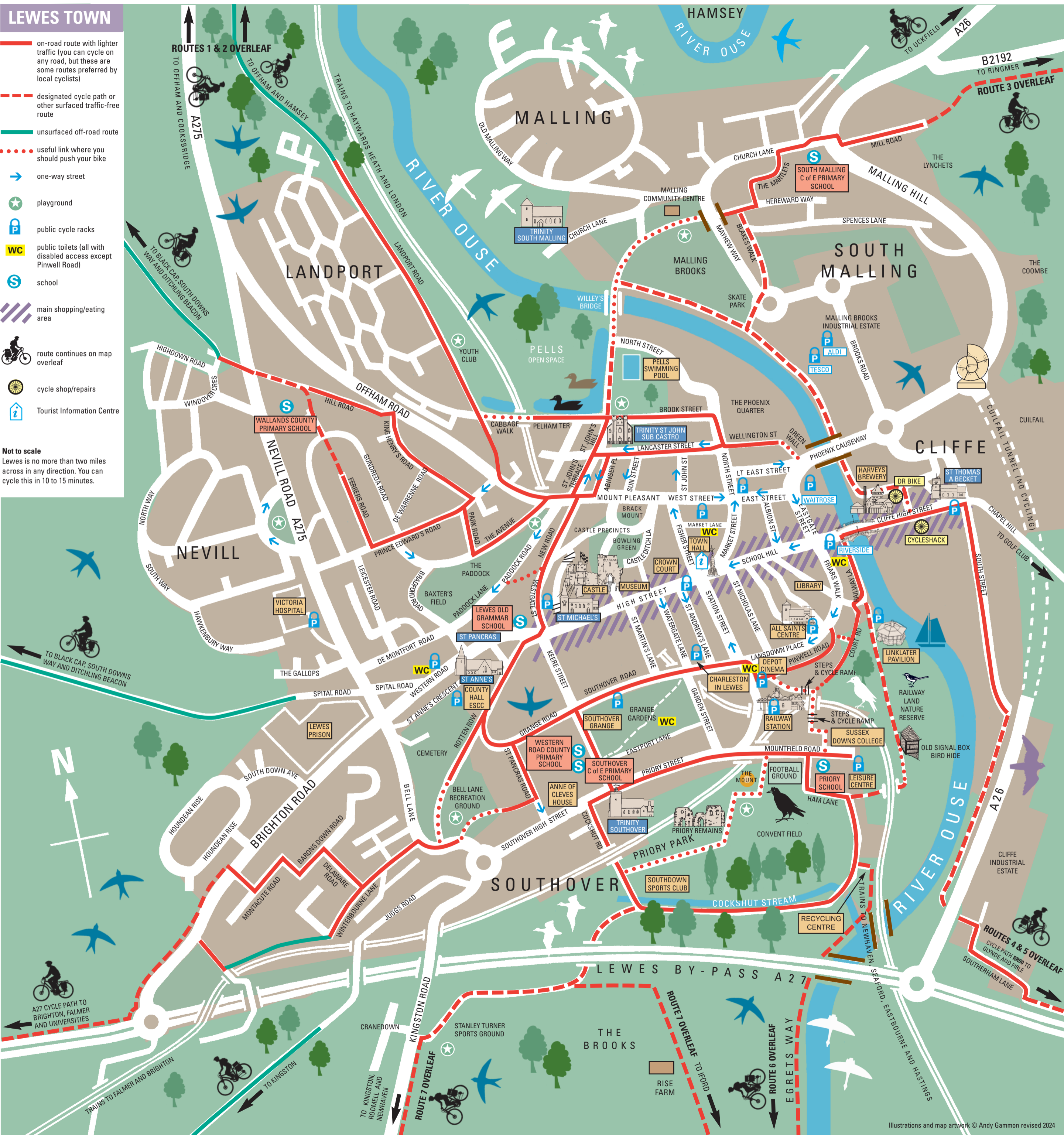
On the South Downs Way, above Kingston and the Ouse Valley (photo: Martin Carr)



## LEWES TOWN

- on-road route with lighter traffic (you can cycle on any road, but these are some routes preferred by local cyclists)
- designated cycle path or other surfaced traffic-free route
- unsurfaced off-road route
- useful link where you should push your bike
- one-way street
- playground
- public cycle racks
- public toilets (all with disabled access except Pinwell Road)
- school
- main shopping/eating area
- route continues on map overleaf
- cycle shop/repairs
- Tourist Information Centre

**Not to scale**  
Lewes is no more than two miles across in any direction. You can cycle this in 10 to 15 minutes.



## Appendix C Bus Timetables and Route Map



# 28,29,29A



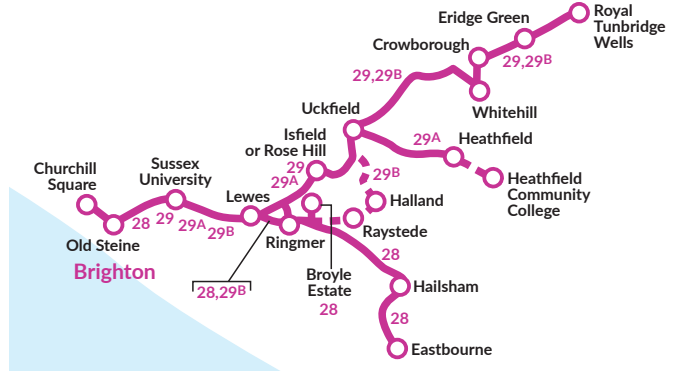
Mondays to Fridays effective 8th January, 2024

route number	29	29	28	29	28	29	29A	28	29	28	29	29A	28	29	28	28	29	29A	28	29	28	28	29	28	28	29	29A	
Churchill Square (stop G)	0535		0600	0615	0630		0644	0657	0711	0722	0732	0742	0752	0802	0812	0822	0833	0844	0857	0907	0917	0927	0937					
Brighton, Old Steine (stop F)	0539		0604	0619	0634		0648	0701	0716	0727	0737	0747	0757	0807	0818	0828	0839	0850	0903	0913	0923	0933	0943					
Lewes Road, Bus Garage	0545	0558	0610	0626	0642	0650	0657	0711	0726	0738	0748	0758	0808	0819	0831	0841	0852	0903	0915	0925	0935	0944	0954					
Brighton University, The Avenue	0547	0600	0612	0628	0644	0652	0659	0713	0728	0741	0751	0801	0811	0822	0834	0844	0855	0906	0918	0928	0938	0947	0957					
Lewes Road, Coldean Lane	0550	0603	0615	0631	0647	0655	0702	0716	0731	0744	0754	0804	0814	0825	0837	0847	0858	0909	0921	0931	0941	0950	1000					
Sussex University A27	0553	0606	0618	0634	0650	0658	0705	0719	0734	0748	0758	0808	0818	0829	0841	0851	0902	0913	0924	0934	0944	0953	1003					
Kingston Ridge	0557	0610	0622	0638	0654	0702	0709	0723	0738	0752	0802	0812	0822	0833	0845	0855	0906	0917	0928	0938	0948	0957	1007					
Lewes Prison	0559	0612	0624	0641	0657	0706	0713	0728	0744	0758	0808	0818	0828	0839	0850	0900	0910	0921	0932	0941	0951	1000	1010					
Lewes, School Hill														0846														0947
Lewes, Waitrose arr	0604	0617	0629	0646	0702	0711	0719	0734	0751	0805	0815	0825	0835		0856	0906	0916	0927	0938			0957	1006	1016				
Lewes, Waitrose dep	0606	0619	0631	0648	0704	0713	0721	0736	0753	0807	0817	0827	0837		0858	0908	0918	0929	0940			0959	1008	1018				
Lewes Tesco		0621	0651				0724		0757			0831			0902			0933				1003						
Church Lane, Police HQ		0623	0653				0726		0759			0833			0904			0935				1005						
Malling Hill, Church Lane	0609	0624	0635	0654	0708	0717	0727	0741	0800	0812	0822	0834	0842		0905	0913	0923	0936	0945			1006	1013	1023				
Ringmer, Olde Post Office Mews		0628	0658				0732		0805			0839			0910			0941				1011						
Ringmer, Broyle Estate		0634	0704				0738		0811			0845			0915			0946				1016						
Laughton, Roebuck		0640	0710				0744		0817			0851			0921			0952				1022						
Horsebridge, King's Head		0650	0720				0756		0829			0902			0932			1002				1032						
Hellingly, Bulrush Lane		0654	0725				0803					0908			0938			1008				1038						
Hailsham, Harebeating Lane		0658	0729				0807		0835			0913			0943			1013				1043						
Hailsham, High Street arr		0702	0733				0812		0841			0917			0947			1017				1047						
Guaranteed connection																												
Hailsham, High Street dep		0704	0737				0814		0846			0919			0949			1019				1049						
Polegate, St. George's Church		0714	0747				0824		0856			0929			0959			1029				1059						
Willingdon Triangle		0717	0751				0828		0900			0932			1002			1032				1102						
District General Hospital		0723	0759				0836		0908			0939			1009			1039				1109						
Eastbourne, Cornfield Road		0731	0809				0846		0917			0948			1018			1048				1118						
Isfield Station							0725					0831						0931										1031
Rose Hill, Halfway House		0615	0641		0715		0749		0820			0850			0920			0952				1020						
Uckfield, Bus Station arr		0624	0650		0725	0736	0800		0831	0844	0901			0930	0943	1002					1030	1043						
Guaranteed connection																												
Uckfield, Bus Station dep	0545	0630	0655	0730	0741	0805	0836	0849	0906			0935	0948	1007							1035	1048						
Blackboys, Gun Road						0753				0901							1000											1100
Heathfield, High Street						0812				0910							1009											1109
Heathfield, Tower Street						0814				0912							1011											1111
Heathfield Community College					0817*																							
Five Ash Down, Pig & Butcher	0551	0636	0702	0737		0813		0844		0914				0943			1015				1043							
Whitehill, Rose Court	0601	0646	0713	0749		0825		0856		0926				0954			1026				1054							
Crowborough, Cross	0606	0653	0721	0757		0833		0904		0933				1001			1033				1101							
Eridge Green, Church	0613	0701	0730	0806		0841		0912		0940				1008			1040				1108							
Tunbridge Wells, Sainsburys	0619	0708	0739	0815		0850		0920		0948				1016			1048				1116							
Tunbridge Wells, Station	0622	0712	0743	0819		0854		0924		0952				1020			1052				1120							
Tunbridge Wells, Monson Road	0623	0713	0744	0820		0855		0925		0953				1021			1053				1121							

Routes 28, 29, 29A and 29B are limited stop between Churchill Square and Sussex University stopping only at Old Steine, St Peters Church, Elm Grove/Lewes Road, Lewes Road Bus Garage, Brighton University, Moulsecoomb Way, Coldean Lane, BACA (28 & 29B only), Sussex University then all stops.

NOTES \* = Schooldays only.

# 28,29,29A

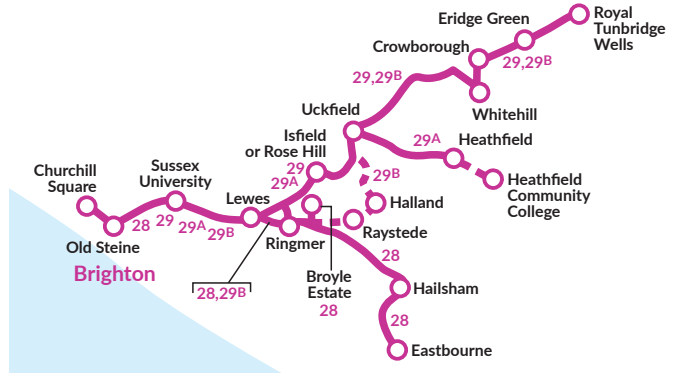


**Mondays to Fridays effective 8th January, 2024**

route number	28	29	28	28	29	29A	28	29	28	28	29	29A	28	29	28	28	29	29A	28	29	28	28	29	29A
Churchill Square (stop G)	0947	0957	1007	1017	1027	1037	1047	1057	1107	1117	1127	1137	1146	1156	1205	1215	1225	1235	1245	1255	1305	1315	1325	1335
Brighton, Old Steine (stop F)	0953	1003	1013	1023	1033	1043	1053	1103	1113	1123	1133	1143	1152	1202	1211	1221	1231	1241	1251	1301	1311	1321	1331	1341
Lewes Road, Bus Garage	1004	1014	1024	1034	1044	1054	1104	1114	1124	1134	1144	1154	1203	1214	1223	1233	1243	1253	1303	1313	1323	1333	1343	1353
Brighton University, The Avenue ⇌	1007	1017	1027	1037	1047	1057	1107	1117	1127	1137	1147	1157	1206	1217	1226	1236	1246	1256	1306	1316	1326	1336	1346	1356
Lewes Road, Coldean Lane	1010	1020	1030	1040	1050	1100	1110	1120	1130	1140	1150	1200	1209	1220	1229	1239	1249	1259	1309	1319	1329	1339	1349	1359
Sussex University A27 ⇌	1013	1023	1033	1043	1053	1103	1113	1123	1133	1143	1153	1203	1212	1223	1232	1242	1252	1302	1312	1322	1332	1342	1352	1402
Kingston Ridge	1017	1027	1037	1047	1057	1107	1117	1127	1137	1147	1157	1207	1216	1227	1236	1246	1256	1306	1316	1326	1336	1346	1356	1406
Lewes Prison	1020	1030	1040	1050	1100	1110	1120	1130	1140	1150	1200	1210	1220	1231	1240	1250	1300	1310	1320	1330	1340	1350	1400	1410
Lewes, School Hill	▼	▼	1046	▼	▼	▼	▼	▼	▼	▼	▼	▼	▼	▼	1246	▼	▼	▼	▼	▼	▼	▼	▼	▼
Lewes, Waitrose arr	1026	1036	▼	1056	1106	1116	1126	1136	▼	1156	1206	1216	1226	1237	▼	1256	1306	1316	1326	1336	▼	1356	1406	1416
Lewes, Waitrose dep	1028	1038	▼	1058	1108	1118	1128	1138	▼	1158	1208	1218	1228	1239	▼	1258	1308	1318	1328	1338	▼	1358	1408	1418
Lewes Tesco	1032	▼	▼	1102	▼	▼	1132	▼	▼	1202	▼	▼	1232	▼	▼	1302	▼	▼	1332	▼	▼	1402	▼	▼
Church Lane, Police HQ	1034	▼	▼	1104	▼	▼	1134	▼	▼	1204	▼	▼	1234	▼	▼	1304	▼	▼	1334	▼	▼	1404	▼	▼
Malling Hill, Church Lane	1035	1043	▼	1105	1113	1123	1135	1143	▼	1205	1213	1223	1235	1244	▼	1305	1313	1323	1335	1343	▼	1405	1413	1423
Ringmer, Olde Post Office Mews	1040	▼	▼	1110	▼	▼	1140	▼	▼	1210	▼	▼	1240	▼	▼	1310	▼	▼	1340	▼	▼	1410	▼	▼
Ringmer, Broyle Estate	1045	▼	▼	1115	▼	▼	1145	▼	▼	1215	▼	▼	1245	▼	▼	1315	▼	▼	1345	▼	▼	1415	▼	▼
Laughton, Roebuck	1051	▼	▼	1121	▼	▼	1151	▼	▼	1221	▼	▼	1251	▼	▼	1321	▼	▼	1351	▼	▼	1421	▼	▼
Horsebridge, King's Head	1101	▼	▼	1131	▼	▼	1201	▼	▼	1231	▼	▼	1301	▼	▼	1331	▼	▼	1401	▼	▼	1431	▼	▼
Hellingly, Bulrush Lane	1107	▼	▼	1137	▼	▼	1207	▼	▼	1237	▼	▼	1307	▼	▼	1337	▼	▼	1407	▼	▼	1437	▼	▼
Hailsham, Harebeating Lane	1112	▼	▼	1142	▼	▼	1211	▼	▼	1241	▼	▼	1311	▼	▼	1341	▼	▼	1411	▼	▼	1441	▼	▼
Hailsham, High Street arr	1116	▼	▼	1146	▼	▼	1215	▼	▼	1245	▼	▼	1315	▼	▼	1345	▼	▼	1415	▼	▼	1445	▼	▼
Guaranteed connection	▼	▼	▼	▼	▼	▼	▼	▼	▼	▼	▼	▼	▼	▼	▼	▼	▼	▼	▼	▼	▼	▼	▼	▼
Hailsham High Street dep	1118	▼	▼	1148	▼	▼	1217	▼	▼	1247	▼	▼	1317	▼	▼	1347	▼	▼	1417	▼	▼	1447	▼	▼
Polegate, St. George's Church	1128	▼	▼	1158	▼	▼	1227	▼	▼	1257	▼	▼	1327	▼	▼	1357	▼	▼	1427	▼	▼	1457	▼	▼
Willingdon Triangle	1131	▼	▼	1201	▼	▼	1230	▼	▼	1300	▼	▼	1330	▼	▼	1400	▼	▼	1430	▼	▼	1502	▼	▼
District General Hospital	1138	▼	▼	1208	▼	▼	1237	▼	▼	1307	▼	▼	1337	▼	▼	1407	▼	▼	1437	▼	▼	1510	▼	▼
Eastbourne, Cornfield Road	1147	▼	▼	1217	▼	▼	1246	▼	▼	1316	▼	▼	1346	▼	▼	1416	▼	▼	1446	▼	▼	1519	▼	▼
Isfield Station	▼	▼	▼	▼	▼	1131	▼	▼	▼	▼	▼	1231	▼	▼	▼	▼	▼	1331	▼	▼	▼	▼	▼	1431
Rose Hill, Halfway House	1050	▼	▼	1120	▼	▼	1150	▼	▼	1220	▼	▼	1251	▼	▼	1320	▼	▼	1350	▼	▼	1420	▼	▼
Uckfield, Bus Station arr	1100	▼	▼	1130	1143	▼	1200	▼	▼	1230	1243	▼	1301	▼	▼	1330	1343	▼	1400	▼	▼	1430	1443	▼
Guaranteed connection	▼	▼	▼	▼	▼	▼	▼	▼	▼	▼	▼	▼	▼	▼	▼	▼	▼	▼	▼	▼	▼	▼	▼	▼
Uckfield, Bus Station dep	1105	▼	▼	1135	1148	▼	1205	▼	▼	1235	1248	▼	1306	▼	▼	1335	1348	▼	1405	▼	▼	1435	1448	▼
Blackboys, Gun Road	▼	▼	▼	▼	1200	▼	▼	▼	▼	▼	▼	1300	▼	▼	▼	▼	▼	1400	▼	▼	▼	▼	1500	▼
Heathfield, High Street	▼	▼	▼	▼	1209	▼	▼	▼	▼	▼	▼	1309	▼	▼	▼	▼	▼	1409	▼	▼	▼	▼	1509	▼
Heathfield, Tower Street	▼	▼	▼	▼	1211	▼	▼	▼	▼	▼	▼	1311	▼	▼	▼	▼	▼	1411	▼	▼	▼	▼	1511	▼
Five Ash Down, Pig & Butcher	1113	▼	▼	1143	▼	▼	1213	▼	▼	1243	▼	▼	1314	▼	▼	1343	▼	▼	1413	▼	▼	1443	▼	▼
Whitehill, Rose Court	1124	▼	▼	1154	▼	▼	1224	▼	▼	1254	▼	▼	1325	▼	▼	1354	▼	▼	1424	▼	▼	1454	▼	▼
Crowborough, Cross	1131	▼	▼	1201	▼	▼	1231	▼	▼	1301	▼	▼	1332	▼	▼	1401	▼	▼	1431	▼	▼	1502	▼	▼
Eridge Green, Church	1138	▼	▼	1208	▼	▼	1238	▼	▼	1308	▼	▼	1339	▼	▼	1408	▼	▼	1438	▼	▼	1511	▼	▼
Tunbridge Wells, Sainsburys	1146	▼	▼	1216	▼	▼	1246	▼	▼	1316	▼	▼	1347	▼	▼	1416	▼	▼	1446	▼	▼	1519	▼	▼
Tunbridge Wells, Station ⇌	1150	▼	▼	1220	▼	▼	1250	▼	▼	1320	▼	▼	1351	▼	▼	1420	▼	▼	1450	▼	▼	1524	▼	▼
Tunbridge Wells, Monson Road	1151	▼	▼	1221	▼	▼	1251	▼	▼	1321	▼	▼	1352	▼	▼	1421	▼	▼	1451	▼	▼	1525	▼	▼

Routes 28, 29 and 29A are limited stop between Churchill Square and Sussex University stopping only at Old Steine, St Peters Church, Elm Grove/Lewes Road, Lewes Road Bus Garage, Brighton University, Moulsecomb Way, Coldean Lane, BACA (28 & 29B only), Sussex University then all stops.

# 28,29,29A,29B



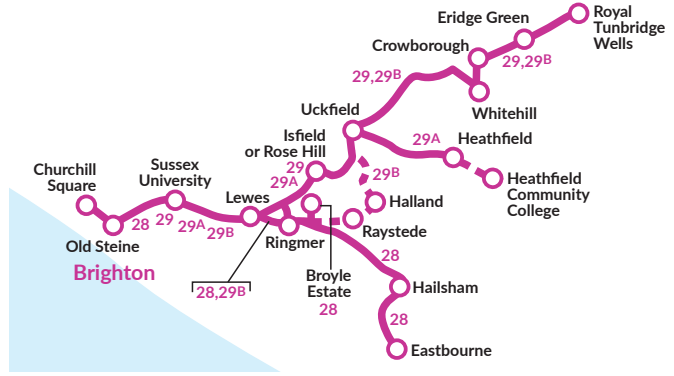
**Mondays to Fridays effective 8th January, 2024**

route number	28	29	28	28	29B	28*	29A	28	29	28	29	29A	28	29	28	28	29	29A	28	29	28	28	29	29A	
Churchill Square (stop G)	1345	1355	1405	1415	1425	1435	1445	1456	1508	1520	1531	1542	1553	1604	1614	1624	1635	1646	1656	1706	1717	1728	1740	1752	
Brighton, Old Steine (stop F)	1351	1401	1411	1421	1431	1441	1451	1502	1514	1526	1537	1548	1559	1610	1620	1630	1641	1652	1702	1712	1723	1734	1746	1758	
Lewes Road, Bus Garage	1403	1413	1423	1433	1443	1453	1503	1515	1527	1540	1552	1603	1614	1625	1635	1645	1656	1706	1716	1726	1737	1748	1800	1812	
Brighton University, The Avenue ⇌	1406	1416	1426	1436	1446	1456	1506	1518	1530	1543	1555	1606	1617	1628	1638	1648	1659	1709	1719	1729	1740	1751	1802	1814	
Lewes Road, Coldean Lane	1409	1419	1429	1439	1449	1459	1509	1521	1534	1547	1559	1610	1621	1632	1642	1652	1703	1713	1723	1733	1744	1755	1805	1817	
Sussex University A27 ⇌	1412	1422	1432	1442	1452	1502	1512	1525	1538	1551	1603	1614	1626	1637	1647	1657	1708	1718	1728	1737	1748	1759	1809	1821	
Kingston Ridge	1416	1426	1436	1446	1456	1506	1516	1529	1542	1555	1607	1619	1631	1642	1652	1702	1713	1723	1732	1741	1752	1803	1813	1825	
Lewes Prison	1420	1430	1440	1450	1500	1511	1521	1534	1548	1601	1614	1626	1638	1649	1659	1709	1720	1730	1739	1748	1758	1808	1818	1829	
Lewes, School Hill			1446					1541						1705							1804				
Lewes, Waitrose arr	1427	1437		1457	1508	1519	1529		1556	1609	1622	1634	1646	1657		1716	1727	1737	1746	1755		1815	1825	1836	
Lewes, Waitrose dep	1429	1439		1459	1511	1521	1531		1558	1611	1624	1636	1648	1659		1718	1729	1739	1748	1757		1817	1827	1838	
Lewes Tesco	1433			1503		1525				1615			1652			1722			1752			1821			
Church Lane, Police HQ	1435			1505		1527				1617			1654			1724			1754			1823			
Malling Hill, Church Lane	1436	1444		1506	1517	1529	1537		1604	1619	1630	1642	1656	1705		1726	1735	1745	1756	1803		1825	1833	1844	
Ringmer, Olde Post Office Mews	1441			1511	1522	1534				1624			1701			1731			1801			1830			
Ringmer King's Academy Grounds arr						1538*																			
Ringmer King's Academy Grounds dep						1540*																			
Ringmer, Broyle Estate	1447			1519		1543				1630			1707			1737			1807			1836			
Halland, Cross Roads					1533																				
Laughton, Roebuck	1453			1525		1550				1638			1715			1745			1814			1843			
Horsebridge, King's Head	1504			1538		1604				1653			1730			1757			1824			1853			
Hellingly, Bulrush Lane				1543		1609				1658			1735			1802			1828			1857			
Hailsham, Harebeating Lane	1511			1547		1613				1702			1739			1806			1831			1900			
Hailsham, High Street arr	1517			1553		1618				1706			1743			1809			1834			1903			
<i>Guaranteed connection</i>																									
Hailsham, High Street dep	1519			1555		1622				1708			1745												
Polegate, St. George's Church	1530			1606		1635				1722			1759												
Willingdon Triangle	1533			1609		1638				1725			1802												
District General Hospital	1542			1618		1646				1732			1809												
Eastbourne, Cornfield Road	1550			1626		1654				1740			1817												
Isfield Station							1545				1650						1753							1852	
Rose Hill, Halfway House		1451						1611		1637			1712			1742			1810					1840	1904
Uckfield, Bus Station arr		1502			1546		1559		1622		1648	1703	1723			1753	1806		1820					1850	1904
<i>Guaranteed connection</i>																									
Uckfield Bus Station dep		1507			1548		1602		1627		1653	1708	1728			1758	1811		1825					1855	1909
Blackboys, Gun Road						1614					1720						1822								1919
Heathfield, High Street						1624					1730						1831								1928
Heathfield, Tower Street						1626					1732						1833								1930
Five Ash Down, Pig & Butcher		1516			1557		1636		1702		1737					1807			1832						1902
Whitehill, Rose Court		1528			1609		1648		1714		1748					1818			1842						1912
Crowborough, Cross		1537			1616		1655		1721		1755					1825			1849						1918
Eridge Green, Church		1546			1624		1703		1729		1803					1832			1856						1925
Tunbridge Wells, Sainsburys		1554			1632		1711		1737		1811					1839			1903						1932
Tunbridge Wells, Station ⇌		1559			1637		1715		1741		1815					1843			1907						1936
Tunbridge Wells, Monson Road		1600			1638		1716		1742		1816					1844			1908						1937

Routes 28, 29, 29A and 29B are limited stop between Churchill Square and Sussex University stopping only at Old Steine, St Peters Church, Elm Grove/Lewes Road, Lewes Road Bus Garage, Brighton University, Moulsecoomb Way, Coldean Lane, BACA (28 & 29B only), Sussex University then all stops.

\* = This journey does not serve Ringmer King's Academy Grounds on non-school days.

# 28,29,29A

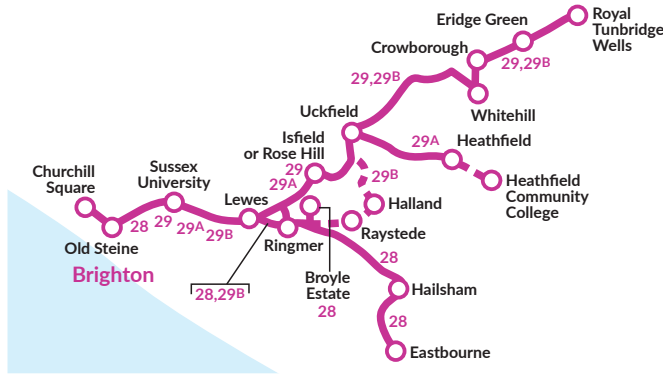


Mondays to Fridays effective 8th January, 2024

route number	28	28	28	29	29A	28	28	29	29A	28	29	28	29	28	29	28	28	28	28
Churchill Square (stop G)	1804	1816	1828	1840	1855	1910	1926	1943	2000	2015	2045	2115	2145	2215	2245	2315	2345	0015	0045
Brighton, Old Steine (stop F)	1810	1822	1834	1846	1901	1916	1932	1949	2005	2020	2050	2120	2150	2220	2250	2320	2350	0020	0050
Lewes Road, Bus Garage	1823	1834	1846	1858	1913	1928	1944	2001	2016	2030	2100	2129	2159	2229	2259	2328	2358	0028	0058
Brighton University, The Avenue ⇄	1825	1836	1848	1900	1915	1930	1946	2003	2018	2032	2102	2131	2201	2231	2301	2330	0000	0030	0100
Lewes Road, Coldean Lane	1828	1839	1851	1903	1918	1933	1949	2006	2021	2035	2105	2134	2204	2234	2304	2333	0003	0033	0103
Sussex University A27 ⇄	1832	1843	1855	1907	1922	1937	1952	2009	2024	2038	2108	2137	2207	2237	2307	2335	0005	0035	0105
Kingston Ridge	1836	1847	1859	1911	1926	1941	1956	2013	2028	2042	2112	2141	2211	2241	2311	2339	0009	0039	0109
Lewes Prison	1840	1851	1903	1915	1930	1944	1959	2016	2031	2045	2115	2144	2214	2244	2314	2342	0012	0042	0112
Lewes, School Hill	▼	1857	▼	▼	▼	▼	2004	▼	▼	▼	▼	▼	▼	▼	▼	▼	▼	▼	▼
Lewes, Waitrose arr	1847	▼	1909	1921	1936	1950	▼	2021	2036	2050	2120	2149	2219	2249	2319	2347	0017	0047	0117
Lewes, Waitrose dep	1849	1911	1923	1938	1952	▼	2023	2038	2052	2122	2151	2220	2250	2320	2348	0018	0048	0118	▼
Lewes Tesco	1853	1914	▼	▼	1954	▼	▼	▼	2054	▼	2153	▼	2252	▼	2350	0020	0050	0120	▼
Church Lane, Police HQ	1855	1916	▼	▼	1956	▼	▼	▼	2056	▼	2155	▼	2254	▼	2352	0022	0052	0122	▼
Malling Hill, Church Lane	1856	1917	1927	1942	1957	▼	2027	2042	2057	2126	2156	2224	2255	2324	2353	0023	0053	0123	▼
Ringmer, Olde Post Office Mews	1901	1922	▼	▼	2002	▼	▼	▼	2101	▼	2200	▼	2259	▼	2357	▼	▼	▼	▼
Ringmer, Broyle Estate	1906	1927	▼	▼	2007	▼	▼	▼	2106	▼	2205	▼	2304	▼	0002	▼	▼	▼	▼
Laughton, Roebuck	1912	1933	▼	▼	2013	▼	▼	▼	2112	▼	2211	▼	2310	▼	0008	▼	▼	▼	▼
Horsebridge, King's Head	1922	1943	▼	▼	2023	▼	▼	▼	2122	▼	2221	▼	2320	▼	0018	▼	▼	▼	▼
Hellingly, Bulrush Lane	1926	1947	▼	▼	2027	▼	▼	▼	2126	▼	2225	▼	2324	▼	0022	▼	▼	▼	▼
Hailsham, Harebeating Lane	1929	1950	▼	▼	2030	▼	▼	▼	2129	▼	2228	▼	2327	▼	0025	▼	▼	▼	▼
Hailsham, High Street	1932	1953	▼	▼	2033	▼	▼	▼	2132	▼	2231	▼	2330	▼	0028	▼	▼	▼	▼
Isfield Station	▼	▼	▼	1949	▼	▼	▼	▼	2049	▼	▼	▼	▼	▼	▼	▼	▼	▼	▼
Rose Hill, Halfway House	▼	1934	▼	▼	▼	▼	▼	2033	▼	▼	2132	▼	2230	▼	2330	▼	▼	▼	▼
Uckfield, Bus Station arr	▼	1944	2001	▼	▼	▼	▼	2043	2101	▼	2142	▼	2239	▼	2339	▼	▼	▼	▼
<i>Guaranteed connection</i>	▼	▼	▼	▼	▼	▼	▼	▼	▼	▼	▼	▼	▼	▼	▼	▼	▼	▼	▼
Uckfield, Bus Station dep	▼	1950	2006	▼	▼	▼	▼	2050	2106	▼	2150	▼	▼	▼	▼	▼	▼	▼	▼
Blackboys, Gun Road	▼	▼	2016	▼	▼	▼	▼	▼	2116	▼	▼	▼	▼	▼	▼	▼	▼	▼	▼
Heathfield, High Street	▼	▼	2024	▼	▼	▼	▼	▼	2124	▼	▼	▼	▼	▼	▼	▼	▼	▼	▼
Heathfield, Tower Street	▼	▼	2026	▼	▼	▼	▼	▼	2126	▼	▼	▼	▼	▼	▼	▼	▼	▼	▼
Five Ash Down, Pig & Butcher	▼	▼	1957	▼	▼	▼	▼	▼	2057	▼	2157	▼	▼	▼	▼	▼	▼	▼	▼
Whitehill, Rose Court	▼	▼	2007	▼	▼	▼	▼	▼	2107	▼	2207	▼	▼	▼	▼	▼	▼	▼	▼
Crowborough, Cross	▼	▼	2013	▼	▼	▼	▼	▼	2112	▼	2212	▼	▼	▼	▼	▼	▼	▼	▼
Eriddle Green, Church	▼	▼	2020	▼	▼	▼	▼	▼	2119	▼	2219	▼	▼	▼	▼	▼	▼	▼	▼
Tunbridge Wells, Sainsburys	▼	▼	2027	▼	▼	▼	▼	▼	2125	▼	2225	▼	▼	▼	▼	▼	▼	▼	▼
Tunbridge Wells, Station ⇄	▼	▼	2031	▼	▼	▼	▼	▼	2128	▼	2228	▼	▼	▼	▼	▼	▼	▼	▼
Tunbridge Wells, Monson Road	▼	▼	2032	▼	▼	▼	▼	▼	2129	▼	2229	▼	▼	▼	▼	▼	▼	▼	▼

Routes 28, 29, 29A are limited stop between Churchill Square and Sussex University stopping only at Old Steine, St Peters Church, Elm Grove/Lewes Road, Lewes Road Bus Garage, Brighton University, Moulsecoomb Way, Coldean Lane, BACA (28 & 29B only), Sussex University then all stops.

# 28,29,29A,29B,29X



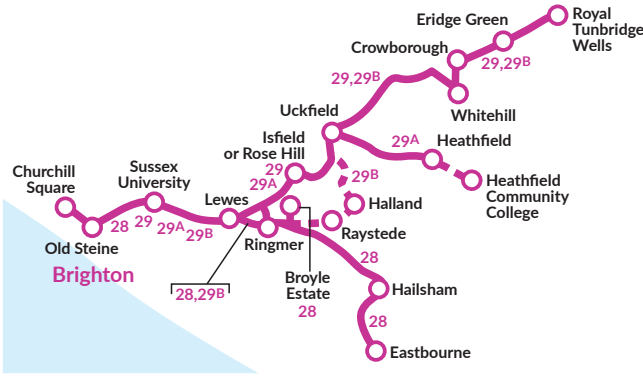
Mondays to Fridays effective 8th January, 2024

route number	28	29	28	28	29	28	29A	28	29X	29	29A	28	29B	28	28	29	29	28	29	29	29A	28	28	29		
day code																SD	SH			SD	SH					
Tunbridge Wells, Royal Victoria Place									0633				0651			0734	0737		0754	0757					0848	
Tunbridge Wells, Station									0636				0654			0737	0740		0757	0800						0851
Tunbridge Wells, Sainsburys									0639				0657			0742	0745		0803	0806						0857
Eridge Green, Church									0645				0703			0749	0752		0810	0813						0903
Crowborough, Cross					0610				0656	0650			0714			0801	0804		0822	0825						0914
Beacon Academy																0804			0825							
Whitehill, Rose Court					0615					0657			0721			0811	0811		0832	0832						0921
Five Ash Down, Pig & Butcher					0624					0708			0732			0823	0823		0844	0844						0931
Heathfield, St. Catherine's Court							0624				0703															0840
Heathfield, High Street							0627				0706															0844
Blackboys, Gun Road							0636				0715															0854
Uckfield, Bus Station arr					0632		0650		0712	0718	0729		0742			0833	0833		0854	0854		0908				0940
Guaranteed connection																										
Uckfield, Bus Station dep		0550			0634		0655		0714	0723	0731		0747			0838	0838		0901	0901		0913				0945
Halland, Cross Roads													0757													
Rose Hill, Halfway House		0558			0643				0723	0734						0849	0849		0912	0912						0955
Isfield Station							0705				0743															0924
Eastbourne, Gildredge Road														0701					0742							0821
District General Hospital														0710					0754							0833
Willingdon Triangle														0715					0800							0839
Polegate, St. George's Church														0722					0807							0843
Hailsham, High Street			0545		0615		0640					0713														
Hailsham, Tesco arr			0547		0617		0642					0716		0734					0819							0853
Guaranteed connection																										
Hailsham, Tesco dep			0547		0617		0642					0716		0736					0823							0855
Hailsham, Harebeating Lane			0549		0620		0645					0719		0739					0826							0857
Hellingly, Bulrush Lane			0553		0624		0650					0725		0747												0903
Horsebridge, King's Head			0556		0627		0653					0729		0752					0832							0907
Laughton, Roebuck			0606		0637		0704					0742		0806					0844							0917
Ringmer, Broyle Estate			0613		0644		0711					0749		0813					0851							0925
Ringmer, Olde Post Office Mews			0619		0651		0719					0757	0810	0822					0859							0933
Malling Hill, Church Lane		0606			0650		0716		0731	0742	0755		0819			0857	0857		0919	0919		0932				1002
Malling, Barn Road	0545		0624		0657		0726					0806		0831					0906							0939
Church Lane, Police HQ	0546		0625		0658		0727					0807		0832					0907							0940
Lewes Tesco	0548		0627		0701		0730					0810		0835					0910							0943
Lewes, School Hill arr	0549	0609	0629		0653	0703	0719	0732	0734	0746	0759	0812	0823	0837		0901	0901	0912	0923	0923	0935	0945				1006
Lewes, School Hill dep	0551	0611	0631	0643	0655	0707	0721	0734	0736	0748	0801	0814	0827	0839	0851	0903	0903	0914	0925	0925	0937	0947	0957			1008
Lewes Prison	0556	0617	0637	0649	0702	0715	0730	0744		0758	0811	0824	0837	0849	0901	0913	0913	0924	0935	0935	0946	0955	1005			1015
Kingston Ridge	0558	0619	0640	0652	0705	0718	0733	0747		0801	0814	0827	0840	0852	0904	0916	0916	0927	0938	0938	0949	0958	1008			1018
Falmer, Station	0603	0624	0644	0657	0710	0724	0739	0753	0748	0807	0820	0832	0845	0856	0908	0920	0920	0931	0942	0942	0953	1003	1013			1023
Lewes Road, Coldean Lane A270	0605	0626	0646	0700	0712	0727	0742	0756	0751	0811	0824	0836	0849	0900	0911	0923	0923	0934	0945	0945	0956	1006	1016			1026
Brighton University, The Avenue	0608	0629	0649	0703	0716	0731	0746	0800	0755	0815	0828	0840	0853	0904	0915	0927	0927	0938	0949	0949	1000	1009	1019			1029
Lewes Road, Bus Garage	0611	0632	0652	0706	0720	0735	0750	0804	0759	0819	0832	0844	0857	0908	0919	0931	0931	0942	0953	0953	1004	1014	1024			1034
Brighton, Old Steine (H)	0619	0640	0701	0716	0731	0746	0801	0815	0810	0830	0843	0855	0907	0918	0929	0941	0941	0952	1003	1003	1014	1024	1034			1044
Brighton, Imperial Arcade (J)	0622	0644	0705	0720	0735	0750	0805	0819	0814	0834	0847	0859	0911	0922	0933	0945	0945	0956	1007	1007	1018	1028	1038			1048

NOTES SD = Schooldays only. SH - School Holidays Only

Routes 28, 29, 29A and 29B are limited stop between Sussex University and Churchill Square stopping only at BACA (28 & 29B only), Coldean Lane, Moulsecomb Way, Brighton University, Lewes Road Bus Garage, Elm Grove, St Peters Church, Valley Gardens, Old Steine and North Street.

# 28,29,29A

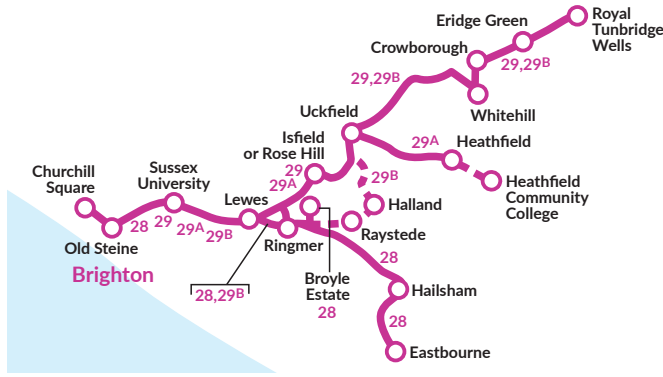


**Mondays to Fridays effective 8th January, 2024**

route number	28	29A	29	28	28	29	28	29A	29	28	28	29	28	29A	29	28	28	29	28	29A	29	28	28	29	
Tunbridge Wells, Royal Victoria Place			0919			0949			1019			1049			1119			1149			1219			1249	
Tunbridge Wells, Station			0922			0952			1022			1052			1122			1152			1222			1252	
Tunbridge Wells, Sainsburys			0928			0958			1028			1058			1128			1158			1228			1258	
Eridge Green, Church			0934			1004			1034			1104			1134			1204			1234			1304	
Crowborough, Cross			0944			1014			1044			1114			1144			1214			1244			1314	
Whitehill, Rose Court			0951			1021			1051			1121			1151			1221			1251			1321	
Five Ash Down, Pig & Butcher			1001			1031			1101			1131			1201			1231			1301			1331	
Heathfield, St. Catherine's Court		0930						1030						1130						1230					
Heathfield, High Street		0934						1034						1134						1234					
Blackboys, Gun Road		0944						1044						1144						1244					
Uckfield, Bus Station arr		0958	1010			1040			1058	1110				1140			1158	1210			1240			1340	
<i>Guaranteed connection</i>																									
Uckfield, Bus Station dep		1003	1015			1045			1103	1115				1145			1203	1215			1245			1345	
Rose Hill, Halfway House			1025			1055			1125					1155			1225			1255			1325	1355	
Isfield Station			1014						1114								1214						1314		
Eastbourne, Gildredge Road	0859					1000								1100						1200				1230	
District General Hospital	0909					1009								1109						1209				1239	
Willingdon Triangle	0914					1015								1115						1215				1245	
Polegate, St. George's Church	0918					1018								1118						1218				1248	
Hailsham, Tesco arr	0928					1028								1128						1228				1258	
<i>Guaranteed connection</i>																									
Hailsham, Tesco dep	0930					1030								1130						1230				1300	
Hailsham, Harebeating Lane	0932					1032								1132						1232				1302	
Hellingly, Bulrush Lane	0936					1036								1136						1236				1306	
Horsebridge, King's Head	0940					1040								1140						1240				1310	
Laughton, Roebuck	0950					1050								1150						1250				1320	
Ringmer, Broyle Estate	0958					1058								1158						1258				1328	
Ringmer, Olde Post Office Mews	1005					1105								1205						1305				1335	
Malling Hill, Church Lane		1022	1032			1102			1122	1132				1202			1222	1232			1302			1402	
Malling, Barn Road	1010					1110								1210						1310				1400	
Church Lane, Police HQ	1011					1111								1211						1311				1401	
Lewes, Tesco	1014					1114								1214						1314				1404	
Lewes, School Hill arr	1016	1026	1036	1046		1106	1116	1126	1136	1146				1206	1216	1226	1236	1246		1306	1316	1326	1336	1346	1406
Lewes, School Hill dep	1018	1028	1038	1048	1058	1108	1118	1128	1138	1148	1158	1208	1218	1228	1238	1248	1258	1308	1318	1328	1338	1348	1358	1408	
Lewes Prison	1025	1035	1045	1055	1105	1115	1125	1135	1145	1155	1205	1215	1225	1235	1245	1255	1305	1315	1325	1335	1345	1355	1405	1415	
Kingston Ridge	1028	1038	1048	1058	1108	1118	1128	1138	1148	1158	1208	1218	1228	1238	1248	1258	1308	1318	1328	1338	1348	1358	1408	1418	
Falmer, Station	1033	1043	1053	1103	1113	1123	1133	1143	1153	1203	1213	1223	1233	1243	1253	1303	1313	1323	1333	1343	1353	1403	1413	1423	
Lewes Road, Coldean Lane A270	1036	1046	1056	1106	1116	1126	1136	1146	1156	1206	1216	1226	1236	1246	1256	1306	1316	1326	1336	1346	1356	1406	1416	1426	
Brighton University, The Avenue	1039	1049	1059	1109	1119	1129	1139	1149	1159	1209	1219	1229	1239	1249	1259	1309	1319	1329	1339	1349	1359	1409	1419	1429	
Lewes Road, Bus Garage	1044	1054	1104	1114	1124	1134	1144	1154	1204	1214	1224	1234	1244	1254	1304	1314	1324	1334	1344	1354	1404	1414	1424	1434	
Brighton, Old Steine (H)	1054	1104	1114	1124	1134	1144	1154	1204	1214	1224	1234	1244	1254	1304	1314	1324	1334	1344	1354	1404	1414	1424	1434	1444	
Brighton, Imperial Arcade (J)	1058	1108	1118	1128	1138	1148	1158	1208	1218	1228	1238	1248	1258	1308	1318	1328	1338	1348	1358	1408	1418	1428	1438	1448	

Routes 28, 29, 29A are limited stop between Sussex University and Churchill Square stopping only at BACA (28 & 29B only), Coldean Lane, Moulsecomb Way, Brighton University, Lewes Road Bus Garage, Elm Grove, St Peters Church, Valley Gardens, Old Steine and North Street.

# 28,29,29A



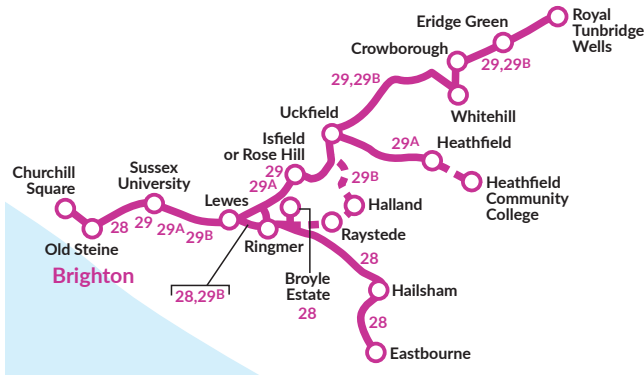
Mondays to Fridays effective 8th January, 2024

route number	28	29A	28	28	29	28	29A	29	28	28	29	28	29A	29	28	29	28	29A	29	28	29	28	29A	29	28	29	28	29A	
Tunbridge Wells, Royal Victoria Place					1319			1349			1418			1445		1516		1546			1622			1653					
Tunbridge Wells, Station					1322			1352			1421			1448		1519		1550			1626			1657					
Tunbridge Wells, Sainsburys					1328			1358			1427			1454		1525		1556			1633			1704					
Eridge Green, Church					1334			1404			1433			1501		1532		1603			1640			1711					
Crowborough, Cross					1344			1414			1443			1512		1544		1615			1652			1723					
Whitehill, Rose Court					1351			1421			1450			1519		1551		1622			1659			1730					
Five Ash Down, Pig & Butcher					1401			1431			1500			1529		1601		1632			1709			1740					
Heathfield Community College																1520*													
Heathfield, St. Catherine's Court		1330									1430					1528					1638								1744
Heathfield, High Street		1334									1434					1533					1642								1748
Blackboys, Gun Road		1344									1444					1544					1652								1758
Uckfield, Bus Station arr		1358	1410					1440			1458	1509				1539	1559	1611		1642			1706	1719			1749	1812	
Guaranteed connection																													
Uckfield, Bus Station dep		1403	1415					1445			1503	1514				1544	1604	1617		1647			1711	1724			1754	1816	
Rose Hill, Halfway House								1425			1455		1524			1555		1628		1658			1735	1804					
Isfield Station		1414									1514					1616					1723								1827
Eastbourne, Gildredge Road	1300			1330				1400			1428			1455		1535		1606			1642			1712					
District General Hospital	1309			1339				1409			1438			1505		1546		1617			1653			1723					
Willingdon Triangle	1315			1345				1415			1444			1511		1552		1623			1659			1729					
Polegate, St. George's Church	1318			1348				1418			1447			1515		1557		1628			1704			1733					
Hailsham, Tesco arr	1328			1358				1428			1457			1528		1608		1639			1715			1743					
Guaranteed connection																													
Hailsham, Tesco dep	1330			1400				1430			1459			1530		1610		1641			1717			1745					
Hailsham, Harebeating Lane	1332			1402				1432			1501			1534		1612		1643			1719			1747					
Hellingly, Bulrush Lane	1336			1406				1436			1507			1540		1617		1648			1724			1752					
Horsebridge, King's Head	1340			1410				1440			1507			1544		1621		1651			1727			1755					
Laughton, Roebuck	1350			1420				1450			1517			1555		1632		1702			1737			1805					
Ringmer, Broyle Estate	1358			1428				1458			1525			1602		1639		1709			1743			1811					
Ringmer, Olde Post Office Mews	1405			1435				1505			1534			1609		1645		1715			1749			1817					
Malling Hill, Church Lane		1422	1432					1502			1522	1531			1603	1625	1636		1706		1732	1742		1811			1835		
Malling, Barn Road	1410			1440				1510			1540			1614		1650		1720			1754			1822					
Church Lane, Police HQ	1411			1441				1511			1541			1615		1651		1721			1755			1823					
Lewes Tesco	1414			1444				1514			1544			1618		1654		1724			1758			1826					
Lewes, School Hill arr	1416	1426	1436	1446		1506	1516	1526	1536	1546	1608	1620	1630	1641	1656	1711	1726	1736	1746	1800	1815	1828	1839						
Lewes, School Hill dep	1418	1428	1438	1448	1458	1508	1518	1528	1538	1548	1558	1610	1622	1632	1643	1658	1713	1728	1738	1748	1802	1817	1830	1841					
Lewes Prison	1425	1435	1445	1455	1505	1515	1525	1535	1545	1556	1606	1618	1630	1640	1651	1706	1721	1736	1746	1756	1809	1824	1837	1848					
Kingston Ridge	1428	1438	1448	1458	1508	1518	1528	1538	1549	1600	1610	1622	1634	1644	1655	1710	1725	1740	1750	1800	1812	1827	1839	1850					
Falmer Station	1433	1443	1454	1504	1514	1524	1535	1546	1557	1608	1618	1630	1641	1651	1703	1718	1733	1747	1757	1807	1819	1833	1845	1856					
Lewes Road, Coldean Lane A270	1436	1446	1457	1507	1517	1527	1538	1549	1600	1611	1621	1633	1644	1654	1705	1720	1735	1749	1759	1809	1821	1835	1847	1858					
Brighton University, The Avenue	1439	1449	1500	1511	1521	1531	1542	1553	1604	1615	1625	1637	1648	1658	1709	1724	1739	1753	1803	1812	1824	1838	1850	1901					
Lewes Road, Bus Garage	1444	1454	1505	1516	1526	1536	1547	1558	1609	1620	1630	1642	1653	1703	1714	1729	1744	1758	1807	1816	1828	1842	1854	1905					
Brighton, Old Steine (H)	1454	1504	1515	1526	1536	1546	1557	1608	1619	1630	1640	1652	1704	1714	1725	1740	1755	1809	1818	1827	1839	1853	1905	1915					
Brighton, Imperial Arcade (J)	1458	1508	1519	1530	1540	1550	1601	1612	1623	1634	1644	1656	1708	1718	1729	1744	1759	1813	1822	1831	1843	1857	1909	1919					

Routes 28, 29 and 29A are limited stop between Sussex University and Churchill Square stopping only at BACA (28 & 29B only), Coldean Lane, Moulsecomb Way, Brighton University, Lewes Road Bus Garage, Elm Grove, St Peters Church, Valley Gardens, Old Steine and North Street.

NOTES \* = Schooldays only.

28,29,29A

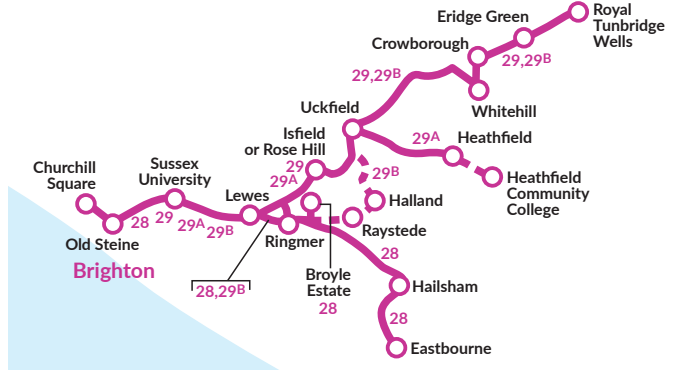


**Mondays to Fridays effective 8th January, 2024**

route number	29	28	29	28	29A	29	28	29A	29	28	29	28	29	28	29
Tunbridge Wells, Royal Victoria Place	1730	1803			1858			1952	2052	2152	2252				
Tunbridge Wells, Station ⇄	1734	1807			1901			1955	2055	2155	2255				
Tunbridge Wells, Sainsburys	1741	1814			1907			1959	2059	2159	2259				
Eridge Green, Church	1748	1820			1913			2005	2105	2205	2305				
Crowborough, Cross	1800	1832			1922			2013	2113	2213	2313				
Whitehill, Rose Court	1807	1837			1927			2018	2118	2218	2318				
Five Ash Down, Pig & Butcher	1817	1847			1937			2028	2128	2228	2328				
Heathfield, St. Catherine's Court	▼	▼			1852	▼		1952	▼	▼	▼	▼	▼	▼	▼
Heathfield, High Street	▼	▼			1855	▼		1954	▼	▼	▼	▼	▼	▼	▼
Blackboys, Gun Road	▼	▼			1905	▼		2004	▼	▼	▼	▼	▼	▼	▼
Uckfield, Bus Station arr	1824	1854	1918	1943	2017	2034	2134	2234	2334						
Guaranteed connection	▼	▼	▼	▼	▼	▼	▼	▼	▼	▼	▼	▼	▼	▼	▼
Uckfield, Bus Station dep	1829	1859	1924	1948	2022	2039	2139	2239	2339						
Rose Hill, Halfway House	1839	1908	▼	▼	1957	▼	▼	2047	2147	2247	2347				
Isfield Station	▼	▼			1934	▼		2031	▼	▼	▼	▼	▼	▼	▼
Eastbourne, Gildredge Road	▼	1752	▼	▼	▼	▼	▼	▼	▼	▼	▼	▼	▼	▼	▼
District General Hospital	▼	1801	▼	▼	▼	▼	▼	▼	▼	▼	▼	▼	▼	▼	▼
Willingdon Triangle	▼	1806	▼	▼	▼	▼	▼	▼	▼	▼	▼	▼	▼	▼	▼
Polegate, St. George's Church	▼	1809	▼	▼	▼	▼	▼	▼	▼	▼	▼	▼	▼	▼	▼
Hailsham, High Street	▼	▼	1849	▼	▼	1945	▼	▼	2045	▼	2145	▼	2245	▼	▼
Hailsham, Tesco arr	▼	1819	▼	1852	▼	1948	▼	▼	2048	▼	2148	▼	2247	▼	▼
Guaranteed connection	▼	▼	▼	▼	▼	▼	▼	▼	▼	▼	▼	▼	▼	▼	▼
Hailsham, Tesco dep	▼	1821	▼	1852	▼	1948	▼	▼	2048	▼	2148	▼	2247	▼	▼
Hailsham, Harebeating Lane	▼	1823	▼	1854	▼	1950	▼	▼	2050	▼	2150	▼	2249	▼	▼
Hellingly Bulrush Lane	▼	1828	▼	1859	▼	1954	▼	▼	2054	▼	2154	▼	2253	▼	▼
Horsebridge, King's Head	▼	1831	▼	1902	▼	1957	▼	▼	2057	▼	2157	▼	2256	▼	▼
Laughton, Roebuck	▼	1841	▼	1912	▼	2007	▼	▼	2107	▼	2207	▼	2307	▼	▼
Ringmer, Broyle Estate	▼	1847	▼	1918	▼	2013	▼	▼	2113	▼	2213	▼	2313	▼	▼
Ringmer, Olde Post Office Mews	▼	1853	▼	1924	▼	2018	▼	▼	2118	▼	2218	▼	2318	▼	▼
Malling Hill, Church Lane	1846	▼	1915	▼	1942	2004	▼	2039	2054	▼	2154	▼	2254	▼	2354
Malling, Barn Road	▼	1857	▼	1928	▼	2022	▼	▼	2122	▼	2222	▼	2322	▼	▼
Church Lane, Police HQ	▼	1858	▼	1929	▼	2023	▼	▼	2123	▼	2223	▼	2323	▼	▼
Lewes Tesco	▼	1901	▼	1931	▼	2025	▼	▼	2125	▼	2225	▼	2325	▼	▼
Lewes, School Hill arr	1850	1903	1918	1933	1945	2006	2026	2041	2056	2126	2156	2226	2256	2326	2356
Lewes, School Hill dep	1852	1905	1920	1935	1948	2008	2028	2043	2058	2128	2158	2228	2258	2328	2358
Lewes Prison	1859	1912	1927	1942	1955	2015	2034	2049	2104	2134	2204	2234	2304	2334	0004
Kingston Ridge	1901	1914	1929	1944	1957	2017	2036	2051	2106	2136	2206	2236	2306	2336	0006
Falmer Station ⇄	1907	1920	1935	1950	2003	2022	2041	2056	2111	2141	2211	2241	2311	2341	0011
Lewes Road, Coldean Lane A270	1909	1922	1937	1952	2005	2024	2043	2058	2113	2143	2213	2243	2313	2343	0013
Brighton University, The Avenue ⇄	1912	1925	1940	1955	2008	2027	2046	2101	2116	2146	2216	2246	2316	2346	0016
Lewes Road, Bus Garage	1916	1929	1944	1959	2012	2031	2050	2105	2120	2150	2220	2250	2320	2350	0020
Brighton, Old Steine (H)	1926	1939	1954	2009	2022	2039	2058	2113	2128	2158	2228	2258	2328	2358	0028
Brighton, Imperial Arcade (J)	1929	1942	1957	2012	2025	2042	2101	2116	2131	2201	2231	2301	2331	0001	0031

Routes 28, 29 and 29A are limited stop between Sussex University and Churchill Square stopping only at BACA (28 & 29B only), Coldean Lane, Moulsecomb Way, Brighton University, Lewes Road Bus Garage, Elm Grove, St Peters Church, Valley Gardens, Old Steine and North Street.

28,29,29<sup>A</sup>

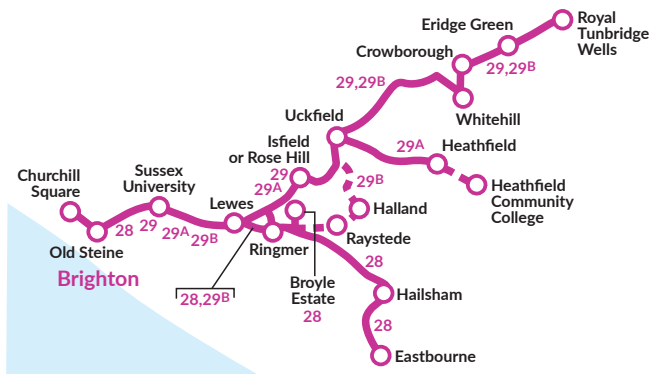


Saturdays effective 13th January, 2024

route number	29	29	28	29	28	29	28	29	28	29	29A	28	29	28	29	29A	28	29	28	28	29	29A	28	29	28	
Churchill Square (stop G)	0550		0620		0648		0713	0727	0740		0753	0807	0821	0833	0843	0853	0903	0913	0921	0930	0940	0950	1000	1009		
Brighton, Old Steine (stop F)	0554		0624		0652		0717	0731	0744		0757	0811	0825	0837	0847	0857	0907	0917	0925	0935	0945	0955	1005	1015		
Lewes Road, Bus Garage	0600	0615	0630	0644	0658	0711	0724	0739	0752	0758	0805	0819	0834	0846	0856	0906	0916	0926	0935	0945	0955	1005	1015	1025		
Brighton University, The Avenue	0602	0617	0632	0646	0700	0713	0726	0741	0754	0800	0807	0821	0836	0848	0858	0908	0918	0928	0937	0947	0957	1007	1017	1027		
Lewes Road, Coldean Lane	0605	0620	0635	0649	0703	0716	0729	0744	0757	0803	0810	0824	0839	0851	0901	0911	0921	0931	0940	0950	1000	1010	1020	1030		
Sussex University A27	0607	0622	0637	0651	0705	0718	0732	0746	0759	0806	0813	0827	0842	0854	0904	0914	0924	0934	0943	0953	1003	1013	1023	1033		
Kingston Ridge	0611	0626	0641	0655	0709	0722	0736	0750	0803	0810	0817	0831	0846	0858	0908	0918	0928	0938	0947	0957	1007	1017	1027	1037		
Lewes, H M Prison	0613	0628	0643	0657	0711	0725	0739	0754	0807	0814	0821	0835	0850	0902	0912	0922	0932	0942	0951	1001	1011	1021	1031	1041		
Lewes, School Hill																		0948							1047	
Lewes, Waitrose arr	0618	0633	0648	0702	0716	0731	0745	0800	0813	0820	0827	0841	0856	0908	0918	0928	0938		0958	1008	1018	1028	1038			
Lewes, Waitrose dep	0620	0635	0650	0704	0718	0733	0747	0802	0815	0822	0829	0843	0859	0910	0920	0930	0940		1001	1010	1020	1030	1040			
Lewes Tesco		0638		0707		0736		0805			0833		0903		0934				1005		1034					
Church Lane, Police HQ		0639		0708		0737		0806			0834		0905		0936				1007		1036					
Malling Hill, Church Lane	0624	0640	0654	0709	0722	0738	0751	0807	0819	0826	0835	0847	0906	0915	0925	0937	0945		1008	1015	1025	1037	1045			
Ringmer, Olde Post Office Mews		0644		0713		0742		0811			0839		0910		0941				1012		1042					
Ringmer, Broyle Estate		0649		0718		0747		0816			0844		0915		0946				1017		1047					
Laughton, Roebuck		0655		0724		0753		0822			0850		0921		0952				1023		1053					
Horsebridge, King's Head		0705		0734		0803		0832			0900		0931		1002				1033		1103					
Hellingly, Bulrush Lane		0709		0738		0807		0836			0905		0936		1007				1038		1108					
Hailsham, Harebeating Lane		0712		0742		0811		0840			0909		0940		1011				1042		1112					
Hailsham, High Street arr.		0716		0746		0815		0844			0913		0944		1015				1046		1116					
<i>Guaranteed connection</i>																										
Hailsham, High Street dep.		0718		0748		0817		0846			0915		0946		1017				1048		1118					
Polegate, St. George's Church		0728		0758		0827		0856			0925		0956		1027				1058		1128					
Willingdon Triangle		0731		0801		0830		0859			0928		0959		1030				1101		1131					
District General Hospital		0736		0806		0835		0904			0934		1005		1037				1108		1138					
Eastbourne, Cornfield Road		0743		0813		0843		0913			0943		1014		1046				1117		1147					
Isfield Station										0834				0933							1033					
Rose Hill, Halfway House		0630		0700		0728		0757		0825		0853		0921		0951			1021		1051					
Uckfield, Bus Station arr		0639		0709		0737		0806		0834	0845		0902		0931	0945		1001		1031	1045		1101			
<i>Guaranteed connection</i>																										
Uckfield, Bus Station dep	0552	0644		0714		0742		0811		0839	0850		0907		0936	0950		1006		1036	1050		1106			
Blackboys, Gun Road										0902				1002							1102					
Heathfield, High Street										0912				1012							1112					
Heathfield, Tower Street										0914				1014							1114					
Five Ash Down, Pig & Butcher	0558	0650		0720		0748		0817		0846		0914		0944		1014			1044		1114					
Whitehill, Rose Court	0608	0700		0730		0758		0827		0856		0925		0955		1025			1055		1125					
Crowborough, Cross	0613	0705		0735		0804		0833		0902		0932		1002		1032			1102		1132					
Eridge Green Church	0620	0712		0742		0811		0841		0910		0940		1010		1040			1110		1140					
Tunbridge Wells, Sainsburys	0626	0718		0748		0818		0849		0918		0948		1018		1048			1118		1148					
Tunbridge Wells, Station	0629	0721		0751		0821		0852		0922		0952		1022		1052			1122		1152					
Tunbridge Wells, Monson Road	0630	0722		0752		0822		0853		0923		0953		1023		1053			1123		1153					

Routes 28, 29 and 29A are limited stop between Churchill Square and Sussex University stopping only at Old Steine, St Peters Church, Elm Grove/Lewes Road, Lewes Road Bus Garage, Brighton University, Moulsecroomb Way, Coldean Lane, BACA (28 & 29B only), Sussex University then all stops.

28,29,29<sup>A</sup>



Saturdays effective 13th January, 2024

route number	28	29	29A	28	29	28	28	29	29A	28	29	28	28	29	29A	28	29	28	28	29	29A	28	29	28	28
Churchill Square (stop G)	1018	1028	1037	1046	1055	1105	1115	1125	1135	1145	1155	1205	1215	1225	1235	1245	1255	1305	1317	1328	1339	1350	1401	1411	1422
Brighton, Old Steine (stop F)	1024	1034	1043	1052	1101	1111	1121	1131	1141	1151	1201	1211	1221	1231	1241	1251	1301	1311	1323	1334	1345	1356	1407	1417	1428
Lewes Road, Bus Garage	1034	1044	1054	1103	1113	1123	1133	1143	1153	1203	1213	1223	1233	1243	1253	1303	1313	1323	1335	1346	1357	1408	1419	1429	1440
Brighton University, The Avenue	1037	1047	1057	1106	1116	1126	1136	1146	1156	1206	1216	1226	1236	1246	1256	1306	1316	1326	1338	1349	1400	1411	1422	1432	1443
Lewes Road, Coldean Lane	1040	1050	1100	1109	1119	1129	1139	1149	1159	1209	1219	1229	1239	1249	1259	1309	1319	1329	1341	1352	1403	1414	1425	1435	1446
Sussex University A27	1043	1053	1103	1112	1122	1132	1142	1152	1202	1212	1222	1232	1242	1252	1302	1312	1322	1332	1344	1355	1406	1417	1428	1438	1449
Kingston Ridge	1047	1057	1107	1116	1126	1136	1146	1156	1206	1216	1226	1236	1246	1256	1306	1316	1326	1336	1348	1359	1410	1421	1432	1442	1453
Lewes, H M Prison	1051	1101	1111	1120	1130	1140	1150	1200	1210	1220	1230	1240	1250	1300	1310	1320	1330	1340	1352	1403	1414	1425	1436	1446	1457
Lewes, School Hill						1147							1247					1347							1452
Lewes, Waitrose arr	1058	1108	1118	1128	1138		1158	1208	1218	1228	1238		1258	1308	1318	1328	1338		1400	1410	1421	1432	1443		1504
Lewes, Waitrose dep	1100	1110	1120	1130	1140		1200	1210	1220	1230	1240		1300	1310	1320	1330	1340		1402	1412	1423	1434	1445		1506
Lewes Tesco	1104			1134			1204			1234			1304			1334			1406			1438			1510
Church Lane, Police HQ	1106			1136			1206			1236			1306			1336			1408			1440			1512
Malling Hill, Church Lane	1107	1115	1125	1137	1145		1207	1215	1225	1237	1245		1307	1315	1325	1337	1345		1409	1417	1428	1441	1450		1513
Ringmer, Olde Post Office Mews	1112			1142			1212			1242			1312			1342			1414			1446			1518
Ringmer, Broyle Estate	1117			1147			1217			1247			1317			1347			1420			1452			1524
Laughton, Roebuck	1123			1153			1223			1253			1323			1353			1426			1458			1530
Horsebridge, King's Head	1133			1203			1233			1303			1333			1403			1436			1508			1540
Hellingly, Bulrush Lane	1138			1208			1238			1308			1338			1408			1441			1513			1544
Hailsham, Harebeating Lane	1142			1212			1242			1312			1342			1412			1445			1517			1548
Hailsham, High Street arr	1146			1216			1246			1316			1346			1416			1449			1521			1552
Guaranteed connection																									
Hailsham, High Street dep	1148			1218			1248			1318			1348			1418			1451			1523			1554
Polegate, St. George's Church	1158			1228			1258			1328			1358			1428			1501			1533			1604
Willingdon Triangle	1201			1231			1301			1331			1402			1432			1504			1536			1606
District General Hospital	1208			1238			1308			1338			1408			1438			1510			1541			1611
Eastbourne, Cornfield Road	1217			1247			1317			1347			1417			1447			1519			1550			1620
Isfield Station			1133						1233						1333							1436			
Rose Hill, Halfway House	1121			1151				1221			1251			1321			1351			1423			1456		
Uckfield, Bus Station arr	1131	1145		1201				1231	1245		1301			1331	1345		1401			1433	1448		1507		
Guaranteed connection																									
Uckfield, Bus Station dep	1136	1150		1206				1236	1250		1306			1336	1350		1406			1438	1453		1512		
Blackboys, Gun Road		1202							1302					1402								1505			
Heathfield, High Street		1212							1312					1412								1515			
Heathfield, Tower Street		1214							1314					1414								1517			
Five Ash Down, Pig & Butcher	1144			1214				1244			1314			1344			1414			1446			1519		
Whitehill, Rose Court	1155			1225				1255			1325			1355			1425			1457			1530		
Crowborough, Cross	1202			1232				1302			1332			1402			1432			1504			1537		
Eridge Green, Church	1210			1240				1310			1340			1410			1440			1512			1544		
Tunbridge Wells, Sainsburys	1218			1248				1318			1348			1418			1448			1519			1551		
Tunbridge Wells, Station	1222			1252				1322			1352			1422			1452			1522			1554		
Tunbridge Wells, Monson Road	1223			1253				1323			1353			1423			1453			1523			1555		

Routes 28, 29 are limited stop between Churchill Square and Sussex University stopping only at Old Steine, St Peters Church, Elm Grove/Lewes Road, Lewes Road Bus Garage, Brighton University, Moulsecoomb Way, Coldean Lane, BACA (28 & 29B only), Sussex University then all stops.

28,29,29<sup>A</sup>

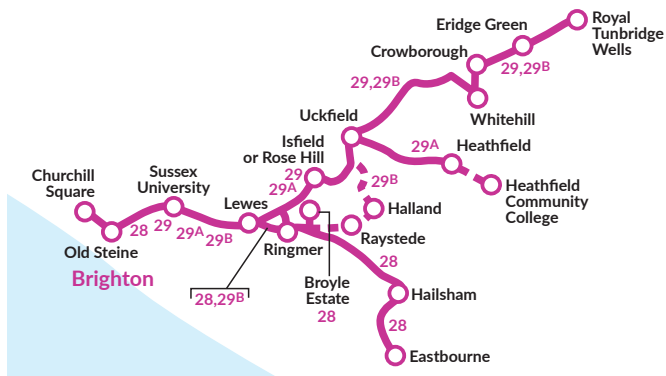


Saturdays effective 13th January, 2024

route number	29	29A	28	29	28	28	29	29A	28	29	28	28	29	29A	28	29	28	28	29	29A	28	28	28	29	29A
Churchill Square (stop G)	1432	1442	1452	1502	1512	1524	1536	1548	1600	1610	1622	1633	1645	1657	1707	1717	1727	1738	1750	1802	1814	1826	1838	1850	1902
Brighton, Old Steine (stop F)	1438	1448	1458	1508	1518	1530	1542	1554	1606	1616	1628	1639	1651	1703	1713	1723	1733	1744	1756	1808	1820	1832	1844	1856	1908
Lewes Road, Bus Garage	1450	1500	1510	1520	1530	1542	1554	1606	1618	1628	1640	1651	1703	1715	1725	1735	1745	1756	1808	1820	1832	1844	1856	1908	1920
Brighton University, The Avenue ⇌	1453	1503	1513	1523	1533	1545	1557	1609	1621	1631	1643	1654	1706	1718	1727	1737	1747	1758	1810	1822	1834	1846	1858	1910	1922
Lewes Road, Coldean Lane	1456	1506	1516	1526	1536	1548	1600	1612	1624	1634	1646	1657	1709	1721	1730	1740	1750	1801	1813	1825	1837	1849	1901	1913	1925
Sussex University A27 ⇌	1459	1509	1519	1529	1539	1551	1603	1615	1627	1637	1649	1700	1712	1724	1733	1743	1753	1804	1816	1828	1840	1852	1904	1916	1928
Kingston Ridge	1503	1513	1523	1533	1543	1555	1607	1619	1631	1641	1653	1704	1716	1728	1737	1747	1757	1808	1820	1832	1844	1856	1908	1920	1932
Lewes, H M Prison	1507	1517	1527	1537	1547	1600	1612	1624	1636	1646	1658	1709	1721	1733	1742	1752	1802	1813	1824	1836	1848	1900	1911	1923	1935
Lewes, School Hill	▼	▼	▼	▼	1553	▼	▼	▼	▼	▼	1704	▼	▼	▼	▼	▼	1808	▼	▼	▼	▼	▼	▼	▼	▼
Lewes, Waitrose arr	1514	1524	1534	1544	▼	1607	1619	1631	1643	1653	▼	1716	1728	1740	1749	1759	▼	1819	1830	1842	1854	▼	1917	1929	1940
Lewes, Waitrose dep	1516	1526	1536	1546	▼	1609	1621	1633	1647	1655	▼	1718	1730	1742	1751	1801	▼	1821	1832	1844	1856	▼	1919	1931	1942
Lewes, Tesco	▼	▼	1540	▼	▼	1613	▼	▼	1651	▼	▼	1722	▼	▼	1755	▼	▼	1824	▼	▼	1859	▼	▼	1922	▼
Church Lane, Police HQ	▼	▼	1542	▼	▼	1615	▼	▼	1653	▼	▼	1724	▼	▼	1757	▼	▼	1826	▼	▼	1859	▼	▼	1924	▼
Malling Hill, Church Lane	1520	1530	1543	1550	▼	1616	1625	1637	1654	1659	▼	1725	1734	1746	1758	1805	▼	1827	1836	1848	1902	▼	1925	1935	1946
Ringmer, Olde Post Office Mews	▼	▼	1548	▼	▼	1621	▼	▼	1659	▼	▼	1730	▼	▼	1803	▼	▼	1832	▼	▼	1906	▼	▼	1929	▼
Ringmer, Broyle Estate	▼	▼	1554	▼	▼	1627	▼	▼	1704	▼	▼	1735	▼	▼	1808	▼	▼	1837	▼	▼	1911	▼	▼	1934	▼
Laughton, Roebuck	▼	▼	1600	▼	▼	1634	▼	▼	1711	▼	▼	1742	▼	▼	1815	▼	▼	1844	▼	▼	1917	▼	▼	1940	▼
Horsebridge, King's Head	▼	▼	1610	▼	▼	1644	▼	▼	1721	▼	▼	1752	▼	▼	1825	▼	▼	1854	▼	▼	1927	▼	▼	1950	▼
Hellingly, Bulrush Lane	▼	▼	1614	▼	▼	1648	▼	▼	1725	▼	▼	1756	▼	▼	1829	▼	▼	1858	▼	▼	1931	▼	▼	1954	▼
Hailsham, Harebeating Lane	▼	▼	1618	▼	▼	1652	▼	▼	1729	▼	▼	1800	▼	▼	1833	▼	▼	1901	▼	▼	1934	▼	▼	1957	▼
Hailsham, High Street arr	▼	▼	1622	▼	▼	1656	▼	▼	1733	▼	▼	1803	▼	▼	1836	▼	▼	1904	▼	▼	1937	▼	▼	2000	▼
<i>Guaranteed connection</i>	▼	▼	▼	▼	▼	▼	▼	▼	▼	▼	▼	▼	▼	▼	▼	▼	▼	▼	▼	▼	▼	▼	▼	▼	▼
Hailsham, High Street dep	▼	▼	1624	▼	▼	1658	▼	▼	1735	▼	▼	▼	▼	▼	▼	▼	▼	▼	▼	▼	▼	▼	▼	▼	▼
Polegate, St. George's Church	▼	▼	1634	▼	▼	1708	▼	▼	1745	▼	▼	▼	▼	▼	▼	▼	▼	▼	▼	▼	▼	▼	▼	▼	▼
Willingdon Triangle	▼	▼	1636	▼	▼	1710	▼	▼	1747	▼	▼	▼	▼	▼	▼	▼	▼	▼	▼	▼	▼	▼	▼	▼	▼
District General Hospital	▼	▼	1641	▼	▼	1715	▼	▼	1752	▼	▼	▼	▼	▼	▼	▼	▼	▼	▼	▼	▼	▼	▼	▼	▼
Eastbourne, Comfield Road	▼	▼	1650	▼	▼	1722	▼	▼	1759	▼	▼	▼	▼	▼	▼	▼	▼	▼	▼	▼	▼	▼	▼	▼	▼
Isfield Station	▼	1538	▼	▼	▼	▼	▼	1645	▼	▼	▼	▼	▼	1754	▼	▼	▼	▼	▼	1856	▼	▼	▼	▼	1953
Rose Hill, Halfway House	1526	▼	1556	▼	▼	1631	▼	▼	1705	▼	▼	1740	▼	▼	1811	▼	▼	1842	▼	▼	▼	▼	▼	▼	1941
Uckfield, Bus Station arr	1537	1550	1607	▼	▼	1642	1657	▼	1716	▼	▼	1750	1806	▼	1821	▼	▼	1852	1908	▼	▼	▼	▼	▼	1951
<i>Guaranteed connection</i>	▼	▼	▼	▼	▼	▼	▼	▼	▼	▼	▼	▼	▼	▼	▼	▼	▼	▼	▼	▼	▼	▼	▼	▼	▼
Uckfield, Bus Station dep	1542	1555	1612	▼	▼	1647	1702	▼	1721	▼	▼	1755	1811	▼	1826	▼	▼	1857	1913	▼	▼	▼	▼	▼	1956
Blackboys, Gun Road	▼	1607	▼	▼	▼	▼	1714	▼	▼	▼	▼	▼	1822	▼	▼	▼	▼	▼	1923	▼	▼	▼	▼	▼	2020
Heathfield, High Street	▼	1617	▼	▼	▼	▼	1724	▼	▼	▼	▼	▼	1831	▼	▼	▼	▼	▼	1932	▼	▼	▼	▼	▼	2028
Heathfield, Tower Street	▼	1619	▼	▼	▼	▼	1726	▼	▼	▼	▼	▼	1833	▼	▼	▼	▼	▼	1934	▼	▼	▼	▼	▼	2030
Five Ash Down, Pig & Butcher	1549	▼	1619	▼	▼	1654	▼	▼	1728	▼	▼	1802	▼	▼	1833	▼	▼	1904	▼	▼	▼	▼	▼	▼	2003
Whitehill, Rose Court	1600	▼	1630	▼	▼	1705	▼	▼	1739	▼	▼	1813	▼	▼	1844	▼	▼	1915	▼	▼	▼	▼	▼	▼	2014
Crowborough, Cross	1607	▼	1637	▼	▼	1711	▼	▼	1745	▼	▼	1819	▼	▼	1850	▼	▼	1921	▼	▼	▼	▼	▼	▼	2020
Erledge Green, Church	1614	▼	1644	▼	▼	1718	▼	▼	1752	▼	▼	1826	▼	▼	1857	▼	▼	1928	▼	▼	▼	▼	▼	▼	2027
Tunbridge Wells, Sainsburys	1621	▼	1651	▼	▼	1725	▼	▼	1759	▼	▼	1833	▼	▼	1904	▼	▼	1934	▼	▼	▼	▼	▼	▼	2033
Tunbridge Wells, Station ⇌	1624	▼	1654	▼	▼	1728	▼	▼	1802	▼	▼	1836	▼	▼	1907	▼	▼	1937	▼	▼	▼	▼	▼	▼	2036
Tunbridge Wells, Monson Road	1625	▼	1655	▼	▼	1729	▼	▼	1803	▼	▼	1837	▼	▼	1908	▼	▼	1938	▼	▼	▼	▼	▼	▼	2037

Routes 28, 29 and 29A are limited stop between Churchill Square and Sussex University stopping only at Old Steine, St Peters Church, Elm Grove/Lewes Road, Lewes Road Bus Garage, Brighton University, Moulsecomb Way, Coldean Lane, BACA (28 & 29B only), Sussex University then all stops.

28,29,29<sup>A</sup>

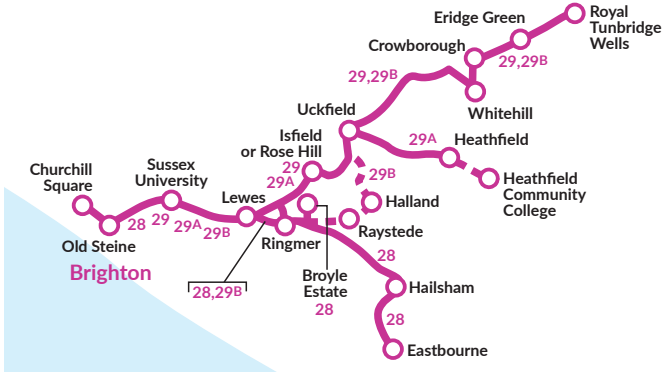


Saturdays effective 13th January, 2024

route number	28	28	29	29A	28	29	28	29	28	29	28	28	28	28
Churchill Square (stop G)	1914	1928	1943	2000	2015	2045	2115	2145	2215	2245	2315	2345	0015	0045
Brighton, Old Steine (stop F)	1920	1934	1949	2005	2020	2050	2120	2150	2220	2250	2320	2350	0020	0050
Lewes Road, Bus Garage	1932	1946	2001	2016	2030	2100	2129	2159	2229	2259	2328	2358	0028	0058
Brighton University, The Avenue	1934	1948	2003	2018	2032	2102	2131	2201	2231	2301	2330	0000	0030	0100
Lewes Road, Coldean Lane	1937	1951	2006	2021	2035	2105	2134	2204	2234	2304	2333	0003	0033	0103
Sussex University A27	1940	1954	2009	2024	2038	2108	2137	2207	2237	2307	2335	0005	0035	0105
Kingston Ridge	1944	1958	2013	2028	2042	2112	2141	2211	2241	2311	2339	0009	0039	0109
Lewes, H M Prison	1947	2001	2016	2031	2045	2115	2144	2214	2244	2314	2342	0012	0042	0112
Lewes, School Hill		2006												
Lewes, Waitrose arr	1952		2021	2036	2050	2120	2149	2219	2249	2319	2347	0017	0047	0117
Lewes, Waitrose dep	1954		2023	2038	2052	2122	2151	2220	2250	2320	2348	0018	0048	0118
Lewes Tesco	1957				2054		2153		2252		2350	0020	0050	0120
Church Lane, Police HQ	1959				2056		2155		2254		2352	0022	0052	0122
Malling Hill, Church Lane	2000		2027	2042	2057	2126	2156	2224	2255	2324	2353	0023	0053	0123
Ringmer, Olde Post Office Mews	2004				2101		2200				2357			
Ringmer, Broyle Estate	2009				2106		2205		2304		0002			
Laughton, Roebuck	2015				2112		2211		2310		0008			
Horsebridge, King's Head	2025				2122		2221		2320		0018			
Hellingly, Bulrush Lane	2029				2126		2225		2324		0022			
Hailsham, Harebeating Lane	2032				2129		2228		2327		0025			
Hailsham, High Street	2035				2132		2231		2330		0028			
Isfield Station				2049										
Rose Hill, Halfway House			2033			2132		2230		2330				
Uckfield, Bus Station arr			2043	2101		2142		2239		2339				
<i>Guaranteed connection</i>														
Uckfield, Bus Station dep			2050	2106		2150								
Blackboys, Gun Road						2116								
Heathfield, High Street						2124								
Heathfield, Tower Street						2126								
Five Ash Down, Pig & Butcher			2057			2157								
Whitehill Rose Court			2107			2207								
Crowborough, Cross			2112			2212								
Eridge Green, Church			2119			2219								
Tunbridge Wells, Sainsburys			2125			2225								
Tunbridge Wells, Station			2128			2228								
Tunbridge Wells, Monson Road			2129			2229								

Routes 28, 29 and 29A are limited stop between Churchill Square and Sussex University stopping only at Old Steine, St Peters Church, Elm Grove/Lewes Road, Lewes Road Bus Garage, Brighton University, Moulsecoomb Way, Coldean Lane, BACA (28 & 29B only), Sussex University then all stops.

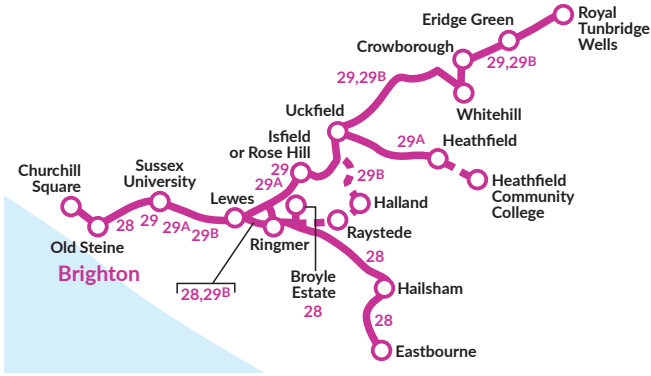
28,29,29<sup>A</sup>



Saturdays effective 13th January, 2024

route number	29	29	28	29A	29	28	29A	28	28	29	28	29A	29	28	28	29	28	29A	29	28	28	29	28	29A
Tunbridge Wells, Royal Victoria Place					0650					0750			0820			0850			0920			0948		
Tunbridge Wells, Station					0653					0753			0823			0853			0923			0951		
Tunbridge Wells, Sainsburys					0657					0757			0827			0858			0928			0957		
Eridge Green, Church					0702					0802			0832			0903			0933			1003		
Crowborough, Cross					0711					0812			0842			0913			0944			1014		
Whitehill, Rose Court					0716					0818			0848			0920			0951			1021		
Five Ash Down, Pig & Butcher					0726					0828			0858			0930			1001			1031		
Heathfield, St. Catherine's Court							0735					0832				0932								1030
Heathfield, High Street							0737					0835				0935								1034
Blackboys, Gun Road							0746					0844				0945								1044
Uckfield, Bus Station arr					0733		0758			0836		0857	0907			0939		0958	1010			1040		1058
Guaranteed connection																								
Uckfield, Bus Station dep		0610	0640		0716	0738		0803		0842		0902	0913			0945		1003	1015			1045		1103
Rose Hill, Halfway House		0618	0648			0747				0852		0902	0923			0955		1025				1055		
Isfield Station						0726		0813				0912					1014							1114
Eastbourne, Gildredge Road											0800			0830		0900			0930				1000	
District General Hospital											0807			0838		0908			0939				1009	
Willingdon Triangle											0812			0843		0913			0944				1015	
Polegate, St. George's Church											0815			0847		0917			0948				1018	
Hailsham, High Street				0634			0725		0755															
Hailsham, Tesco arr				0636			0727		0757				0825		0857		0927		0958				1028	
Guaranteed connection																								
Hailsham, Tesco dep				0636			0727		0757				0830		0900		0930		1000				1030	
Hailsham, Harebeating Lane				0639			0729		0759				0832		0902		0932		1002				1032	
Hellingly, Bulrush Lane				0643			0733		0803				0836		0906		0936		1006				1036	
Horsebridge, King's Head				0646			0736		0806				0839		0909		0940		1010				1040	
Laughton, Roebuck				0656			0746		0816				0849		0919		0950		1020				1050	
Ringmer, Broyle Estate				0703			0753		0823				0857		0927		0958		1028				1058	
Ringmer, Olde Post Office Mews				0708			0759		0829				0903		0934		1005		1035				1105	
Malling Hill, Church Lane	0625	0655		0734	0754		0821			0859		0920	0930			1002		1022	1032			1102		1122
Malling, Barn Road				0713			0804		0834				0908		0939		1010		1040				1110	
Church Lane, Police HQ				0714			0805		0835				0909		0940		1011		1041				1111	
Lewes Tesco				0716			0807		0837				0911		0943		1014		1044				1114	
Lewes, School Hill arr	0628	0658	0718	0737	0757	0809	0824	0841		0902	0913	0924	0934	0945		1006	1016	1026	1036	1046		1106	1116	1126
Lewes, School Hill dep	0630	0700	0720	0739	0759	0811	0826	0841	0853	0904	0915	0926	0936	0947	0958	1008	1018	1028	1038	1048	1058	1108	1118	1128
Lewes Prison	0635	0705	0725	0745	0805	0817	0832	0847	0859	0911	0922	0933	0943	0954	1005	1015	1025	1035	1045	1055	1105	1115	1125	1135
Kingston Ridge	0637	0707	0727	0747	0807	0819	0835	0850	0902	0914	0925	0936	0946	0957	1008	1018	1028	1038	1048	1058	1108	1118	1128	1138
Falmer Station	0642	0712	0732	0752	0812	0824	0840	0855	0907	0919	0930	0941	0951	1002	1013	1023	1033	1043	1053	1103	1113	1123	1133	1143
Lewes Road, Coldean Lane A270	0644	0714	0734	0754	0814	0827	0843	0858	0910	0922	0933	0944	0954	1005	1016	1026	1036	1046	1056	1106	1116	1126	1136	1146
Brighton University, The Avenue	0647	0717	0737	0757	0817	0830	0846	0901	0913	0925	0936	0947	0957	1008	1019	1029	1039	1049	1059	1109	1119	1129	1139	1149
Lewes Road, Bus Garage	0651	0721	0741	0801	0821	0834	0850	0905	0917	0929	0941	0952	1002	1013	1024	1034	1044	1054	1104	1114	1124	1134	1144	1154
Brighton, Old Steine (H)	0659	0729	0749	0809	0829	0842	0858	0913	0926	0938	0950	1001	1012	1023	1034	1044	1054	1104	1114	1124	1134	1144	1154	1204
Brighton, Imperial Arcade (J)	0702	0732	0752	0812	0832	0846	0902	0917	0930	0942	0954	1005	1016	1027	1038	1048	1058	1108	1118	1128	1138	1148	1158	1208

Routes 28, 29 and 29A are limited stop between Sussex University and Churchill Square stopping only at BACA (28 & 29B only), Coldean Lane, Moulsecomb Way, Brighton University, Lewes Road Bus Garage, Elm Grove, St Peters Church, Valley Gardens, Old Steine and North Street.



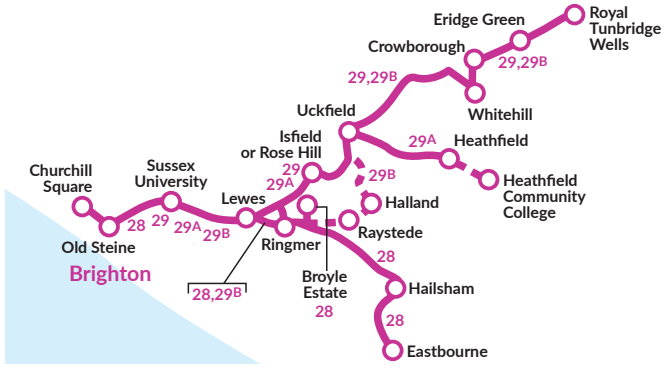
28,29,29<sup>A</sup>



Saturdays effective 13th January, 2024

route number	29	28	28	29	28	29A	29	28	28	29	28	29A	29	28	28	29	28	29A	29	28	28	29	28	29A	
Tunbridge Wells, Royal Victoria Place	1018			1048			1116			1146			1216			1248			1319			1350			
Tunbridge Wells, Station	1021			1051			1120			1150			1220			1252			1323			1354			
Tunbridge Wells, Sainsburys	1027			1057			1126			1156			1226			1258			1329			1400			
Eridge Green, Church	1033			1103			1133			1203			1233			1305			1335			1406			
Crowborough, Cross	1044			1114			1144			1214			1244			1315			1345			1416			
Whitehill, Rose Court	1051			1121			1151			1221			1251			1321			1351			1422			
Five Ash Down, Pig & Butcher	1101			1131			1201			1231			1301			1331			1401			1432			
Heathfield, St. Catherine's Court						1130						1230						1330						1430	
Heathfield, High Street						1134						1234						1334						1434	
Blackboys, Gun Road						1144						1244						1344						1444	
Uckfield, Bus Station arr	1110			1140			1158	1210		1240			1258	1310		1340			1358	1410				1440	1458
Guaranteed connection																									
Uckfield, Bus Station dep	1115			1145			1203	1215		1245			1303	1315		1345			1403	1415				1445	1503
Rose Hill, Halfway House	1125			1155			1225			1255			1325			1355			1425			1455			
Isfield Station						1214						1314						1414							1514
Eastbourne, Gildredge Road		1030			1100			1130			1200			1230			1300			1330			1401		
District General Hospital		1039			1109			1139			1209			1239			1309			1339			1410		
Willington Triangle		1045			1115			1145			1215			1245			1315			1345			1415		
Polegate, St. George's Church		1048			1118			1148			1218			1248			1318			1348			1418		
Hailsham, Tesco arr		1058			1128			1158			1228			1258			1328			1358			1428		
Guaranteed connection																									
Hailsham, Tesco dep		1100			1130			1200			1230			1300			1330			1400			1430		
Hailsham, Harebeating Lane		1102			1132			1202			1232			1302			1332			1402			1432		
Hellingly, Bulrush Lane		1106			1136			1206			1236			1306			1336			1406			1437		
Horsebridge, King's Head		1110			1140			1210			1240			1310			1340			1410			1440		
Laughton, Roebuck		1120			1150			1220			1250			1320			1350			1420			1450		
Ringmer, Broyle Estate		1128			1158			1228			1258			1328			1358			1428			1458		
Ringmer, Olde Post Office Mews		1135			1205			1235			1305			1335			1405			1435			1505		
Malling Hill, Church Lane	1132			1202			1222	1232		1302			1322	1332		1402			1422	1432			1502		1522
Malling, Barn Road		1140			1210			1240			1310			1340			1410			1440			1510		
Church Lane, Police HQ		1141			1211			1241			1311			1341			1411			1441			1511		
Lewes Tesco		1144			1214			1244			1314			1344			1414			1444			1514		
Lewes, School Hill arr	1136	1146		1206	1216	1226	1236	1246		1306	1316	1326	1336	1346		1406	1416	1426	1436	1446			1506	1516	1526
Lewes, School Hill dep	1138	1148	1158	1208	1218	1228	1238	1248	1258	1308	1318	1328	1338	1348	1358	1408	1418	1428	1438	1448	1458	1458	1508	1518	1528
Lewes Prison	1145	1155	1205	1215	1225	1235	1245	1255	1305	1315	1325	1335	1345	1355	1405	1415	1425	1435	1445	1455	1505	1515	1525	1535	
Kingston Ridge	1148	1158	1208	1218	1228	1238	1248	1258	1308	1318	1328	1338	1348	1358	1408	1418	1428	1438	1448	1458	1508	1518	1528	1538	
Falmer, Station	1153	1203	1213	1223	1233	1243	1253	1303	1313	1323	1333	1343	1353	1403	1413	1423	1433	1443	1454	1504	1514	1524	1534	1544	
Lewes Road Coldean Lane A270	1156	1206	1216	1226	1236	1246	1256	1306	1316	1326	1336	1346	1356	1406	1416	1426	1436	1446	1457	1507	1517	1527	1537	1547	
Brighton University, The Avenue	1159	1209	1219	1229	1239	1249	1259	1309	1319	1329	1339	1349	1359	1409	1419	1429	1439	1449	1500	1510	1520	1530	1541	1550	
Lewes Road, Bus Garage	1204	1214	1224	1234	1244	1254	1304	1314	1324	1334	1344	1354	1404	1414	1424	1434	1444	1454	1505	1515	1525	1535	1546	1555	
Brighton, Old Steine (H)	1214	1224	1234	1244	1254	1304	1314	1324	1334	1344	1354	1404	1414	1424	1434	1444	1454	1504	1515	1525	1535	1545	1556	1606	
Brighton, Imperial Arcade (J)	1218	1228	1238	1248	1258	1308	1318	1328	1338	1348	1358	1408	1418	1428	1438	1448	1458	1508	1519	1529	1539	1549	1600	1610	

Routes 28, 29 and 29A are limited stop between Sussex University and Churchill Square stopping only at BACA (28 & 29B only), Coldean Lane, Moulsecomb Way, Brighton University, Lewes Road Bus Garage, Elm Grove, St Peters Church, Valley Gardens, Old Steine and North Street.



28,29,29<sup>A</sup>



Saturdays effective 13th January, 2024

route number	29	28	28	29	28	29A	29	28	29	28	29A	29	28	29	28	29A	29	28	29	28	29A	29	28	29A		
Tunbridge Wells, Royal Victoria Place	1420			1450		1520	1550		1620	1650	1730	1807		1858												
Tunbridge Wells, Station	1424			1454		1524	1554		1624	1654	1734	1810		1901												
Tunbridge Wells, Sainsburys	1430			1500		1530	1600		1630	1700	1740	1816		1907												
Eriddle Green, Church	1436			1506		1536	1606		1636	1706	1746	1822		1913												
Crowborough, Cross	1446			1516		1546	1616		1646	1716	1756	1832		1922												
Whitehill, Rose Court	1452			1522		1552	1622		1652	1722	1802	1837		1927												
Five Ash Down, Pig & Butcher	1502			1532		1602	1632		1702	1732	1812	1847		1937												
Heathfield, St. Catherine's Court	▼	▼	▼	▼	▼	1532	▼	▼	1632	▼	▼	▼	▼	1742	▼	▼	▼	▼	▼	▼	1852	▼	▼	1952		
Heathfield, High Street	▼	▼	▼	▼	▼	1535	▼	▼	1635	▼	▼	▼	▼	1744	▼	▼	▼	▼	▼	▼	1854	▼	▼	1954		
Blackboys, Gun Road	▼	▼	▼	▼	▼	1545	▼	▼	1645	▼	▼	▼	▼	1754	▼	▼	▼	▼	▼	▼	1904	▼	▼	2004		
Uckfield, Bus Station arr	1510			1540		1558	1610		1640	1658	1710	1740		1807	1820					1854	1917	1943		2017		
Guaranteed connection	▼	▼	▼	▼	▼	▼	▼	▼	▼	▼	▼	▼	▼	▼	▼	▼	▼	▼	▼	▼	▼	▼	▼	▼	▼	
Uckfield, Bus Station dep	1515			1545		1603	1615		1645	1703	1715	1745		1812	1826					1859	1924	1948		2022		
Rose Hill, Halfway House	1525			1555		▼	1625		1655	▼	1725	1755		▼	1836					1908	▼	▼	1957	▼		
Isfield Station	▼	▼	▼	▼	▼	1614	▼	▼	▼	▼	▼	▼	▼	▼	▼	▼	▼	▼	▼	▼	▼	▼	▼	2031		
Eastbourne, Gildredge Road	▼	1431	▼	▼	1501	▼	▼	1533	▼	▼	1604	▼	▼	1636	▼	▼	1706	▼	▼	▼	▼	▼	▼	▼	▼	
District General Hospital	▼	1440	▼	▼	1510	▼	▼	1542	▼	▼	1612	▼	▼	1644	▼	▼	1714	▼	▼	▼	▼	▼	▼	▼	▼	
Willingdon Triangle	▼	1445	▼	▼	1515	▼	▼	1547	▼	▼	1617	▼	▼	1649	▼	▼	1719	▼	▼	▼	▼	▼	▼	▼	▼	
Polegate, St. George's Church	▼	1448	▼	▼	1518	▼	▼	1550	▼	▼	1620	▼	▼	1652	▼	▼	1722	▼	▼	▼	▼	▼	▼	▼	▼	
Hailsham, High Street	▼	▼	▼	▼	▼	▼	▼	▼	▼	▼	▼	▼	▼	▼	▼	▼	▼	▼	▼	▼	▼	▼	▼	▼	▼	
Hailsham, Tesco arr	▼	1458	▼	▼	1528	▼	▼	1600	▼	▼	1630	▼	▼	1702	▼	▼	1732	▼	▼	▼	▼	▼	▼	▼	▼	
Guaranteed connection	▼	▼	▼	▼	▼	▼	▼	▼	▼	▼	▼	▼	▼	▼	▼	▼	▼	▼	▼	▼	▼	▼	▼	▼	▼	
Hailsham, Tesco dep	▼	1500	▼	▼	1530	▼	▼	1602	▼	▼	1632	▼	▼	1704	▼	▼	1734	▼	▼	▼	▼	▼	▼	▼	▼	
Hailsham, Harebeating Lane	▼	1502	▼	▼	1532	▼	▼	1604	▼	▼	1634	▼	▼	1706	▼	▼	1736	▼	▼	▼	▼	▼	▼	▼	▼	
Hellingly, Bulrush Lane	▼	1507	▼	▼	1537	▼	▼	1609	▼	▼	1639	▼	▼	1711	▼	▼	1741	▼	▼	▼	▼	▼	▼	▼	▼	
Horsebridge, King's Head	▼	1510	▼	▼	1540	▼	▼	1612	▼	▼	1642	▼	▼	1714	▼	▼	1744	▼	▼	▼	▼	▼	▼	▼	▼	
Laughton, Roebuck	▼	1520	▼	▼	1550	▼	▼	1622	▼	▼	1652	▼	▼	1724	▼	▼	1754	▼	▼	▼	▼	▼	▼	▼	▼	
Ringmer, Broyle Estate	▼	1528	▼	▼	1558	▼	▼	1630	▼	▼	1700	▼	▼	1732	▼	▼	1802	▼	▼	▼	▼	▼	▼	▼	▼	
Ringmer, Olde Post Office Mews	▼	1535	▼	▼	1605	▼	▼	1637	▼	▼	1706	▼	▼	1738	▼	▼	1808	▼	▼	▼	▼	▼	▼	▼	▼	
Malling Hill, Church Lane	1532	▼	▼	1602	▼	1622	1632	▼	1702	▼	1722	1732	▼	1802	▼	▼	1830	1843	▼	1915	▼	▼	1942	2004	▼	2039
Malling, Barn Road	▼	1540	▼	▼	1610	▼	▼	1642	▼	▼	1711	▼	▼	1743	▼	▼	1813	▼	▼	▼	▼	▼	▼	▼	▼	
Church Lane, Police HQ	▼	1541	▼	▼	1611	▼	▼	1643	▼	▼	1712	▼	▼	1744	▼	▼	1814	▼	▼	▼	▼	▼	▼	▼	▼	
Lewes Tesco	▼	1544	▼	▼	1614	▼	▼	1646	▼	▼	1714	▼	▼	1746	▼	▼	1816	▼	▼	▼	▼	▼	▼	▼	▼	
Lewes, School Hill arr	1536	1546	▼	1606	1616	1626	1636	1648	1706	1716	1725	1735	1748	1805	1818	1833	1846	1903	1918	1933	1945	2006	2026	2041		
Lewes, School Hill dep	1538	1548	1558	1608	1618	1628	1638	1653	1708	1718	1728	1738	1752	1807	1820	1835	1850	1905	1920	1935	1948	2008	2028	2043		
Lewes Prison	1546	1556	1606	1616	1626	1636	1646	1701	1716	1726	1736	1746	1800	1815	1828	1843	1858	1913	1927	1942	1955	2015	2034	2049		
Kingston Ridge	1549	1559	1609	1619	1629	1639	1649	1704	1719	1729	1739	1749	1803	1818	1831	1846	1901	1916	1930	1945	1958	2017	2036	2051		
Falmer Station	1555	1605	1615	1625	1635	1645	1655	1710	1725	1735	1745	1755	1809	1824	1837	1852	1906	1921	1935	1950	2003	2022	2041	2056		
Lewes Road, Coldean Lane A270	1558	1608	1618	1628	1638	1648	1658	1713	1728	1738	1748	1758	1812	1827	1840	1855	1909	1924	1938	1952	2005	2024	2043	2058		
Brighton University, The Avenue	1601	1611	1621	1631	1641	1651	1701	1716	1731	1741	1751	1801	1815	1830	1843	1858	1912	1927	1941	1955	2008	2027	2046	2101		
Lewes Road, Bus Garage	1606	1616	1626	1636	1646	1656	1706	1721	1736	1746	1756	1806	1820	1835	1848	1903	1916	1931	1945	1959	2012	2031	2050	2105		
Brighton, Old Steine (H)	1617	1627	1637	1647	1657	1707	1717	1732	1746	1756	1806	1816	1830	1845	1858	1912	1925	1940	1954	2007	2020	2039	2058	2113		
Brighton, Imperial Arcade (J)	1621	1631	1641	1651	1701	1711	1721	1736	1750	1800	1810	1820	1834	1848	1901	1915	1928	1943	1957	2010	2023	2042	2101	2116		

Routes 28, 29 and 29A are limited stop between Sussex University and Churchill Square stopping only at BACA (28 & 29B only), Coldean Lane, Moulsecoomb Way, Brighton University, Lewes Road Bus Garage, Elm Grove, St Peters Church, Valley Gardens, Old Steine and North Street.

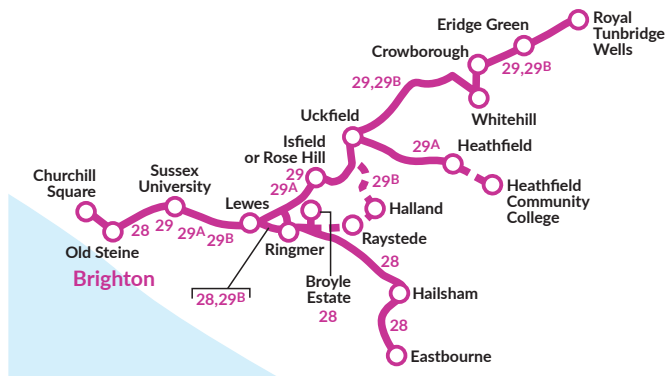


Saturdays effective 13th January, 2024

route number	29	28	29	28	29	28	29
Tunbridge Wells, Royal Victoria Place	1952		2052		2152		2252
Tunbridge Wells, Station	1955		2055		2155		2255
Tunbridge Wells, Sainsburys	1959		2059		2159		2259
Eridge Green, Church	2005		2105		2205		2305
Crowborough, Cross	2013		2113		2213		2313
Whitehill, Rose Court	2018		2118		2218		2318
Five Ash Down, Pig & Butcher	2028		2128		2228		2328
Uckfield, Bus Station arr	2034		2134		2234		2334
Guaranteed connection	↓		↓		↓		↓
Uckfield, Bus Station dep	2039		2139		2239		2339
Rose Hill, Halfway House	2047		2147		2247		2347
Hailsham, High Street	▼	2045	▼	2145	▼	2245	▼
Hailsham, Tesco	▼	2048	▼	2148	▼	2247	▼
Hailsham, Harebeating Lane	▼	2050	▼	2150	▼	2249	▼
Hellingly, Bulrush Lane	▼	2054	▼	2154	▼	2253	▼
Horsebridge, King's Head	▼	2057	▼	2157	▼	2256	▼
Laughton, Roebuck	▼	2107	▼	2207	▼	2307	▼
Ringmer, Broyle Estate	▼	2113	▼	2213	▼	2313	▼
Ringmer, Olde Post Office Mews	▼	2118	▼	2218	▼	2318	▼
Malling Hill, Church Lane	2054	▼	2154	▼	2254	▼	2354
Malling, Barn Road	▼	2122	▼	2222	▼	2322	▼
Church Lane, Police HQ	▼	2123	▼	2223	▼	2323	▼
Lewes Tesco	▼	2125	▼	2225	▼	2325	▼
Lewes, School Hill arr	2056	2126	2156	2226	2256	2326	2356
Lewes, School Hill dep	2058	2128	2158	2228	2258	2328	2358
Lewes Prison	2104	2134	2204	2234	2304	2334	0004
Kingston Ridge	2106	2136	2206	2236	2306	2336	0006
Falmer Station	2111	2141	2211	2241	2311	2341	0011
Lewes Road, Coldean Lane A270	2113	2143	2213	2243	2313	2343	0013
Brighton University, The Avenue	2116	2146	2216	2246	2316	2346	0016
Lewes Road, Bus Garage	2120	2150	2220	2250	2320	2350	0020
Brighton, Old Steine (H)	2128	2158	2228	2258	2328	2358	0028
Brighton, Imperial Arcade (J)	2131	2201	2231	2301	2331	0001	0031

Routes 28, 29 are limited stop between Sussex University and Churchill Square stopping only at BACA (28 & 29B only), Coldean Lane, Moulsecomb Way, Brighton University, Lewes Road Bus Garage, Elm Grove, St Peters Church, Valley Gardens, Old Steine and North Street.

# 28,29,29A

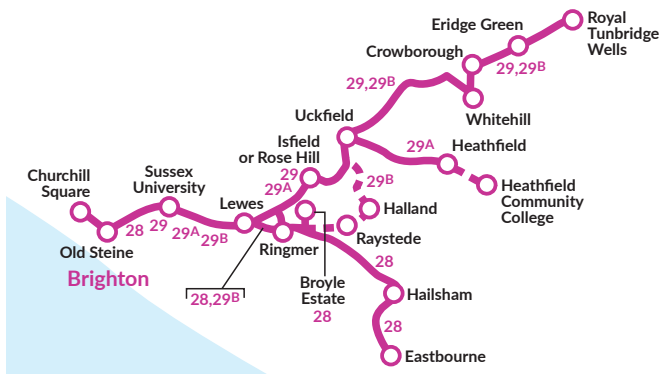


**Sundays and Public Holidays effective 7th January, 2024**

route number	29	29A	29	28	29	28	29	29A	28	29	29A	28	29	29A	28	29	29A	28	29	29A	28	29	29A	28	29	29A
Churchill Square (stop G)			0800	0830	0858	0928	0950	1008	1026	1045	1104	1124	1144	1204	1226	1248	1309	1330	1351	1411	1433	1455	1517	1539	1601	1623
Brighton, Old Steine (stop F)			0804	0834	0902	0932	0954	1013	1031	1050	1109	1129	1150	1210	1232	1254	1315	1336	1357	1417	1439	1501	1523	1545	1607	1629
Lewes Road, Bus Garage	0711	0741	0812	0842	0911	0941	1004	1023	1042	1101	1121	1141	1202	1222	1244	1306	1327	1348	1409	1429	1451	1513	1535	1557	1619	1641
Brighton University, The Avenue	0713	0743	0814	0844	0913	0943	1006	1025	1045	1104	1124	1144	1205	1225	1247	1309	1330	1351	1412	1432	1454	1516	1538	1600	1622	1644
Lewes Road, Coldean Lane	0716	0746	0817	0847	0916	0946	1009	1028	1048	1107	1127	1147	1208	1228	1250	1312	1333	1354	1415	1435	1457	1519	1541	1603	1625	1647
Sussex University A27	0718	0748	0819	0849	0919	0949	1012	1031	1051	1111	1131	1151	1212	1232	1254	1316	1337	1358	1419	1439	1501	1523	1545	1607	1629	1651
Kingston Ridge	0722	0752	0823	0853	0923	0953	1016	1036	1056	1116	1136	1156	1217	1237	1259	1321	1342	1403	1423	1443	1505	1527	1549	1611	1633	1655
Lewes, H M Prison	0724	0755	0826	0857	0928	0958	1021	1041	1101	1121	1141	1201	1222	1242	1304	1326	1346	1407	1427	1447	1509	1531	1553	1615	1637	1659
Lewes, Waitrose arr	0729	0800	0831	0902	0933	1004	1027	1047	1107	1127	1147	1207	1228	1248	1310	1332	1352	1413	1433	1453	1515	1537	1559	1621	1643	1705
Lewes, Waitrose dep	0731	0802	0833	0904	0935	1006	1029	1049	1109	1129	1149	1209	1230	1250	1312	1334	1354	1415	1435	1455	1517	1539	1601	1623	1645	1707
Lewes Tesco				0907		1009			1113			1213			1316			1419			1521			1627		
Church Lane, Police HQ				0909		1011			1115			1215			1318			1421			1523			1629		
Malling Hill, Church Lane	0735	0806	0837	0910	0939	1012	1033	1053	1116	1134	1154	1216	1235	1255	1319	1339	1359	1422	1440	1500	1524	1544	1606	1630	1650	1711
Ringmer, Olde Post Office Mews				0914		1016			1121			1221			1324			1427			1529			1635		
Ringmer, Broyle Estate				0919		1021			1126			1226			1329			1432			1534			1640		
Laughton, Roebuck				0925		1027			1133			1233			1336			1439			1541			1647		
Horsebridge, King's Head				0935		1037			1143			1243			1346			1449			1551			1657		
Hellingly, Bulrush Lane				0939		1041			1147			1247			1350			1453			1555			1701		
Hailsham, Harebeating Lane				0942		1044			1150			1250			1353			1456			1558			1704		
Hailsham, High Street				0945		1047			1153			1253			1356			1459			1601			1707		
Isfield Station		0813						1101				1202			1303			1407			1508			1614		1718
Rose Hill, Halfway House	0741		0843		0945		1039			1140			1241		1345			1446			1550			1656		
Uckfield, Bus Station arr	0750	0823	0852		0954		1048	1111		1149	1212		1250	1313		1354	1417		1455	1518		1559	1624		1705	1728
Guaranteed connection																										
Uckfield, Bus Station dep	0756		0857		0959		1053	1113		1154	1214		1255	1315		1359	1419		1500	1520		1604	1626		1710	1730
Blackboys, Gun Road							1124			1225			1326			1430			1531			1637			1741	
Heathfield, High Street							1133			1234			1335			1439			1540			1646			1750	
Heathfield, Tower Street							1135			1236			1337			1441			1542			1648			1752	
Five Ash Down, Pig & Butcher	0803		0904		1006		1100			1201			1302			1406			1507			1611			1716	
Whitehill, Rose Court	0815		0916		1018		1112			1213			1314			1418			1518			1622			1727	
Crowborough, Cross	0820		0922		1025		1119			1220			1321			1424			1524			1628			1733	
Eridge Green, Church	0828		0930		1033		1127			1228			1329			1432			1531			1635			1740	
Tunbridge Wells, Sainsburys	0835		0937		1040		1135			1236			1337			1440			1539			1642			1746	
Tunbridge Wells, Station	0839		0941		1044		1140			1241			1342			1444			1543			1646			1750	
Tunbridge Wells, Monson Road	0840		0942		1045		1141			1242			1343			1445			1544			1647			1751	

Routes 28, 29 and 29A are limited stop between Churchill Square and Sussex University stopping only at Old Steine, St Peters Church, Elm Grove/Lewes Road, Lewes Road Bus Garage, Brighton University, Moulsecomb Way, Coldean Lane, BACA (28 & 29B only), Sussex University then all stops.

# 28,29,29A



**Sundays and Public Holidays** effective 7th January, 2024

route number	28	29	29A	28	29	28	29A	28	28	28	28	28	
Churchill Square (stop G)	1646	1709	1732	1755	1817	1840	1910	1940	2010	2040	2110	2210	2330
Brighton, Old Steine (stop F)	1652	1715	1738	1801	1823	1845	1915	1945	2015	2045	2115	2215	2335
Lewes Road, Bus Garage	1704	1727	1749	1811	1833	1855	1925	1955	2025	2055	2123	2223	2343
Brighton University, The Avenue ⇌	1707	1730	1752	1814	1836	1857	1927	1957	2027	2057	2125	2225	2345
Lewes Road, Coldean Lane	1710	1733	1755	1817	1839	1900	1930	2000	2030	2100	2128	2228	2348
Sussex University A27 ⇌	1714	1737	1758	1820	1842	1903	1933	2003	2032	2102	2130	2230	2350
Kingston Ridge	1718	1741	1802	1824	1846	1907	1937	2007	2036	2106	2134	2234	2354
Lewes, H M Prison	1722	1745	1806	1828	1849	1910	1940	2010	2039	2109	2137	2237	2357
Lewes, School Hill	▼	▼	▼	▼	▼	▼	▼	▼	2044	▼	2142	2242	0002
Lewes, Waitrose arr	1728	1751	1812	1834	1854	1915	1945	2015					2114
Lewes, Waitrose dep	1730	1753	1814	1836	1856	1917	1947	2017					2116
Lewes Tesco	1733	▼	▼	1839	▼	1920	▼	2020					2119
Church Lane, Police HQ	1735	▼	▼	1841	▼	1922	▼	2022					2121
Malling Hill, Church Lane	1736	1757	1818	1842	1900	1923	1951	2023					2122
Ringmer, Olde Post Office Mews	1741	▼	▼	1846	▼	1927	▼	2027					2126
Ringmer, Broyle Estate	1746	▼	▼	1851	▼	1931	▼	2031					2130
Laughton, Roebuck	1753	▼	▼	1858	▼	▼	▼	▼					
Horsebridge, King's Head	1803	▼	▼	1908	▼	▼	▼	▼					
Hellingly, Bulrush Lane	1807	▼	▼	1912	▼	▼	▼	▼					
Hailsham, Harebeating Lane	1810	▼	▼	1915	▼	▼	▼	▼					
Hailsham, High Street	1813	▼	▼	1918	▼	▼	▼	▼					
Isfield Station	▼	▼	1825	▼	▼	▼	1958	▼					
Rose Hill, Halfway House	1803	▼	▼	1906	▼	▼	▼	▼					
Uckfield, Bus Station arr	1812	1835	▼	1915	▼	▼	2007	▼					
<i>Guaranteed connection</i>	▼	▼	▼	▼	▼	▼	▼	▼					
Uckfield, Bus Station dep	1817	1837	▼	1920	▼	▼	▼	▼					
Blackboys, Gun Road	▼	▼	1847	▼	▼	▼	▼	▼					
Heathfield, High Street	▼	▼	1856	▼	▼	▼	▼	▼					
Heathfield, Tower Street	▼	▼	1858	▼	▼	▼	▼	▼					
Five Ash Down, Pig & Butcher	1823	▼	▼	1926	▼	▼	▼	▼					
Whitehill, Rose Court	1834	▼	▼	1937	▼	▼	▼	▼					
Crowborough, Cross	1839	▼	▼	1942	▼	▼	▼	▼					
Eridge Green, Church	1846	▼	▼	1949	▼	▼	▼	▼					
Tunbridge Wells, Sainsburys	1852	▼	▼	1955	▼	▼	▼	▼					
Tunbridge Wells, Station ⇌	1855	▼	▼	1958	▼	▼	▼	▼					
Tunbridge Wells, Monson Road	1857	▼	▼	2000	▼	▼	▼	▼					

Routes 28, 29 and 29A are limited stop between Churchill Square and Sussex University stopping only at Old Steine, St Peters Church, Elm Grove/Lewes Road, Lewes Road Bus Garage, Brighton University, Moulsecoomb Way, Coldean Lane, BACA (28 & 29B only), Sussex University then all stops.

# 28,29,29A

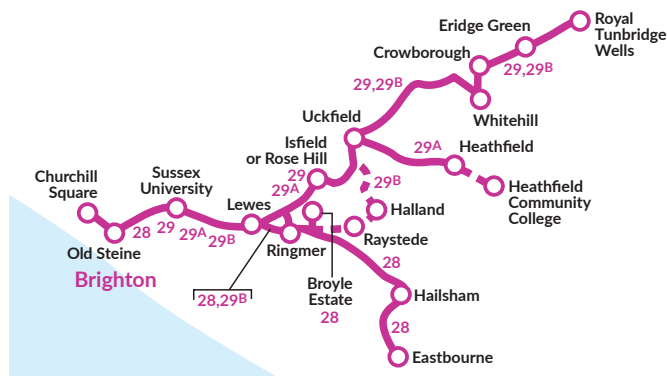


**Sundays and Public Holidays effective 7th January, 2024**

route number	28	28	28	28	29A	28	29	29A	28	29	29A	28	29	29A	28	29	29A	28	29	29A	28	29	29A	28	29	
Tunbridge Wells, Royal Victoria Place							0858		0958			1059		1202		1302		1406		1508						
Tunbridge Wells, Station ⇌							0901		1001			1103		1206		1306		1410		1512						
Tunbridge Wells, Sainsburys							0905		1005			1109		1212		1312		1416		1518						
Eridge Green, Church							0910		1010			1114		1217		1317		1421		1523						
Crowborough, Cross							0919		1019			1123		1226		1326		1430		1532						
Whitehill, Rose Court							0925		1025			1129		1232		1332		1436		1538						
Five Ash Down, Pig & Butcher							0935		1035			1139		1242		1342		1446		1548						
Heathfield, St. Catherine's Court								0942			1042			1147			1248			1349			1453			
Heathfield, High Street								0944			1044			1149			1250			1351			1455			
Blackboys, Gun Road								0952			1052			1157			1258			1359			1503			
Uckfield, Bus Station arr							0943	1004		1043	1105		1147	1210		1250	1311		1350	1412		1454	1516			1556
Guaranteed connection								↓		↓	↓		↓	↓		↓	↓		↓	↓		↓	↓		↓	↓
Uckfield, Bus Station dep							0852	0948	1006		1048	1107		1152	1212		1255	1313		1355	1414		1459	1518		1601
Rose Hill, Halfway House								0956			1057			1201			1304			1404			1508			1610
Isfield Station							0902		1016			1117			1222			1323			1424			1528		
Hailsham, High Street								0900			1000			1102			1206			1306			1409			1513
Hailsham, Tesco								0902			1002			1104			1208			1308			1411			1515
Hailsham, Harebeating Lane								0905			1005			1107			1211			1311			1414			1518
Hellingly, Bulrush Lane								0909			1010			1112			1216			1316			1419			1523
Horsebridge, King's Head								0912			1013			1115			1219			1319			1422			1526
Laughton, Roebuck								0922			1023			1125			1229			1329			1432			1536
Ringmer, Broyle Estate							0829	0929			1030			1132			1236			1336			1439			1543
Ringmer, Olde Post Office Mews							0835	0935			1037			1139			1243			1343			1445			1549
Malling Hall, Church Lane								0910		1003	1024		1104	1125		1208	1230		1311	1331		1411	1432		1515	1536
Malling, Barn Road							0840	0940			1042			1144			1248			1348			1450			1554
Church Lane, Police HQ							0841	0941			1043			1145			1249			1349			1451			1555
Lewes Tesco							0843	0943			1046			1148			1252			1352			1454			1558
Lewes, School Hill arr							0845	0913	0945	1006	1027	1048	1108	1129	1151	1212	1234	1255	1315	1335	1355	1415	1436	1457	1519	1540
Lewes, School Hill dep	0715	0745	0815	0847	0915	0947	1008	1029	1050	1110	1131	1153	1214	1236	1257	1317	1337	1357	1417	1438	1459	1521	1542	1603	1623	
Lewes Prison	0721	0751	0821	0853	0923	0955	1016	1037	1059	1119	1140	1202	1223	1245	1306	1326	1346	1406	1426	1446	1506	1528	1549	1610	1630	
Kingston Ridge	0724	0754	0824	0856	0926	0958	1019	1040	1102	1122	1143	1205	1226	1248	1309	1329	1349	1409	1429	1449	1509	1531	1552	1613	1633	
Falmer, Station ⇌	0728	0758	0828	0900	0931	1003	1024	1045	1107	1127	1148	1210	1231	1253	1314	1334	1354	1414	1434	1454	1514	1536	1557	1618	1638	
Lewes Road, Coldean Lane A270	0730	0800	0830	0903	0934	1006	1027	1048	1110	1130	1151	1213	1234	1256	1317	1337	1357	1417	1437	1457	1517	1539	1600	1621	1641	
Brighton University, The Avenue ⇌	0733	0803	0833	0906	0937	1009	1030	1051	1113	1133	1154	1216	1237	1259	1320	1340	1400	1420	1440	1500	1520	1542	1603	1624	1644	
Lewes Road, Bus Garage	0736	0806	0836	0910	0941	1013	1034	1055	1117	1137	1158	1220	1241	1303	1324	1344	1404	1424	1444	1504	1524	1546	1607	1628	1648	
Brighton, Old Steine (H)	0744	0814	0844	0918	0950	1022	1043	1105	1127	1148	1209	1231	1252	1314	1335	1355	1415	1435	1455	1515	1535	1556	1617	1638	1658	
Brighton, Imperial Arcade (J)	0747	0817	0847	0921	0953	1026	1047	1109	1131	1152	1213	1235	1256	1318	1339	1359	1419	1439	1459	1519	1539	1600	1621	1642	1702	

Routes 28, 29 and 29A are limited stop between Sussex University and Churchill Square stopping only at BACA (28 & 29B only), Coldean Lane, Moulsecomb Way, Brighton University, Lewes Road Bus Garage, Elm Grove, St Peters Church, Valley Gardens, Old Steine and North Street.

# 28,29,29A



**Sundays and Public Holidays** effective 7th January, 2024

route number	29A	28	29	29A	28	29	29A	29	28	29	28	29	28	28
Tunbridge Wells, Royal Victoria Place			1611			1714		1814		1915		2015		
Tunbridge Wells, Station			1615			1718		1817		1918		2018		
Tunbridge Wells, Sainsburys			1620			1723		1821		1922		2022		
Eridge Green, Church			1625			1728		1826		1927		2027		
Crowborough, Cross			1634			1737		1835		1936		2036		
Whitehill, Rose Court			1640			1743		1839		1940		2040		
Five Ash Down, Pig & Butcher			1650			1753		1849		1950		2050		
Heathfield, St. Catherine's Court	1554		1700			1806								
Heathfield, High Street	1556		1702			1808								
Blackboys, Gun Road	1604		1710			1816								
Uckfield, Bus Station arr	1617	1658	1723			1800	1829	1856		1956		2056		
Guaranteed connection														
Uckfield, Bus Station dep	1619	1703	1725			1807	1831	1901		2001		2101		
Rose Hill, Halfway House			1711			1815		1909		2009		2109		
Isfield Station	1629		1734			1840								
Hailsham, High Street		1614			1722									
Hailsham, Tesco		1616			1724									
Hailsham, Harebeating Lane		1619			1727									
Hellingly, Bulrush Lane		1623			1730									
Horsebridge, King's Head		1626			1733									
Laughton, Roebuck		1636			1743									
Ringmer, Broyle Estate		1643			1750				1934		2034		2134	
Ringmer, Olde Post Office Mews		1649			1756				1939		2039		2139	
Malling Hall, Church Lane	1637		1718	1742		1822	1848	1916		2016		2116		
Malling, Barn Road		1654			1800				1943		2043		2143	
Church Lane, Police HQ		1655			1801				1944		2044		2144	
Lewes Tesco		1658			1803				1946		2046		2146	
Lewes, School Hill arr	1641	1701	1722	1745	1805	1825	1850	1918	1948	2018	2048	2118	2148	
Lewes, School Hill dep	1643	1703	1724	1747	1807	1827	1852	1920	1950	2020	2050	2120	2150	2250
Lewes Prison	1650	1710	1731	1754	1814	1834	1858	1926	1956	2026	2056	2126	2156	2256
Kingston Ridge	1653	1713	1734	1757	1817	1837	1901	1929	1959	2028	2058	2128	2158	2258
Falmer, Station	1659	1719	1740	1803	1823	1842	1906	1934	2004	2033	2103	2133	2203	2303
Lewes Road, Coldean Lane A270	1702	1722	1743	1805	1825	1844	1908	1936	2006	2035	2105	2135	2205	2305
Brighton University, The Avenue	1705	1725	1746	1808	1828	1847	1911	1939	2009	2038	2108	2138	2208	2308
Lewes Road, Bus Garage	1709	1729	1750	1812	1832	1851	1915	1943	2013	2041	2111	2141	2211	2311
Brighton, Old Steine (H)	1719	1739	1800	1822	1842	1901	1925	1952	2021	2049	2119	2149	2219	2319
Brighton, Imperial Arcade (J)	1723	1743	1804	1826	1846	1904	1928	1955	2024	2052	2122	2152	2222	2322

Routes 28, 29 and 29A are limited stop between Sussex University and Churchill Square stopping only at BACA (28 & 29B only), Coldean Lane, Moulsecroomb Way, Brighton University, Lewes Road Bus Garage, Elm Grove, St Peters Church, Valley Gardens, Old Steine and North Street.

## Appendix D Useful Websites

- <http://www.cartogold.co.uk/eastsussextransport/map.htm>
- <http://www.sustrans.org.uk/>
- <http://www.traveline.info/>
- <https://liftshare.com/uk/community/eastsussexcarshare> ·  
<https://bikebudi.liftshare.com/>
- National Liftshare Week: annually in September – <http://liftshare.com/liftshareweek/>
- World Health Day: 7th April annually – World Health Organisation
- National Bike Week (including Bike2Work): Thursday 3rd September –  
<http://bikeweek.org.uk/>
- 'Walk to Work Week', 'Walk to School Week' and National Walking Month: annually  
(usually in April or May) – <http://www.livingstreets.org.uk/>