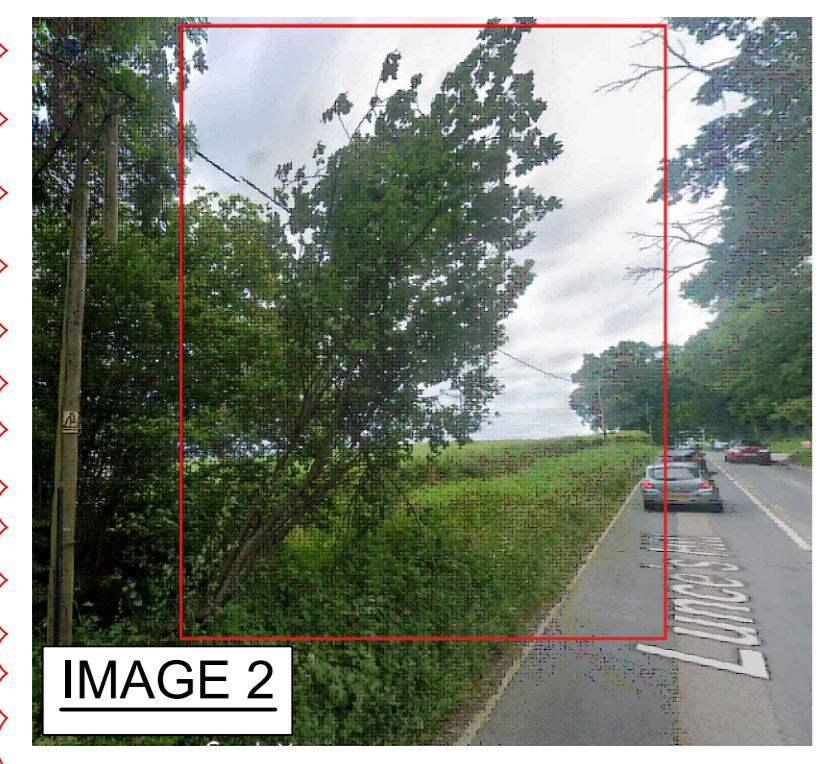


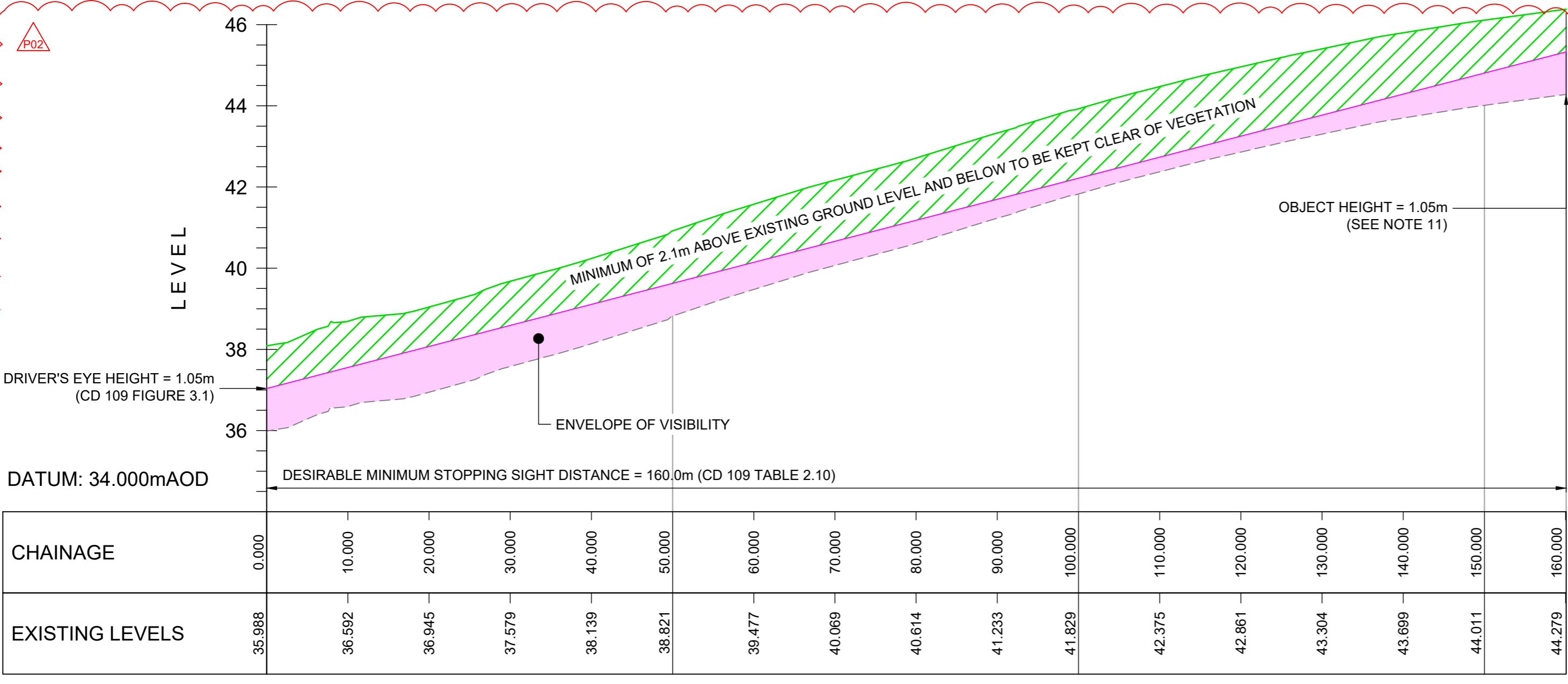
**LOCATION PLAN**  
 1:5000  
 0 10 20 30 40 50m  
 SCALE 1:500

- KEY:-**
- SITE BOUNDARY
  - HIGHWAY BOUNDARY
  - - - EAST SUSSEX / WEST SUSSEX COUNTY BORDER LINE
- SITE ACCESS**
- 85kph (50mph) SOUTHBOUND JUNCTION VISIBILITY SPLAY (x = 2.4m, y = 160m)
  - 48kph (30mph) SOUTHBOUND JUNCTION VISIBILITY SPLAY (x = 2.4m, y = 43m)
  - ▨ EXISTING VEGETATION TO BE CLEARED
  - ▨ PROPOSED TRAFFIC SIGNS
  - ▨ PROPOSED BUFF CORDUROY TACTILE PAVING
  - ▨ PROPOSED RED BLISTER TACTILE PAVING AT TOUCAN CROSSING
  - PROPOSED PRIMARY SIGNAL HEADS AT TOUCAN CROSSING
  - PROPOSED SECONDARY SIGNAL HEADS AT TOUCAN CROSSING
  - ▨ BUFF COLOURED BLISTER TACTILE PAVING AS PART OF INDICATIVE EXTENSION OF HIGHWAY CORRIDOR
  - ▨ BUFF COLOURED CORDUROY TACTILE PAVING AS PART OF INDICATIVE EXTENSION OF HIGHWAY CORRIDOR
- LONGITUDINAL SECTIONS**
- - - EXISTING GROUND
  - DESIRABLE MINIMUM JUNCTION VISIBILITY SPLAYS

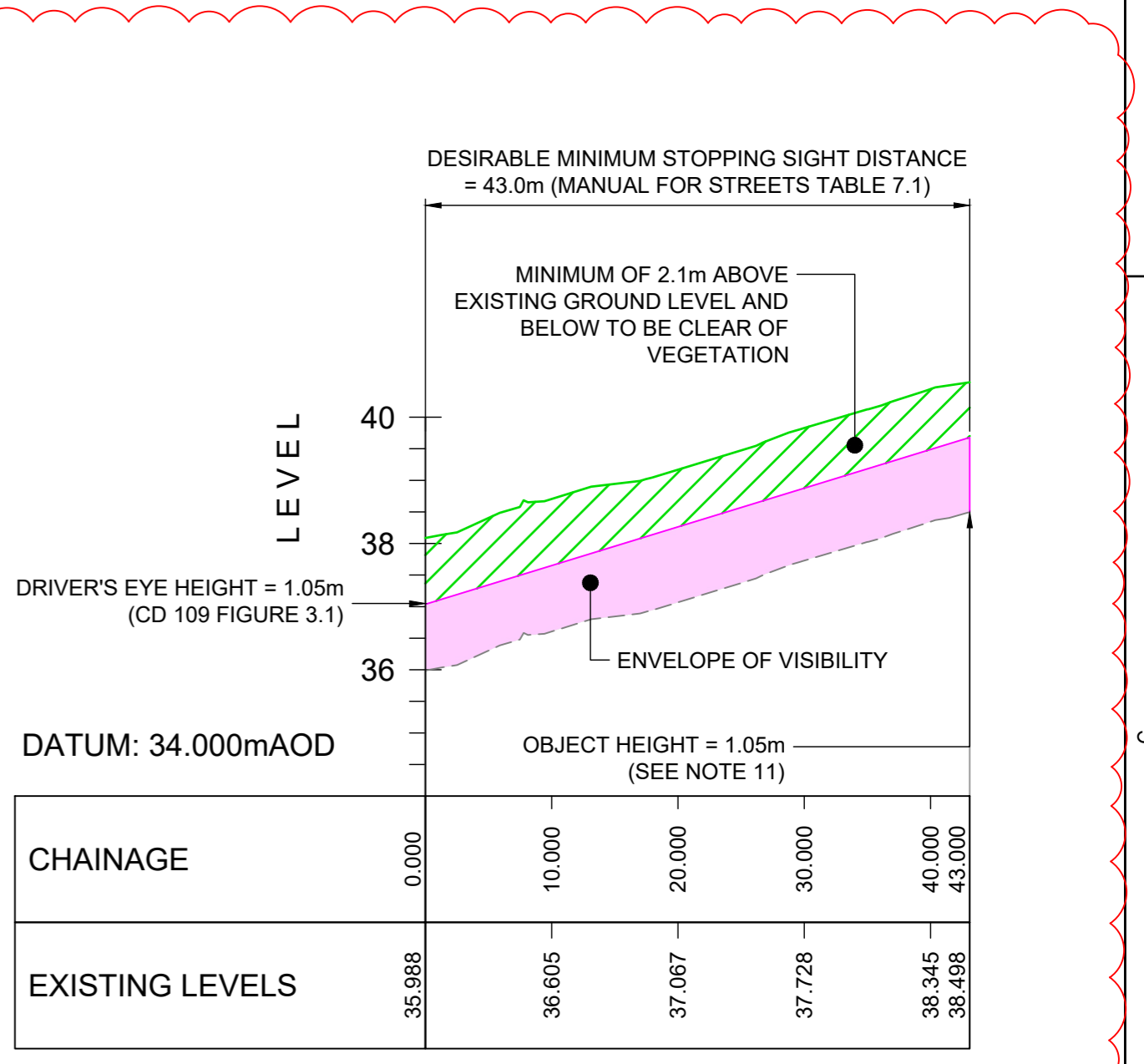
- NOTES:-**
1. THIS DRAWING IS TO BE READ IN CONJUNCTION WITH CATESBY ESTATES' VISION DOCUMENT, AS WELL AS ALL OTHER DESIGN DRAWINGS; IN PARTICULAR, STANTEC DRAWING '332611520-STN-HGN-XX-DR-C-0102'.
  2. JUNCTION VISIBILITY SPLAYS HAVE BEEN DRAWN IN ACCORDANCE WITH CD 109 AND MANUAL FOR STREETS TABLE 7.1.
  3. JUNCTION VISIBILITY SPLAYS HAVE BEEN DRAWN AS PER 85th PERCENTILE SPEEDS DERIVED FROM ATC DATA.
    - NORTHBOUND OBSERVED SPEED: 49mph
    - SOUTHBOUND OBSERVED SPEED: 38mph
  4. B2112 EXISTING SPEED: 60mph
  5. B2112 DESIGN SPEED: 85kph (50mph)
  6. JUNCTION POSITION HAS BEEN INFORMED BY MANUAL FOR STREETS AND CD 123.
  7. HIGHWAY BOUNDARY HAS BEEN INFERRED FROM PHYSICAL FEATURES RECORDED ON TOPOGRAPHICAL SURVEY.
  8. IN ORDER TO MAINTAIN VISIBILITY SIGHTLINES AT THE BELLMOUTH, ANY AND ALL VEGETATION IN FRONT OF PLOTTED JUNCTION VISIBILITY SPLAYS IS TO BE REGULARLY TRIMMED BACK AND OBSTRUCTIONS CLEARED/RELOCATED.
  9. IT IS UNCLEAR ON TOPOGRAPHICAL SURVEYS THE EXTENT OF TREE CANOPIES AND THEIR EFFECT ON JUNCTION VISIBILITY UP LUNCES HILL. FURTHER SURVEYS MAY BE REQUIRED ON CANOPY HEIGHTS AND EXTENT TO MORE ACCURATELY DETERMINE THE AMOUNT OF VEGETATION / SMALL BRANCH CLEARANCE WHICH IS REQUIRED, IN ORDER TO MAINTAIN JUNCTION VISIBILITY SIGHTLINES.
  10. VERTICAL JUNCTION VISIBILITY HAS BEEN PLOTTED IN ACCORDANCE WITH SECTION 3 'SIGHT DISTANCE' OF CD 109.
  11. AN OBJECT HEIGHT OF 1.05m HAS BEEN PLOTTED TO ASSESS VISIBILITY FOR VEHICLES AT THE GIVE WAY LINE TO INCOMING VEHICLES PROCEEDING INTO HAYWARDS HEATH FROM LUNCES HILL.



**MAIN PLAN**  
 1:500



**JUNCTION VISIBILITY SOUTH 85KPH DESIGN SPEED**  
 SCALE: H 1:500, V 1:100, 5x VERTICAL EXAGGERATION



**JUNCTION VISIBILITY SOUTH 48KPH DESIGN SPEED**  
 SCALE: H 1:500, V 1:100, 5x VERTICAL EXAGGERATION

Client/Project:  
**Catesby Estates**  
 LAND AT LUNCES HILL,  
 HAYWARDS HEATH

Project No.: 332611520

Scale: 1:500 @ A1

Revision: P02

Drawing No. 332611520-SHN-HGN-XX-DR-C-0105

**PLANNING**

The document is suitable only for the purpose noted above. Use of this document for any other purpose is not permitted.

Issue/Revision	By	Appd	YYYY.MM.DD
P02 VEGETATION CLEARANCE INFORMATION ADDED	BB	JSH	2024.02.02
P01 FIRST ISSUE	BB	DL	2025.12.02

**NOTES:**

UTILITIES NOTE: The position of any existing public or private sewers, utility services, plant or apparatus shown on this drawing is for information only. It is not intended to be used for design or construction purposes. Other such plant or apparatus may also be present but not shown. The Contractor is therefore advised to undertake their own surveys, plant or apparatus may affect their operations.

**Stantec**  
 Stantec UK Limited  
 NORTHAMPTON  
 11 Prospect Court, Courteenhall Road, Blisworth,  
 Northampton NN7 3DG  
 Tel: +44 1604 878 300  
 www.stantec.com/uk