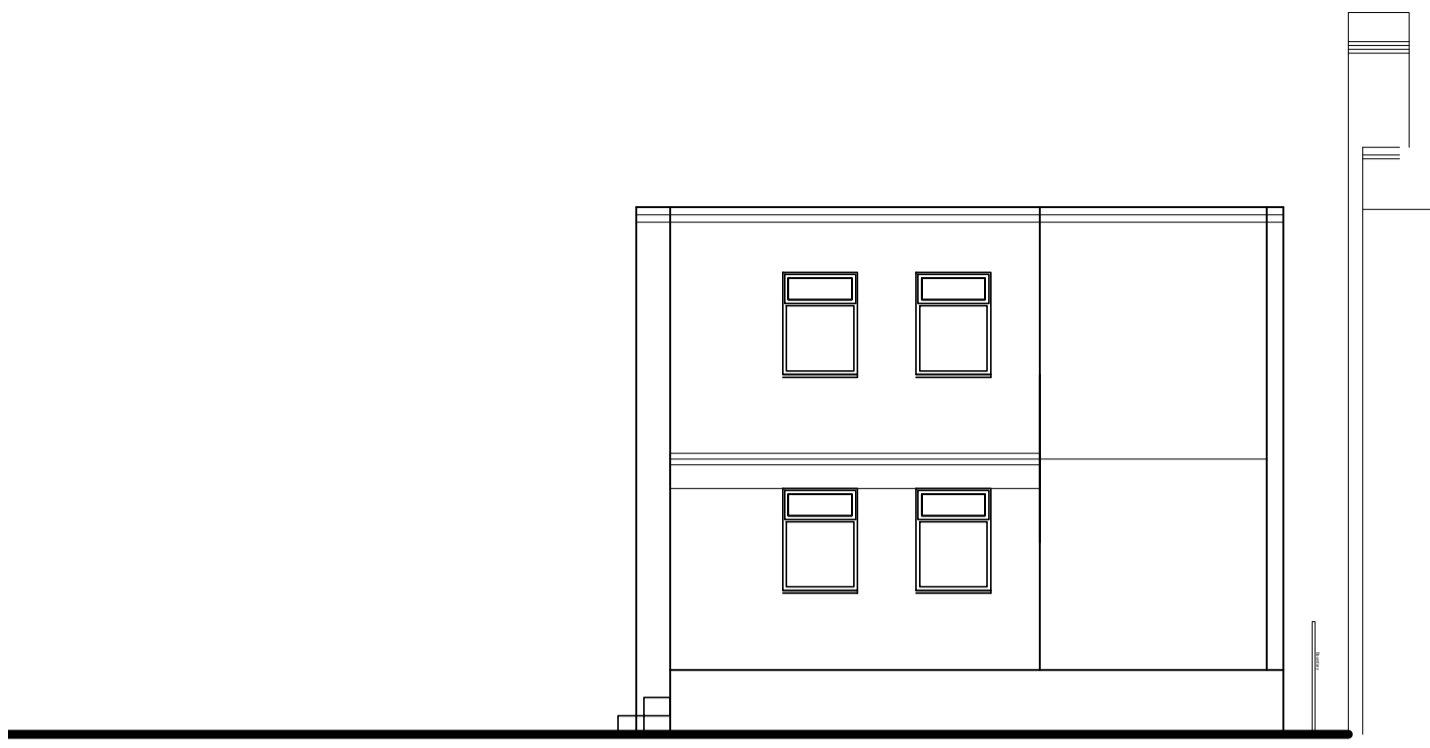
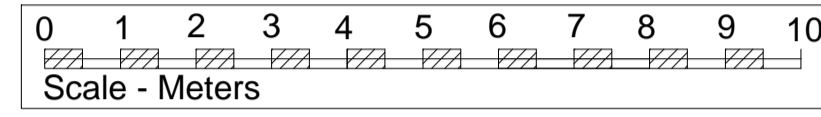


Elevation to Victoria Way - North

Previous

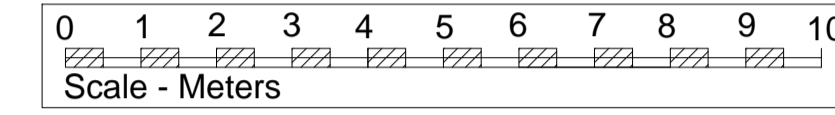


Elevation to West

Previous

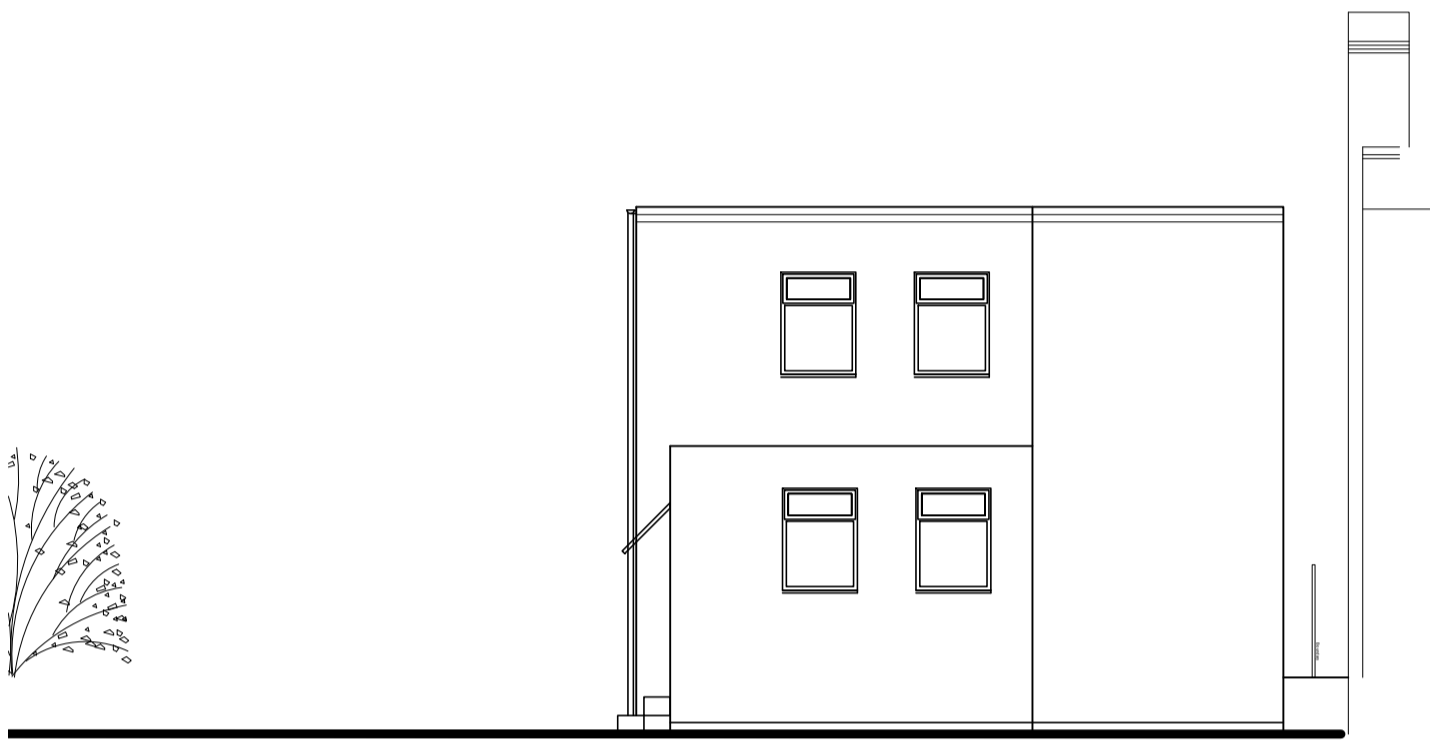


Elevation to London Road - East



Elevation to Victoria Way - North

As Exists



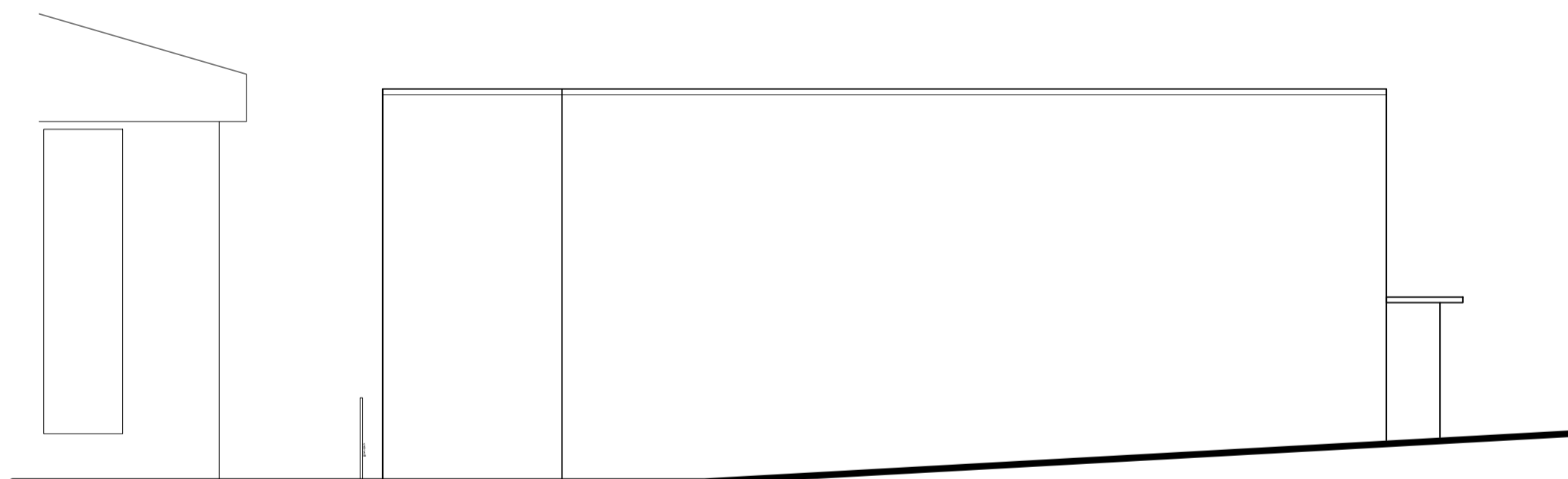
Elevation to West

As Exists



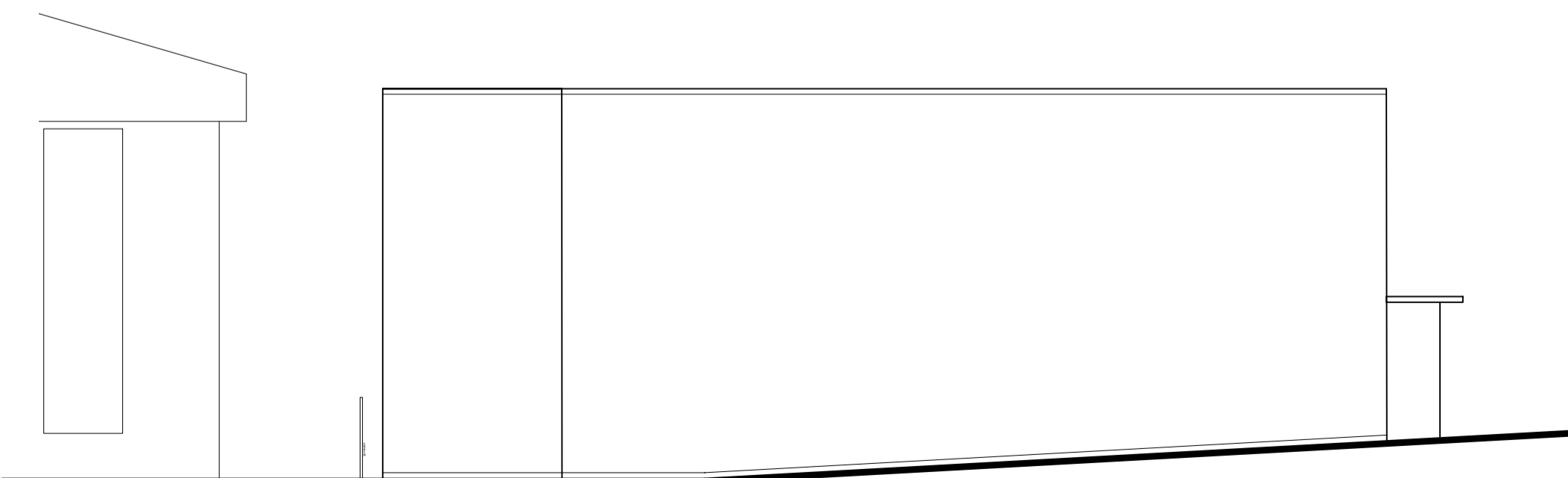
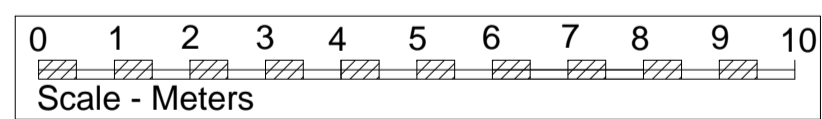
Elevation to London Road - East

Elevations @ 1.100



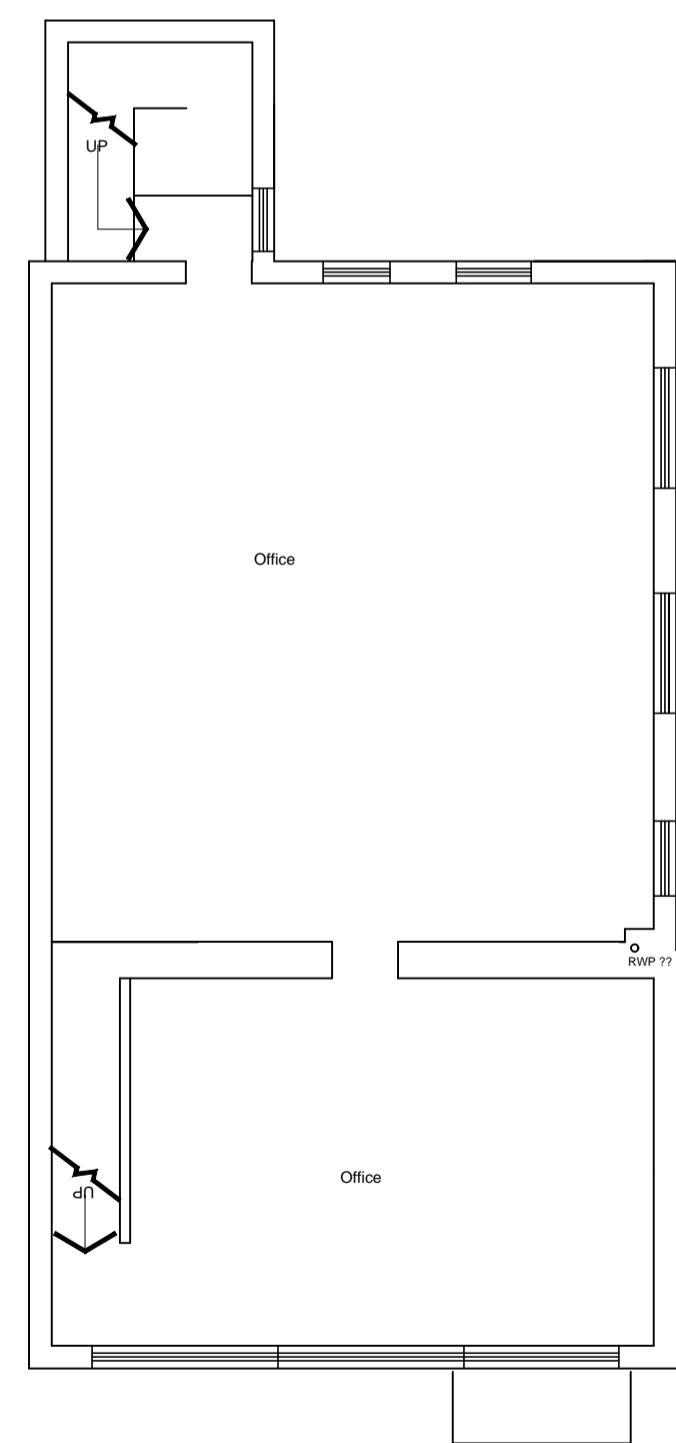
Rear Elevation - South

Previous

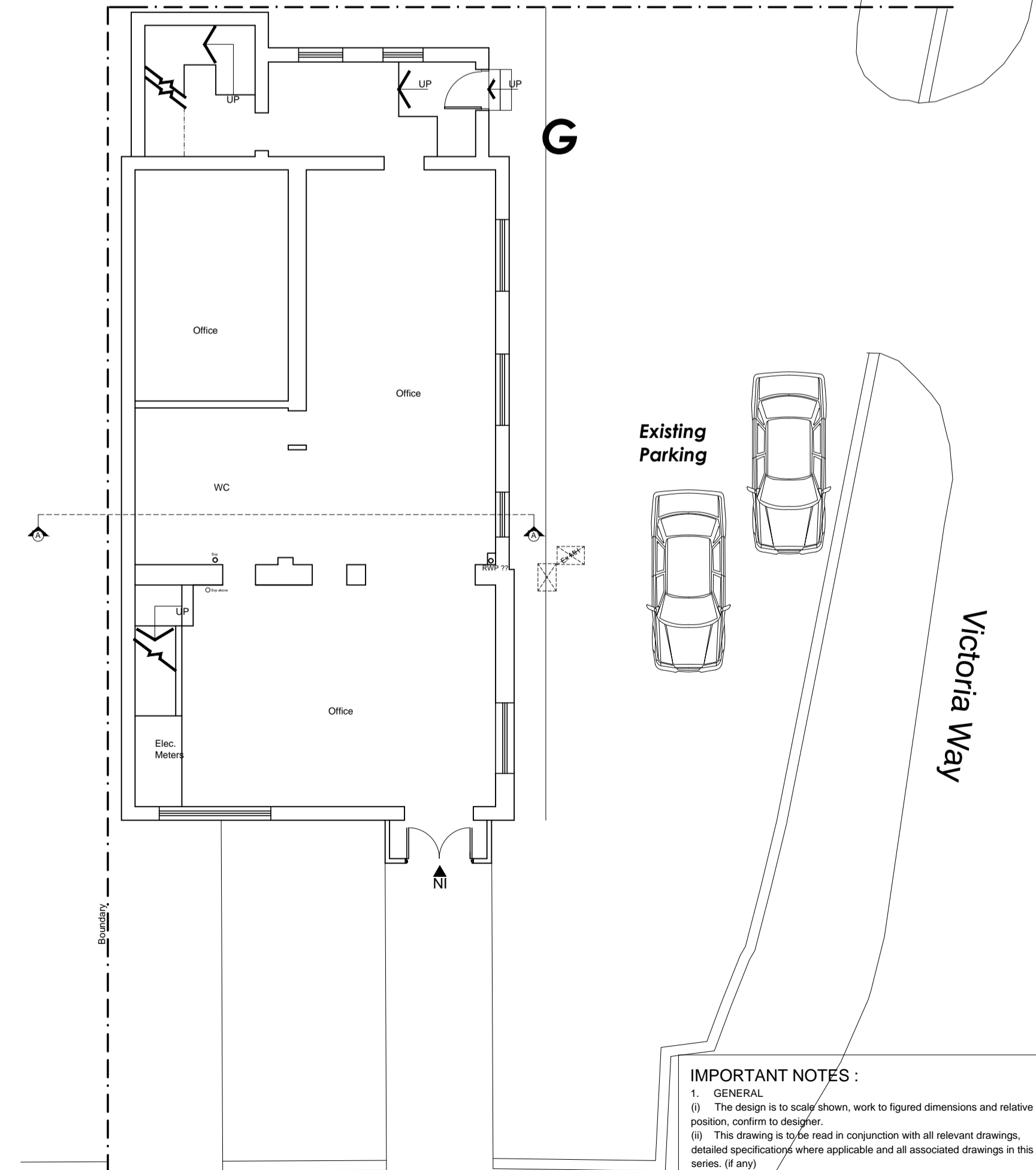
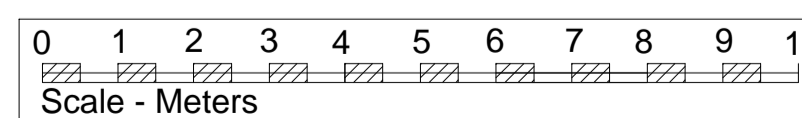


Rear Elevation - South

As Exists



Previous plans @ 1.100



IMPORTANT NOTES :
 1. GENERAL
 (i) The design is to scale shown, work to figured dimensions and relative position, confirm to designer.
 (ii) This drawing is to be read in conjunction with all relevant drawings, detailed specifications where applicable and all associated drawings in this series. (if any)
 (iii) Any discrepancy on this drawing is to be reported immediately to the partnership for clarification.
 (iv) The contractor is responsible for all temporary works and for the stability of the works in progress.

Previous Plans added	26/1/26			A
Revision	Date	By	Rev. No.	
Client				
Project	273 London Road, B Hill Conversion to 6 studios			
Title	Elevations & Previous Plans			

CLIVE HAWKINS
 ARCHITECTS LTD
 DESIGN@CLIVEHAWKINSONLINE.COM Tel: 01273 245249

Date	Scale	Project No.	Dwg No.	Rev. No.
Jan 26	1:100 @ A1	1036	22	A