

# 06 | Design Precedents

## 6.1 Design Precedents

For inspiration, we looked at Eco-homes and buildings designed in and around the South Downs National Park.

By doing so, we aim to ensure that the designs we produce adhere to the same principles as those already approved and echo the objectives of the South Downs National Park Authority Design Guide.

A number of precedents on this page were nominated for awards. We utilised this opportunity to examine the proposed materials for the design based on the material used in the precedents.



Skyhouse - The House Designers - South Downs (Architects website)



Amberley - Snug Architects - South Downs (Snug Architects website)



The Weald & Downland Living Museum - South Downs



Twineham Grange Farm - Unknown - South Downs National Park (Sussex World)



Dover House MH Architects - South Downs National Park (MW Architects website)



Lane End House PAD Studio - South Downs National Park (PAD Studio website)



South Downs Sitooterie MW Architects - South Downs National Park (MW Architects website)



## Proposed Scheme



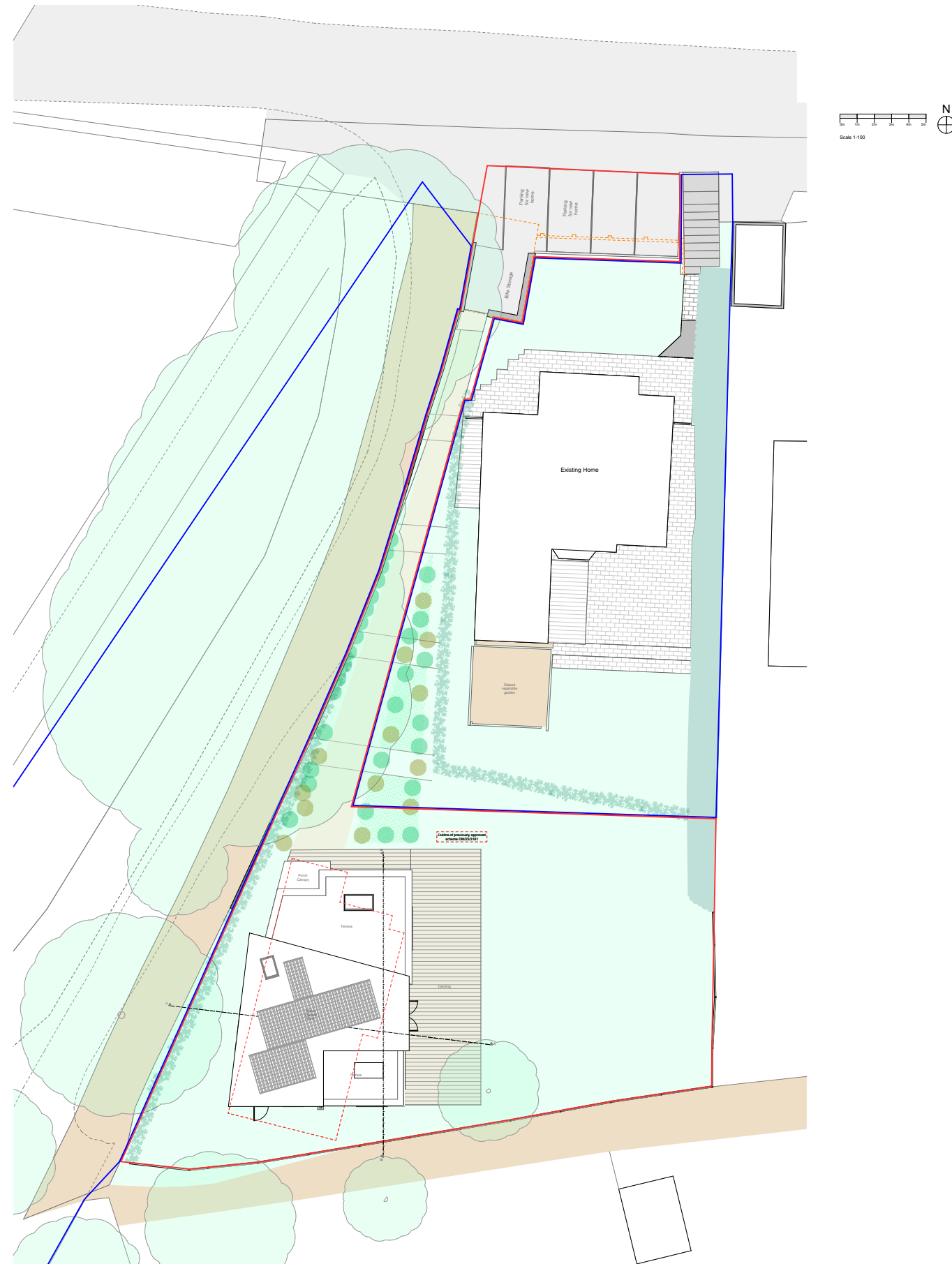
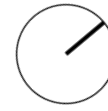
7.1 Proposed Location Plan



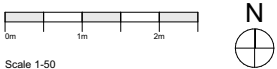
Proposed Location Plan 1-1250

Proposed Block Plan 1-500

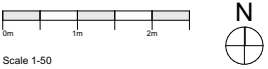
## 7.2 Proposed Site plan



7.3 Proposed Ground Floor Plan



7.3 Proposed First Floor Plan

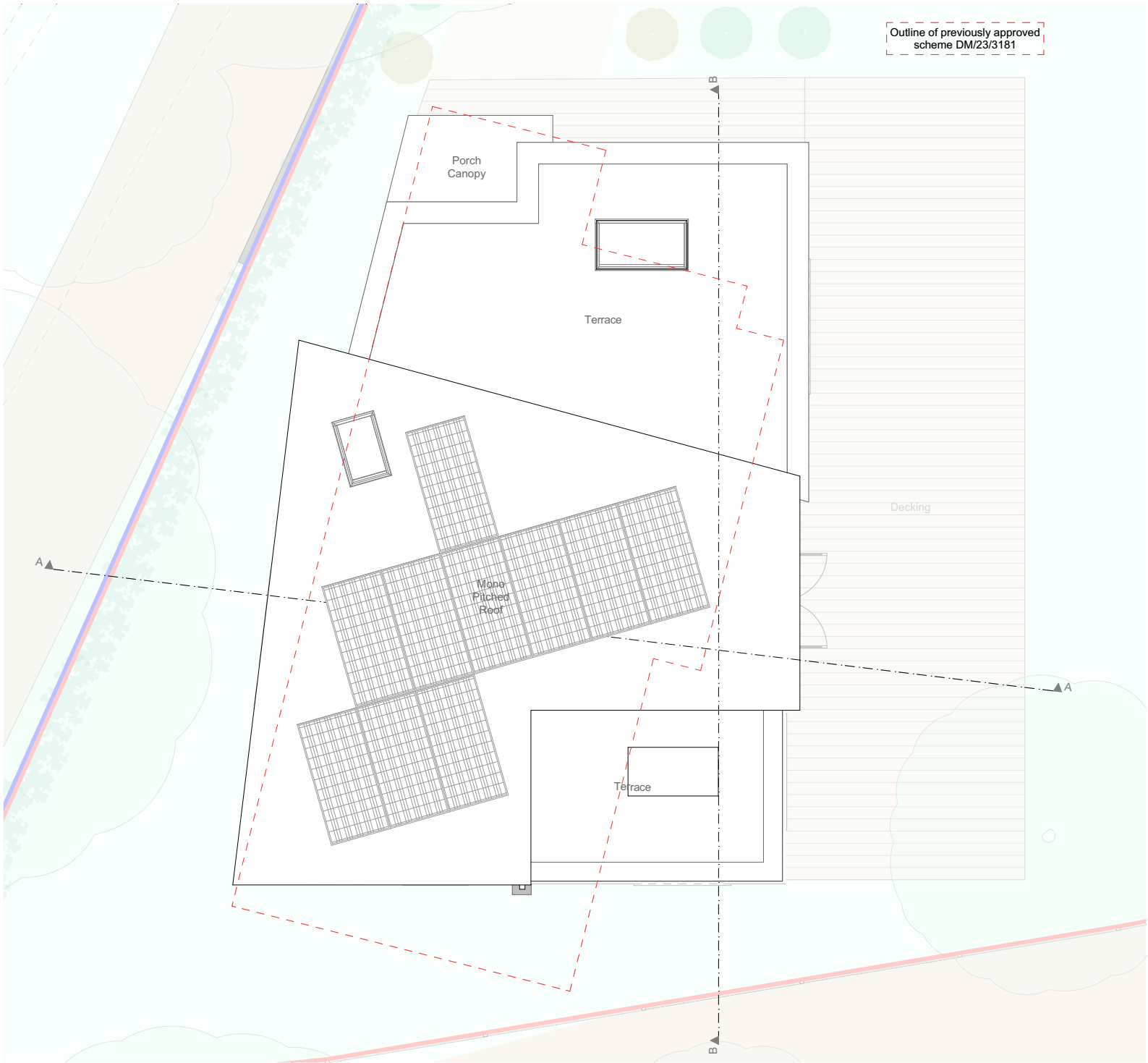
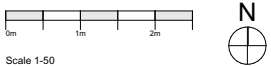


Outline of previously approved  
scheme DM/23/3181

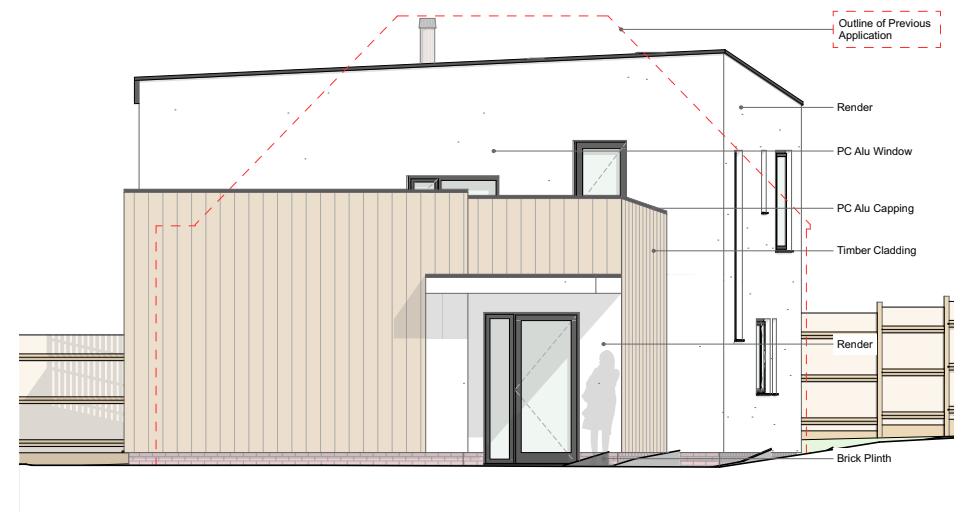
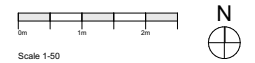


Proposed First Floor

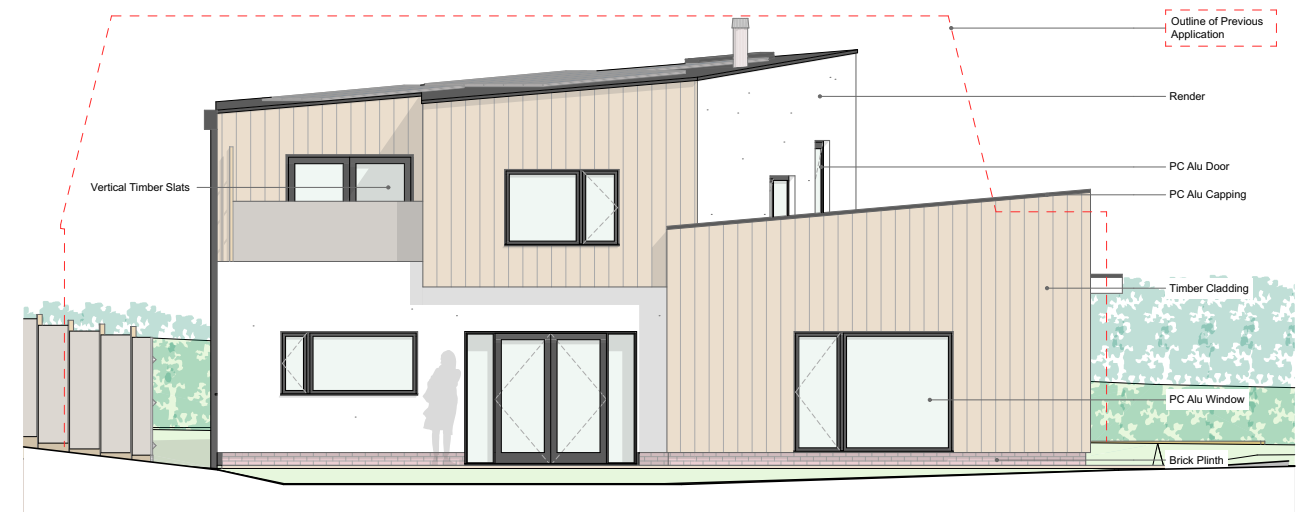
7.3 Proposed Roof Plan



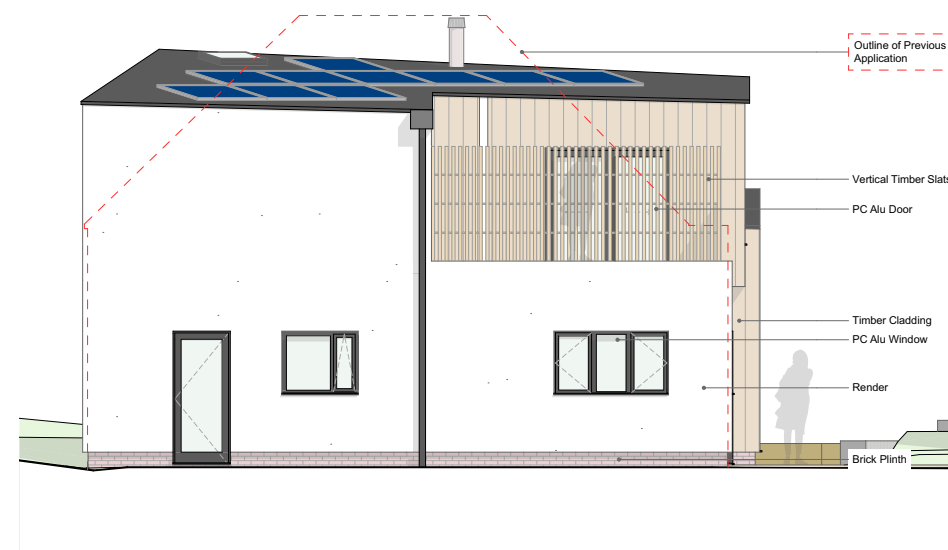
## 7.4 Proposed Elevations



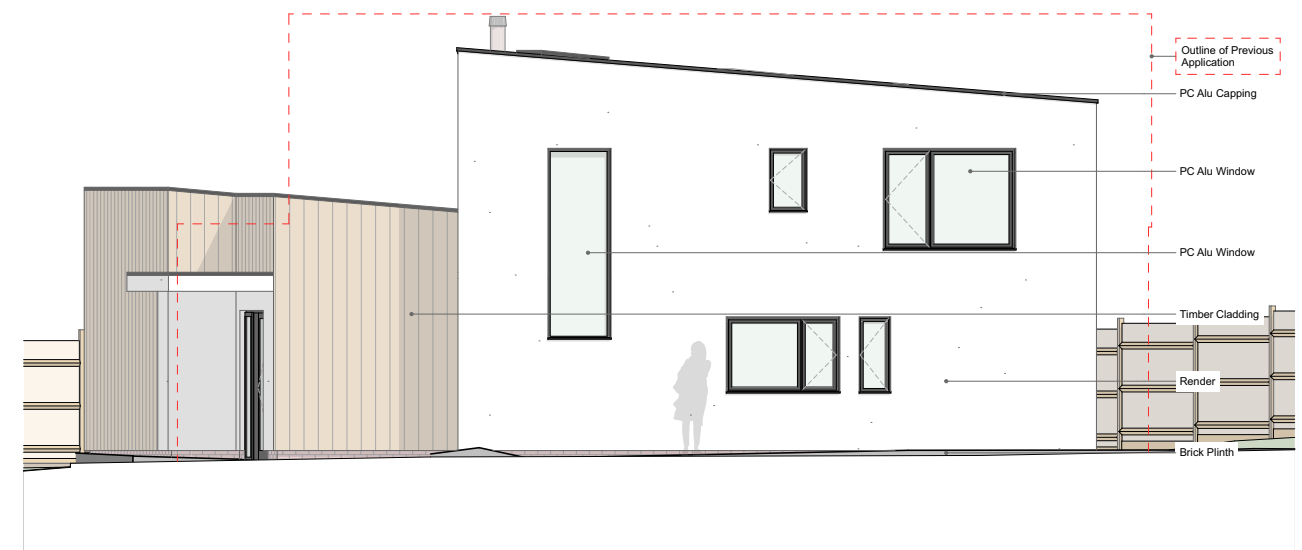
North Elevation



East Elevation



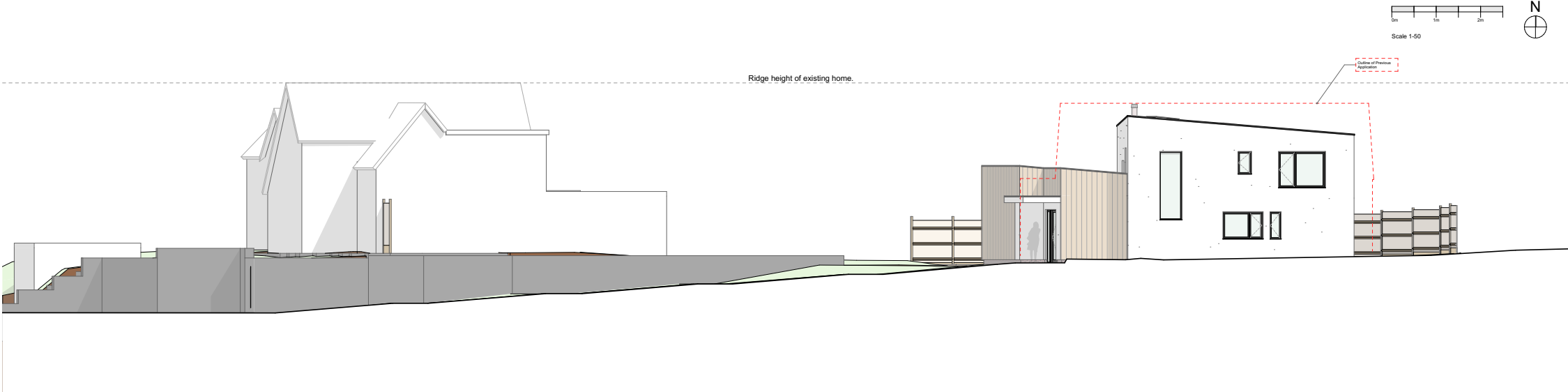
South Elevation



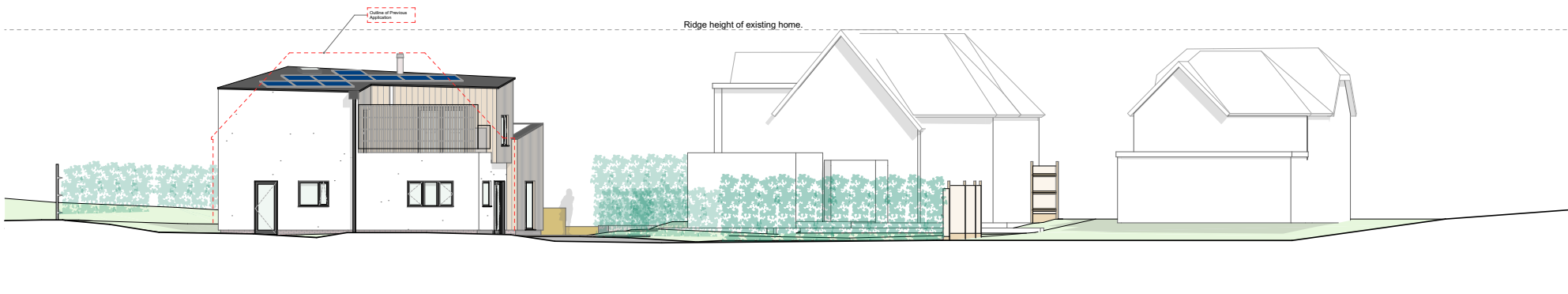
West Elevation



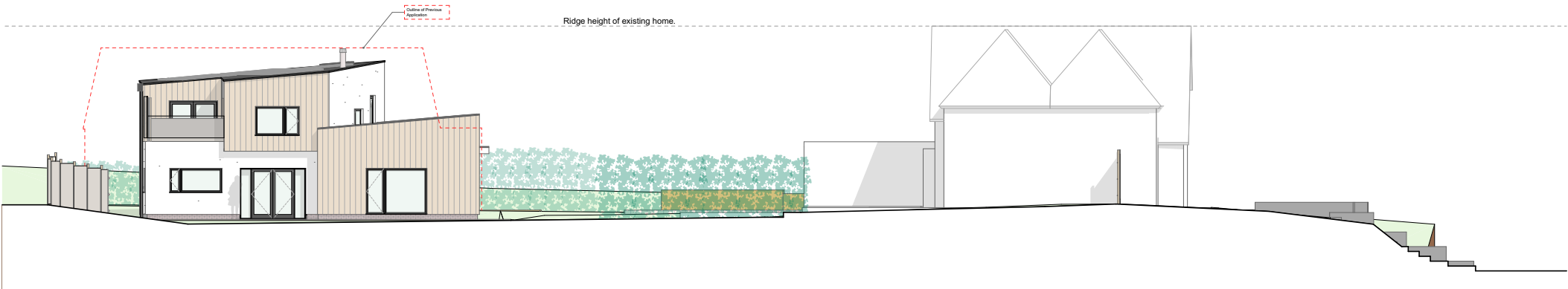
7.4 Proposed Elevations



Contextual West Elevation



Contextual South Elevation



Contextual East Elevation