

DETAIL No. 8 - RODDING EYE (RE)

LAYING COURSE

RECOMMENDED BS EN 13242 AGGREGATE GRADING (mm)	2/6.3
RECOMMENDED BS EN 13242 AGGREGATE GRADING/TOLERANCE CATEGORY	Gc80/20 Gtc20/15

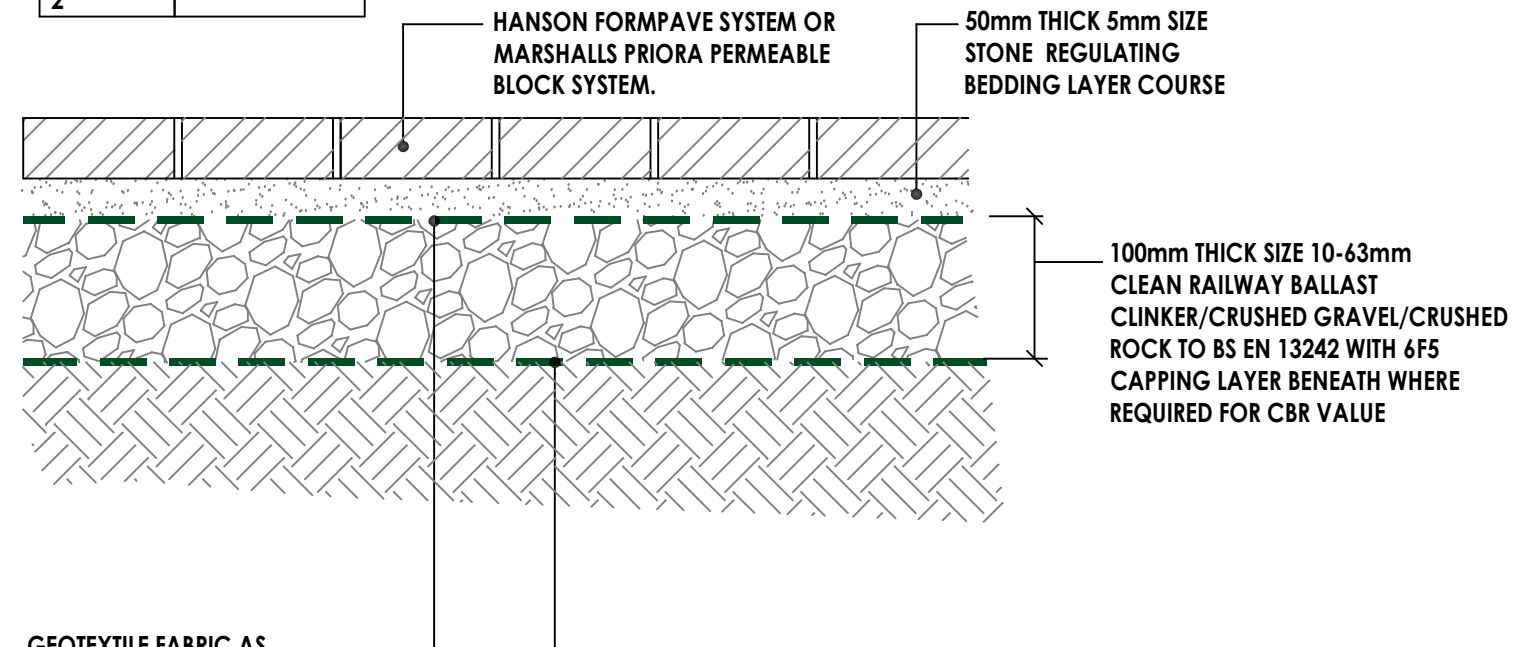
SIEVE SIZE (mm)	PERCENTAGE BY MASS PASSING ISO 565 SIEVE
31.5	100
20	
14	80 TO 99
10	20 TO 70 (+15) 0 TO 20
6.3	
4	
3.15	
2.8	0 TO 5
2	

SUB BASE MATERIAL

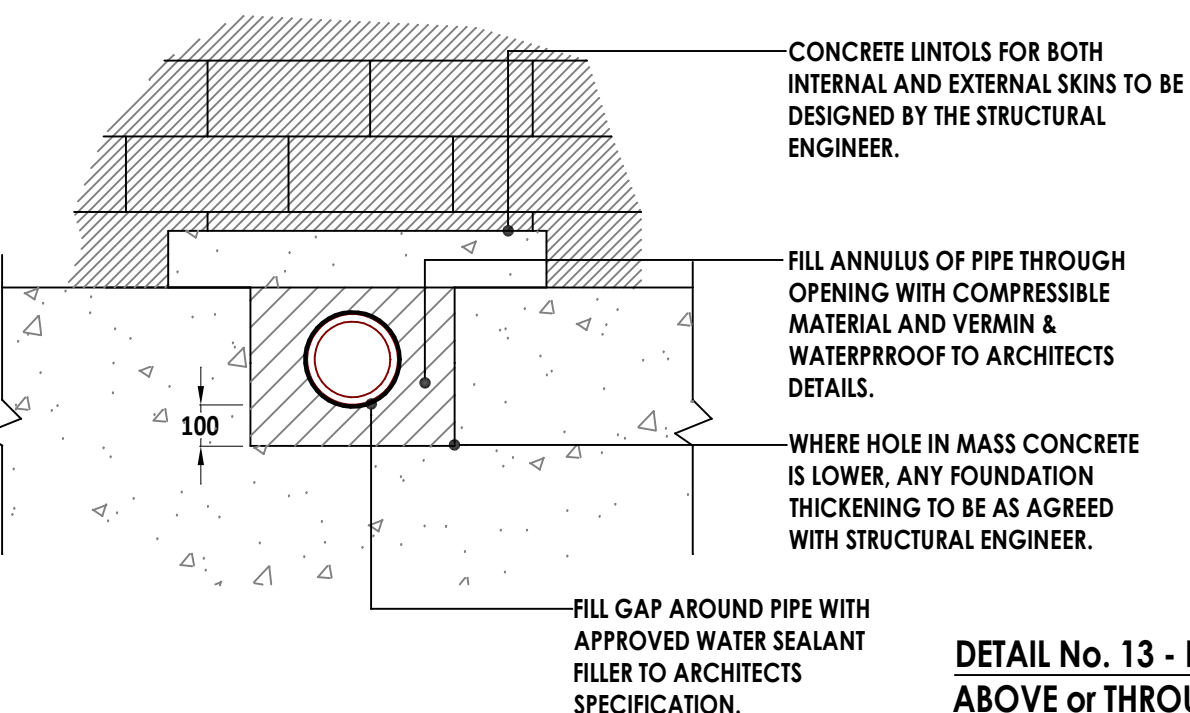
RECOMMENDED BS EN 13242 AGGREGATE GRADING (mm)	10/20
RECOMMENDED BS EN 13242 AGGREGATE GRADING/TOLERANCE CATEGORY	Gc80/20 Gtc20/15

SIEVE SIZE (mm)	PERCENTAGE BY MASS PASSING ISO 565 SIEVE
31.5	98 TO 100
20	80 TO 99
14	20 TO 70 (+15) 0 TO 20
10	
6.3	0 TO 20
4	
3.15	
2.8	
2	2

--- GEOTEXTILE AS ALDERBURGH'S 'GEOTEX 225'



DETAIL No. 11 - PERMEABLE FOOTPATH  
AROUND HOUSES



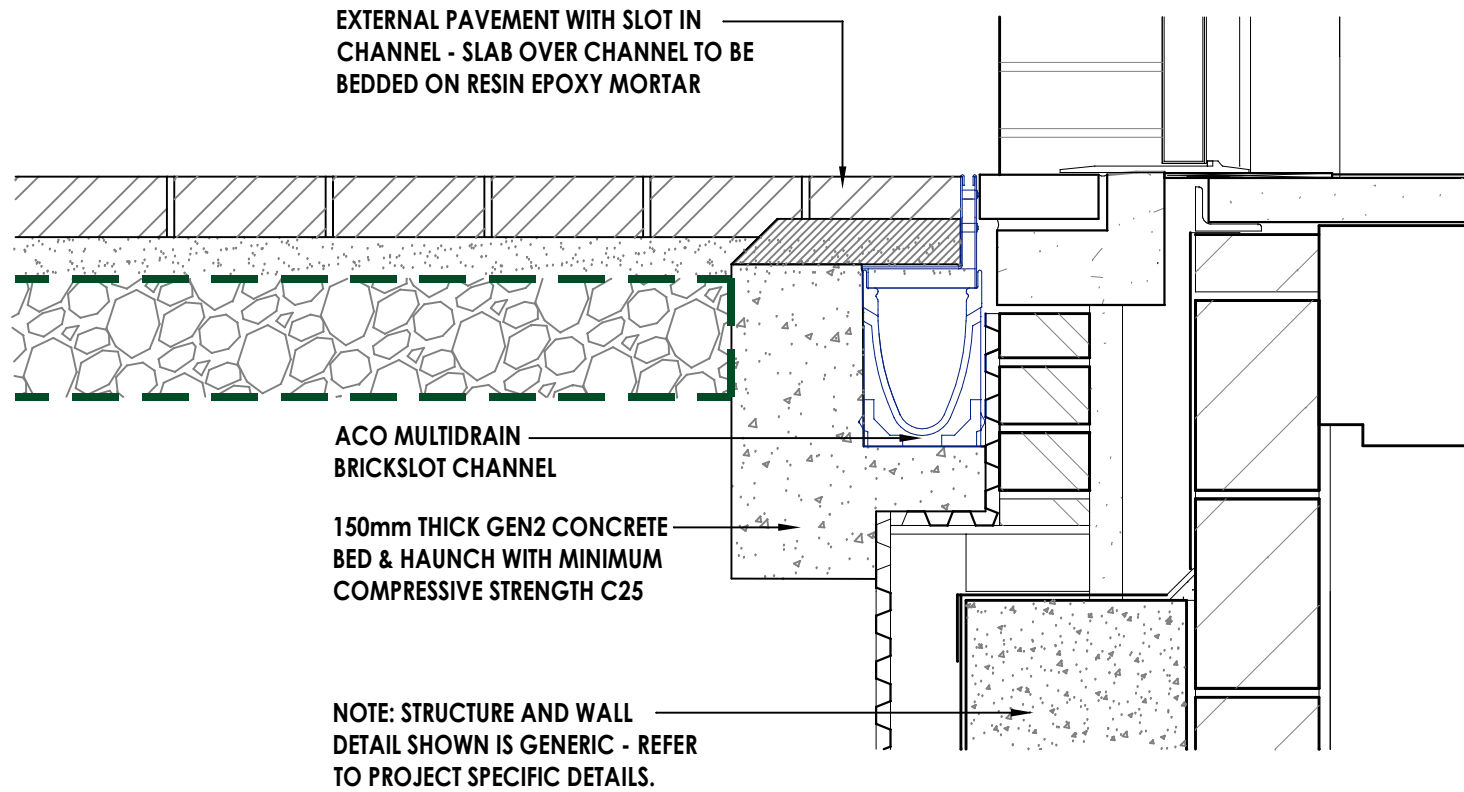
DETAIL No. 13 - DRAINAGE PASSING  
ABOVE or THROUGH GROUND BEAM

1.0 BLOCK PAVEMENTS: THE CHANNEL MUST BE SUPPORTED Laterally and therefore blocks must be restrained from movement by bedding securely, e.g. by using an Epoxy or Polymer Modified Mortar for bed and perpendicular joints. (for example RONAFIX Mortar Mix C or similar: From Ronacrete Tel 01279 638700). Engineering advice may be required.

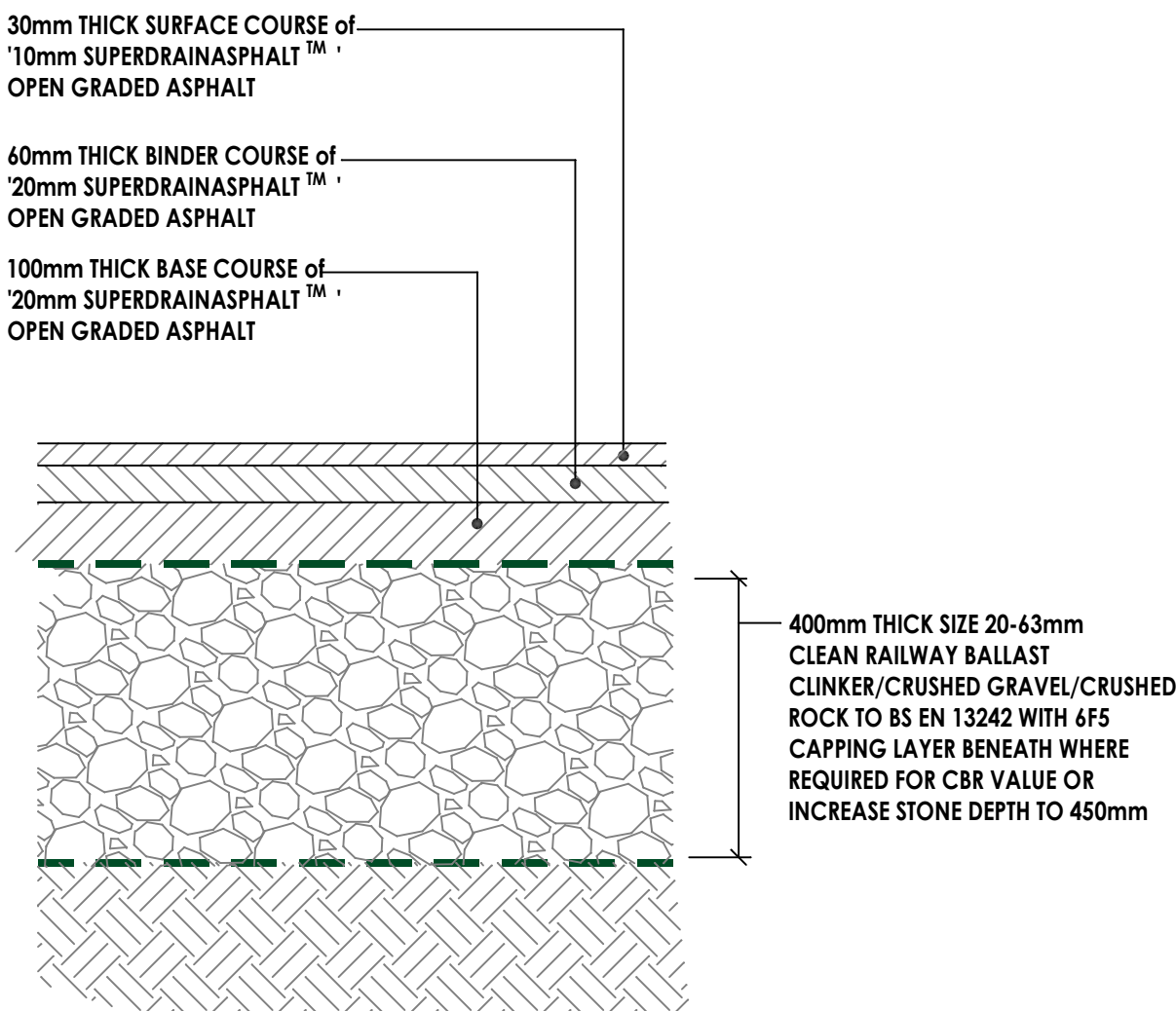
2.0 JOINT SEALANT: Where ACO Drain channels are to be installed with watertight joints, e.g. where used in foul water or chemical applications, use a suitable proprietary sealant such as Sikaflex 11FC or Degussa Masterflex 472 (or consult a specialist sealant manufacturer on sealant type and application). The sealant shall be applied to the end face of the channel units. Guidance on the surface preparation and priming of the units shall be sought from the sealant manufacturer, noting that the preparation of an ACO Polymer Concrete surface is likely to be the same as the requirement for cement concrete.

3.0 GENERAL INSTALLATION NOTES: See drawing E1-E01-003-3 for general notes on installation. Note that the number of expansion joints will be required. (See also Note 1.0)

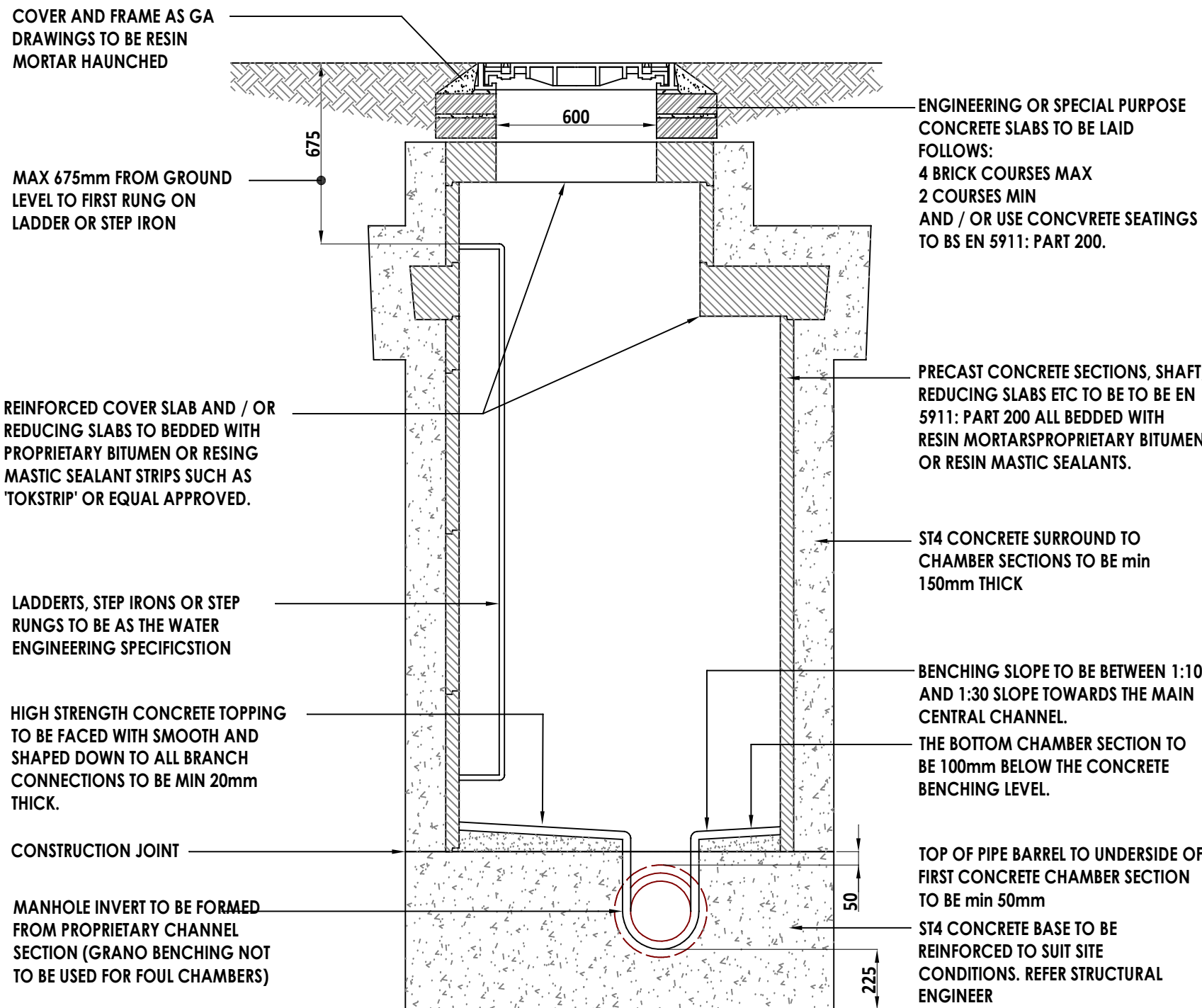
5.0 Slot Height is 105mm to suit maximum block height of 100mm.



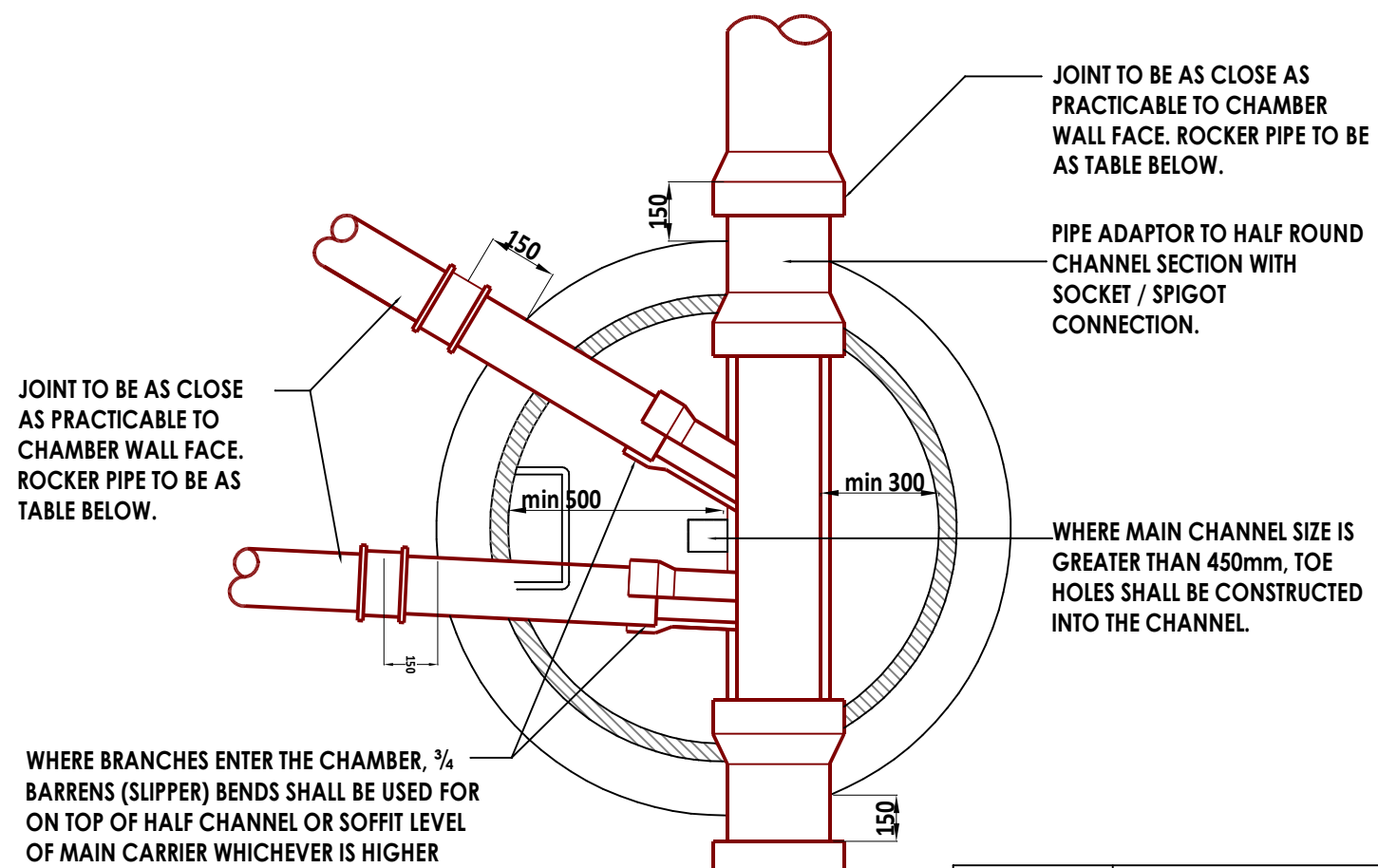
DETAIL No. 9 - DRAINAGE CHANNEL  
AT THRESHOLD



DETAIL No. 12 - PERMEABLE ROADWAY  
CONSTRUCTION



SECTION A-A



Pipe dia	Rocker pipe length
150 - 450	500 - 750mm
451 - 750	750 - 1000mm
>750	Refer to engineer

PLAN

DETAIL No. 10 - PCC CIRCULAR MANHOLE  
DETAIL & BRANCHES - (SCALE 1:20)

P3	Detail no. 12 altered to suit additional depth needed for extra houses. Detail no. 10 altered to new PC ring	22.08.2025	SAD
P2	PLANNING ISSUE	11.12.2019	SAD
P1	PRELIMINARY ISSUE	24.10.2019	SAD
Rev	Description	Date	By

CLIENT:

Mrs K Safronova

PROJECT:

201 Junction Road Burgess Hill  
West Sussex RH15 0NU

TITLE:

Drainage Details  
Sheet 2 of 3

SCALE:  
GA 1:10 @ A1  
GA 1:20 @ A3

DRAWING STATUS:  
FOR PLANNING

JOB No:  
1593

DWG No & Rev:  
201 P3

SIMON DENT ASSOCIATES

Public Health, Civil and Water Consulting Engineers



14 Sullington Way  
Shoreham-By-sea  
West Sussex BN43 6PJ

simondent@live.co.uk  
0754 658 3150