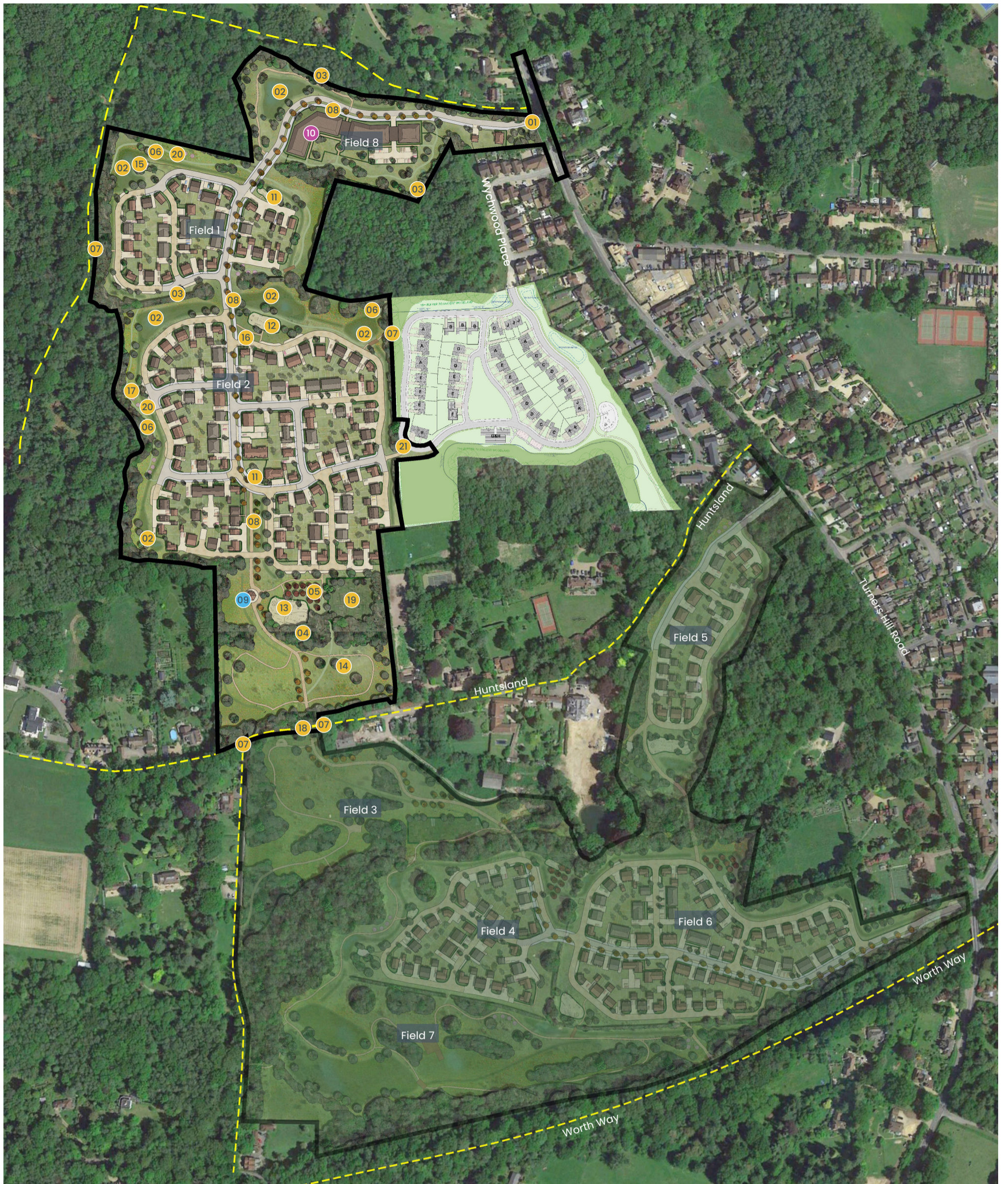


APPENDIX A – SITE ILLUSTRATIVE MASTERPLAN



- Application site
- 01 Vehicular/pedestrian and cycle access point
- 02 Sustainable drainage system including swales
- 03 Retained and enhanced vegetation
- 04 Tree belt planting
- 05 Community orchard/garden

- 06 Meadow planting and species-rich landscapes
- 07 Pedestrian connection points
- 08 Shared cycle/footpath
- 09 Community heart including gathering space/band stand area and St Leonards lookout
- 10 Up to 70 bed care home

- 11 Local Area for Play
- 12 Local Equipped Area for Play
- 13 Neighbourhood Equipped Area for Play
- 14 Countryside open space
- 15 Pumping station
- 16 Substation
- 17 Mown paths

- 18 Cycle and pedestrian connection point
- 19 Community allotments
- 20 Play on the way
- 21 Emergency, cycle and pedestrian connection point
- Public right of way: Footpath



Not to scale

CLIENT: WATES DEVELOPMENTS

PROJECT: LAND WEST OF CRAWLEY DOWN

DRAWING: ILLUSTRATIVE MASTERPLAN NORTH & HURST FARM

PROJECT NUMBER: 1314

DRAWING NUMBER: SK001-08

REVISION: V5

DATE: 17.02.2026

APPENDIX B – SITE TOPOGRAPHICAL SURVEYS