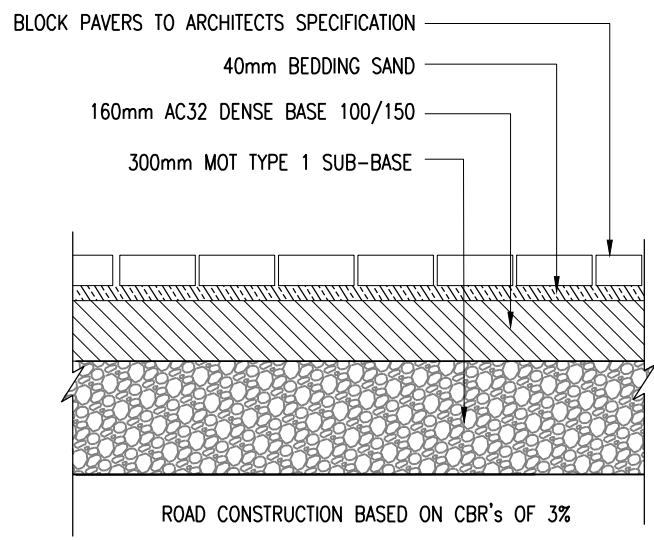
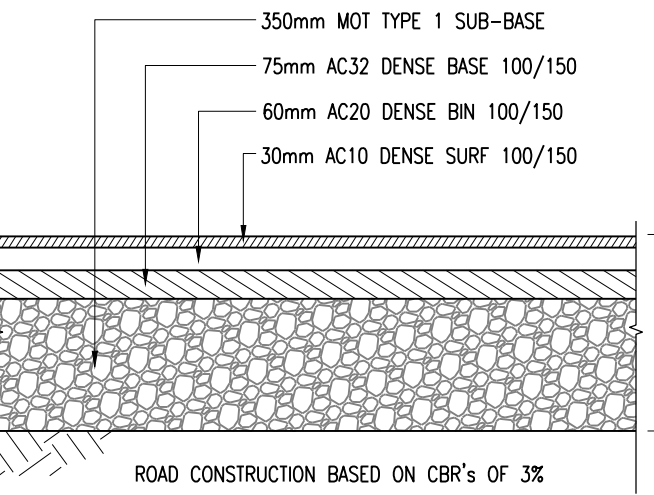


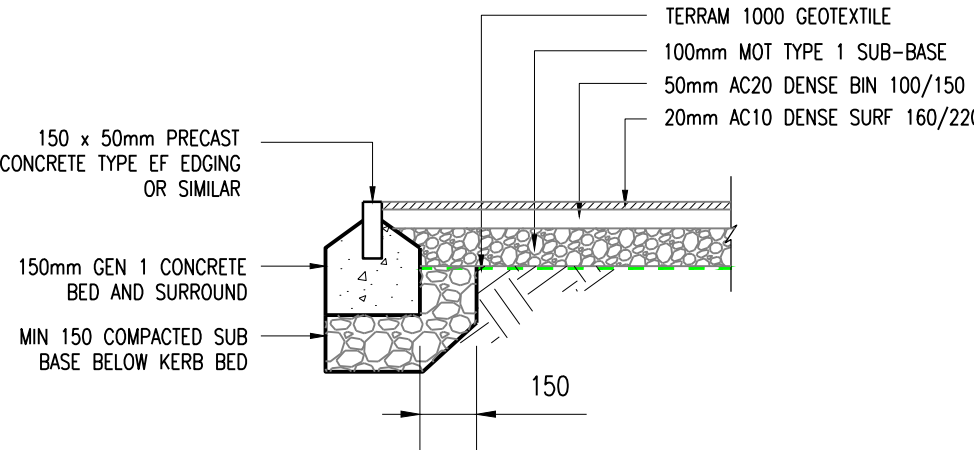
1. GENERAL
- (i) This drawing is not to be scaled, work to figured dimensions only, confirmed on site.
- (ii) This drawing is to be read in conjunction with all relevant architectural drawings, detailed specifications where applicable and all associated drawings in this series.
- (iii) Any discrepancy on this drawing is to be reported immediately to the partnership for clarification.
- (iv) The contractor is responsible for all temporary works and for the stability of the works in progress.



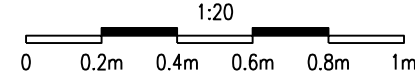
TRAFFICKED BLOCK PAVING – FULL DEPTH CONSTRUCTION.
(1:20)



IMPERMEABLE TRAFFICKED ASPHALT
(1:20)



IMPERMEABLE PEDESTRIAN ASPHALT
(1:20)



ISSUED FOR BUILDING REGULATIONS	TRB AK	17.06.20	P1
Description	By	Agreed	Date

ISSUED FOR BUILDING REGULATIONS

Title

STANDARD DETAILS

Project

FORMER SWIMMING POOL AND SQUASH COURT TO TYLER HOUSE

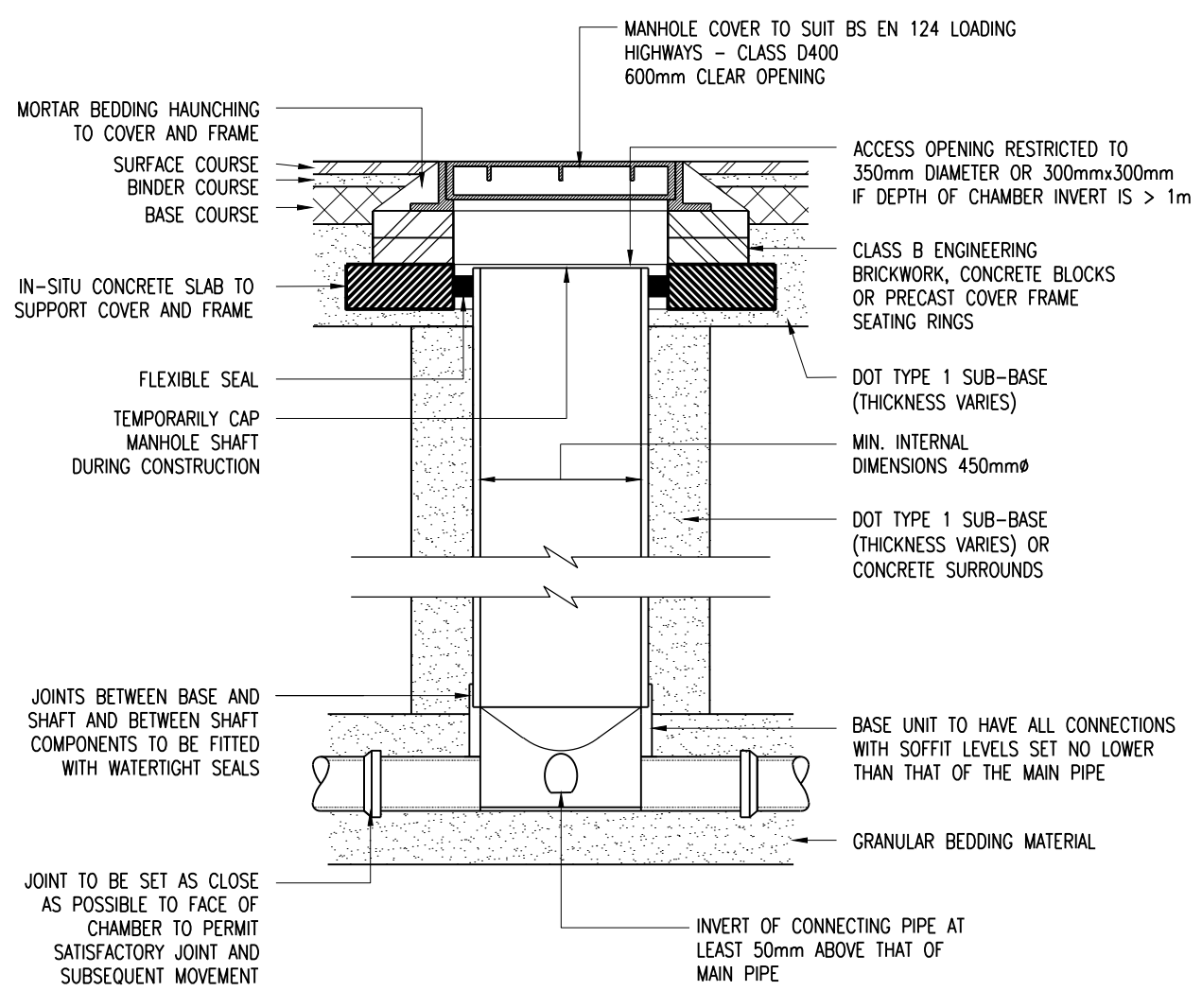
Client

DUKE HARVEY

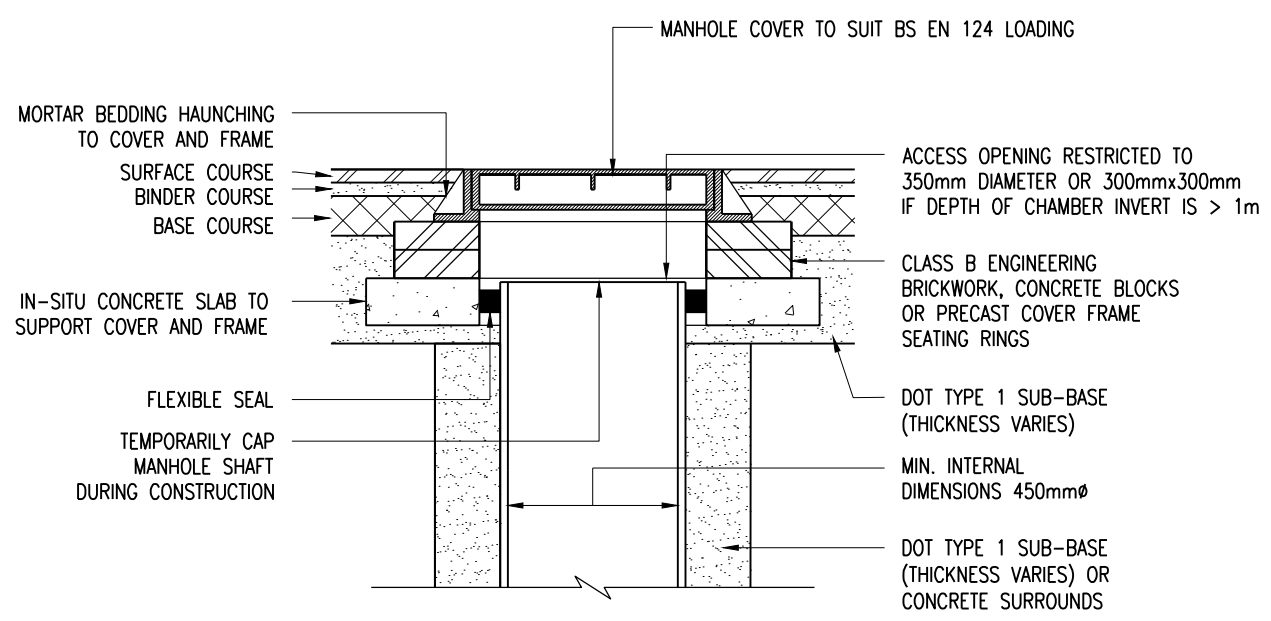
HOP

CONSULTING CIVIL AND STRUCTURAL ENGINEERS

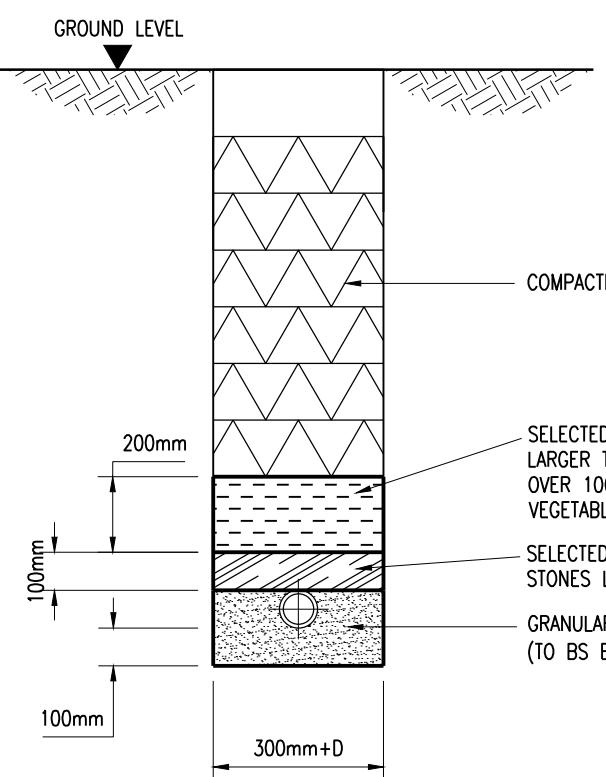
HOP House, 41 Church Road Hove, East Sussex BN3 2BE
www.hop.uk.com
ask@hop.uk.com
+44 (0)1273 223900



TYPE 3 ACCESS CHAMBER – FLEXIBLE MATERIAL.
(SUBJECT TO VEHICLE LOADING, MAX. DEPTH 3m, NON-ENTRY)
(1:20)



TYPE 3 ACCESS CHAMBER – TRAFFICKED COVER DETAIL
(SUBJECT TO VEHICLE LOADING, MAX. DEPTH 3m, NON-ENTRY)
(1:20)

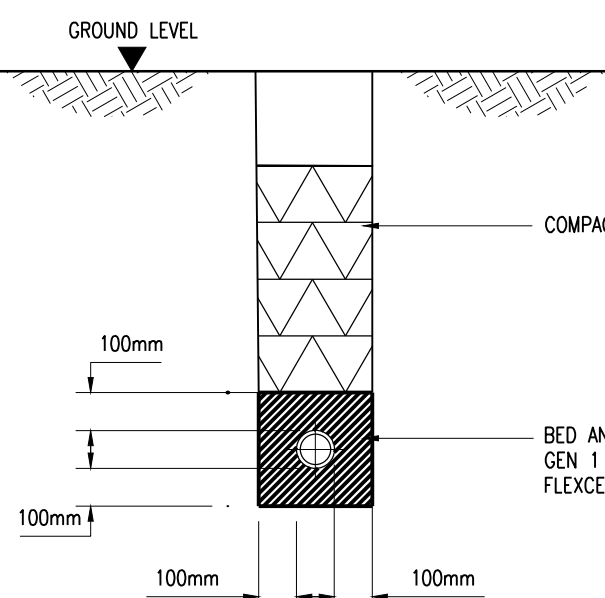


BEDDING FOR FLEXIBLE PIPES
(WHERE COVER >600mm IN LANDSCAPED AREAS OR >900mm IN LIGHT TRAFFICKED AREAS)
(1:20)

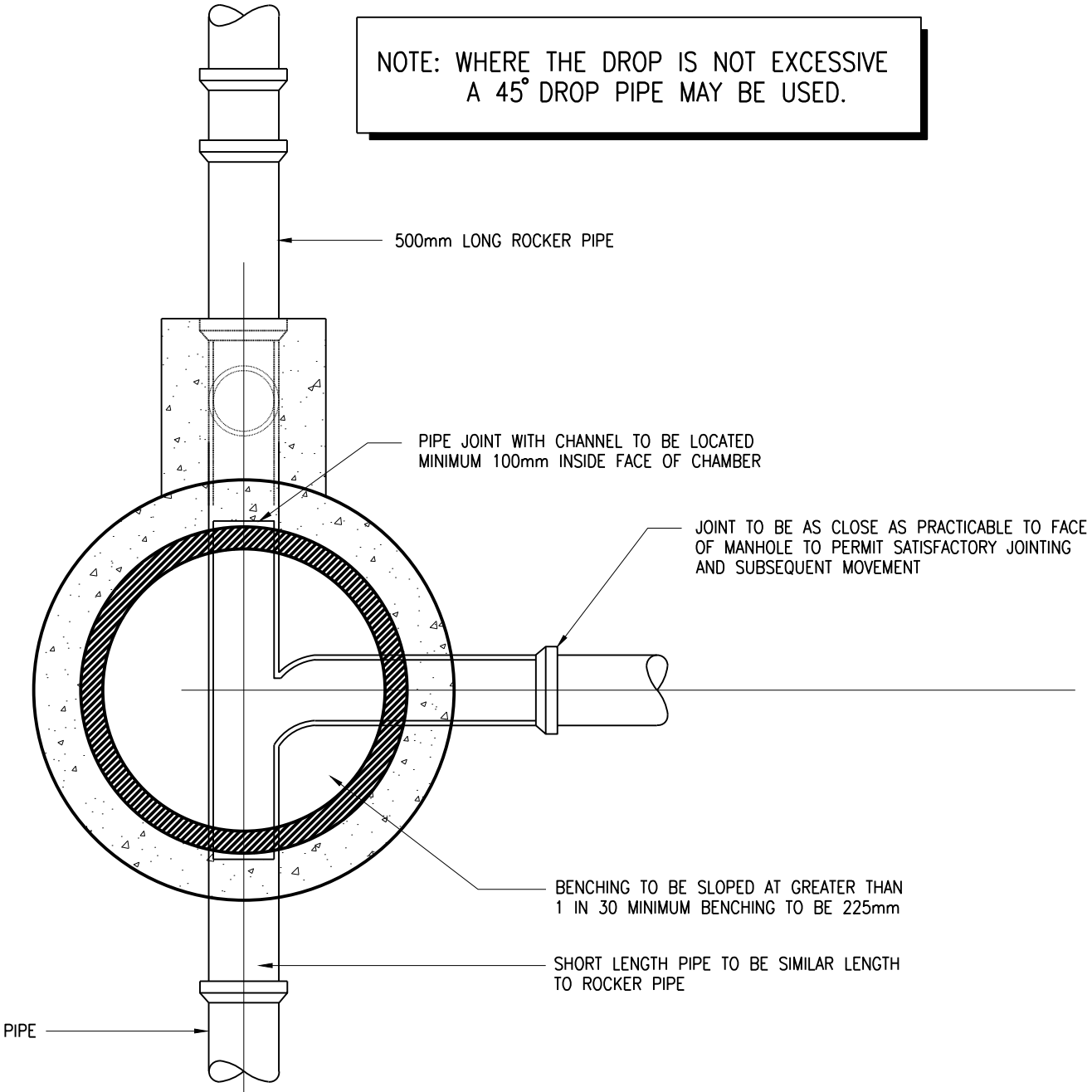
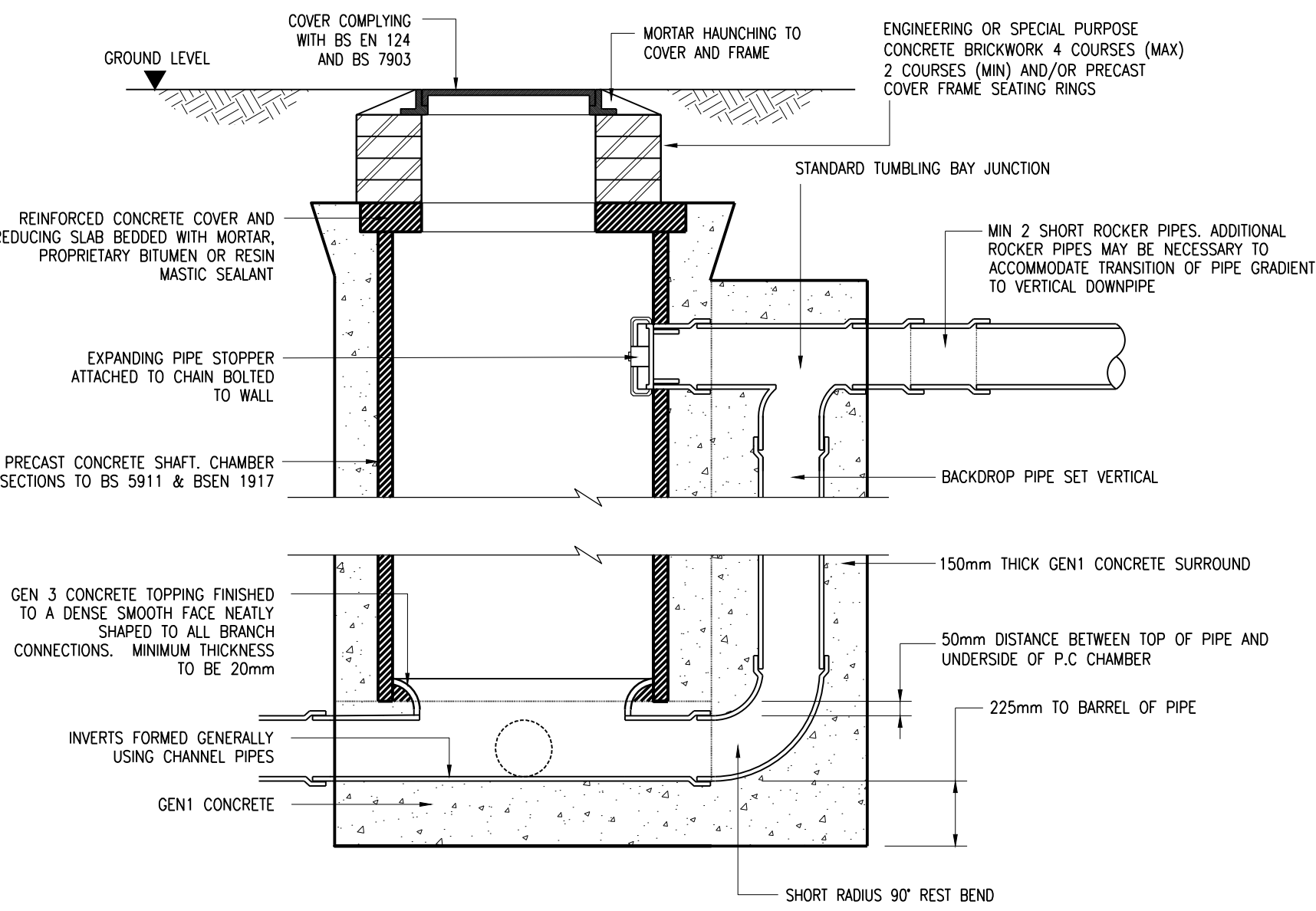
NOTE

MOVEMENT JOINT OF THICK COMPRESSIBLE BOARD SHOULD BE PROVIDED AT EACH SOCKET OR SLEEVE JOINT FACE.

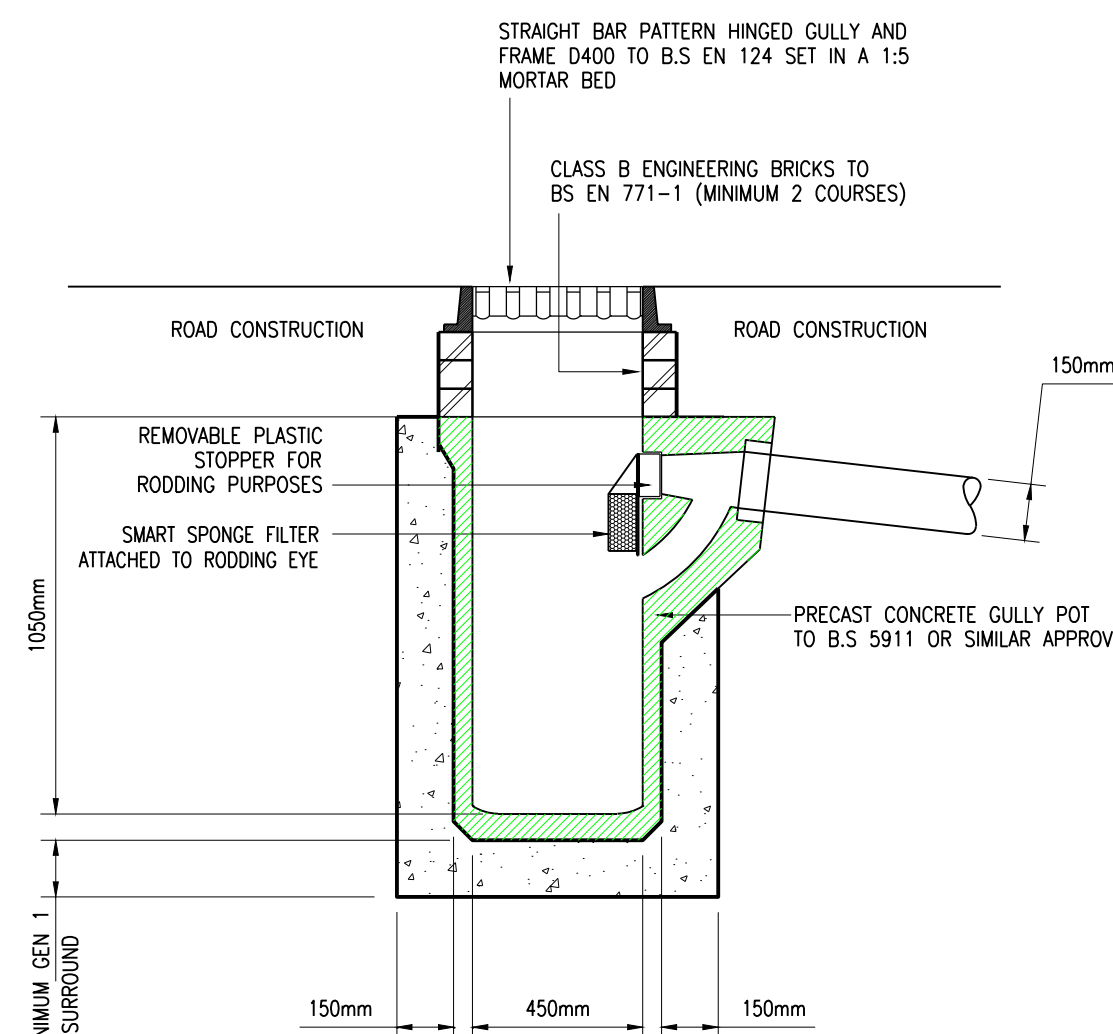
ALL BACKFILLING AND REINSTATEMENT WITHIN ROADS AND STREETS TO BE IN ACCORDANCE WITH THE HIGHWAY AUTHORITY AND HAUC SPECIFICATION.



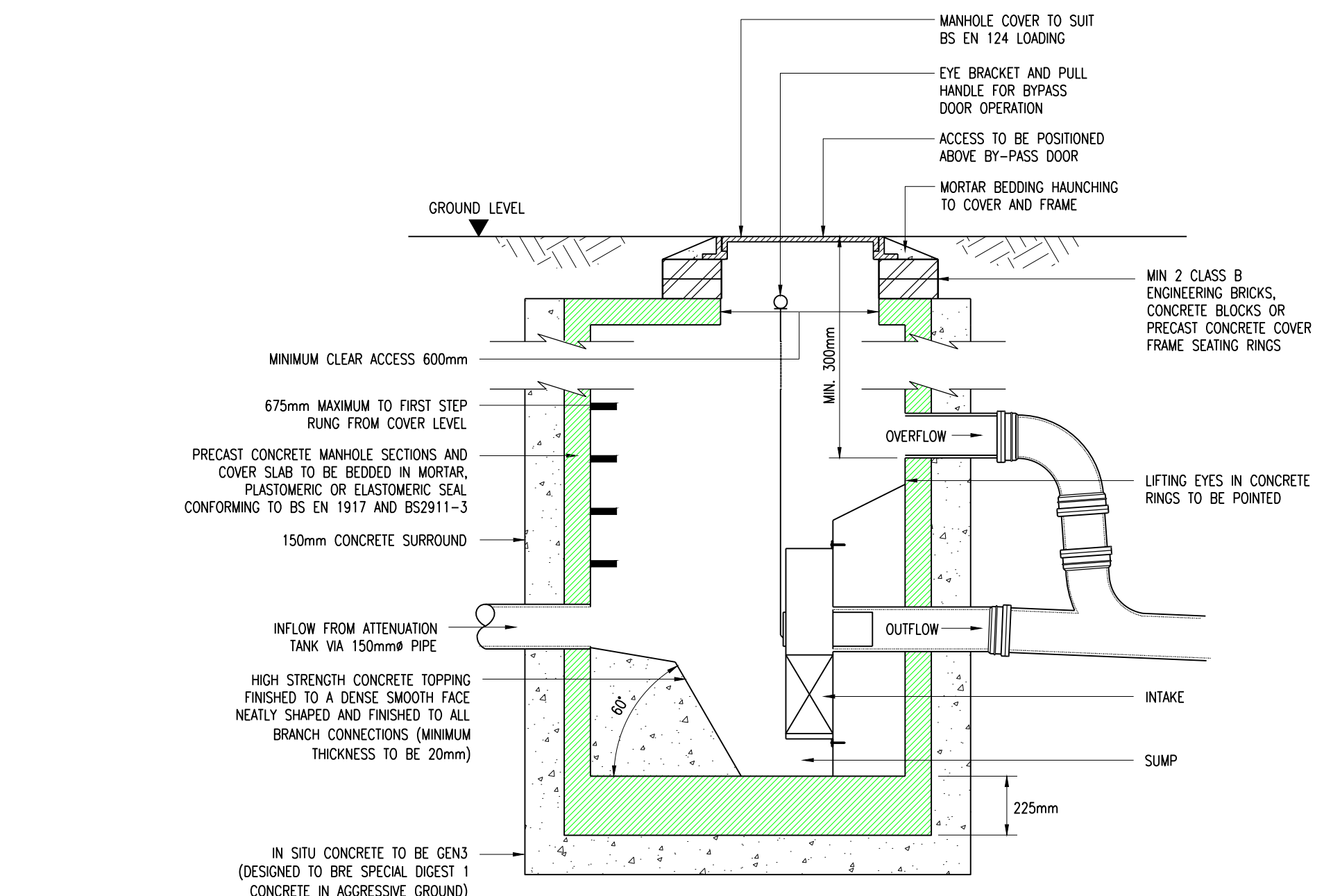
CONCRETE BEDDING DETAIL
(WHERE COVER <600mm IN LANDSCAPED AREAS OR <900mm IN LIGHT TRAFFICKED AREAS)
(1:20)



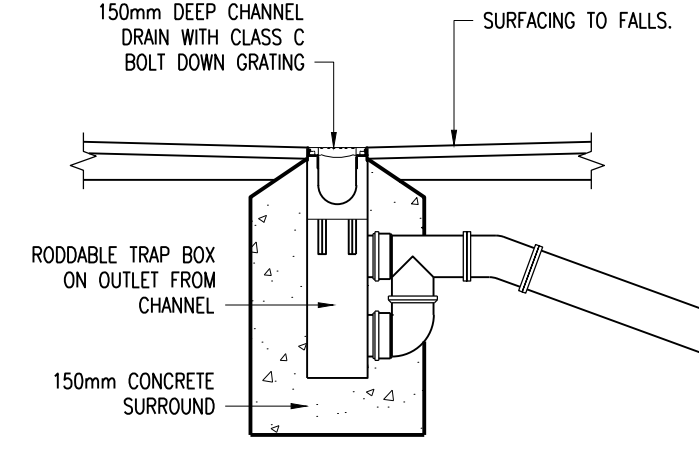
BACKDROP MANHOLE. LESS THAN 3.0m DEEP.
(1:20)



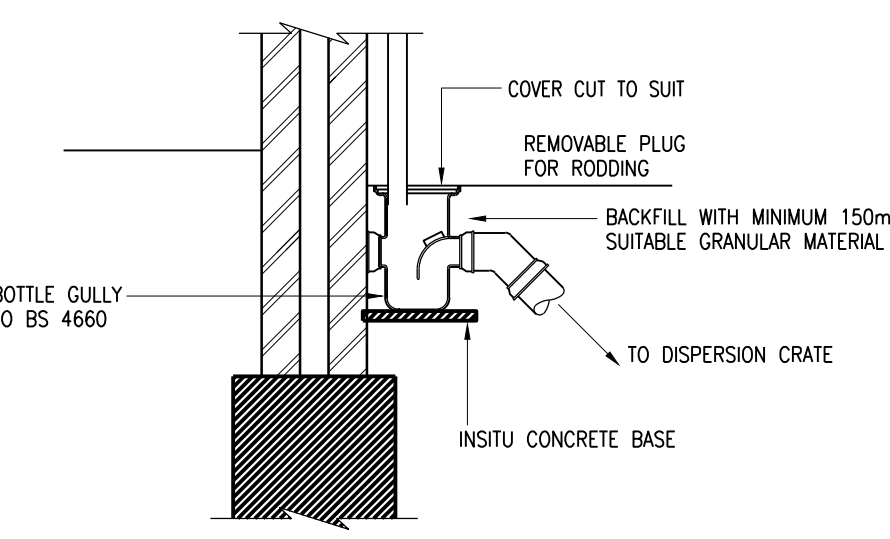
TYPICAL ROAD GULLY WITH SMART SPONGE ADAPTOR
(1:20)



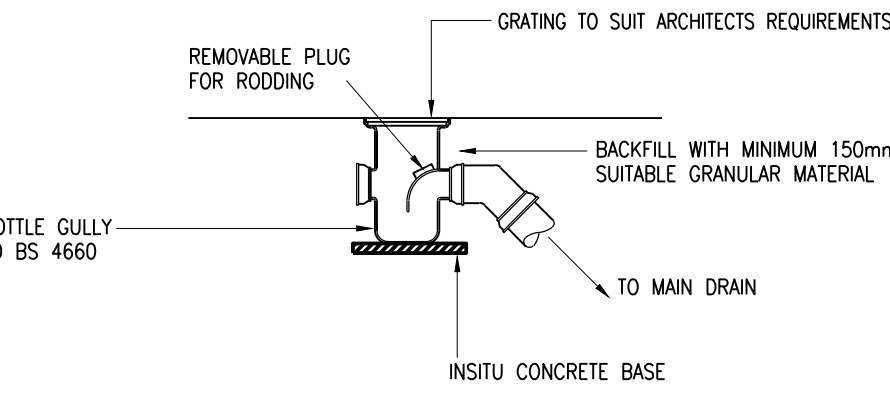
HYDROBRAKE MANHOLE.
(REFER TO FLOW CONTROL MANUFACTURER'S DETAILS FOR INTERNAL MANHOLE ARRANGEMENT)
(1:20)



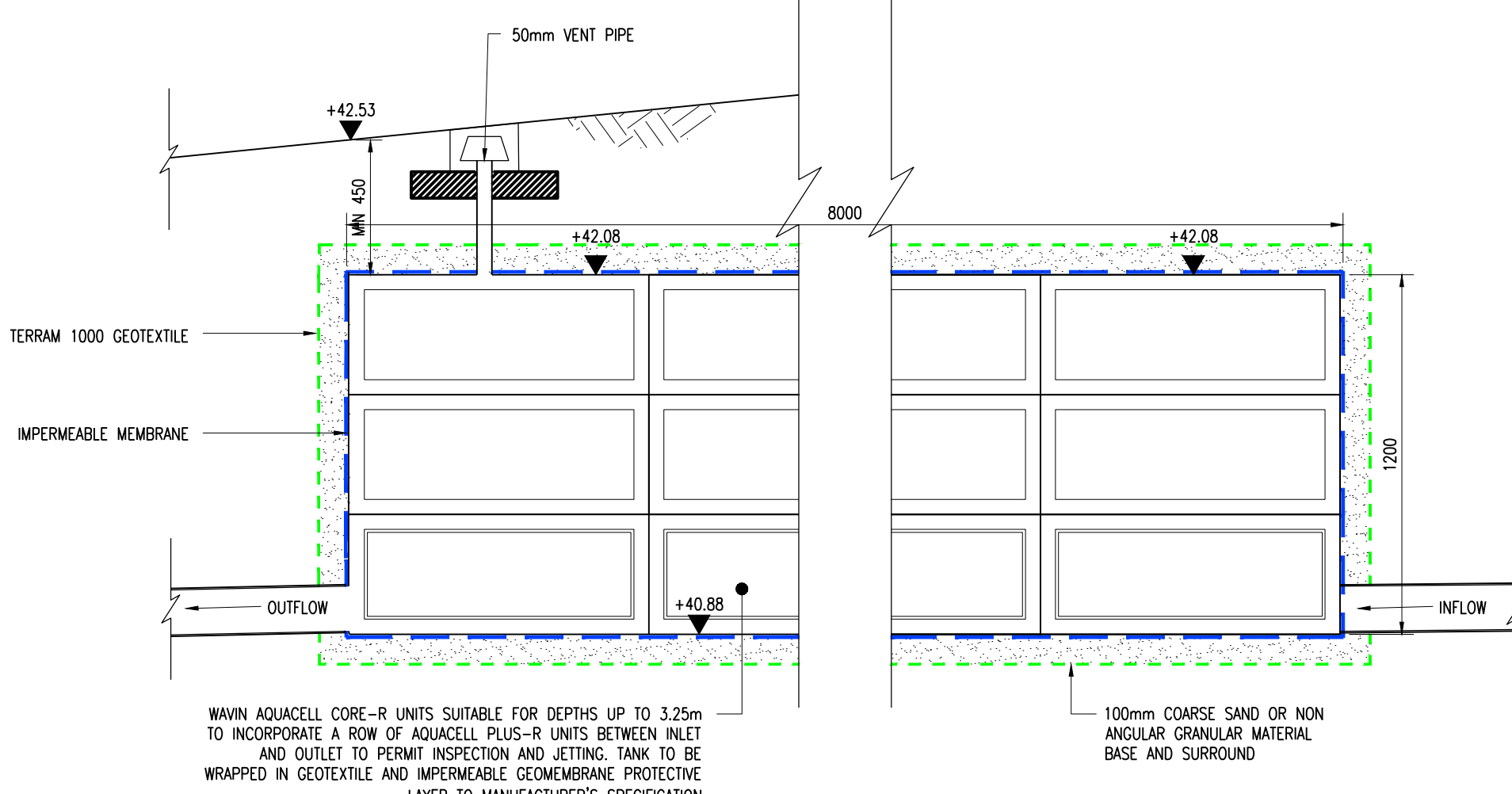
CHANNEL DRAIN
(1:20)



TRAPPED RWP CONNECTION.
(1:20)



BOTTLE GULLY CONNECTION.
(1:20)



ATTENUATION TANK DETAIL.
(1:20)