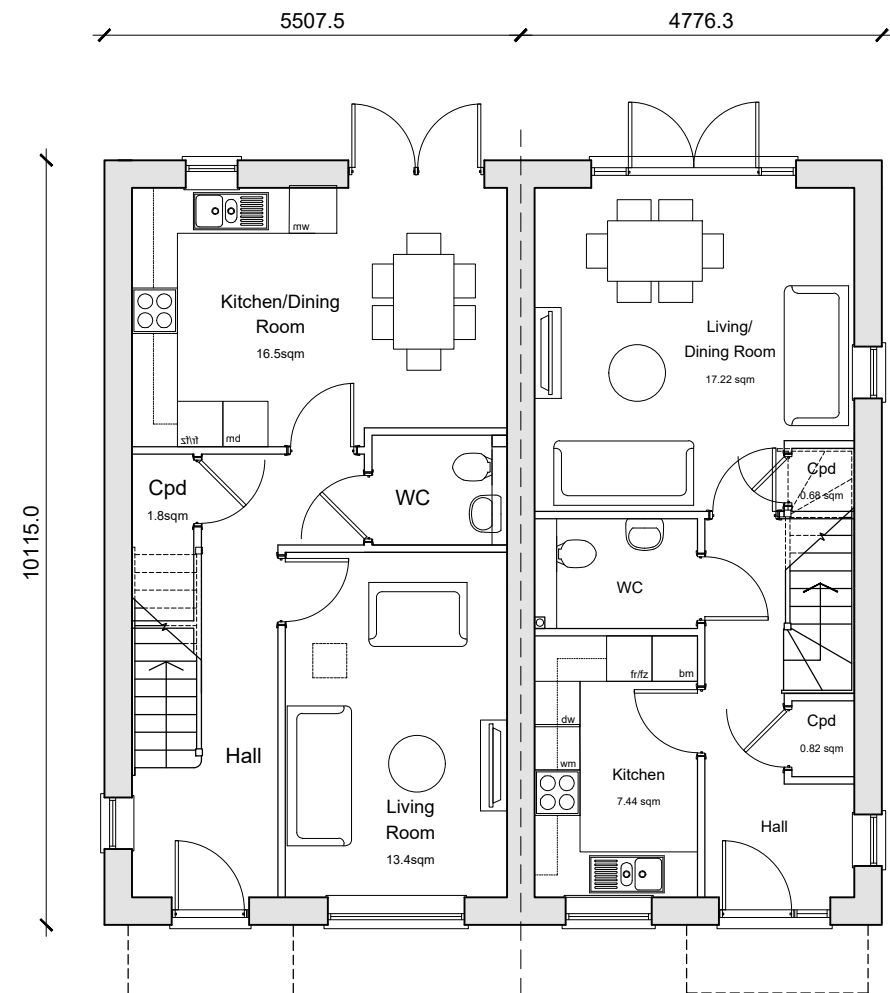


CDM 2015 Health & Safety Information

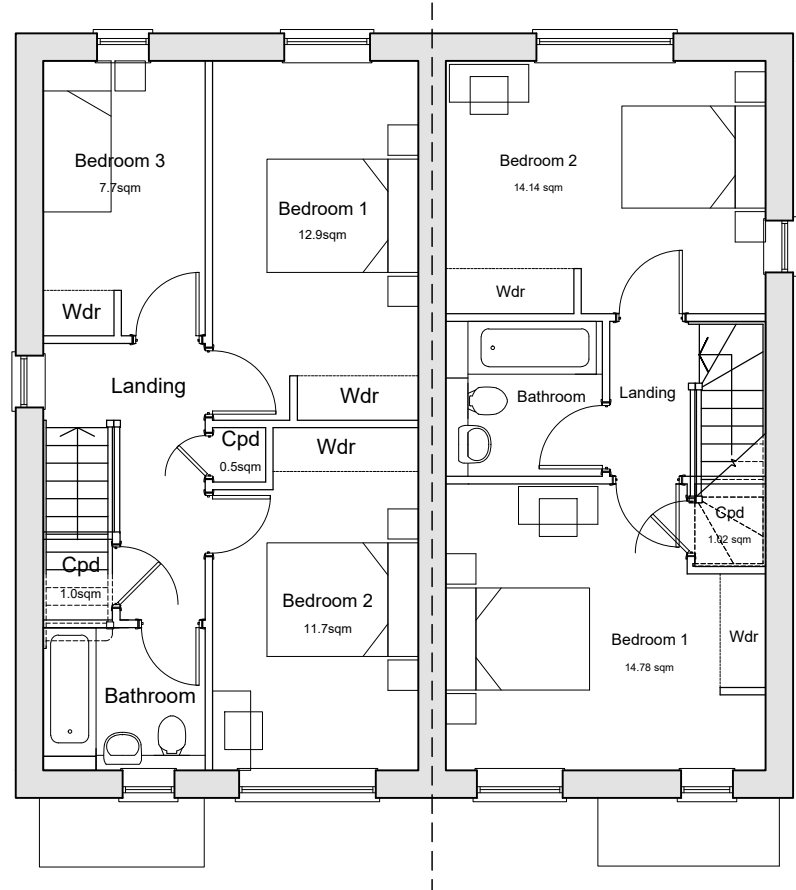
This information relates only to 'Significant Hazards' identified on this drawing and is to be read in conjunction with the Designer's Hazard Register.



Ground Floor Plan
HT31
3-Bedroom 5-Person House
93.59sqm / 1002sqft GIA (excludes)
A minimum of 2.5 ton storage provided in accordance with NDIS requirements.

Ground Floor Plan
HT21
2-Bedroom 4-Person House
79.36sqm / 854sqft GIA (excludes)
A minimum of 2.5 ton storage provided in accordance with NDIS requirements.

Plots 78-79
Plots 73-74 handed



First Floor Plan



Front Elevation



Side Elevation



Rear Elevation



Side Elevation

B	13.11.25	Front Elevation Coloured	CV	KE
A	07.11.25	Updated Elevations	MC	KE
Rev	Date	Revision Details	Dr	Ch

ECE Architecture

London
76 Great Suffolk Street
London SE1 0SL
T 0207 928 2773

Sussex
64-68 Brighton Road
Worthing BN11 2BN
T 01903 248 777

Bristol
Beacon Tower Colston Street
Bristol BS1 4DE
T 0117 214 1101

E hello@ecearchitecture.com
W ecearchitecture.com

Creativity. Quality. Commerciality.
Believe what's possible.

Client's Name

Reside

Job Title
Land at Reeds Lane, Sayers Common

Drawing Title
Plans and Elevations
Plots 73-74 & 78-79

Scale
1:100 @ A1 / 1:200 @ A3

metres 2 4 6 8 10

Drawn	Checked	Date
MC	KE	31.10.25

Job No	Drawing No	Rev
7463	PL-25	B

Status

APPROVAL