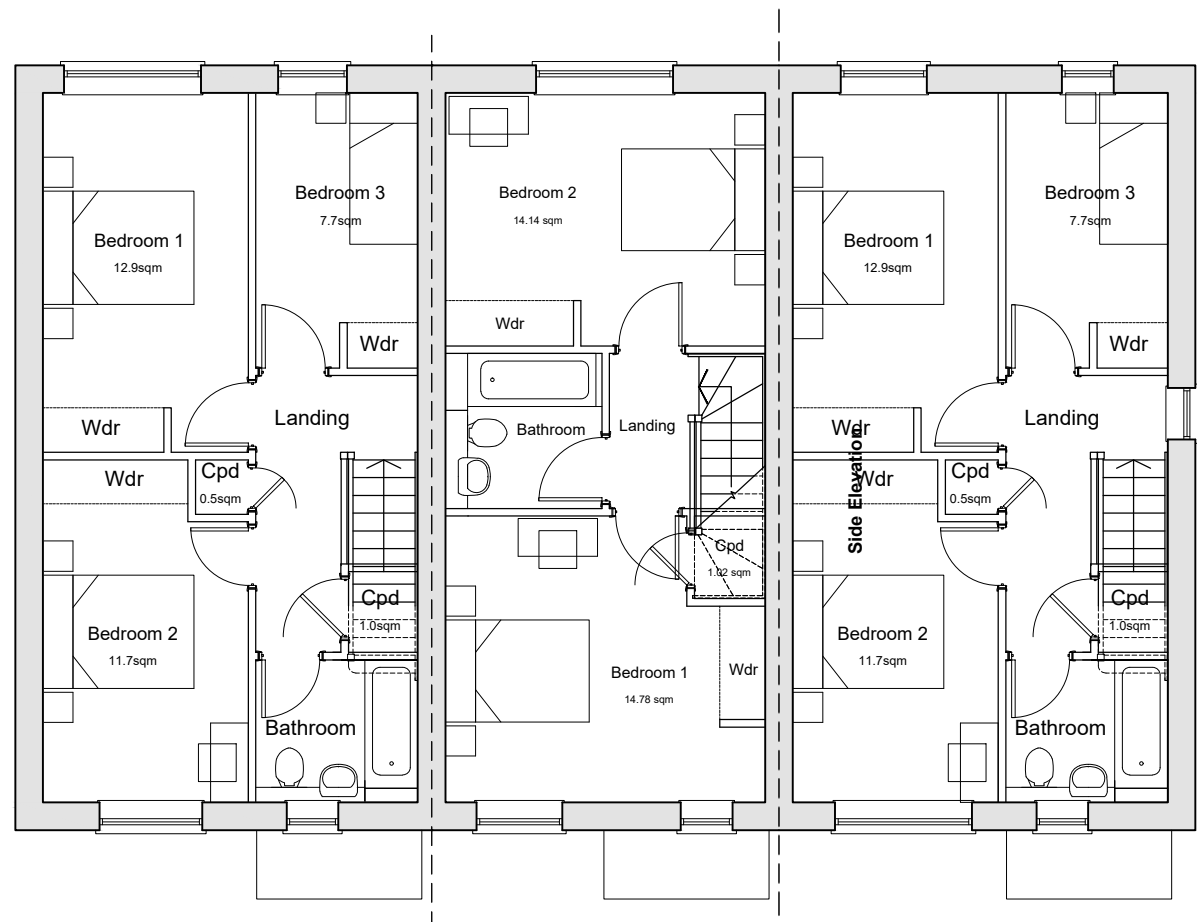


Ground Floor Plan
HT31
3-Bedroom 5-Person House
93.08sqm / 1002sqft GIA (excludes)
A minimum of 2.5 sqm storage provided in accordance with NDIS requirements.

Ground Floor Plan
HT21
2-Bedroom 4-Person House
79.36sqm / 854sqft GIA (excludes)
A minimum of 2.5 sqm storage provided in accordance with NDIS requirements.

Ground Floor Plan
HT31
3-Bedroom 5-Person House
93.08sqm / 1002sqft GIA (excludes)
A minimum of 2.5 sqm storage provided in accordance with NDIS requirements.



First Floor Plan

Plots 26-27-28



Front Elevation



Side Elevation



Rear Elevation



Side Elevation

B	13.11.25	Front Elevation Coloured	CV	KE
A	07.11.25	Updated Elevations	MC	KE
Rev	Date	Revision Details	Dr	Ch

ECE Architecture

London
76 Great Suffolk Street
London SE1 0SL
T 0207 928 2773

Sussex
64-68 Brighton Road
Worthing, BN11 2ZN
T 01903 248 777

Bristol
Beacon Tower Colston Street
Bristol BS1 4DE
T 0117 214 1101

E hello@ecearchitecture.com
W ecearchitecture.com

Creatively. Quality. Commercially.
Believe what's possible.

Client's Name

Reside

Job Title
Land at Reeds Lane, Sayers Common

Drawing Title
Plans and Elevations
Plots 26-27-28

Scale
1:100 @ A1 / 1:200 @ A3

Drawn
MC

Checked
KE

Date
31.10.25

Job No
7463

Drawing No
PL-26

Rev
B

Status
APPROVAL