

Existing Floor Plan -

No Alterations Proposed

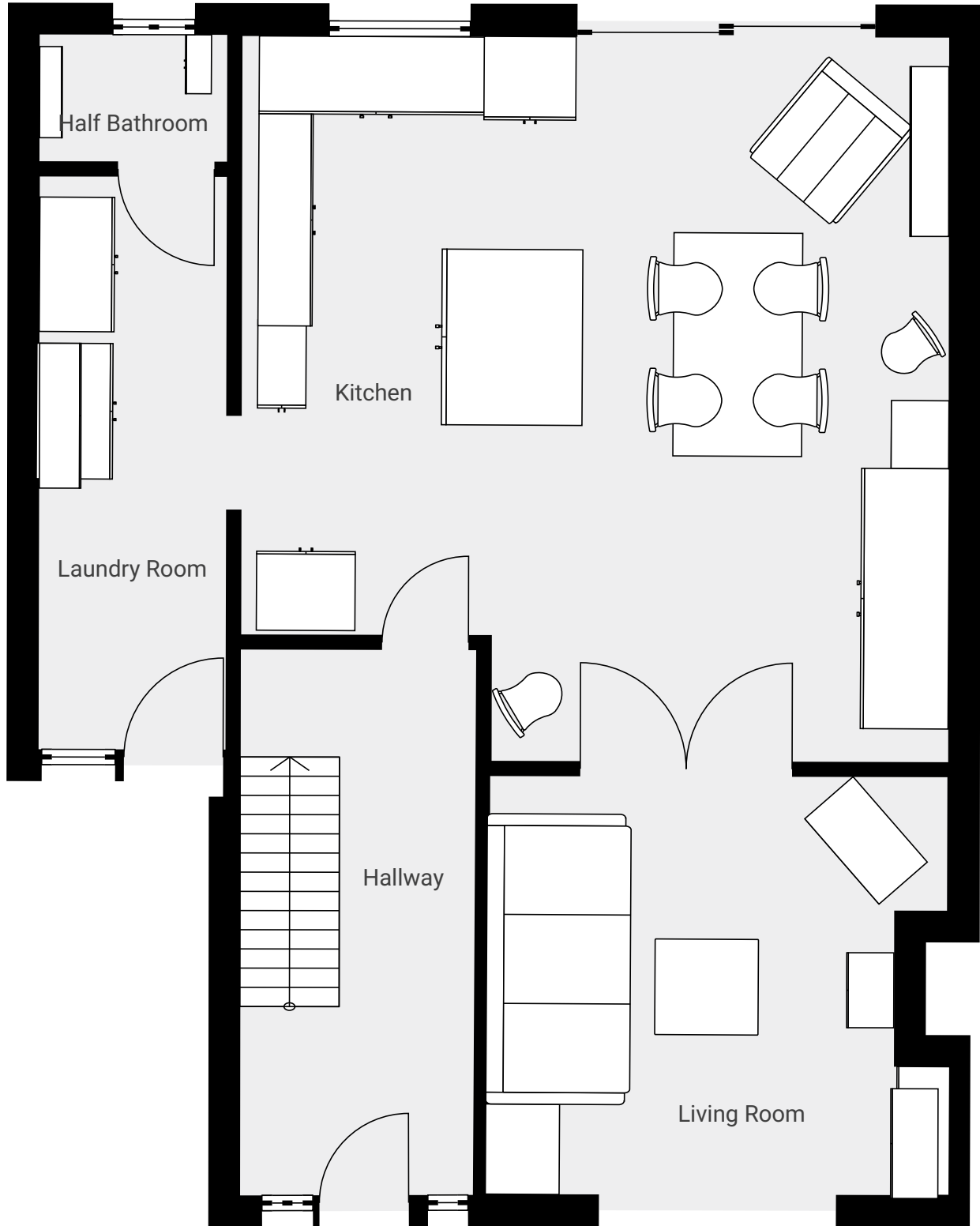
5 Orchard Close, RH17 7PQ Haywards Heath, West Sussex, GB

TOTAL AREA: 1351.58 sq ft • LIVING AREA: 1351.58 sq ft • FLOORS: 3 • ROOMS:

13

▼ Ground Floor

TOTAL AREA: 612.00 sq ft • LIVING AREA: 612.00 sq ft • ROOMS: 5



THIS FLOOR PLAN IS PROVIDED WITHOUT WARRANTY OF ANY KIND. SENSOPIA DISCLAIMS ANY WARRANTY INCLUDING, WITHOUT LIMITATION, SATISFACTORY QUALITY OR ACCURACY OF DIMENSIONS.

0' 2' 4' 6'

1:47

Page 2/12