

# Existing Floor Plan -

## No Alterations Proposed

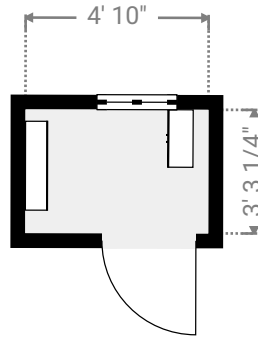
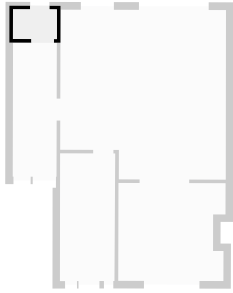
5 Orchard Close, RH17 7PQ Haywards Heath, West Sussex, GB

TOTAL AREA: 1351.58 sq ft • LIVING AREA: 1351.58 sq ft • FLOORS: 3 • ROOMS:

13

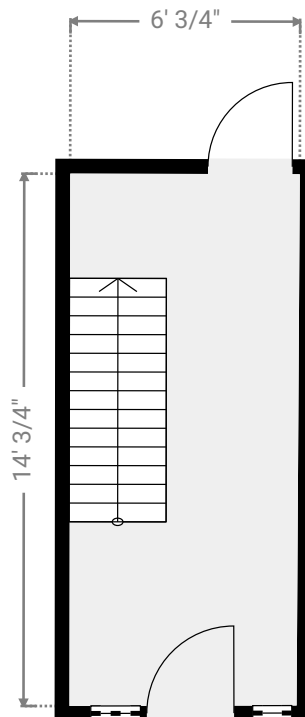
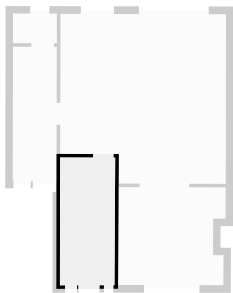
### ▼ Half Bathroom Ground Floor

WIDTH: 4' 10" • LENGTH: 3' 3 1/4" • CEILING HEIGHT: 9' 8 3/4"  
AREA: 15.80 sq ft • PERIMETER: 16' 2 1/2"



### ▼ Hallway Ground Floor

WIDTH: 6' 3/4" • LENGTH: 14' 3/4" • CEILING HEIGHT: 9' 8 3/4"  
AREA: 84.87 sq ft • PERIMETER: 40' 2 1/4"



THIS FLOOR PLAN IS PROVIDED WITHOUT WARRANTY OF ANY KIND. SENSOPIA DISCLAIMS ANY WARRANTY INCLUDING, WITHOUT LIMITATION, SATISFACTORY QUALITY OR ACCURACY OF DIMENSIONS.

