

Existing Floor Plan -

No Alterations Proposed

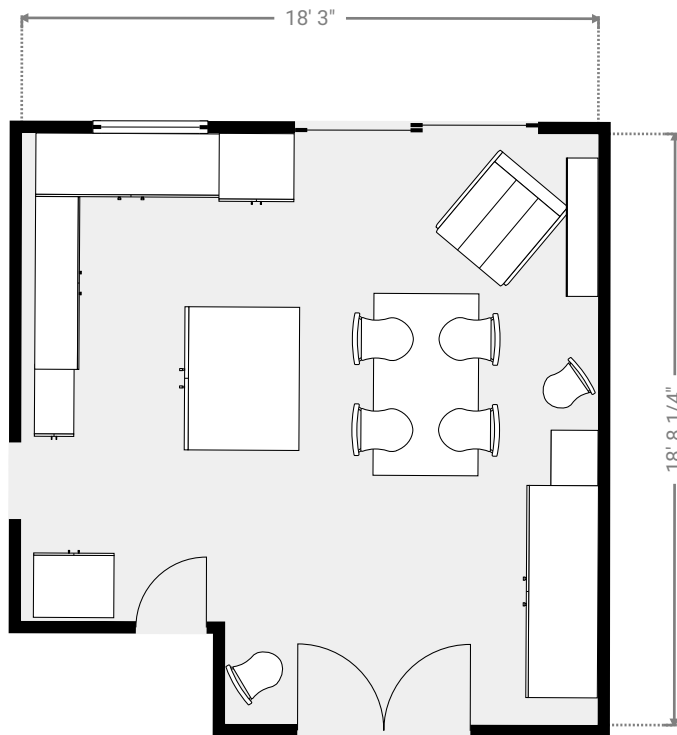
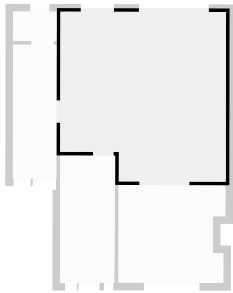
5 Orchard Close, RH17 7PQ Haywards Heath, West Sussex, GB

TOTAL AREA: 1351.58 sq ft • LIVING AREA: 1351.58 sq ft • FLOORS: 3 • ROOMS:

13

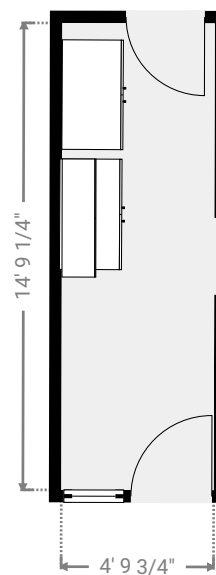
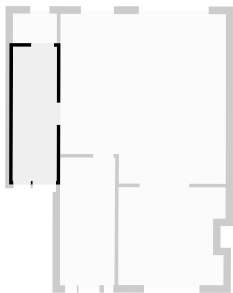
▼ Kitchen Ground Floor

WIDTH: 18' 3" • LENGTH: 18' 8 1/4" • CEILING HEIGHT: 9' 8 3/4"
AREA: 319.62 sq ft • PERIMETER: 73' 10"



▼ Laundry Room Ground Floor

WIDTH: 4' 9 3/4" • LENGTH: 14' 9 1/4" • CEILING HEIGHT: 9' 8 3/4"
AREA: 71.20 sq ft • PERIMETER: 39' 2 1/4"



THIS FLOOR PLAN IS PROVIDED WITHOUT WARRANTY OF ANY KIND. SENSOPIA DISCLAIMS ANY WARRANTY INCLUDING, WITHOUT LIMITATION, SATISFACTORY QUALITY OR ACCURACY OF DIMENSIONS.



1:73