

Existing Floor Plan -

No Alterations Proposed

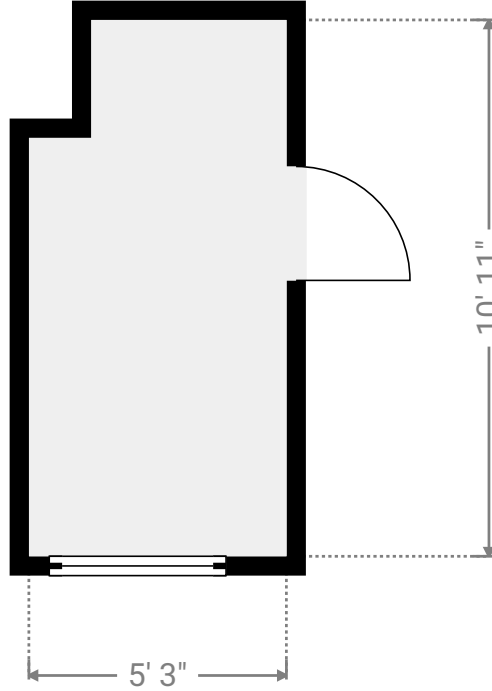
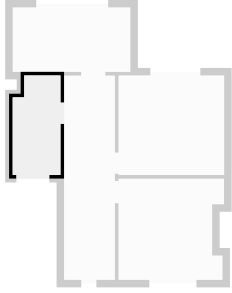
5 Orchard Close, RH17 7PQ Haywards Heath, West Sussex, GB

TOTAL AREA: 1351.58 sq ft • LIVING AREA: 1351.58 sq ft • FLOORS: 3 • ROOMS:

13

▼ Bathroom 1st Floor

WIDTH: 5' 3" • LENGTH: 10' 11" • CEILING HEIGHT: 9' 1 3/4"
AREA: 54.23 sq ft • PERIMETER: 32' 4"



▼ Bedroom2 1st Floor

WIDTH: 11' 7 1/4" • LENGTH: 10' 11 1/4" • CEILING HEIGHT: 7' 11 1/2"
AREA: 126.74 sq ft • PERIMETER: 45' 1/2"

