

Existing Floor Plan –

No Alterations Proposed

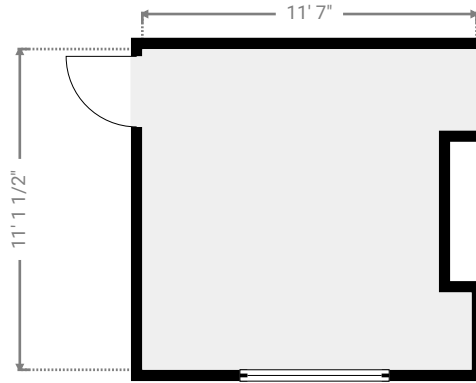
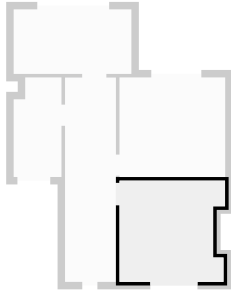
5 Orchard Close, RH17 7PQ Haywards Heath, West Sussex, GB

TOTAL AREA: 1351.58 sq ft • LIVING AREA: 1351.58 sq ft • FLOORS: 3 • ROOMS:

13

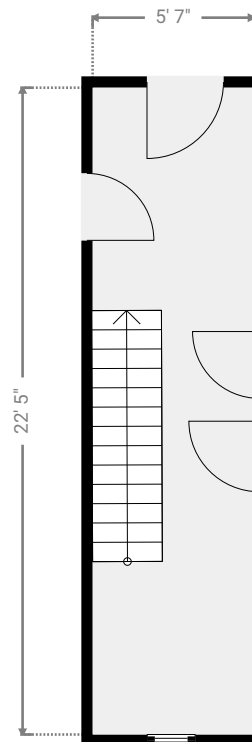
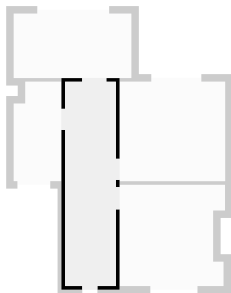
▼ Bedroom 3 1st Floor

WIDTH: 11' 7" • LENGTH: 11' 1 1/2" • CEILING HEIGHT: 7' 11 1/2"
AREA: 120.98 sq ft • PERIMETER: 47' 8 1/4"



▼ Hallway 1st Floor

WIDTH: 5' 7" • LENGTH: 22' 5" • CEILING HEIGHT: 7' 11 1/2"
AREA: 125.20 sq ft • PERIMETER: 56'



THIS FLOOR PLAN IS PROVIDED WITHOUT WARRANTY OF ANY KIND. SENSOPIA DISCLAIMS ANY WARRANTY INCLUDING, WITHOUT LIMITATION, SATISFACTORY QUALITY OR ACCURACY OF DIMENSIONS.



1:80