

Existing Floor Plan -

No Alterations Proposed

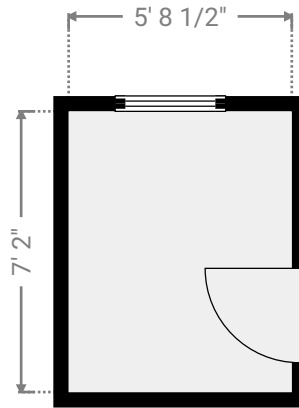
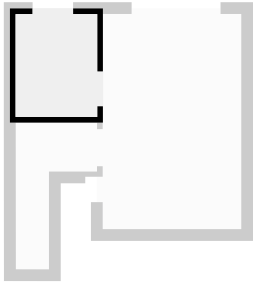
5 Orchard Close, RH17 7PQ Haywards Heath, West Sussex, GB

TOTAL AREA: 1351.58 sq ft • LIVING AREA: 1351.58 sq ft • FLOORS: 3 • ROOMS:

13

▼ Bathroom 2nd Floor

WIDTH: 5' 8 1/2" • LENGTH: 7' 2" • CEILING HEIGHT: 9' 7 3/4"
AREA: 40.93 sq ft • PERIMETER: 25' 9 1/4"



▼ Bedroom 4 2nd Floor

WIDTH: 9' 8" • LENGTH: 15' 1/4" • CEILING HEIGHT: 9' 7 3/4"
AREA: 145.25 sq ft • PERIMETER: 49' 4 1/2"

