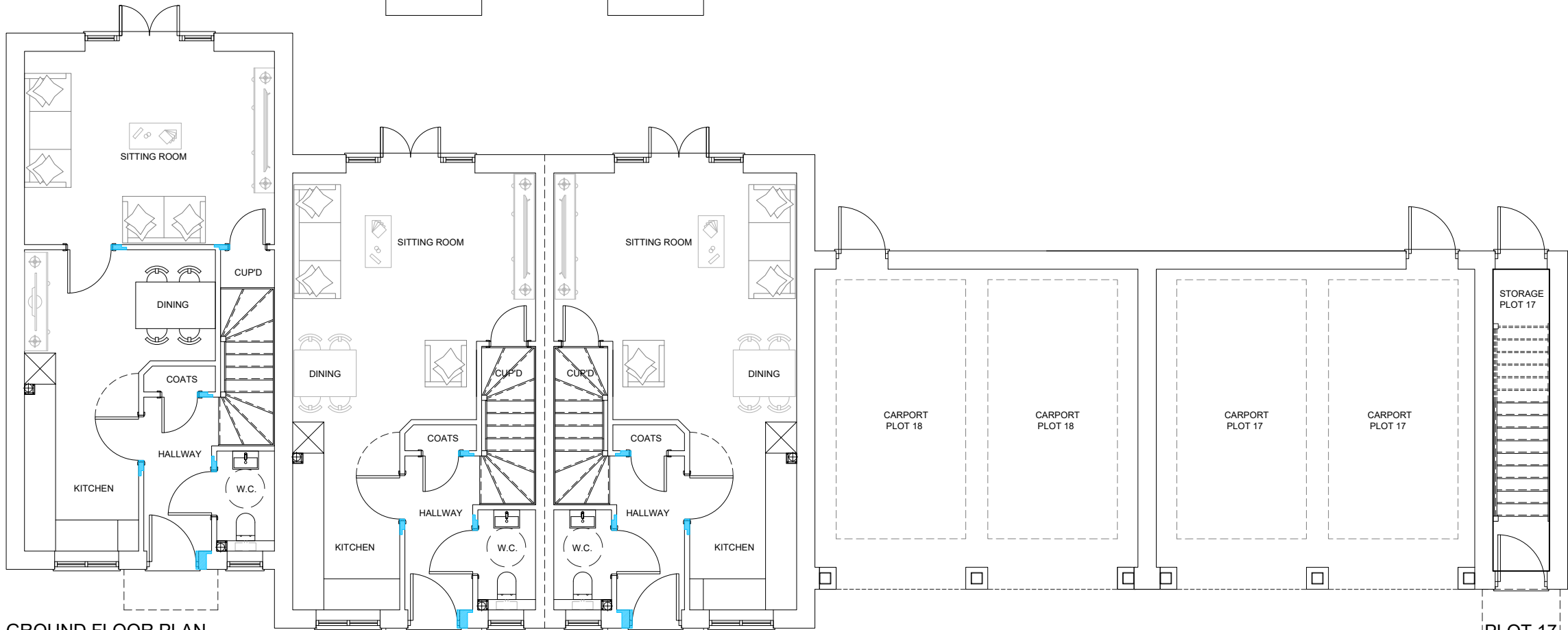


FIRST FLOOR PLAN



GROUND FLOOR PLAN
PLOT 20
1001 SQFT - 93 SQM

PLOT 19
850 SQFT - 79 SQM

PLOT 18
850 SQFT - 79 SQM

PLOT 17
74 sqm
(Not Including Staircase or
entrance lobby)

key plan (if applicable)					
NDSS CHECK	1 STOREY DWELLINGS				
	2 BED	DOUBLE BEDROOM - 11.5 sqm & 2.75m Wide (2.55m every other one)	✓	TOTAL GIA - Over 70 sqm	✓
		SINGLE BEDROOM - 7.5 sqm & 2.15m Wide	✓	BUILT IN STORAGE - Over 2.0 sqm	✓
NDSS CHECK	2 STOREY DWELLINGS				
	2 BED	DOUBLE BEDROOM - 11.5 sqm & 2.75m Wide (2.55m every other one)	✓	TOTAL GIA - Over 79 sqm	✓
		SINGLE BEDROOM - 7.5 sqm & 2.15m Wide	✓	BUILT IN STORAGE - Over 2.0 sqm	✓
NDSS CHECK	2 STOREY DWELLINGS				
	3 BED	DOUBLE BEDROOM - 11.5 sqm & 2.75m Wide (2.55m every other one)	✓	TOTAL GIA - Over 93 sqm	✓
		SINGLE BEDROOM - 7.5 sqm & 2.15m Wide	✓	BUILT IN STORAGE - Over 2.0 sqm	✓

notes

revision	date	prepared	description



ANTLER HOMES

Knightway House
Park Street
Bagshot
Surrey
GU19 5AQ
T : 01276 538941
www.antlerhomes.co.uk

project
LAND TO THE REAR OF CHESEPEAKE,
REEDS LANE, SAYERS COMMON

drawing
PLOT 17 TO 20 -
FLOOR PLANS

date	scale	drawn
14.11.24	1:100 @ A2	MJ

drawing number	revision
AH291 - PL.17	-

