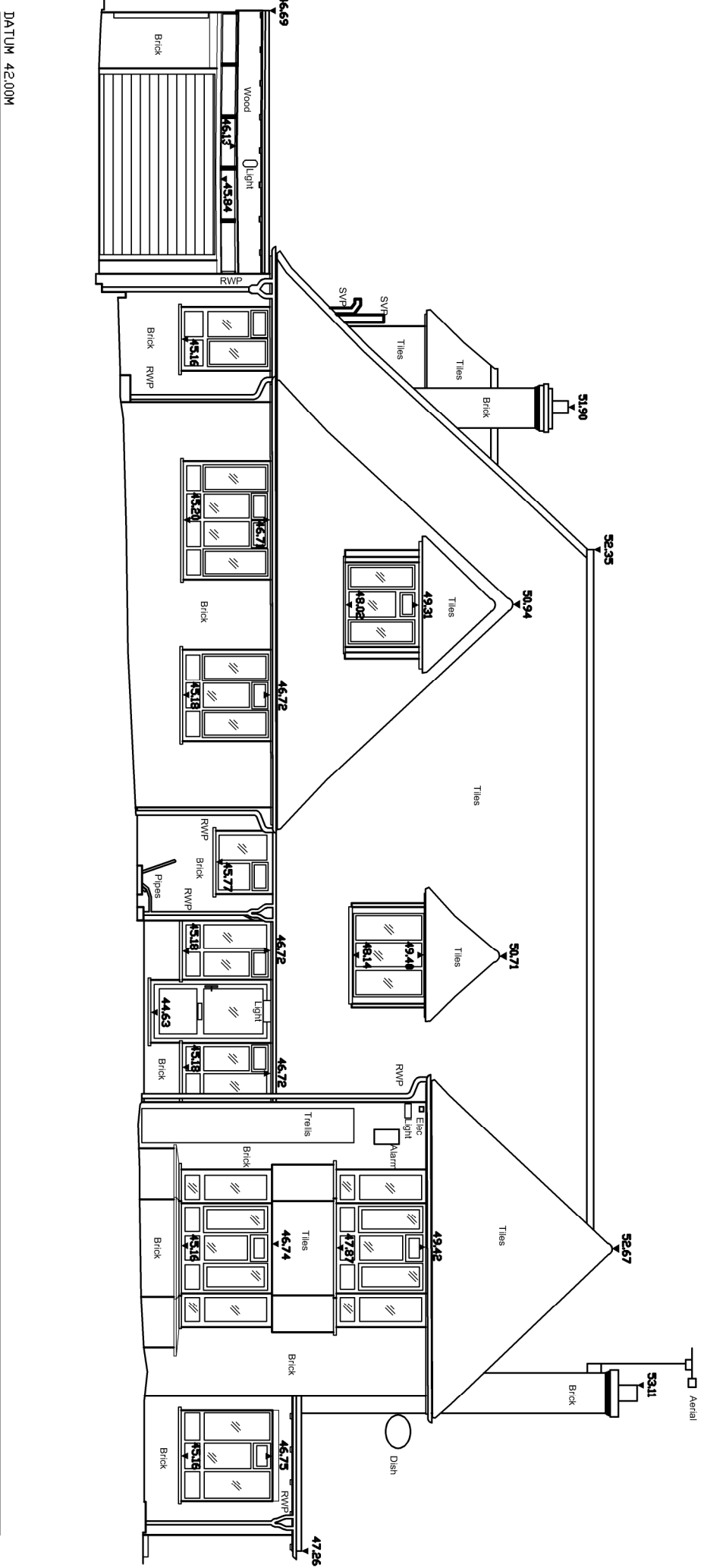


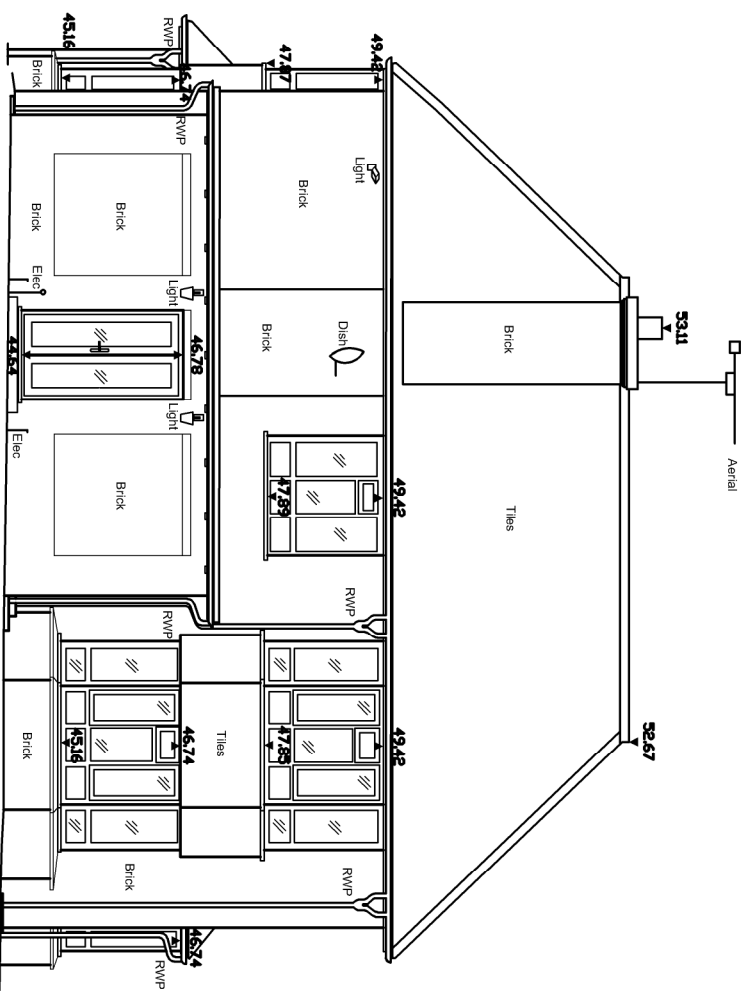
55.00m
54.00m
53.00m
52.00m
51.00m
50.00m
49.00m
48.00m
47.00m
46.00m
45.00m
44.00m
43.00m
42.00m



Front Elevation



Side Elevation



55.00m
54.00m
53.00m
52.00m
51.00m
50.00m
49.00m
48.00m
47.00m
46.00m
45.00m
44.00m
43.00m
42.00m

A 10.02.26 Planning Issue
JT

Rev Date/By Revision Note

JTA
Jonathan Talley
Architects Limited

Client:
Mr and Mrs Najefy,
Project:
43 Greenways,
Heywards Heath, RH16 2DT

Drawing:
Existing Elevations

PLANNING

Drawing Number 075-001-300 Rev A
Scale 1:100
Drawn JT
Date January 2026
Paper Size A3
Checked JT

E-mail info@jtalimited.co.uk
Telephone 07956 870 079
Web www.jtalimited.co.uk

Jonathan Talley Architects Limited is a registered architect in the United Kingdom. The firm is a limited liability company registered in England and Wales with registration number 1370771. Jonathan Talley Architects Limited is a member of the Royal Institute of British Architects (RIBA).