

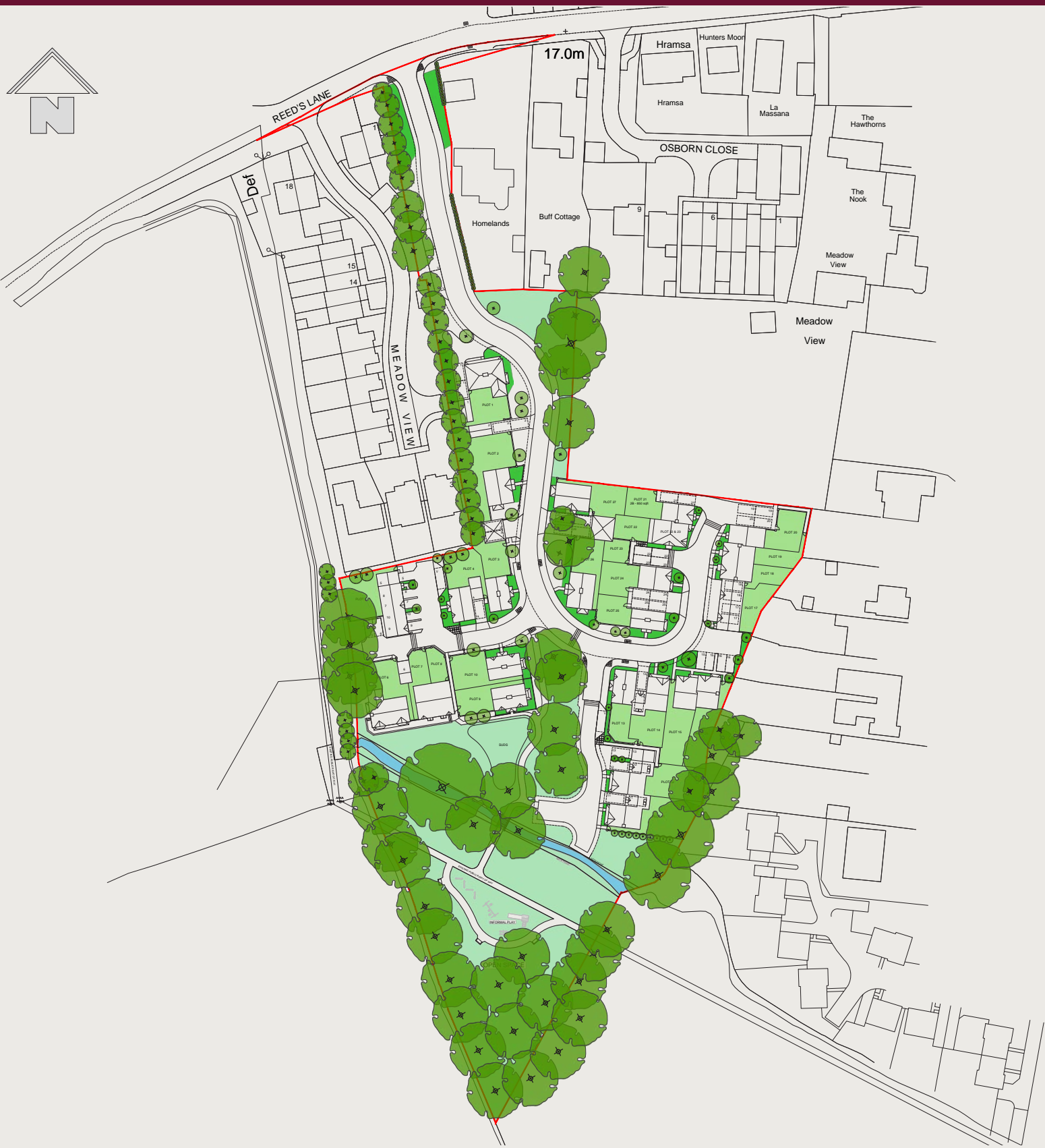
SOFT LANDSCAPING

The Soft Landscaping proposals will seek to retain existing trees and hedgerow's where possible. Native species will be used to enhance the existing soft landscaping and integrate the development into its surrounding.

DESIGN PRINCIPLES - SOFT LANDSCAPING

LEGEND :

- SITE BOUNDARY
- EXISTING TREES & HEDGEROWS RETAINED
- PROPOSED TREE PLANTING
- OPEN SPACE / WILD FLOWER MEADOW
- SHRUBS, ANNUAL & PERENNIAL PLANTING TO FRONT GARDENS
- PRIVATE GARDENS
- UPGRADED PLANTING TO EXISTING WATERCOURSE TO INCREASE BIODIVERSITY




EXTERNAL MATERIALS

A comprehensive palette of external materials, using colours and textures, to reflect the local vernacular will be used to seamlessly integrate the development into its surroundings.


Note - Actual specified materials may change due to ongoing availability, however, the quality and colour palette will remain consistent.

DESIGN PRINCIPLES - EXTERNAL MATERIALS


MATERIALS PALETTE




ROOF TILE - 1
SANDTOFT ANTIQUE 2 SANDFACED
TERRACOTTA HALF ROUND RIDGE



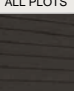
ROOF TILE - 2
SANDTOFT SANDOWN SANDFACED
BONNET HIPS TO PORCH ROOF




ROOF TILE - 2
CEDRAL BLUE / BLACK SLATE




WINDOW CILLS -
RECONSTITUTED STONE -
PORTLAND STONE




ALL PLOTS
WEATHERBOARDING -
HARDIE PLANK - BLACK




WEATHERBOARDING -
HARDIE PLANK - WHITE




RENDER -
ROUGH CAST OFF WHITE / CREAM




MAIN FACING BRICK - 1
AAB SELSTED BLEND



MAIN FACING BRICK - 2
AAB SEAFORD BLEND

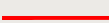


MAIN FACING BRICK - 3
AAB TYPHOON BLEND




ALL PLOTS
CONTRASTING FEATURE BRICK -
AAB STAPLEFIELD STOCK


LEGEND :




SITE BOUNDARY




ROOF TILE 1



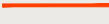
ROOF TILE 2



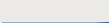
ROOF TILE 3




FACING BRICK 1




FACING BRICK 2




FACING BRICK 3




BLACK WEATHERBOARDING



WHITE WEATHERBOARDING



RENDER
BLACK FRONT DOOR - BLACK WINDOWS
AND DOOR FRAMES.
BLACK FASCIAS & BARGE BOARDS,
GALLOW BRACKETS ETC.



BLACK FRONT DOOR - WHITE WINDOWS
AND DOOR FRAMES.
WHITE FASCIAS & BARGE BOARDS, POSTS
GALLOW BRACKETS ETC.

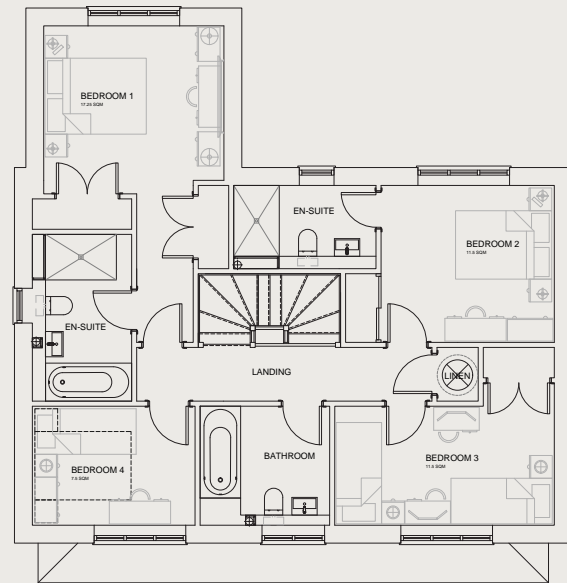
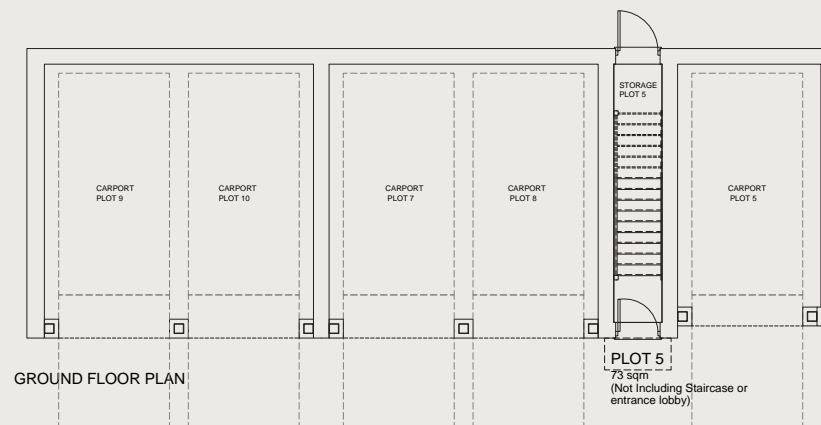


CONTEXT WITH WIDER AREA

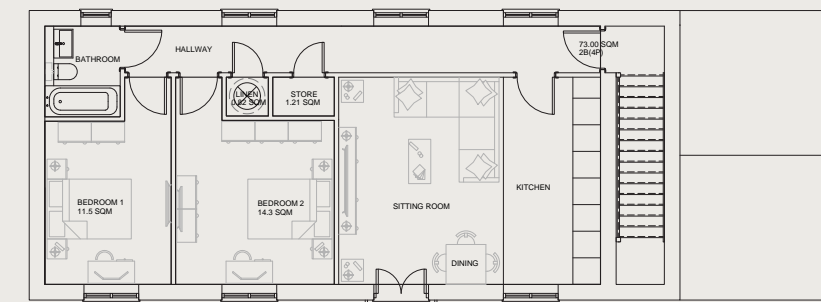


APPEARANCE - HOUSE PLANS

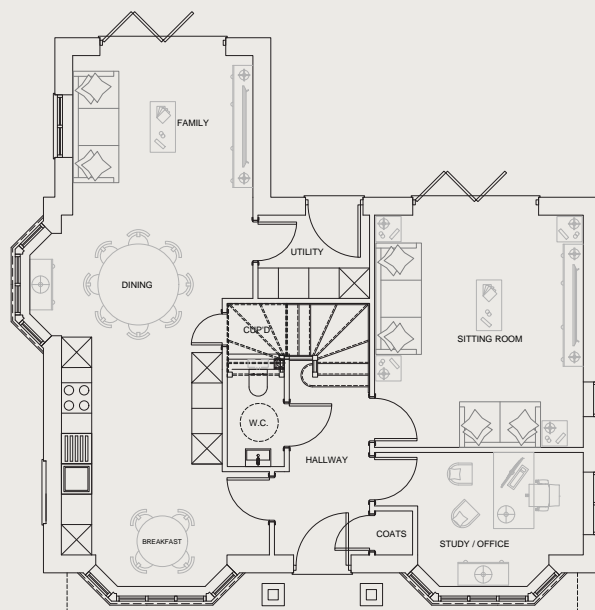
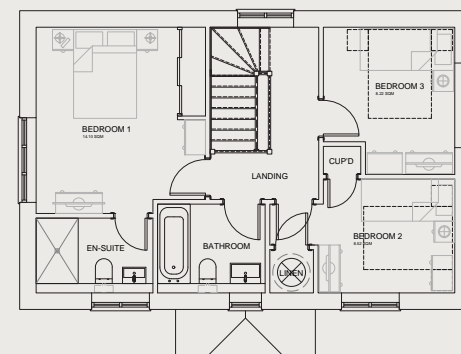
This proposal seeks to provide a variety of homes which are of high quality, design lead and are in keeping with the local area. Some of the key design principles to these house type designs below include, well proportioned living areas, deep windows to habitable rooms, appropriate sized gardens and spaces that maximise the use of natural daylight. All homes will be designed to conform with Nationally Described Space Standards (NDSS) as well as Part M of the building regulations and will have level thresholds to front doors to ensure they are accessible for disabled residents and visitors alike. One ground floor Masionette will be a fully fundtioning Wheelchair Home complying with Building Regulations M4(3).

FIRST FLOOR PLAN
PLOT 1

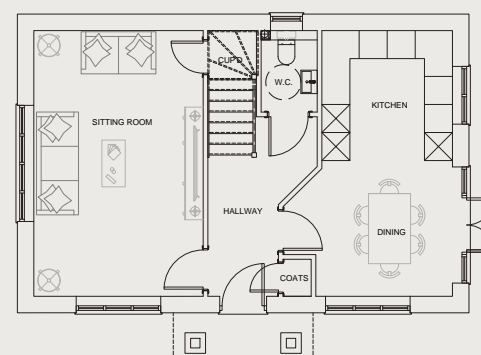
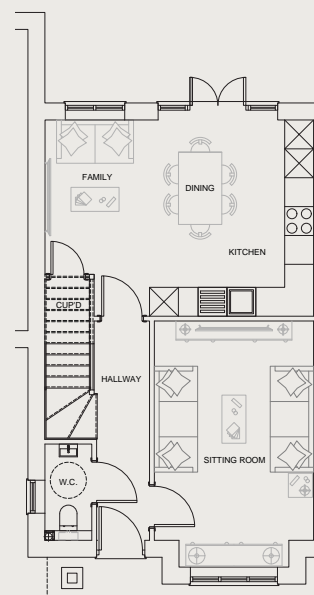
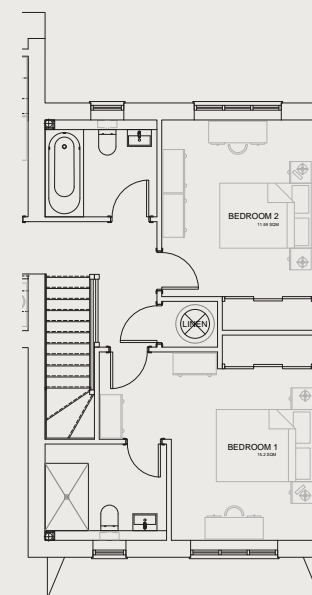
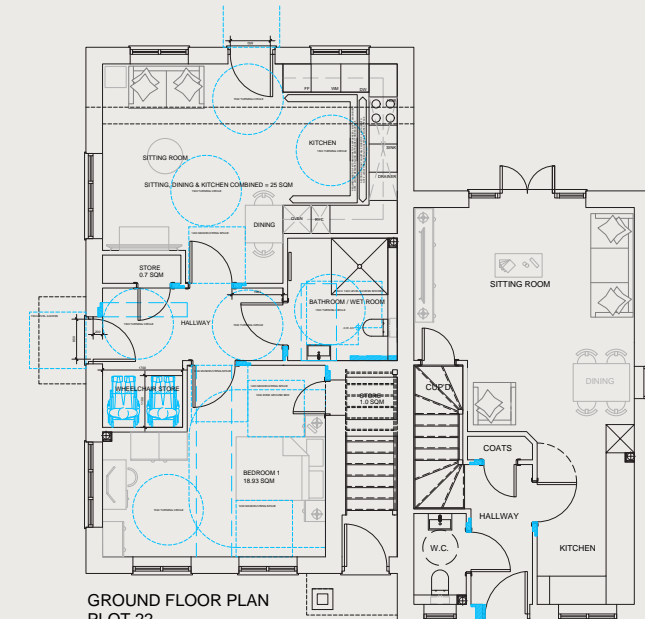
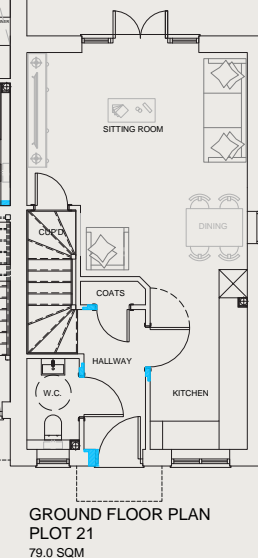
GROUND FLOOR PLAN



FIRST FLOOR PLAN

GROUND FLOOR PLAN
PLOT 1
1772 sqft

FIRST FLOOR PLAN

GROUND FLOOR PLAN
1096 SQFTGROUND FLOOR PLAN
PLOT 11
1277 sqftFIRST FLOOR PLAN
PLOT 11GROUND FLOOR PLAN
PLOT 22
61.15 SQMGROUND FLOOR PLAN
PLOT 21
79.0 SQM

APPEARANCE - ARCHITECTURE

This proposal seeks to create an interesting, attractive and varied environment, through the use of different house type designs, materials, roofscapes and landscape framework. The proposal will also incorporate features reflecting the local vernacular.



APPEARANCE - SAMPLE STREET SCENES

