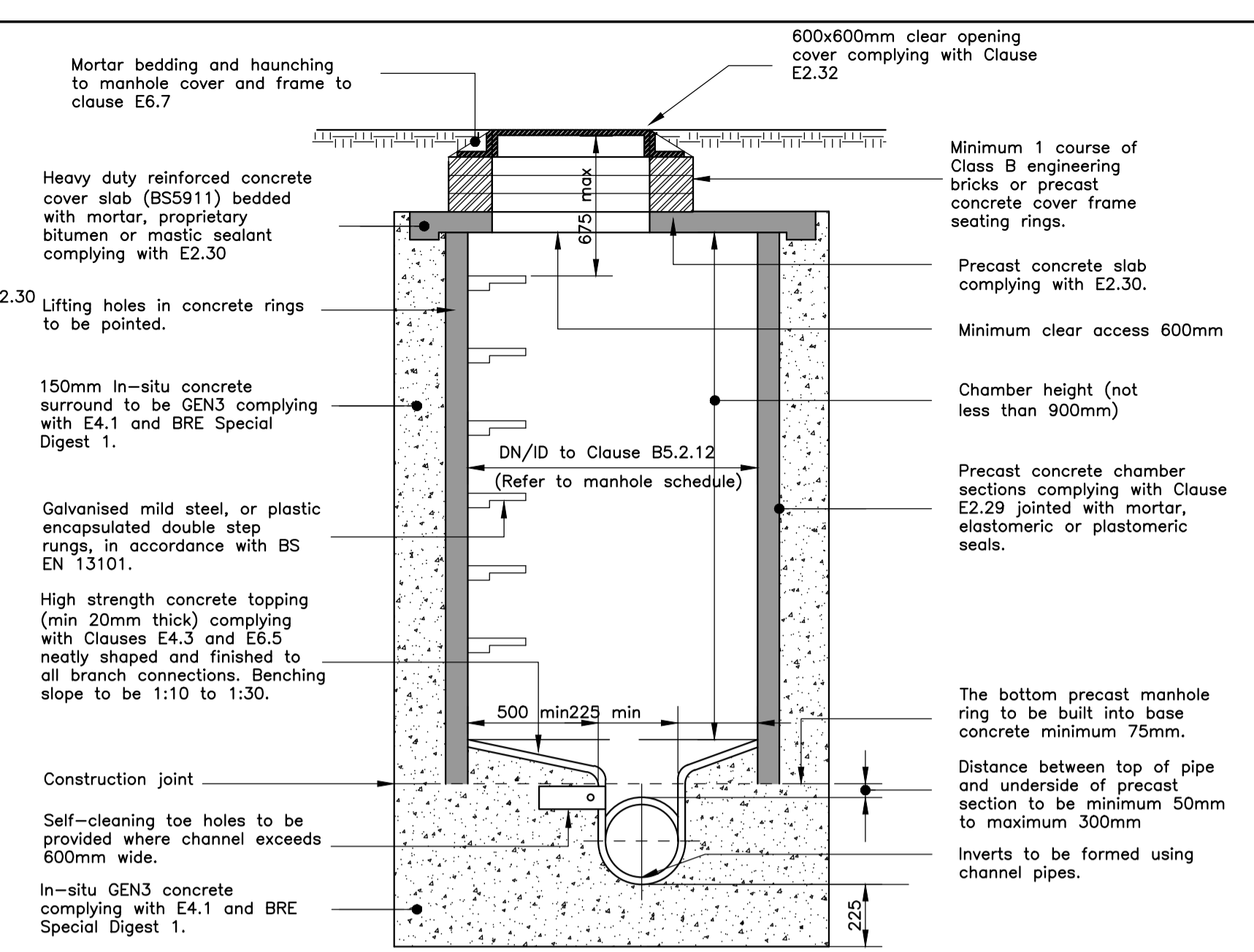
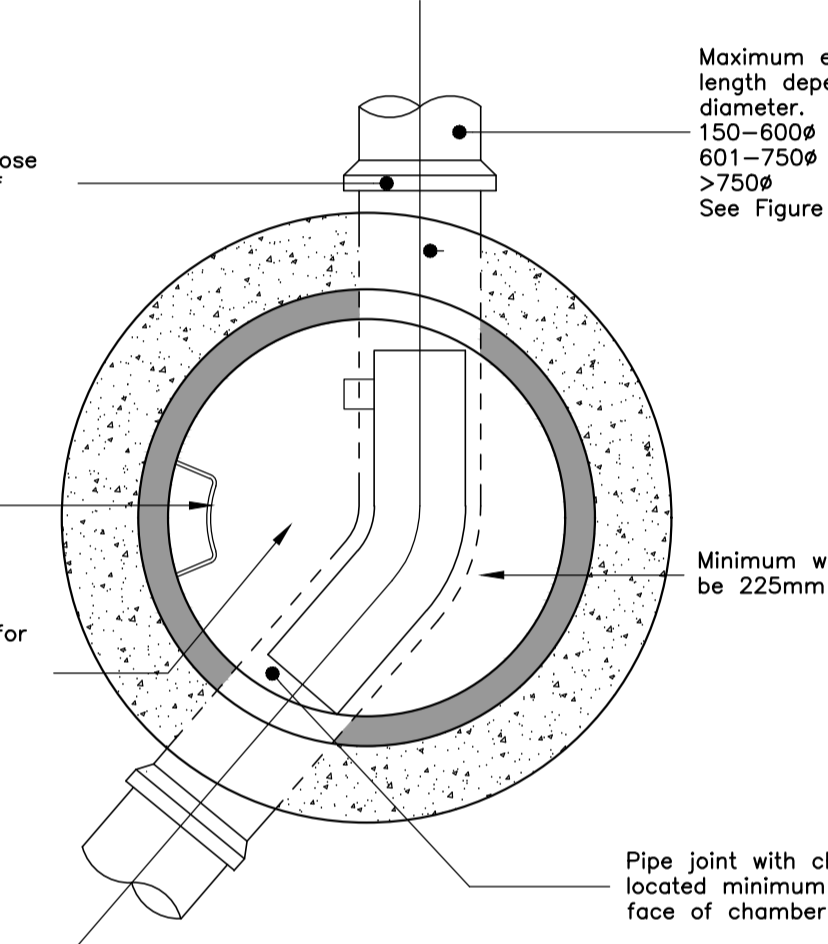


Typical Manhole Detail – Type A1/A2
(Depth 3.0–6.0m from Cover Level to Soffit Level)

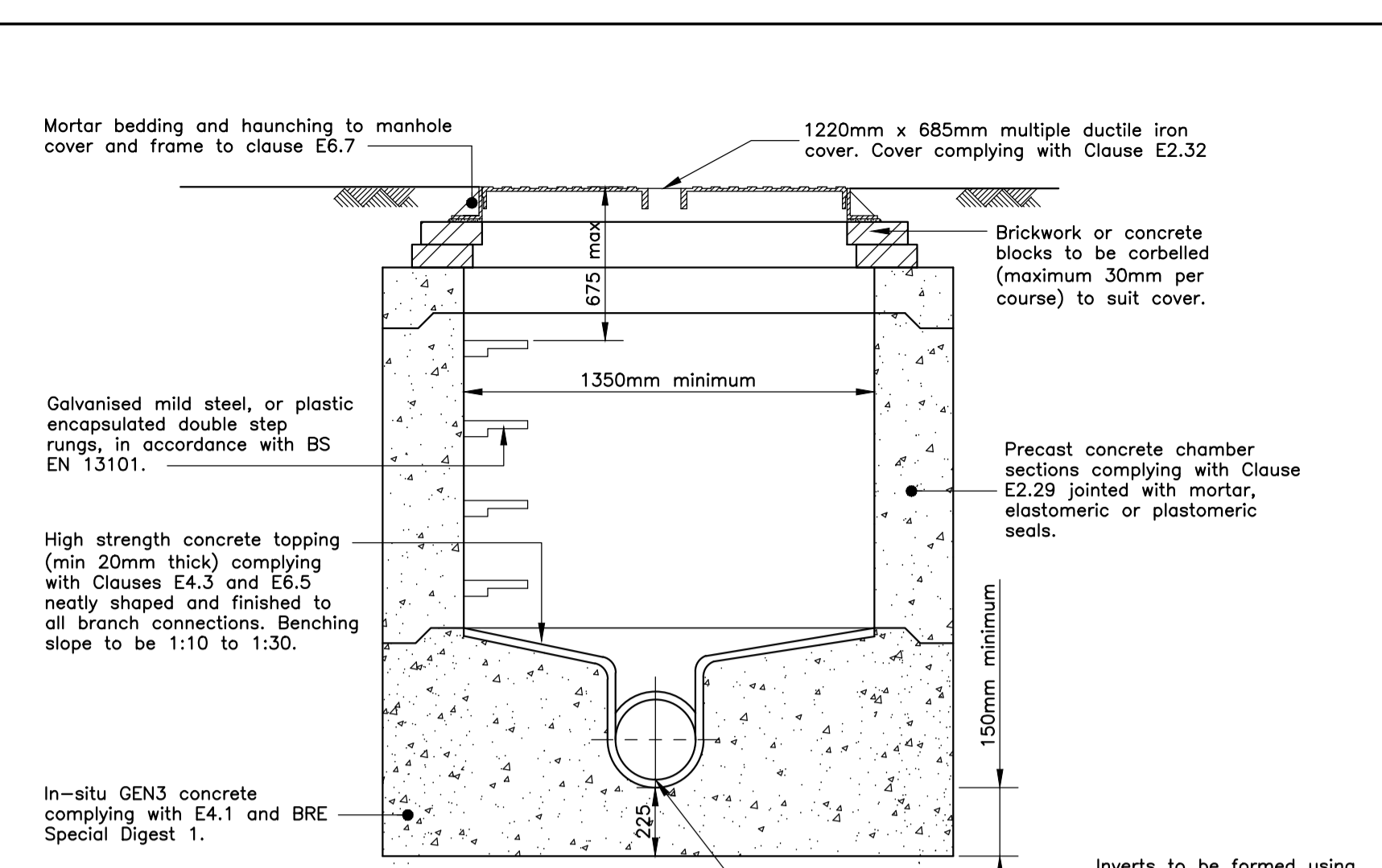
1:20



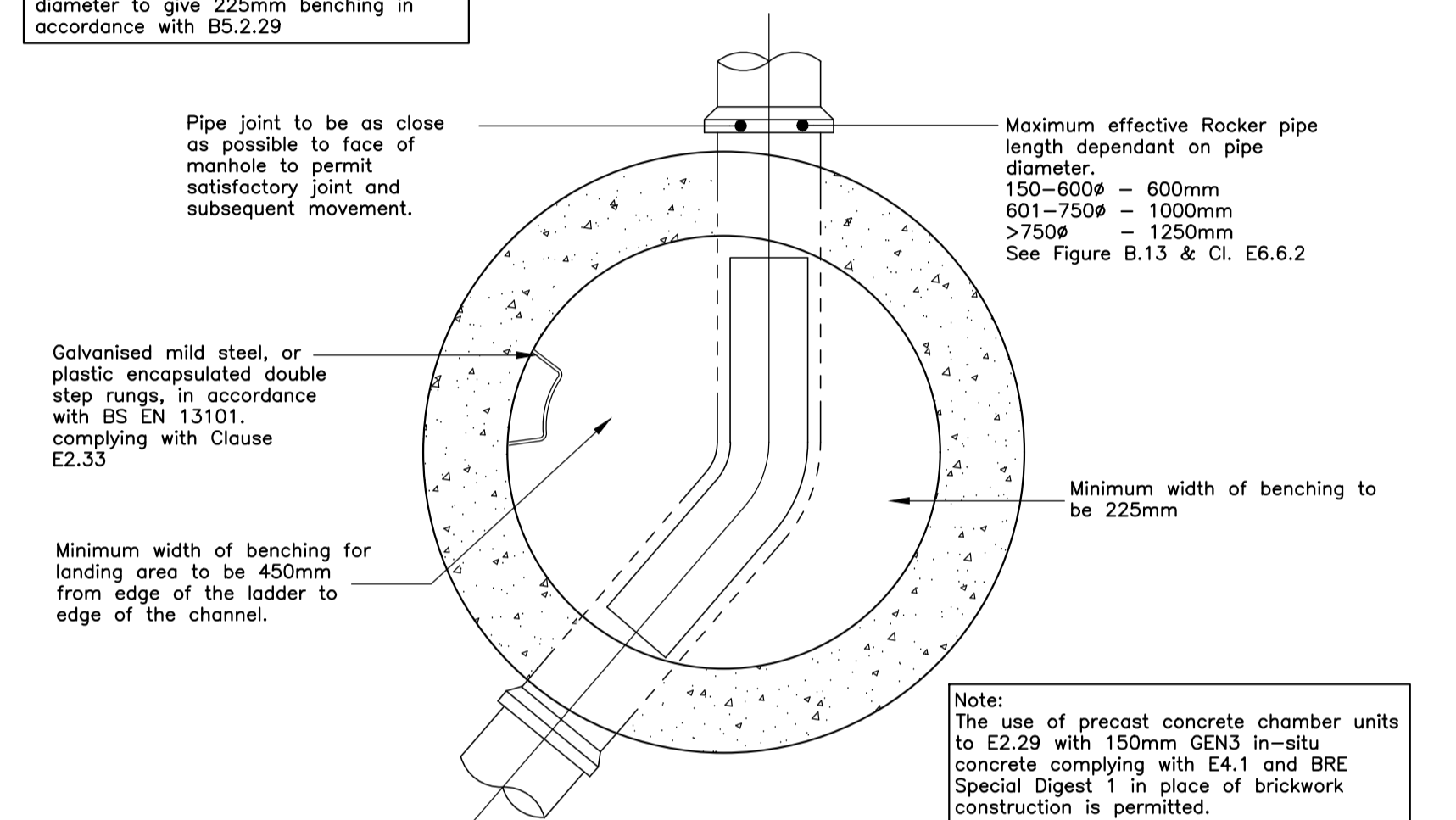
Manhole Type B
1:20



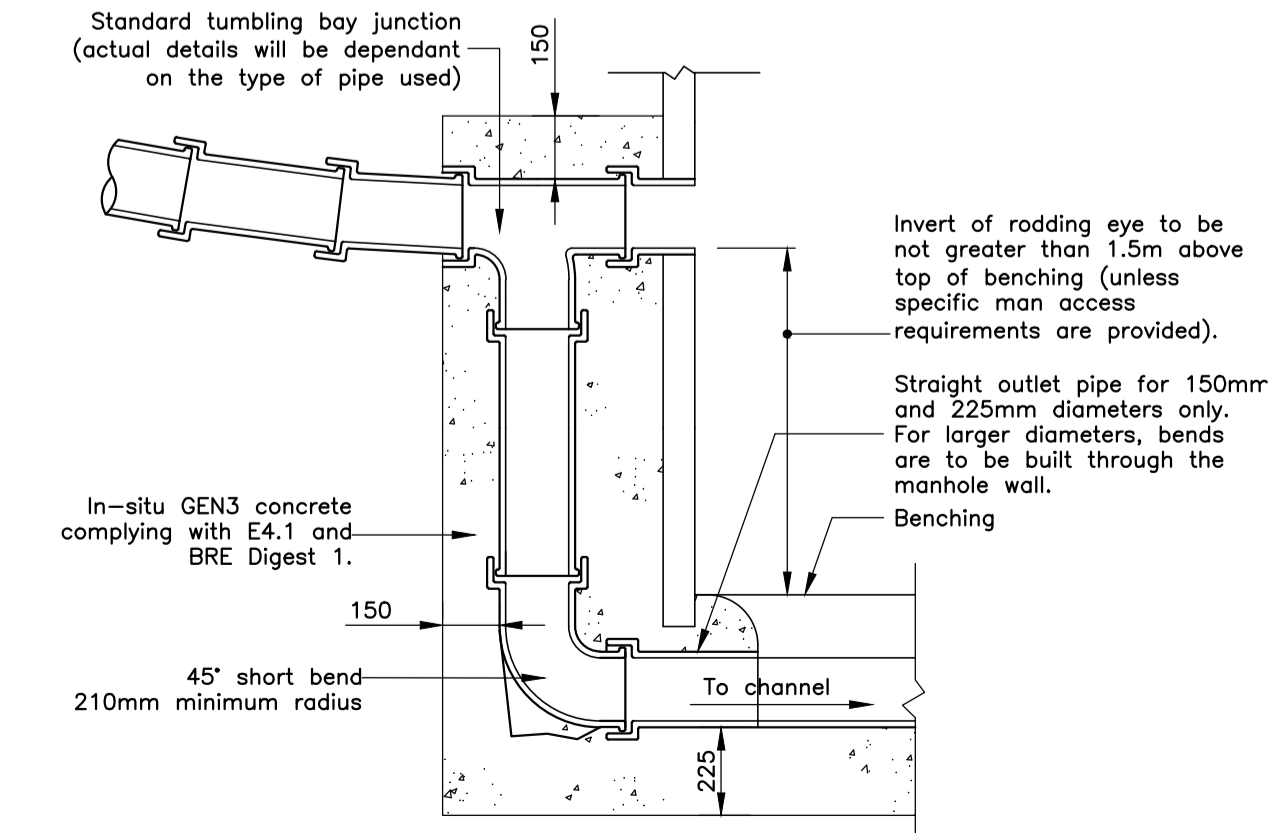
Manhole Type B – Plan
(Depth 1.5–3.0m from Cover Level to Soffit Level)



Manhole Type C
1:20



Manhole Type C – Plan
(Depth <1.5m from Cover Level to Soffit Level)



Typical Vertical Backdrop Detail
NTS

THIS DRAWING IS COPYRIGHT AND MUST NOT BE REPRODUCED IN WHOLE OR PART WITHOUT WRITTEN AUTHORITY

GENERAL NOTES

- Notes:
- This drawing shall be read in conjunction with all relevant engineers drawings. Any discrepancies found between information shown on this or any other drawing shall be Reported to the Walkers Associates engineer immediately and prior to works commencing on site.
 - All adoptable drainage works shall be undertaken strictly in accordance with Design Construction & Guidance specifications.
 - Type A granular bedding shall consist of 14mm single sized pea shingle to TABLE 1 of BS 882 part 2 1973.
 - Selected fill type B shall consist of uniform readily compactable material free from tree roots, vegetable matter, building rubbish and frozen soil and excluding clay lumps retained on a 75mm sieve and stones larger than the maximum size permitted on any adjacent type a bedding material.
 - Where concrete bed and surround is specified joint filler should be provided AT every joint. The filler may be expanded polystyrene 25mm thick or flexcell cut to the shape of the bed and surrounded and such that the ingress of concrete into the pipe is prevented.
 - To allow for possible differential movement a flexible joint must be incorporated in each section of pipeline within 150mm of where it enters a building or connects with a manhole, wall or other structure— see manufacturers instructions
 - All pipework generally to be bedded as follows
 - (i) Under vehicular areas where cover is less than 900mm under pedestrian areas where cover is less than 600mm } concrete bed and surround.
 - (ii) Under vehicular areas, pedestrian areas where depths given in (i) are exceeded; } class S bedding.
 - All private pipework shall be either vitrified clay, concrete or UPVC to BS 65, 5911 and BS EN 1401 respectively
 - All private drainage beneath adoptable carriageway shall be vitrified clay extra strength and with concrete bed and surround should cover depth be less than 1.2m.
 - All concrete at or below ground level on site shall be able to withstand class 2 sulphate concentrations in accordance with BRE digest 363
 - SVPs that have fallen vertically for more than 3 storeys should have a 750mm distance between invert of last connection and invert of the bend.

REV	DATE	AMENDMENT	BY	CHKD

STATUS **PLANNING**

PROJECT
Burgess Hill
Northern Arc
Phase 1C
 CLIENT



DRAWING
Adoptable Drainage
Construction Details
Sheet 1

DATE	DRAWN BY	REVISION
05/06/2025	AB	

SCALES (@A1) - CHECKED BY LW P01
 WALKERS JOB NUMBER 7714

DRG NO.
BUR-WAC-ZZZ-00-D-C-20004



Walker Associates Consulting Limited
 Structural and Civil Engineers
 13 Capricorn Centre
 Cranes Farm Road
 Basildon, Essex
 SS14 3JF
 01268 530 500
 walker-associates.co.uk