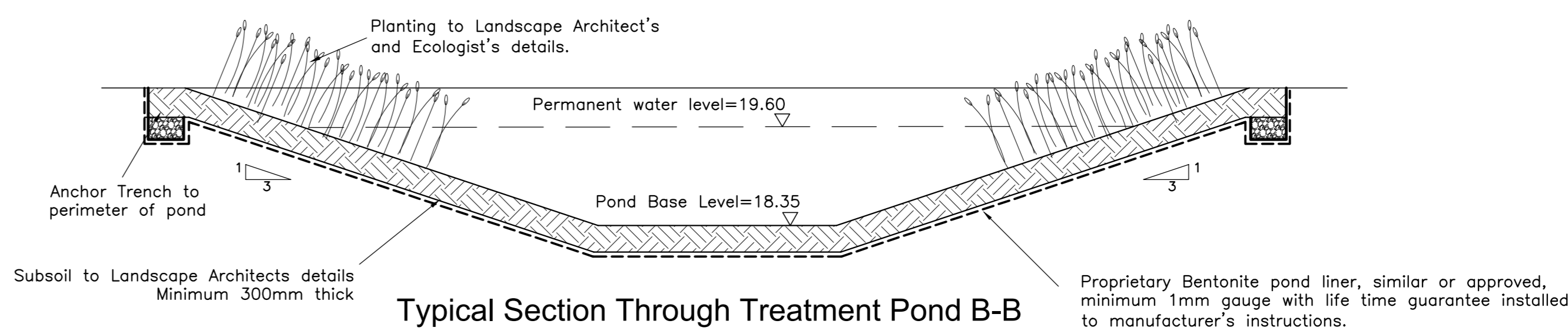
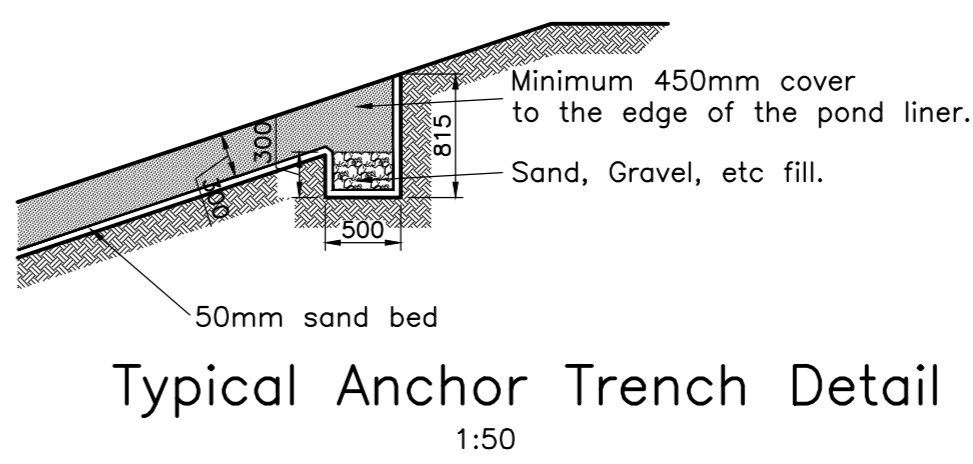


Typical Section Through Treatment Pond A-A  
1:50



Typical Section Through Treatment Pond B-B  
1:50

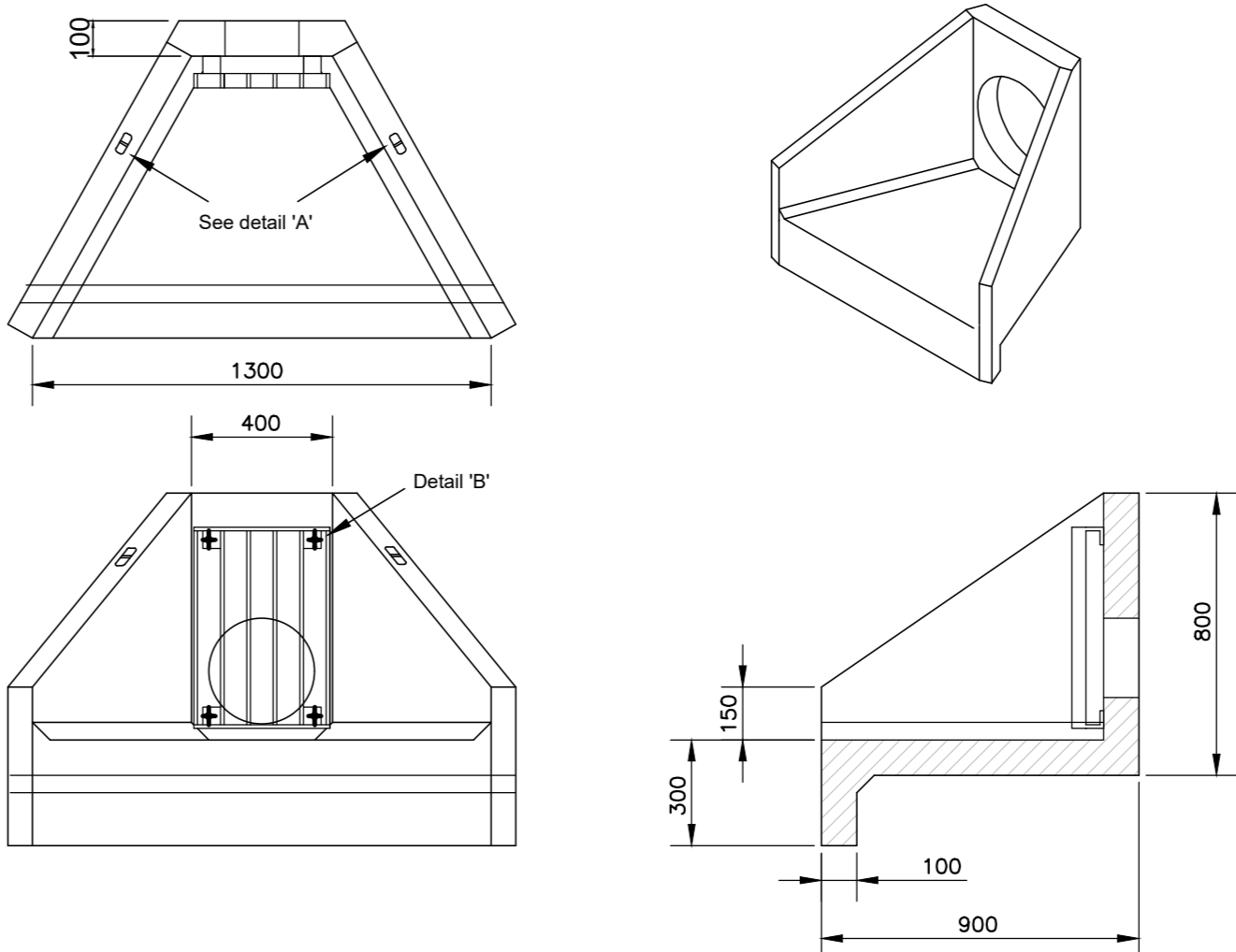


**H3C Specification Information**

- Opening in back all cast to suit outside diameter of the pipework
- Invert level of pipe can be set to your specification
- H3C suitable for pipework up to 300mm ID twin wall or clay / 225mm ID concrete

**Close Coupled Gate Specification Information**

- Grating manufactured from 40 x 10 flat at 75mm centres with 50 x 50 angle mounting points
- Unit fully welded then hot dip galvanised

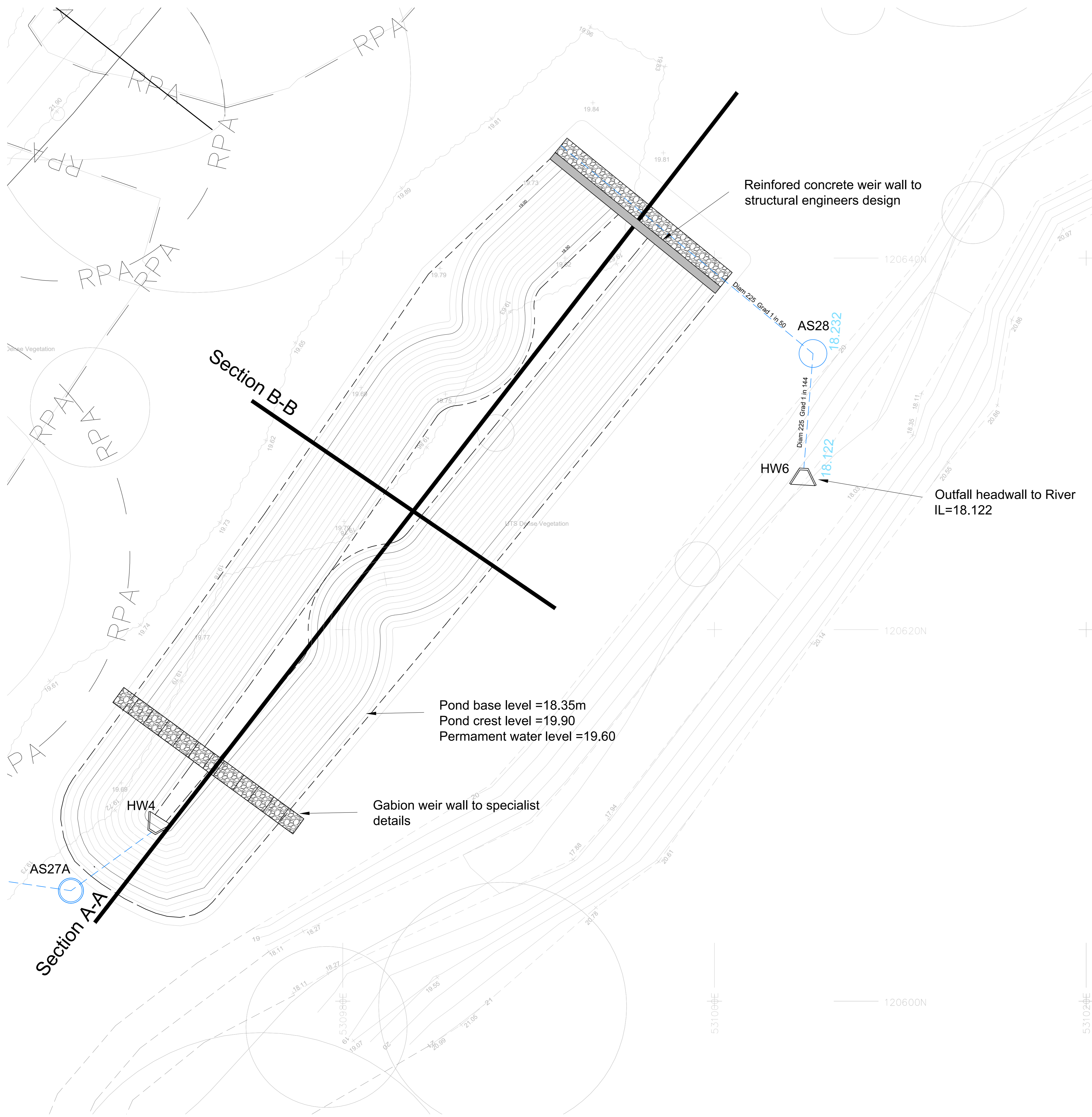


**Althon H3C Headwall Installation**

Units should be bedded on minimum 100mm of semi-dry concrete. Set the headwall level or with a slight fall 1:50 from pipe to spill mouth. For full detailed installation instructions contact ALTHON Ltd, 01603 488700

Material: Reinforced concrete  
Weight approximately 540kg  
All dimensions in mm

Althon H3C Headwall Detail  
1:20



THIS DRAWING IS COPYRIGHT AND MUST NOT BE REPRODUCED IN WHOLE OR PART WITHOUT WRITTEN AUTHORITY

**GENERAL NOTES**

REV DATE AMENDMENT BY CHKD

STATUS Planning

PROJECT  
Burgess Hill  
Northern Arc  
Phase 1C  
CLIENT

DRAWING  
Water Quality Pond  
WQ02 Details

DATE 30.05.25 DRAWN BY AB REVISION  
SCALES (@A1) - AS CHECKED BY LW P01  
WALKERS JOB NUMBER 7714

DRG NO.  
BUR-WAC-XX-ZZZ-D-C-20002

Walker Associates Consulting Limited  
Structural and Civil Engineers  
211 Cuckmere Centre  
Cuckmere Farm Road  
Burgess Hill  
W Sussex  
BN24 9JF  
01268 530 500  
walker-associates.co.uk