



Neighbourhood Green Link

The Neighbourhood Green Link is a continuation of the pedestrian cycle way from the secondary school through the Bellway Phase 1B development. In Phase 1C the route begins at the Green Spoke with a tree-lined street, continuing through the Northern Courtyard and Neighbourhood Square towards the primary school.

- 1 3m cycle footway
- 2 Green Spoke
- 3 Bellway Phase 1B
- 4 Homes fronting open space
- 5 Gables and dormers reinforce urban character
- 6 Tree-planting within wide verges
- 7 Northern Courtyard



CHARACTER

Neighbourhood Green Link





Neighbourhood Green Link Landscape Character



- The Green Link connects the Neighbourhood Square, via the Northern Courtyard towards the adjacent Bellway site to the north and forms a key pedestrian connection through the site.
- The route is defined by a shared surface to allow for pedestrian priority, one material across the area so it reads as one space. Wide verges of avenue tree planting will create a formal character on either side of the route and a separate 3m cycle/footway.
- The space will read as one through the choice of materials, the central verge of trees will create a formal avenue and also lends itself to separating the area of car movement with the cycle/footway space.
- Shared surfaces will be block paving to define feature spaces and raised tables at key junctions.
- As part of the drainage proposals parking bays where appropriate will be permeable block paving (Refer to Drainage Strategy for further details).
- The properties will be set back from the road, with boundary hedgerow and shrub planting defining the property boundaries.



1
Bellway scheme and landscaped Green Spoke



2
Tree-lined route from neighbourhood square



3
Formal avenue with street trees and gable-fronted homes



4
Crossing square promoting pedestrian and cyclist priority



KEY

- Site Boundary
- Proposed Tree Planting
- Shared Surface For Green Link (Block Paving, Herringbone)
- Block Paving for Private Driveways
- Proposed Hedgerow and Shrub Planting to Residential Frontage
- Proposed tree planting within wide verges on either side of Green Link to create a formal avenue
- Proposed Seating

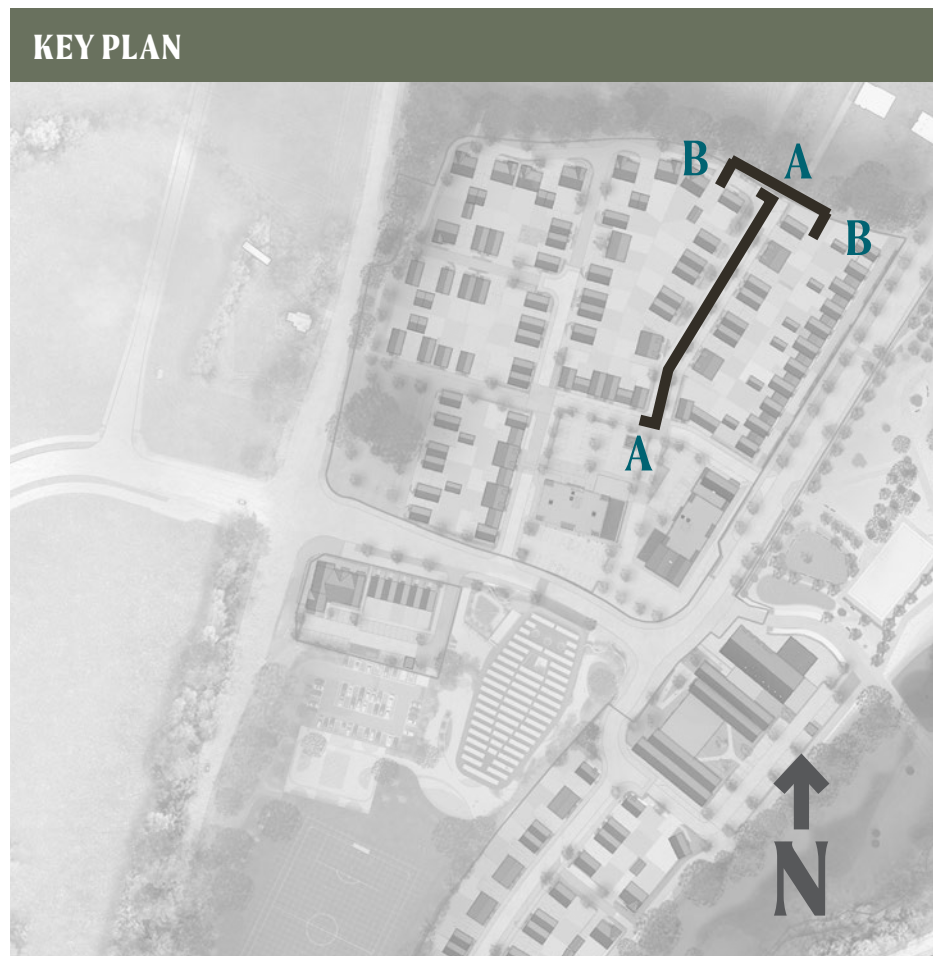
Neighbourhood Green Link Street Scenes



Section A



Section B





Eastern Park Frontage

The Eastern Park Frontage has been designed to maximise activity and opportunity for social interaction along Brookleigh Avenue and guard against displaced and anti-social parking. The strong rhythm of 3 storey gable-fronted townhouses and playful pattern of red brick tones is memorable and distinctive with linking carports to form a continuous building line fronting parkland, as found at Kings Weald.

- 1 Shared cycleway and footpath has priority and is attractive with substantial planting to each side which will encourage active travel
- 2 Well -landscaped threshold with defined public, private and semi-private areas and providing safe buffer between front doors and EBLR/ cycle way
- 3 Hedges to define public and private spaces, helping to create a characterful and biodiverse street
- 4 Continuous rhythm of 3 storey gable-fronted townhouses
- 5 Car ports link the townhouses enhancing the strong frontage.
- 6 Parking in between homes is practical for day-to-day life and creates opportunities for social interaction.
- 7 100% activity focussed on front doors as primary entrances ensuring an active frontage
- 8 Large street trees, within 4.1m green verge, define and enclose the EBLR



Eastern Park Frontage

