





5

Character

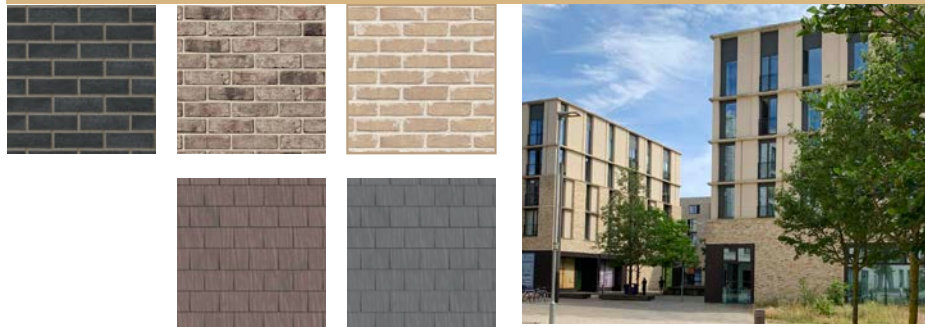
CHARACTER

Character Areas

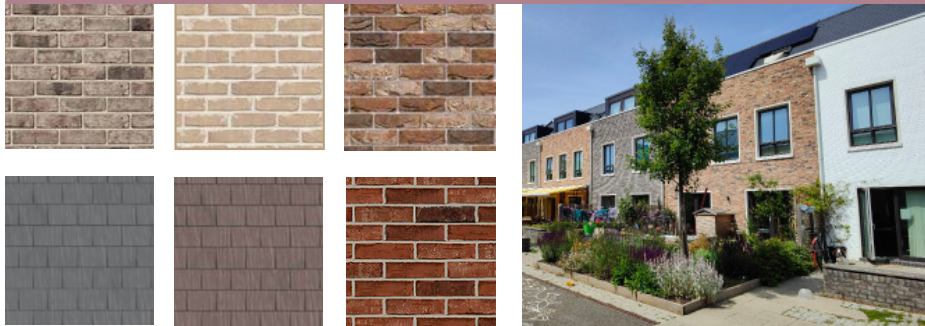
ARRIVAL



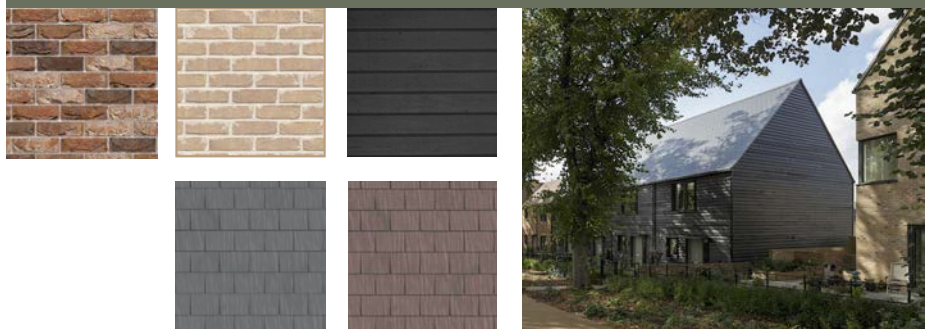
NEIGHBOURHOOD CENTRE



STREETS



GREEN EDGE



CHARACTER

Site Journey

This chapter is structured as a journey through the distinct areas within the Eastern Neighbourhood of Brookleigh, highlighting the well defined street and spaces, memorable character and integration with the wider natural surroundings.





CHARACTER

Arrival Green Gateway

The entrance to the Eastern Neighbourhood from the west is marked by a formal green, lined with 3-storey townhouses and an apartment block, designed around celebrating two mature oak trees. The trees form a significant feature, visible along Isaac Lane they will be a focal point and create a welcoming environment to the entrance to the neighbourhood. Areas for seating, signage, information boards and informal play elements that will form part of a wider provision of informal play opportunities will be provided across the site.

- 1 Existing Oak trees retained and celebrated
- 2 New Arrival Green formed around mature trees with attractive and biodiverse meadow grassland, a place to pause with seating and information boards
- 3 Corner apartment building with balconies and feature gables designed to provide articulation and activation along both Issac's Lane and Brookleigh Avenue (EBLR)
- 4 Gable-fronted townhouses
- 5 Rear parking courtyard with natural surveillance from apartment building entrance and balconies, screened from Issac's Lane with a brick wall, landscaping and street trees
- 6 Corner townhouses with side fenestration and brick boundary walls
- 7 Boundary planting and street trees, maintained by management company
- 8 Green Super Highway
- 9 Green Edge footpath parallel to Issac's Lane



CHARACTER

The Arrival Green Looking North-West from Isaac's Lane



Arrival Green Gateway Landscape Character

KEY PLAN



- The existing oak trees form a significant feature and are visible along Isaac Lane and will form a focal point and welcoming environment to the entrance to the site forming the setting of the arrival green.
- The arrival green is framed by the adjacent properties that front onto the central green.
- The space will be completed by additional tree planting to add seasonal interest and allow for the long term succession of the existing oak trees.
- Areas for seating, signage, information boards and informal play elements that will form part of a wider provision of informal play opportunities will be provided across the site.
- Hedgerow and tree planting will soften the boundaries to properties fronting onto the open space and on the approach along the Isaac Lane frontage.
- Shared surfaces will be block paving to define feature spaces and raised tables at key junctions.
- As part of the drainage proposals parking bays where appropriate will be permeable block paving (Refer to Drainage Strategy for further details).
- The proposed green infrastructure will break up the extent of the built form and parking in this location.



KEY

- Site Boundary
- Existing Trees to be Retained
- Proposed Trees
- Proposed Amenity Grassland
- Proposed Meadow Grassland
- Proposed Footpaths (Mown Paths)
- Proposed Hedgerow
- Proposed Seating
- Proposed Information / Interpretation Boards
- Proposed Knee Rails
- Proposed Footpaths
- Proposed Hedgerow and Shrub Planting to Residential Frontages
- Informal Play
- Proposed Footpaths/Shared Surface (Block Paving, Herringbone)

Arrival Green Gateway Street Scenes



AA - Section through Isaac's Lane looking east towards Eastern Neighbourhood Centre showing three-storey homes forming an Arrival Green which celebrates the mature oak trees



BB - Section through Brookleigh Avenue looking south showing apartment building and terraced homes with materiality transitioning towards Neighbourhood Centre

KEY PLAN

