

Katy Bourne OBE
Sussex Police & Crime Commissioner

Tel: 01273 481561
Email: pcc@sussex-pcc.gov.uk
www.sussex-pcc.gov.uk

The Office of the
Sussex Police &
Crime Commissioner
Sackville House
Brooks Close, Lewes
East Sussex, BN7 2FZ



**Sussex
Police & Crime
Commissioner**

Steven King
Planning Department
Mid Sussex District Council
Oaklands Road
Haywards Heath
West Sussex
RH16 1SS

Jane Thatcher
Joint Commercial Planning Manager
Sussex Police and Surrey Police

Estate Department
L Block
Sussex Police Headquarters
Church Lane
Lewes
East Sussex
BN7 2DZ
Tel: 07703453054
Email: jane.thatcher@sussex.police.uk

Our Ref: 26/MS/0303
Your Ref: DM/26/0303

20th February 2026

Dear Mr King,

DM/26/0303 – Outline planning application with all matters reserved except for access for the demolition of an existing commercial building and the erection of up to 260 dwellings, up to 1,700sqm of employment floorspace E(c)(iii), E(g)(i)(ii)(iii), car parking, landscaping, open space, and associated development works, with access from Copthorne Bank and Borers Arms Road.

I write on behalf of the Office for the Police and Crime Commissioner (PCC) for Sussex concerning outline application DM/26/0303 for the demolition of an existing commercial building and the erection of up to 260 dwellings, up to 1,700sqm of employment floorspace E(c)(iii), E(g)(i)(ii)(iii), car parking, landscaping, open space, and associated development works, with access from Copthorne Bank and Borers Arms Road at Land North of Borers Arms Road, Copthorne, West Sussex, RH10 3LH.

Sussex & Surrey Police are an active member of the National Police Estates Group (NPEG) and now act as one on all infrastructure and town planning related matters across their combined geographical area. Our approach to Section 106 requests is in accordance with national best practice recommended by the National Police Chief's Council (NPCC). The approach now adopted has been tested at public inquiries nationally and found to be in accordance with the statutory CIL tests.

The large numbers of housing being developed across Sussex and more specifically within the East Grinstead area will place a significant additional demand upon our police service. These impacts will be demonstrated in this submission and the necessity of investment in additional policing services is a key planning consideration in determination of this planning application.

This development will place permanent, on-going demands on Sussex Police which cannot be fully shouldered by direct taxation. Like many other public services, policing is not fully funded via public taxation. This request outlines a number of the capital costs that will be incurred by Sussex Police to enable safe policing of this development.



All of the infrastructure outlined in this funding request has been found compliant with regulation 122 of the Community Infrastructure Levy (CIL) and are considered directly related to the development in scale and kind and necessary to make the development acceptable in planning terms.

The application site comprises a number of agricultural fields located directly to the north of the built-up area of Copthorne, that has a negligible impact on policing. Once developed this site will create an additional demand upon the Police Service that does not currently exist.

The Police will need to recruit additional staff and officers and equip them. Investment into Automatic Number-Plate Recognition (ANPR) cameras and speed control measures will also be required. The development will also require the services of a police vehicle. Staff and officers will also need to be accommodated in a premises that will enable them to serve the development. This request is proportionate to the size of the development and is intended to pay for the initial, additional costs resulting directly from the development for those areas where the police do not have existing capacity. The request also explains how the police service is funded, outlines National Planning Policy support for policing contributions and references numerous appeal decisions where police requests for developer contributions have been upheld.

Police forces nationally, are not in a position to support major development of the scale now being proposed for many of the nation's towns and cities without the support from the planning system. If we are obliged to do so using our own resources only, then it is reasonable to conclude that there will be a serious risk of service degradation as existing coverage is stretched to encompass the new development and associated population growth. This is already evident across Sussex due to the significant numbers of housing being developed and clearly shown by the increasing numbers of recorded crimes in Sussex over the last year. Our force must ensure that development growth is supported by the infrastructure necessary to guarantee the safety and security of the new communities.

It is the responsibility of the PCC to ensure our Chief Constable has sufficient financial support to deliver a high level of policing to the residents of Sussex. Our Office continues to actively seek financial contributions via Section 106 agreements and CIL funds to support our capital program. This will enable Sussex Police to deliver the highest possible service to ensure the protection of the communities that we serve. In line with many other police forces Sussex & Surrey Police have updated our methodology for infrastructure requests to ensure our representations are transparent and provide an up to date, accurate reflection of our current capacity in the district.

Our new methodology has been developed through a joint partnership with Leicestershire, Thames Valley, West Mercia, Warwickshire and other active members of the National Police Estates Group (NPEG). This methodology was considered Community Infrastructure Levy REG122 compliant by Mr Justice Green in the case of *Jelson v SoSCLG and Hinckley and Bosworth Council* [2016] CO/2673/2016 (**Appendix 1**). In addition, there are a significant number of recent appeal decisions and High Court judgments supporting both the principle of Police contributions and our methodology (see attached appendices). The principle of developer contributions towards Sussex and Surrey Police has recently (May 2024) been upheld by the Secretary of State in the allowed appeal relating to new 1,730 dwellings at Land at the former Wisley Airfield, Hatch Lane, Ockham, Surrey (Appeal ref: APP/Y3615/W/23/3320175 – **Appendix 2**).



I will go into further detail on the various items of infrastructure and provide evidence of their compliance with Regulation 122 tests.

1. Police Funding and Development Growth

A primary issue for Sussex Police is to ensure that new development, like that proposed by application DM/26/0303 makes adequate provision for the future policing needs that it will generate. Like other public services, Sussex Police's primary funding is insufficient to be able to add capital infrastructures to support new development when and wherever this occurs. Furthermore, there are no bespoke capital funding regimes e.g. the Health Lift to provide capital either. The police therefore fund capital infrastructure by borrowing. However, in a service where most of the budget is staffing related, the Sussex Police capital programme can only be used to overcome pressing issues with existing facilities, or to re-provide essential facilities like vehicles once these can no longer be used.

Sussex Police endeavour to use our existing funds as far as they stretch to meet the demands of an expanding population and overwhelmingly for revenue purposes. However, it is the limit of these funds which necessitates the need to seek additional contributions via Section 106 requests and the CIL. This situation also prevails in other public services seeking contributions and there is nothing different here as far as policing is concerned. What is different is that the police do not enjoy capital income from the usual taxation sources. This evidences that the police do not make requests where other funds are available to meet their needs.

The reality of this financial situation is a major factor in our Forces planning and alignment with plans for growth in that whilst Sussex Police can plan using their revenue resources to meet their on-going, and to a limited extent, additional revenue costs these do not stretch to fund necessary additional investment in their infrastructures.

Sussex Police will continue to engage with Local Planning Authorities to ensure crime prevention is referenced within new local plan documents and provide crime prevention design advice to minimise the opportunities for crime within new development. Ensuring new development takes full consideration of crime prevention and the provision of adequate infrastructure to support policing is clearly outlined within the National Planning Policy Framework (NPPF, December 2024), relevant sections of the Planning Practice Guidance (PPG) and Section 17 of the Crime and Disorder Act 1998 (as amended).

Paragraph 20 ['Plan-Making'] of the NPPF states 'Strategic Policies should set out an overall strategy for the pattern, scale and design quality of places and make sufficient provision for: infrastructure for transport, telecommunications, security...'. In addition, paragraph 96 of the NPPF ['Promoting healthy and Safe Communities'] states that 'Planning policies and decisions should aim to achieve healthy, inclusive and safe places which are safe and accessible, so that crime and disorder, and the fear of crime, do not undermine the quality of life or community cohesion...'.

Furthermore, paragraph 101 of the NPPF states '*To ensure faster delivery of other public service infrastructure such as...blue light...local planning authorities should also work proactively and positively with promoters, delivery partners and statutory bodies to plan for required facilities and resolve key planning issues before applications are submitted. Significant weight should be placed on the importance of new, expanded or upgraded public service infrastructure when considering proposals for development.*'

Paragraph 102 states '*Planning Policies and decisions should promote public safety and take into account wider security and defence requirements by, anticipating and*



addressing possible malicious threats and other hazards (whether natural or man-made, especially in locations where large numbers of people are expected to congregate. Policies for relevant areas (such as town centre and regeneration frameworks), and the layout and design of developments, should be informed by the most up-to-date information available from the police and other agencies about the nature and potential threats and their implications. This includes appropriate and proportionate steps that can be taken to reduce vulnerability, increase resilience and ensure public safety and security. The safety of children and other vulnerable users in proximity to open water, railways and other potential hazards should be considered in planning and assessing proposals for development.'

In the support of this request the following information is provided by Sajaki Rai, Accountant at Sussex Police and is a detailed commentary on Sussex Police's budget, which underpins the above statements:

National funding

Sussex Police receives 58% of its funding from central government and 42% from local taxation. Central government funding comprises of the Home Office Core Funding Settlement, the Department for Communities and Local Government (DCLG) Formula Funding, (together these are referred to as Central Government Grant or CGG for the purposes of this submission) and Legacy Council Tax Grants (LCTG). LCTG are fixed and some elements of this are time limited, therefore, LCTG are not affected by variations in the funding formula.

The distribution of CGG is calculated by the Police Relative Needs Formula. This Police Funding Formula divides up how much money each police force receives from the overall central government funds. It takes into account a number of factors to assess demand in each area.

The first stage of the formula is to divide funds between the different activities that the police undertake. These activities, or workloads, can be broken down into five key areas (Crime, Incidents, Traffic, Fear of Crime, and Special Events).

A portion of total funding is also distributed according to population sparsity, to address the specific pressure created by the need to police rural areas.

The second stage is to divide funding for each of these workloads between the 43 local policing bodies of England and Wales. To do this, 'workload indicators' are calculated to estimate how much work each Police Force is expected to have in each of the key area compared to other forces. These estimates are calculated by socio-economic and demographic indicators that are correlated with each workload. Indicators of workload are used rather than data recorded crime levels to account for known variations in recording practices, and the funding model has been designed to avoid creating any incentives for forces to manipulate figures.

The formula consists of a basic amount per resident and a basic amount for special events, and top ups for the five key areas, sparsity, and area costs (which takes account for regional differences in costs).

The top-ups etc. are weighted and use specific categories of population, rather than a straightforward population figure, to determine grant allocations, for examples specific categories includes the population of various benefits, long-term unemployed,



overcrowded households, hard pressed households, residents in terraced accommodation etc.

Whilst the funding formula is influenced through allocation of a basic amount per resident, this does not necessarily lead to an increase in CGG Grant to Sussex Police. Putting aside the time delays between recognising population growth and this being fed into the funding formula, the overall pot available to all forces the CGG is limited and in fact has declined over the last few years as part of the Government's fiscal policy. Therefore, changes in general population or the specific population do not increase the overall funding made available through CGG, rather they would affect the relative distribution of grant between forces.

For the 2023/2024 year there was an increase in the CGG despite the ongoing recruitment scheme known as 'Operation Uplift' across the UK. This funding was ring fenced for revenue expenditure on employing new police officers. However, it can be stated with certainty that, this funding would be fully utilised in contributing to additional salary, revenue and maintenance costs (i.e. not capital items and not what is claimed here). This funding, therefore, would not be available to fund the infrastructure costs that are essential to support the proposed development growth.

To achieve the Operation Uplift Performance Grant, the Force is required to reach its target headcount in September '24 and '25 March. In addition, Sussex had approval from the Home Office to secure a grant of £48k per officer in 2024/25 to exceed the target by 60 officers. The central government uplift performance grant for 2025/26 has been reduced to £7.5m (2024/25 £9.1m). For Sussex to achieve the Operation Uplift Performance Grant the Force was required to reach its target headcount in September '24 and March '25. Further Op Uplift grant was provided to Sussex to recruit a further 39 Officers above the baseline for 2023/24. This revised target will be met for 2024/25 which ensures the Op Uplift Performance Grant will be paid in full.

The time horizon of our financial planning should also not be determined by the time horizon of financial support from central government. In July 2024 the incoming Chancellor of the Exchequer announced a multi-year spending review to conclude in spring 2025 (SR2025). They also announced changes to the Charter for Budget Responsibility to require spending reviews to be held every two calendar years, covering a spending period of at least three years, saying that this would ensure there will always be up to date medium-term departmental spending plans. The Chancellor indicated that the decision-making in SR2025 would reflect the government's 'mission-led' approach. She further announced that the government would establish a new Office for Value for Money (OVfM) to help it "put value for money at the heart of decision-making" and to recommend system reforms. Leading up to the SR2025 the government has issued a settlement for just the 2025/26 financial year.

The greater the uncertainty about future central government policy then the greater the need to demonstrate the PCC entity's long-term financial resilience, given the risks attached to its core funding.

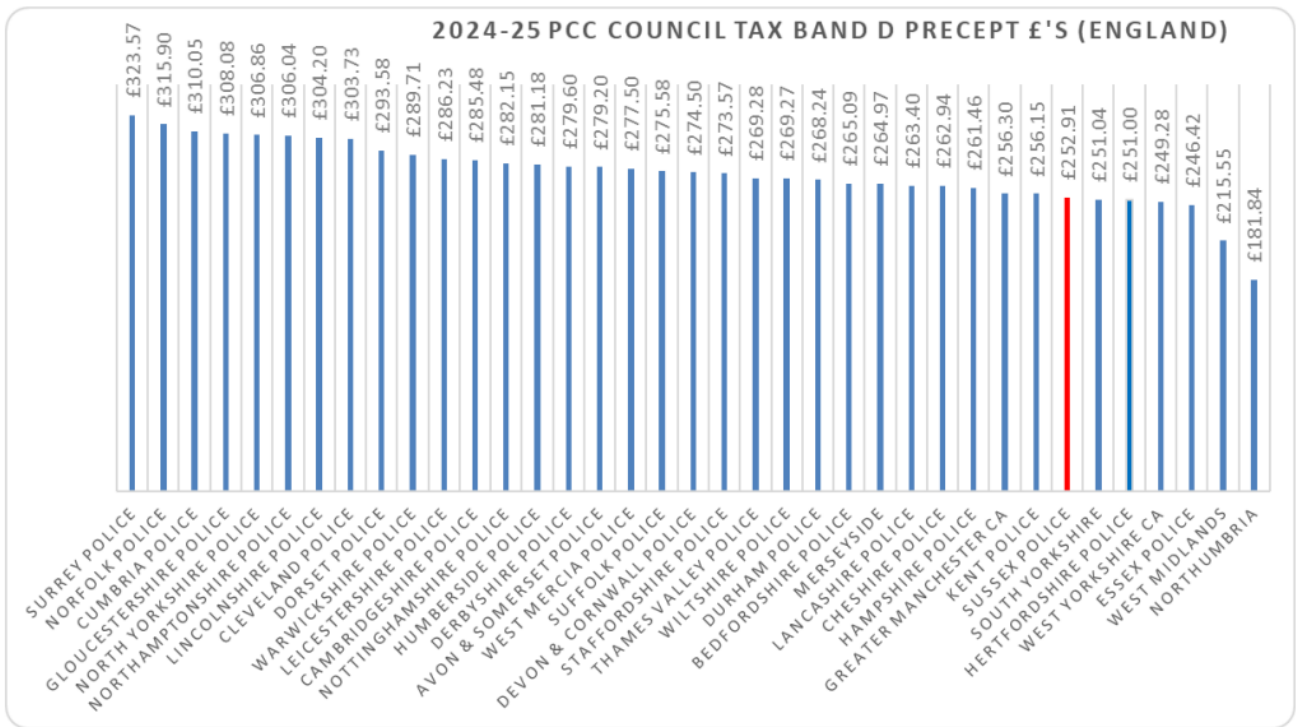
Local funding

Sussex Police (precepting body) places a demand or precept on the district and borough councils in its area (billing authorities) for a sum of money to be raised through the council tax. The amount to be raised is divided by the Council Tax Base (CTB) or number of households to arrive at an average Band D council tax, from which all other bands of council tax are determined. The growth in the council tax or the amount each household



pays is decided by the Police and Crime Commissioner (PCC), having regard to the DCLG rules concerning the need to hold a local referendum where the proposed spending increase in the precept is above a prescribed threshold, £14 (2025/2026) per Band D property to maintain real terms funding.

The council tax precept for Sussex was one of the lowest (31 out of 37) of English policing bodies during 2024/25 at £252.91 per annum for a Band D property. The table below shows the range of precepts by policing body in England. The median was £274.50.



Sussex PCC MTFS – page 43

There remains potential for the council tax yield to increase simply through a growth in the CTB. However, it should be noted that the CTB is reduced for discounts and exemptions provided under the Local Council Tax Benefit Scheme (LCTBS) and may also be affected by collection rates. Therefore, a growth in households might not lead to a growth in council tax yield where those households benefit under the LCTBS.

Even with the £14 increase to the precept, expenditure will still have to be reduced by £5.0m to balance the budget in 2025/26. Plans are being progressed to mitigate the cost pressures already identified and forecast predominantly through the Transformation programme, and these are set out in the Medium Term Financial Strategy (MTFS) 2025-2029.

Most importantly, the higher council tax precept will allow our PCC to retain and invest in our workforce and continue supporting our Local Policing Program (LPP). Key considerations driving the precept increase decision included:

- Public demand on police services is increasing exponentially;
- Criminal investigations are becoming increasingly complicated, with huge amounts of digital material to identify, secure and analyse, against an exacting threshold for prosecution;



- The public want to see investment in more visible, local policing, focusing on crimes like burglary and anti-social behaviour and they rightly want to feel safe on the roads, in public spaces and at night-time;
- The public also want to see improvements in the force's approach to public contact and more support to the 101 service;
- HMICFRS (Her Majesty's Inspectorate of Constabulary, Fire and Rescue Services) has recently acknowledged the public's concerns about changes to neighbourhood policing, and stressed the importance of community intelligence;
- And the PCC's consultations and correspondence with the public show that a majority of Sussex residents are prepared to support their police service through increased precept contributions.

Savings

Since 2010/11 Sussex Police have seen reductions to the grant funding provided by the Government to Policing Bodies in England and Wales. Sussex Police have worked hard to deliver savings and have made £109m of reductions and efficiencies to head towards balancing its books (source: Her Majesty's Inspectorate of Constabulary's (HMIC) Police Effectiveness, Efficiency and Legitimacy (PEEL) assessment and 2017/18 revenue budget).

The multi-year change programme continued to deliver complex transformation across Sussex Police during 2024/25. The savings will continue to be required. Savings of £5.0m are required in 2025/26 after the use of reserves to balance the budget and £24.3m in the following three years (MTFS). This is the 'budget gap' i.e. the difference between funding and the cost of policing which will need to be met by savings.

Capital Funding

The Government stopped providing an annual grant to support the capital and investment programme from 2022/23. However, specific capital grants may be issued for specific capital investment, for example, the Emergency Services Network.

For many years Sussex PCC has benefitted from substantial capital reserves, supported by capital receipts from the sale of operational buildings and assets or from revenue reserves assigned to capital investment. Most of these resources have now been utilised and as we move forward through the next 4 years and beyond, there is the necessity to fund through either Direct Revenue Funding (DRF) and external borrowing for specific projects. The capital financing approach remains to maximise the use of Capital Receipts to support the capital programme whilst maximising the overall benefit in underpinning the Revenue budget.

Local Authorities, including the PCC, can set their own borrowing levels based on their capital needs and their ability to pay for the borrowing. The levels will be set by using the indicators and factors set out in the Prudential Code. The borrowing costs are not supported by the Government so Sussex Police need to ensure they can fund the repayment costs. The Minimum Revenue Provision Statement sets out a prudent approach to the amount set aside for the repayment of debt. Borrowing is to be used to cover long life assets only.

Since there is no support from Government with Capital Grant, low reserve and as the pool of assets available for sale declines the financial support from these receipts diminishes, any local capital investment creates an additional financial burden on Sussex Police which will need to be funded through borrowing. With diminishing reserves and the



implications of borrowing such as high interest rate, both alternative funding mechanisms are inadvisable.

Conclusions on funding

Like many other public sector organisations, Sussex Police have seen a real terms reduction in grant funding in recent years, which has necessitated changes to the policing model. At the same time the demands placed on the police service increase, whilst the service must deal with the changing nature of crime at both the national and local level, for example, cybercrime, child sexual exploitation and terrorism are areas of particular concern. Additional funding granted towards policing will support and sustain local policing services to Sussex residents.

In conclusion, it remains necessary to secure Section 106 contributions or direct CIL funding for policing infrastructure, due to the direct link between the demand for policing services and the changes in the operational environment beyond Sussex Polices control i.e. housing growth and the subsequent and permanent impact it has upon policing.

Securing modest contributions means that the same level of service can be provided to residents of new development as it is to existing residents and without compromising frontline services. The consequence of no funding is that existing infrastructure will eventually become stretched to breaking point, and none of the communities we serve will received adequate policing.

Whilst national and local funding must continue to cover salary and maintenance costs, there would be insufficient funding to provide the infrastructure required for officers to carry out their jobs effectively, Sussex Police consider that these infrastructure costs arising directly as a result of the development proposed and that funding for the police under S106 or CIL is both necessary and justified.

2. Assessment and Request

Our Office have undertaken an assessment of the implications of growth and the delivery of housing upon the policing of Mid Sussex and in particular the areas of this district where new development is being directed towards. We have established that in order to maintain the current level of policing, developer contributions towards the provision of capital infrastructure will be required. This information is disclosed to secure essential developer contributions and is a fundamental requirement to the sound planning of the district. In the absence of developer contributions towards the provision of essential policing infrastructure, Sussex Police would raise **objection**, as the additional strain placed on our resources would have a negative impact on policing of both the development and force-wide policing implications within the district.

This submission will provide the most recent annual statistics for crime/incidents in Mid Sussex which will be compared to the number of existing households. This provides an incident per existing household (or person) within Mid Sussex which can then be used as the background to the various items of infrastructure outlined in this funding request.

Nationally, the Police Force ensure that we take regular legal advice and guidance from industry professionals on the applicability of NPPF tests relating to the application of Regulation 122 on our funding requests for S106 agreements and Infrastructure Development Plans. This included advice as to what is infrastructure which can be summarised as follows:



- The first point to note is that '*infrastructure*' is not a narrowly defined term. Section 216 of the Planning Act 2008 provides a list of "*infrastructure*" but is clear that that list is non-exhaustive. That fact is demonstrated by the use of the word "*includes*" prior to the list being set out.
- There is no difficulty in the proposition that contributions towards Police infrastructure can be within the definition of infrastructure for the purposes of the 2008 Act. In policy terms this is reinforced by the reference to security infrastructure in paragraph 20 of the National Planning Policy Framework (December 2023).
- Infrastructure is not limited to buildings and could include equipment such as vehicles, communications technology, and surveillance infrastructure such as CCTV and ANPR. Infrastructure could also include speed cameras/metres or Speed Indication Devices (SIDs) which are a mobile education tool for deployment by Neighbourhood Policing Teams at the roadside, displaying warning messages or speed to drivers.
- The Emergency and Rescue Service are now recognised as '*infrastructure*' (including facilities and equipment) in the Levelling Up and Regeneration Act 2023 (Schedule 12, Section 204N, para 3 (h)).

The submission set out below is based on the same methodology previously found sound by Planning Inspectors, the Secretary of State and the High Court and has been found sound. The costs included in this submission are sites specific costs which are envisaged to be secured via a Section 106 agreement. The significant costs relating to revenue will be met by local and national taxation.

3. Current Policing requirements in the District of Mid Sussex

Sussex Police's existing estate

At present, Neighbourhood policing in Mid Sussex is delivered from Burgess Hill, Haywards Heath and East Grinstead Police stations. Burgess Hill and Haywards Heath are the main operational bases for Neighbourhood Policing Teams (NPT) and Neighbourhood Response Teams (NRT) in the District. East Grinstead police station is our new drop-in office within the Chequer Meads Arts Centre.

Our office has undertaken a full capacity analysis of our sites across Sussex and identified police stations where we have issues with existing capacity and would therefore be unable to support additional officers and staff required due to population growth. This study shows that East Grinstead police office has existing capacity and could provide limited space to support additional staff or officers to mitigate against this development. This base supports front line policing and other neighbourhood policing roles which will be required to support this development.

Sussex Police's current policing requirements and projections

For the last year (2025) Sussex Police recorded 30,788 (an additional 2,285 incidents from 2024) incidents in the District of Mid Sussex.

To determine the current policing requirements per household or individual person an approximate estimation of the number of households and population in the district is required. The 2021 census listed 63,300 households and 152,600 persons living in Mid



Sussex with an average household size of 2.41 persons. Taking into account the number of recorded incidents and current number of households this results in 0.49 incidents per household (30,788/63,300) and 0.246 incidents per person (30,788/152,600) that require police attendance in the Mid Sussex district each year.

Sussex Police have a duty to respond to all incidents and many of these incidents are not recorded as crimes. We deliver crime prevention and presence, attendance and service lead at emergencies e.g. RTA's or flooding, counter terrorism and community reassurance. We must also attend all incidents involving deaths, attend crowd and events policing, attend and input to community safety and crime partnerships, and provide referral responses when there are expressed concerns about the safety of children, the elderly and those with special needs.

4. Breakdown of predicted incidents as a result of population increase in Mid Sussex

The proposed development of up to 260 residential units would have a population of 627 persons (average occupancy rates). Applying the current ratio of 'incidents' to households then the development would generate an additional 127 incidents per year for Sussex Police to attend (0.49 x 260).

These incidents are likely to result in 38 additional recorded crimes per year attributed to this neighbourhood.

5. Current breakdown of policing delivered in Mid Sussex

Current statistics show that Sussex Police employ **3124** officers in active duty delivering policing to the residents of Sussex. These roles can be categorized into dedicated policing teams delivering neighbourhood and response policing; divisional policing delivering specialist services such as investigations; and Force wide policing teams delivering specialist policing services across the county such as Firearms, Major crime and counter terrorism. Only departments of over 5 officers have been included within Force wide staff and officers which removes specialist officer roles which are not clearly directly tied to population growth (ex: Chief Inspectors, specialist management functions).

In total the Local Authority of Mid Sussex is served by; (all figures = FTE)

Police officers

- 87 dedicated uniformed Officers

Neighbourhood Policing Team officers (NPT), Local Support Team, Response Policing Teams, Police Community Support Officers.

- 19 divisional officers

The West Sussex division has 151 officers not including the dedicated officers listed as dedicated uniformed officers. These roles include Investigation teams, Special Investigations Unit (SUI), CIT (Crisis Intervention Team, Operational support teams. Recorded incidents in Mid Sussex account for 12.5% of the recorded incidents in West Sussex over the last year therefore it is reasonable to allocate 19 divisional officers to the Mid Sussex district.



- **56 Force wide officers**

A large number of our officers deliver force wide policing in a variety of roles including Operations, Firearms, Major crime, Public protection, Specialist crime, Custody, Communications, Professional standards and Training roles. There are 930 officers Force wide officers which deliver policing to the whole of Sussex and are vital to the operation of all types of policing including the functioning of neighbourhood policing. Taking into account into account that 6% of all incidents managed by Sussex Police occur in Mid Sussex, 56 officers are required for the policing of this district.

Police staff

Sussex Police currently employs **2509** support staff delivering policing to the residents of Sussex. These roles can be categorized into dedicated support staff such as police enquiry officers and facilities assistants; Divisional staff teams (i.e.: East Sussex, West Sussex, and Brighton & Hove) delivering services such as crime prevention, operations, investigations, strategic support, corners office and other essential roles. Force wide support staff roles such as public protection, joint transport services, crime justice & custody, communications departments and specialist crime command. Some specialist department roles have not been included, however all the above force-wide departments consist of 10 employees or larger. This precludes specialist support staff roles such as the office of the Police and Crime Commissioner which are not directly linked to population growth.

- **14 dedicated support staff**

Police Enquiry officers, Facilities officers, Facilities Assistants

- **24 divisional support Staff**

As with police officers roles divisional support staff is essential to support front line policing and drawn upon when required. Divisional support staff roles include Investigations teams, Crime Prevention, Licensing, Prosecution case workers, Coroner's Office and other essential roles.

- **151 Force-wide support staff**

The majority of our support staff functions are delivered in a force-wide capacity. Only departments with over 10 or more support staff members have been included within this field which removes specialist roles within Sussex Police which capacity is not directly related to population increase. There are 2509 support staff within these various major support staff departments including Specialist crime command, Public protection, Operations, Human Resources, Communications departments and Joint Transport Service. Taking into account into account that 6% of all incidents managed by Sussex Police occur in Mid Sussex, 151 support staff are currently required to support policing in Mid Sussex.



Dedicated officers	87
Divisional officers	19
Force wide officers	56
Total number of officers	162
Dedicated support Staff	14
Divisional support staff	24
Force wide support Staff	151
Total number of staff	189

Currently 30,788 incidents are attended by 162 officers per year in Mid Sussex which is a ratio of 190 incidents per officer, per year. To retain this current ratio of 190 incidents per officer per year, an additional 127 incidents per year would require 0.22 additional officers (22% of a current officer's workload).

In addition to the significant impacts this development would place on our policing teams this development would also require significant investment in our support staff capacity. As we have shown, approximately 189 police staff are required to support policing to the 63,300 households in Mid Sussex. This is a ratio of 335 households per staff member. Therefore, an additional 260 households would require 0.26 additional support staff to retain this existing ratio.

Additional officers/staff required as a result of 260 additional homes

Total Additional Officers Required	0.67	$\frac{127 \text{ (expected No. incidents arising from development)}}{190 \text{ (No. incidents attended per year by an officer)}}$
Total Additional Support Staff (Local/Central)	0.78	$\frac{260}{335}$ (no. of new households / Existing no of support staff per household)

6. Costs

In order to mitigate against the impact of growth our office have calculated that the capital 'cost' of policing new growth as a result of this major planning application equates to **£40,712.39**.



These funds would be used for the future purchase of infrastructure to serve the proposed development. This cost will now be broken down clearly to show the capital infrastructure required to support these new officers.

The contribution requested will fund, in part, the following items of essential infrastructure and is broken down as follows;

Officer and Staff Set-Up

OFFICER	Capital cost	Number required for new officer	Total
Start-up equipment (radio, workstation, body worn camera, IT equipment)	£4,307.33	0.67	£2,885.91
Start-up recruitment and training cost	£5,460	0.67	£3,658.20
TOTAL COST	£9,767.33	0.67	£6,544.11

SUPPORT STAFF	Capital cost	Number required for new staff	Total
Start-up equipment (workstation, IT equipment)	£2,086	0.78	£1,627.08
Start-up recruitment cost	£1,060	0.78	£826.80
TOTAL COST	£3,146	0.78	£2,453.88

Sussex Police would utilise the contribution in the following manner;

- **£6,544.11** toward the cost of one additional dedicated officer in the Copthorne, Worth, Crawley Down and Turners Hill NPT to deliver policing to the site and surrounding area to be based at East Grinstead Police Station.
- **£2,453.88** as the full cost of one additional support staff to be based at East Grinstead Police Station.

We could not have officers attending this development with less than adequate equipment with unnecessary risk to themselves and occupiers served.



Premises

At present, policing in Mid Sussex is delivered from Haywards Heath, Burgess Hill and East Grinstead (Chequer Meads art centre) police stations. Haywards Heath and Burgess Hill are our major divisional sites which accommodate various functions including prevention, response and roads policing teams that would serve new development occurring across the district. Any additional offices or staff would be based at the East Grinstead Police Office where our estates department have identified sufficient capacity at this time and therefore no contribution is sought for the cost of supporting these officers at this site.

Vehicles

A vital part of providing effective policing to the residents of Mid Sussex is maintaining the large fleet of vehicles. These vehicles range from General Response Vehicle (GRVs or patrol cars), unmarked general support vehicles, Public Service Unit vans and minibuses, scientific (e.g. Scene of Crime Officers) vehicles, pursuit vehicles – 4 x 4 and high speed, motorcycles. Current fleet deployment in Mid Sussex administrative area (serving 63,300 households) currently consists of 27 active dedicated vehicles and 39 force-wide vehicles. Maintaining our force Wide fleet is essential to the success of Sussex Police and important to enable the force to efficiently combat cross border crime. There is currently no capacity to provide additional vehicles in line with development growth at present and our budget is required to replace and maintain vehicles at their end of life.

Contributions towards additional police vehicles have commonly been sought via developer contributions to meet the increased demands on our service as a result of development growth.

In total there are 27 dedicated vehicles and 39 force-wide vehicles delivering policing to the district.

	Department	Number of vehicles
Divisional	Crime management, Local command, Local investigations, Neighbourhood Policing Teams, Neighbourhood Response Teams, Response investigations	27
Force wide	Crime support command, Dogs section, Firearms, Intel, Licensing, Major investigations, Public protection, Traffic, Training.	39

The average capital cost of a new vehicle is £17,000 (not including fuel and maintenance). Our guideline for the majority of marked vehicles is to replace every four years or £125,000 miles. The condition of vehicles at the end of their police life varies however Sussex Police forecast that they will redeem, on average 5% of a vehicles value on disposal.

The development will require fleet investment far exceeding 4 years therefore Sussex Police would require at least an 8 year life of provision. This contribution is justified because there is insufficient funding within the police's revenue income to take on the capital cost after just four years, without diverting money from elsewhere. Sussex



Police estimate that the 4 year lifetime cost per vehicle is approximately £42,240 including running costs and capital charges.

66 vehicles at net value of £1,122,000

Existing number of households in Mid Sussex (63,300) = £17.72 per Household
(1,122,000 / 63,300) x 260 Households x 2 = **£9,214.40** to give 8-year life of provision.

Sussex Police would utilise the contribution in the following manner;

- **£9,214.40** as payment towards one additional vehicle in the Copthorne, Worth, Crawley Down and Turners Hill NPT to deliver policing the site and surrounding area. Additional secured contributions in the Copthorne, Worth, Crawley Down and Turners Hill NPT would be put towards the replacement of this vehicle after 4 years at a cost of £17,000 per vehicle.

The same methodology has been used to calculate our fleet requirement as the Warwickshire police representation which has been supported in the recent appeal decision concerned contributions towards policing (**Appendices 2 and 6** - APP/R1845/W/17/3173741) issued on the 14th March 2018. Sussex Police consider this would be the most appropriate methodology to use in this and all future section 106 requests.

Automatic Number Plate Recognition (ANPR) Cameras and Closed-Circuit Television (CCTV)

Sussex Police are currently promoting a roll out of Automatic Number Plate Recognition (ANPR) Cameras throughout Sussex. The number and location of cameras is driven by the scale and location of new development and the road network in the area. Cross border crime is a growing issue in Sussex with criminals travelling from London and the surrounding Home Counties into Sussex to commit offences.

It is also noted that the Parish Council have also been in discussion with Sussex Police with regard to the provision of ANPR cameras in the Copthorne area.

In assessment based on the development of 'Land to the West of Courthouse Farm' has been undertaken and recommends additional camera sites to be installed in the surrounding area of the site. Our ANPR Manager actively monitors new development and existing ANPR camera coverage to mitigate against the impacts of development growth. Each camera is costed below, and requirements are assessed on the basis of the scale, location and proximity to the road network of the housing growth proposed over the development plan period. Sussex Police have identified approximate locations which require additional ANPR coverage which can be confidently shared with the Local Authority in due course.

ANPR cameras are used in three keyways by police forces: 1) to identify vehicles known to be used by criminals and disrupt their activity; 2) to gather intelligence and 3) to investigate crime. There are many benefits of ANPR cameras which can be used overtly or covertly and are regulated by the Regulation of Investigatory Powers Act 2000 (RIPA). Using cameras at either fixed locations or portable locations, images are captured and recorded along with the vehicle registration mark (VRM) or number plate, time and location of the vehicle, which can then be instantly checked against database recorded of vehicle of interest. The instant search of database records of vehicles of

interest can confirm whether a vehicle associates with a known criminal has been in the area at the time of a crime. Importantly, ANPR can be used in real time. This means that police officers can intercept and stop the vehicle, check it for evidence and make arrests if necessary. The use of ANPR in this way has proved important in the detection and prosecution of many cases of major crime.

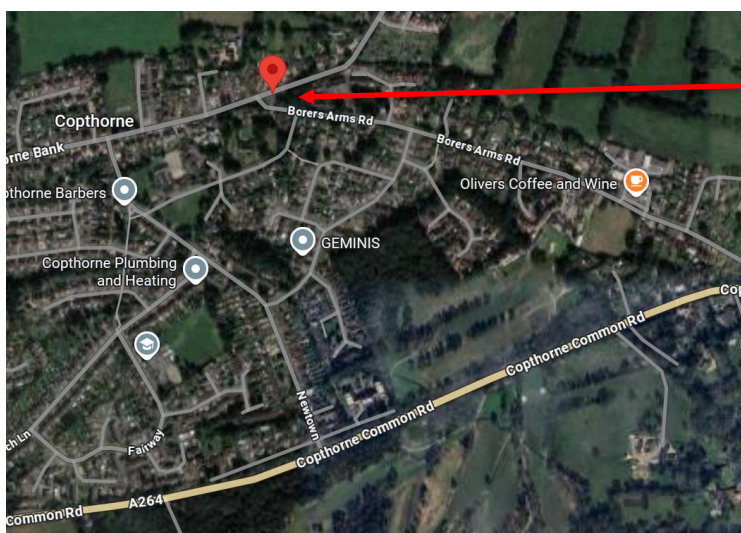
Three principal benefits of using ANPR are: 1) Increase the information and intelligence available to identify criminals; 2) Enable the police to deploy resources to respond to criminals of interest in real time; 3) Improve investigations after crimes have been committed.

The same 3no. ANPR cameras have been requested under planning application (ref. DM/25/3021 - Land to The West Of Courthouse Farm Copthorne Common Copthorne West Sussex). In the event both applications (DM/25/3021 and DM/26/0303) it is recommended that the ANPR provision is split between the two applications. Sussex Police would recommend ANPR camera no.1 is secured under DM/25/3021 and ANPR cameras nos. 2 and 3 are secured under DM/26/0303.

It should be noted that with regard to the provision of CCTV on site, all CCTV systems are owned and maintained by the local district councils (within Sussex). The Police only review live data when required or demanded by incidents through portals. Officers can also access this information, post incident for evidential purposes. As such, Sussex Police will not be requesting contributions for on-site CCTV in this instance

The cost of a fixed ANPR camera is shown below:

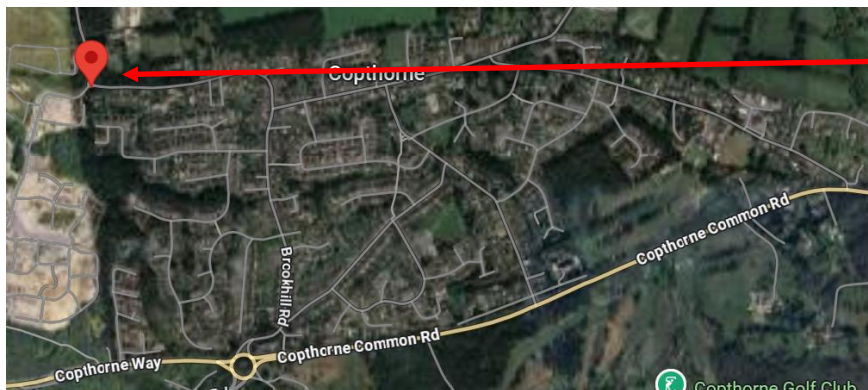
- 1) Copthorne Bank – 1no. additional camera = £7,500



1) Proposed camera location



2) Shipley Bridge Lane J/W Worsell Drive – 1no. additional camera = £7,500



2) Proposed camera location

3) A264 Snow Hill – 1no. additional camera = £7,500



3) Proposed camera location

7. Compliance with National Policy and CIL Regulations

Following the abolition of CIL regulation 123, the funding of infrastructure is no longer restricted to 5 separate developer contributions. Within Mid Sussex the majority of policing is carried out by the NRT/NPT teams, therefore our office would recommend funds received from Section 106 agreements should be spent directly on supporting these teams. Therefore, when contributions from new housing development are pooled it is sensible to do this based on NRT areas which in the case of this development is the Cophorne, Worth, Crawley Down and Turners Hill NRT/NPT.

The assessment for these infrastructure contributions is outlined in CIL Regulation 122, which requires each item to meet the following three tests. From the numerous appeal / Secretary of State decisions and High Court judgements there is significant evidence that all the items listed in this request comply with CIL Regulation 122.

The costs of training officers have been included in this request and have been found sound (and compliant with Regulation 122) in numerous appeal decisions included as **Appendix 2**. In the respect of training in particular, the Sketcheley house decision (page 19 of Appendix 2) makes specific reference to 'protective clothing, uniforms and bespoke training' and were endorsed by the Inspector in his report at paragraph 11.57 and by the Secretary of State at paragraph DL22.



It is therefore plain that the Secretary of State and numerous Planning Inspectors consider that National Planning Policy and legislation is capable of encompassing these types of infrastructures.

1. Necessary to make the proposed development acceptable in planning terms

The creation of safe and accessible environments where crime and disorder, and the fear of crime do not undermine the quality of life or community cohesion is fundamental to planning for sustainable development as confirmed in the National Planning Policy Framework (NPPF, December 2024).

The Mid Sussex District Plan (2014-2031) lists one of the major challenges facing the District as the need to achieve sustainable, attractive and inclusive communities to ensure that the District continues to benefit from low crime levels, good health and an attractive natural and built environment.

One of the priority themes of the emerging plan is '*Ensuring cohesive and safe communities*'. Crime prevention and crime management is essential to ensure strategic objective 12 is met which aims '*To support sustainable communities which are safe, healthy and inclusive*'.

With regard to the Mid Sussex District Plan 2014-2031 Appendix D (Glossary) of the adopted Plan includes a non-exhaustive list of key infrastructure requirements, including the Emergency Services – Police. The fact that it does not cite police contributions specifically does not preclude the need for these contribution. The list is expressed with sufficient width that it encompasses any necessary infrastructure, which could and should lawfully include police contributions. Such contributions are, in principle, within the lawful ambit of the policy remit which requires financial contributions from developments to help defray the external costs of proposal which would otherwise fall on general taxation.

The adopted Mid Sussex District Council Development Infrastructure and Contributions SPD (July 2018) includes detailed calculations of Sussex Police's infrastructure requirements. Certain statistics have been updated for this representation however the majority of data is in accordance with the adopted SPD.

Build costs have risen substantially since the 'Development Infrastructure and Contributions' SPD was adopted in July 2018. It is critical that new development mitigates its impact on local residents and communities. The Council has therefore revoked the SPD and will now rely on more up-to-date evidence on infrastructure costs (by using [Appendix 5 of the Submission Draft District Plan](#)) with a mechanism to charge higher levels of contributions to help alleviate that pressure.

The Secretary of State has recognised that it is not a rigid requirement to have express reference to policing within local planning policy because the overarching principle of ensuring safe communities is recognised in the NPPF. The Planning Inspector in the case of North-west Leicester District Council vs Money Hill Consortium (**Appendix 4**) stated:

'62. The obligations of the Undertaking, other than that to support Police operations, are all related to requirement of development plan policies and are all necessary to make the development acceptable in planning terms. They are all furthermore, directly related to the development, are fairly and reasonably related in scale and kind to the development, and are in place to mitigate the effects of the development. The Legal Agreement, setting aside the Police contributions, therefore complies with Regulation



122 of the CIL Regulations 2010. Furthermore, taking into account the submissions of NWLDP, LCC and LP, the Agreement complies with Regulation 123 of the CIL Regulations 2010.

63. The contributions of £219,029 towards Police infrastructure is not related to requirement of development plan policies. The figure has been arrived at following a close and careful analysis of the current levels of policing demand and deployment in Ashby. The proposed development, in terms of population increase, would have a quantifiable and demonstrable effect on the ability of the Police to carry out their statutory duties in the town. LP has not sought any contribution to some aspects of policing, such as firearms and forensics, but only for those where there is no additional capacity. The contribution is necessary because the new housing that would be created would place a demonstrable additional demand on Police resources in Ashby. The financial contributions to Police operations thus satisfies Regulation 122 of the Community Infrastructure Levy Regulations 2010 and a provision of the Undertaking would ensure that the contribution also satisfies Regulation 123 of the Community Infrastructure Levy Regulations 2010.'

The importance of policing contributions is importantly recognised in recent court judgments and considered an essential core principle of the NPPF. The judgment of Mr Justice Green 01/11/2016 (**Appendix 1**) with regard to the High Court challenge of Jelson Limited vs Secretary of State for Community and Local Government (1) Hinkley and Bosworth District Council stated:

'The gist of the Inspectors reasons are adequately set out in paragraphs [44]-[47] (see above). She records that LP has adequately demonstrated that the sums would be spent on equipment and services which arose "...Directly from the new households occupying the proposed development". Accordingly she concluded, in terms of causality, that there was a proper nexus between the expenditure and the new development. She also records that the proposed spending was properly attributed between individual projects and procurement such as property adaption and contributions towards a vehicle in order to prevent a need for pooling contributions.'

'Mr Lambert cited empirical data based upon existing crime patterns and policing demand and deployment from nearby residential areas which established the direct and additional impacts of the development upon local policing. That data established that there would be an incremental demand in relation to such matters as calls and responses per year via the police control centre; an increase in annual emergency events within the proposed development; additional local non-emergency events which trigger follow-up with the public; additional recorded crimes in the locality based upon beat crime and household data and a proportionate increase in anti-social behaviour incidents an increase in demand of patrol cover; and, an increase in the use of vehicles equating to 12% of an additional vehicle over a six year period.'

Moreover, the wider principles of sustainable development within the NPPF also require consideration of all necessary infrastructure requirements, as observed by Foskett J in *R. (Police and Crime Commissioner for Leicestershire) v Blaby DC and others* (**Appendix 3**). This judgment stated:

'11. It is obvious that a development of the nature described would place additional burdens on local health, education and other services including the police force. The focus in this case is upon the effect upon the local police force. If it sought to shoulder those additional and increased burdens without necessary equipment (including vehicles and radio transmitters/receivers for emergency communications) and



premises, it would plainly not be in the public interest and would not be consistent with a policy that encourages "sustainable development": see for example, paragraphs 17 of 79 of the National Planning Policy Framework (NPPF). It is that that leads to the Claimants interest in the matters.'

As shown in section 1, there is no dedicated Government funding to comprehensively cover the capital costs associated with policing new housing development. Unless contributions from new developments are secured then Sussex Police would be unable to maintain the current levels of policing with resources diverted and stretched, inevitably leading to increased incidents of crime and disorder within the local area. Sussex Police strive to reduce the level of crime in the County however due to the significant numbers of new housing being brought forward the need for more front-line staff and associated infrastructure has never been more relevant as a fundamental planning policy consideration.

Appeal decision APP/C3240/W/16/3144445 (**Appendix 2**) issued on the 21st March 2017 provides further support for developer contributions towards the capital costs of additional policing infrastructure arising from new development. The Planning Inspector stated:

'165: There is no doubt that the proposed development would generate a need for policing and that need would require additional resources which have been calculated on a pro-rata dwelling basis. The Framework identifies a need for safe and accessible environments where crime and disorder, and the fear of crime, do not undermine quality of life or community cohesion. In addition, an extensive array of appeal decision supports the principle of police contributions. Overall, the balance of the evidence before me points to the obligation (based on the underlying pro-rata calculation) being necessary and proportionate mitigation for the development.'

We would also bring to attention dicta from the High Court judgment by Mr Justice Foskett in *Police and Crime Commissioner for Leicestershire vs Blaby Council* (**Appendix 3**). Paragraph 61 and 62 of the judgment state:

'61. I do not, with respect, agree that the challenge mounted by the Claimant in this case can be characterised as a quibble of a minor factor. Those who, in due course, purchase properties on this development, who bring up children there and who wish to go about their daily life in a safe environment, will want to know that the police service can operate efficiently and effectively in the area. That would want to know that the police service can operate efficiently and effectively in the area. That would plainly be "consumer view" of the issue. The providers of the service (namely, the Claimant) have statutory responsibilities to carry out and, as the witness statement of the Chief Constable makes clear, that itself can be a difficult objective to achieve in these financially difficult times. Although the sums at stake for the police contributions will be small in comparison to the huge sums that will be required to complete the development, the sums are large from the point of view of the police.'

62. I am inclined to the view that if a survey of local opinion was taken, concerns would be expressed if it were thought that the developers were not going to provide police with sufficient contribution to its funding requirements to meet the demands of policing the new area: lawlessness in one area can have effects in another nearby area. Miss Wigley, in my judgment, makes some entirely fair points about the actual terms of the section 106 Agreement so far as they affect the Claimant.'



Appeal decision APP/K2420/W/15/3004910 (**Appendix 2**) provides further evidence for developer contributions towards necessary policing infrastructure required to enable effective policing of new housing development. The Planning Inspector supported the methodology used for this calculation and compliance with the specific capital infrastructure items detailed in our request.

'44. Leicestershire Police (LP) have demonstrated adequately that the sums request would be spent on a variety of essential equipment and services, the need for which would arise directly from the new households occupying the proposed development. It would be necessary, there, in order to provide on-site and off-site infrastructure and facilities to serve the development commensurate with its scale and nature consistent with LP Policy IMP1. The planning contribution would also enable the proposed development to comply with the Framework's core planning principle of supporting local strategies to improve health, social and cultural wellbeing and delivering sufficient community facilities to meet local needs.'

In respect of the methodology used for this request the same Planning Inspector stated *'47 – I consider this to be a no less realistic and robust method of demonstrating the criminal incidents likely to arise in a specific area than the analysis of population data which is normally used to calculate the future demand for school places. The evidence gives credence to the additional calls and demands on the police service predicted by LP'.*

A financial contribution towards essential policing infrastructure is clearly essential to make new housing development acceptable in planning terms. The policing infrastructure items outlined in this request are essential to help support new officers required due to population growth and most importantly keep existing and future residents of Mid Sussex safe.

2. Directly related to the proposed development

There is a functional link between new development and the contributions requested. Put simply without new development taking place and the subsequent population growth there would be no requirement for the additional infrastructure. The additional population growth will lead to an increase in incidents, which will require a Police response. The infrastructure outlined in this request has been specifically identified by the NPT/NRT teams policing the areas of Mid Sussex as necessary to deal with the likely form, scale and intensity of incidents this new housing development will generate.

3. Fairly and reasonably related in scale and kind to the proposed development.

Securing proportionate developer contributions towards necessary capital expenditure is essential to help meet a proportionate increase in police infrastructure costs and to enable Sussex Police to maintain its current level of service in the district. This infrastructure has been identified by Sussex Police as necessary to provide an appropriate level of policing to serve the proposed development and maintain the existing high level of community safety.

A clear numerical, evidence-based approach has been demonstrated which is supported by case law and recent appeal decisions by the Planning Inspectorate. The various items of capital expenditure and infrastructure requested are considered CIL compliant and are necessary to enable new officers to undertake their role to meet the policing needs



of the development and mitigate impacts to existing resources. A reasonable and proportionate approach has been adopted.

We would also highlight two recent appeal decisions in Leicestershire (APP/F2415/A/12/2179844 & APP/X2410/A12/2173673, **Appendix 2**). In assessing the request from Leicestershire police for developer contributions towards infrastructure the Inspector commented at **para 29** of decision 2179844;

'The written evidence submitted by Leicestershire Police detailed the impact the proposed development would have on policing, forecasting the number of potential incidents and the anticipated effect this would have on staffing, accommodation, vehicles and equipment. In view of the requirement of national planning policy to create safe and accessible environments where crime and disorder, and the fear of crime, do not undermine quality of life, it is considered that, on the evidence before me, a contribution towards policing is necessary to make the development acceptable in planning terms.'

Furthermore, with regard to appeal decision 2173673, the Inspector is unequivocal in highlighting the acceptability of police contributions being recipients of developer's contributions;

'Adequate policing is so fundamental to the concept of sustainable communities that I can see no reason, in principle, why it should be excluded from the purview of S106 financial contributions, subject to the relevant tests applicable to other public services. There is no reason, it seems to me why police equipment and other items of capital expenditure necessitated by additional development should not be so funded, alongside, for example, additional classrooms and stock and equipment for libraries.' [**Para 292**]

These appeal decisions confirm that the approach of Sussex Police in assessing the impact of development, having regard to an assessment of the potential number of incidents generated by growth is appropriate, and fundamentally it confirms that police infrastructure should be subject to developer contributions as the provision of adequate policing is fundamental to the provision of sustainable development.

Furthermore, the requirement to ensure that crime and the fear of crime is addressed through the planning process runs through the revised NPPF (December 2024);

Paragraph 20(b) retains reference to 'security' infrastructure and advises that strategic policies should set out an overall strategy for the pattern, scale, design and quality of development, and make sufficient provision for:

b) Infrastructure for transport, telecommunications, security, waste management, water supply, wastewater, flood risk and coastal change management, and the provision of minerals and energy (including heat).

Paragraph 96(b) advises that planning policies should aim to achieve healthy, inclusive and safe places which:

'are safe and accessible, so that crime and disorder, and the fear of crime, do not undermine the quality of life or community cohesion – for example through the use of beautiful, well-designed, clear and legible pedestrian routes and cycle routes, and high quality public space, which encourage the active and continual use of public areas.'

Paragraph 101 states that:



'To ensure faster delivery of other public infrastructure such as health, blue light, library, adult education, university and criminal justice facilities, local planning authorities should also work proactively and positively with promoters, delivery partners and statutory bodies to plan for required facilities and resolve key planning issues before applications are submitted. Significant weight should be placed on the importance of new, expanded or upgraded public service infrastructure when considering proposals for development.'

Paragraph 102 outlines the importance of engaging with the security services to inform planning policy decision and promote public safety and defence requirements. This will be achieved by:

- a) *Anticipating and addressing possible malicious threats and natural hazards (whether natural or man-made), especially in locations where large numbers of people are expected to congregate. Policies for relevant area (such as town centre and regeneration frameworks), and the layout and design of developments, should be informed by the most up-to-date information available from the police and other agencies about the nature of potential threats and their implications. This includes appropriate and proportionate steps that can be taken to reduce vulnerability, increase resilience and ensure public safety and security. The safety of children and other vulnerable users in proximity to open water, railways and other potential hazards should be considered in planning and assessing proposals for development; and*
- b) *Recognising and supporting development required for operational defence and security purposes, and ensuring that operational sites are not affected adversely by the impact of other development proposed in the area.*

The Glossary to the current NPPF (December 2024) includes an entry entitled 'Essential Local Worker'. It states *'these are public sector employees who provide frontline services in areas including health, education and community safety – such as NHS Staff, teachers, police, firefighters and military personnel, social care and childcare workers'*. This recognises the emergency services as essential for the public, alongside education and health.

I trust this sets out sufficiently our Office's request for infrastructure contributions relating to this development at Land North of Borers Arms Road, Copthorne, West Sussex RH10 3LH. In the absence of developer contributions towards the provision of essential policing infrastructure, Sussex Police would raise **objection**, as the additional strain placed on our resources would have a negative impact on policing of both the development and force-wide policing implications within the district.

I am more than happy to discuss the content of this submission with yourselves and support with any further evidence if considered necessary.

Yours sincerely

Jane Thatcher

Jane Thatcher
BA (Hons), MSc, MRTPI
Joint Commercial Planning Manager
Sussex and Surrey Police



Part A

'What', 'where' and 'when' of infrastructure requirements relevant to application reference to DM/26/0303

TOPIC	INFRASTRUCTURE REQUIREMENT	AREA	COST PER ITEM	QTY	TOTAL COST	TIMING OF DELIVERY (Occupations)
Policing	Officer start-up equipment cost	Copthorne, Worth, Crawley Down and Turners Hill NPT/NRT	£4,307.33	0.67	£2,885.91	TBC
Policing	Officer start-up recruitment and training	Copthorne, Worth, Crawley Down and Turners Hill NPT/NRT	£5,460	0.67	£3,658.20	TBC
Policing	Staff start-up equipment cost	East Grinstead	£2,086	0.78	£1,627.08	TBC
Policing	Staff start-up recruitment and training	East Grinstead	£1,060	0.78	£826.80	TBC
Policing	Fleet	Copthorne, Worth, Crawley Down and Turners Hill NPT/NRT	£9,214.40	1	£9,214.40	TBC
Policing	ANPR	Copthorne Bank	£7,500	1	£7,500	TBC
Policing	ANPR	Shipleigh Bridge Lane J/W Worsell Drive	£7,500	1	£7,500	TBC
Policing	ANPR	A264 Snow Hill	£7,500	1	£7,500	TBC
Total					£40,712.39	



ENC.

Appendix 1 – Jelson Ltd vs Secretary of State and Local Government (1) Hinkley and Bowsorth District Council (2) – 22/11/2016 (paragraphs 71-81)

Appendix 2 – Examples of appeal decisions supporting police contributions

- APP/Y3615/W/23/3320175 – Land at the Former Wisley Airfield, Hatch Lane, Ockham, Surrey
- APP/E3715/W/21/3268629 – Land North of Coventry Road, Long Lawford, CV23 9BT
- APP/T3725/W/21/3270663 - Land South of Chesterton Gardens, Leamington Spa
- APP/W3710/W/20/3251042 - North Warwickshire and South Leicestershire College, Hinckley Road, Nuneaton, CV11 6LS
- APP/Y0435/W/20/3251121 - Land at Brickhill Street, South Caldecotte, Milton Keynes, MK17 9FE
- APP/R3705/W/19/3234056 - Land East of Islington Farm, Tamworth Road, Wood End, Warwickshire
- APP/R3705/W/18/3196890 – Land to the south of Tamworth Road and to the west of the M42, Tamworth, B78 1HU
- APP/C3810/W/17/3187601 – Land west of Church Lane and south of Horsemere Green Lane, Climping, West Sussex, BN17 5RY
- APP/R3650/V/17/3171287 – Dunsfold Park, Stovolds Hill, Cranleigh, Surrey, GU6 8TB
- APP/R1845/W/17/3173741 – Land off The Lakes Road, Bewley, Worcestershire, DY12 2BP
- APP/C3105/W/17/3172731 – White Post Road, Banbury.
- APP/C3105/W/16/3163551 – Land off Howes Lane and Middleton Stoney Road, Bicester, Oxfordshire
- APP/C3810/V/16/3143095 – Land east of Fontwell Avenue, Fontwell, West Sussex, BN18 0SB
- APP/E3715/W/16/3147448 – Land at Ashlawn Road West, Rugby, Warwickshire
- APP/C3240/W/16/314445 – Land east of Kestrel Close / Beechfields Way, Newport, Shropshire
- APP/K2420/W/15/30004910 – Land off Sherbourne Road, Burbage, Leicestershire
- APP/G2435/A/14/2228806 – Money Hill, Land North of Wood Street, Ashby-de-la-Zouch, Leicestershire
- APP/X241-/W/15/3007980 – Land rear of 62 Iveshead Road, Shepshed, LE12 9ER
- APP/T3725/A/14/2221613 – Land at the Asps, bound by Europa Way (A452) to the east and Banbury Road (A425) to the west
- APP/T3725/A/14/2229398 – Land South of Gallows Hill / West of Europa Way, Heathcote, Warwick
- APP/G2435/W/15/3005052 – Land South of Greenhill Road, Coalville, Leicestershire
- APP/Q3115/A/14/2222595 – Land north of Littleworth Road, Benson
- APP/A2470/A/14/2222210 – Greetham Garden Centre, Oakham Road, Greetham, Oakham
- APP/A2470/A/14/2227672 – Land to the rear of North Brook Close, Greetham, Rutland
- APP/L2440/A/14/2216085 – Land at Cootage Farm, Glen Road, Oadby, Leicestershire
- APP/Y2430/A/14/2224790 - Land to the east of Nottingham Road, Melton Mowbray, Leicestershire
- APP/2460/A/14/2213689 – Land rear of 44-78 Ashby Road, Hinkley, Leicestershire
- APP/K2420/A/13/2208318 – Land surrounding Sketchley House, Watling Street, Burbage, Leicestershire
- APP/F2415/A/14/2217536 – Land off Fairway Meadows, Ullesthorpe, Leicestershire
- APP/K2420/A/13/2202658 & APP/A/13/2210904 – Land off (to the south of Spinney Drive and land off (to the east of) Brookside, Barlestone, Leicestershire
- APP/H1840/A/13/2199085 & APP/H1840/A/13/2199426 – Land off Pulley Lane, Newland Road and Primslan Way, Droitwich Spa

Appendix 3 – The Queen (on the application of The Police and Crime Commissioner for Leicestershire) vs Blaby Council and Hallam Land (and other developers).

Appendix 4 - North-west Leicester District Council vs Money Hill Consortium – Money Hill, Land North of Wood Street, Ashby-De-La-Zouch (paragraphs 61-63)

Appendix 5 – BCIS Index Average Prices Results

Appendix 6 - APR1845W173173741 – Land of Lakes Road – Worcestershire