

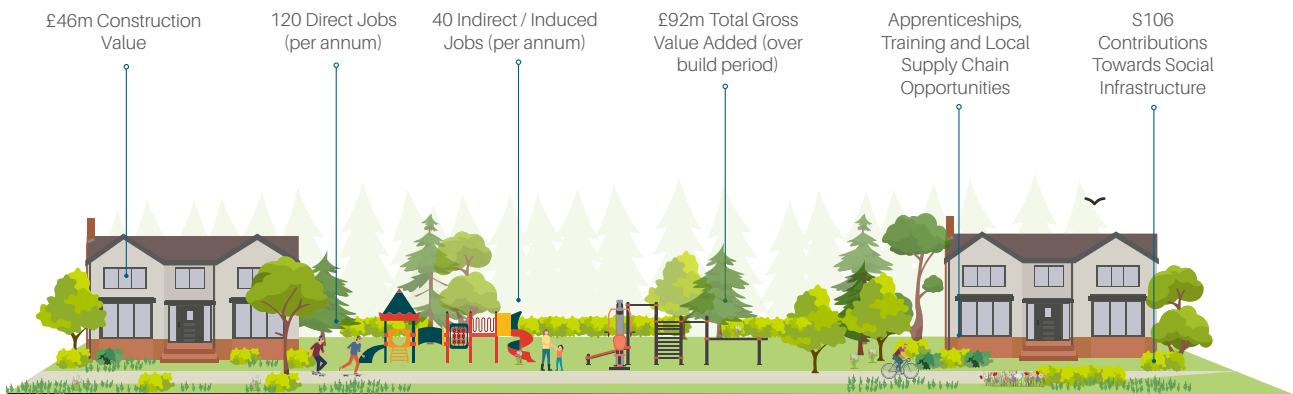
# Socio-Economic Benefits of Development at Land West of Turners Hill Road and North of Huntsland, including land at Hurst Farm



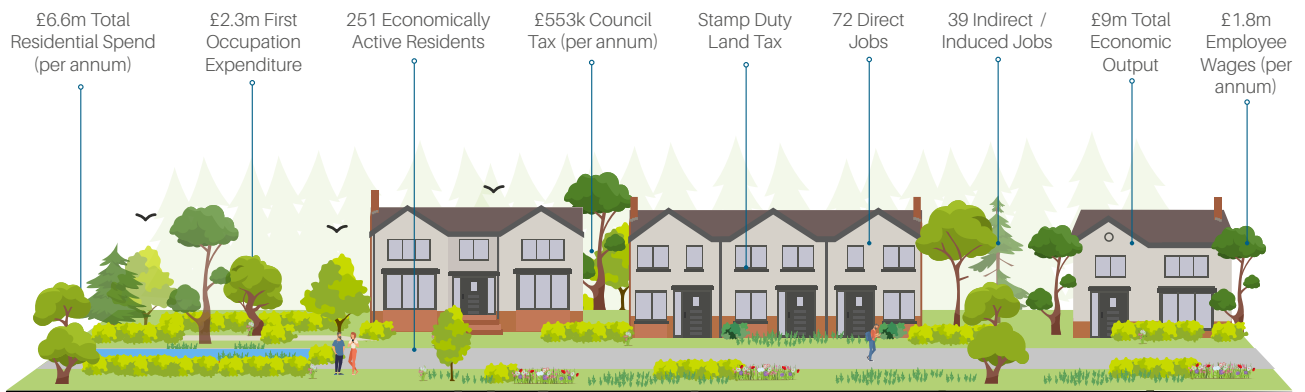
This infographic provides an overview of the socio-economic benefits that could be delivered from the development of land at Crawley Down (north of Huntlands and including Hurst Farm). The proposal includes a new sustainable development of 230 homes and a 70-bed care home, which will make a significant contribution towards meeting a range of housing needs including family, care and 30% affordable housing. It includes new open space and play facilities. Active travel opportunities will encourage healthy lifestyles.

Overall, the delivery of housing will provide significant benefits for the local economy during the construction period and further benefits for the community once occupied, which are captured and summarised here (n.b. figures are approximate and rounded).

## Construction Phase



## Operational Phase



## Wider Benefits

