

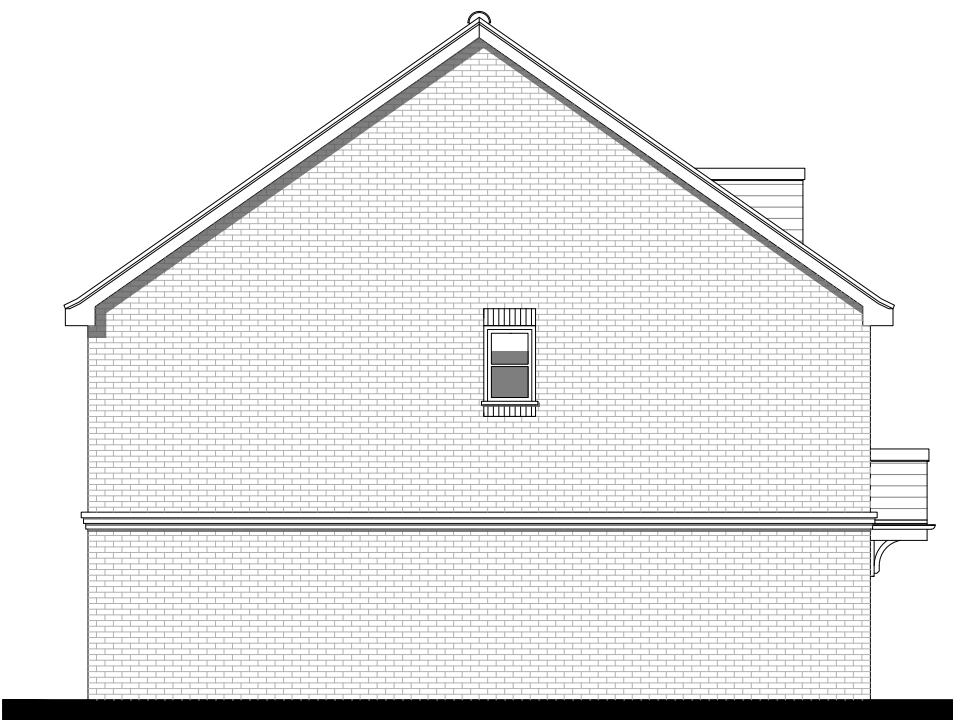


FRONT ELEVATION  
PLOT 24

FRONT ELEVATION  
PLOT 23



SIDE ELEVATION  
PLOT 23 & 24

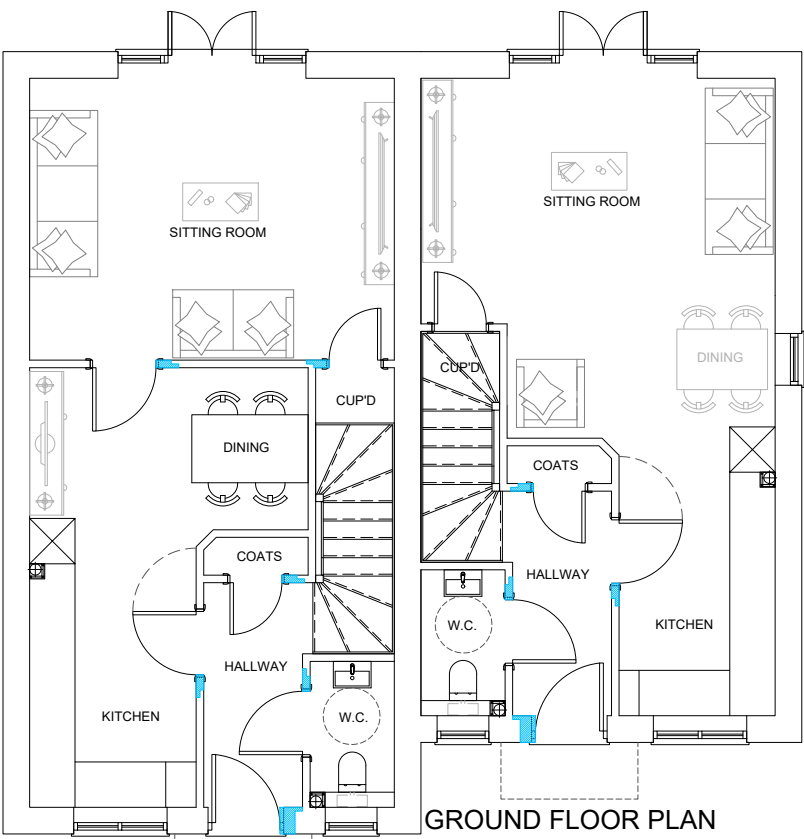


SIDE ELEVATION  
PLOT 24



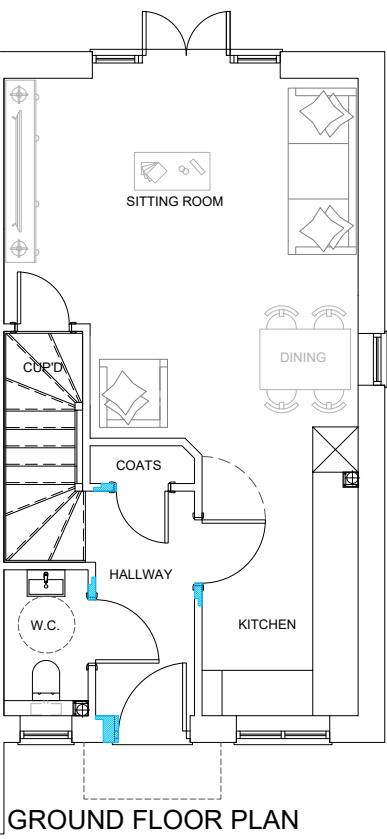
REAR ELEVATION  
PLOT 23

REAR ELEVATION  
PLOT 24



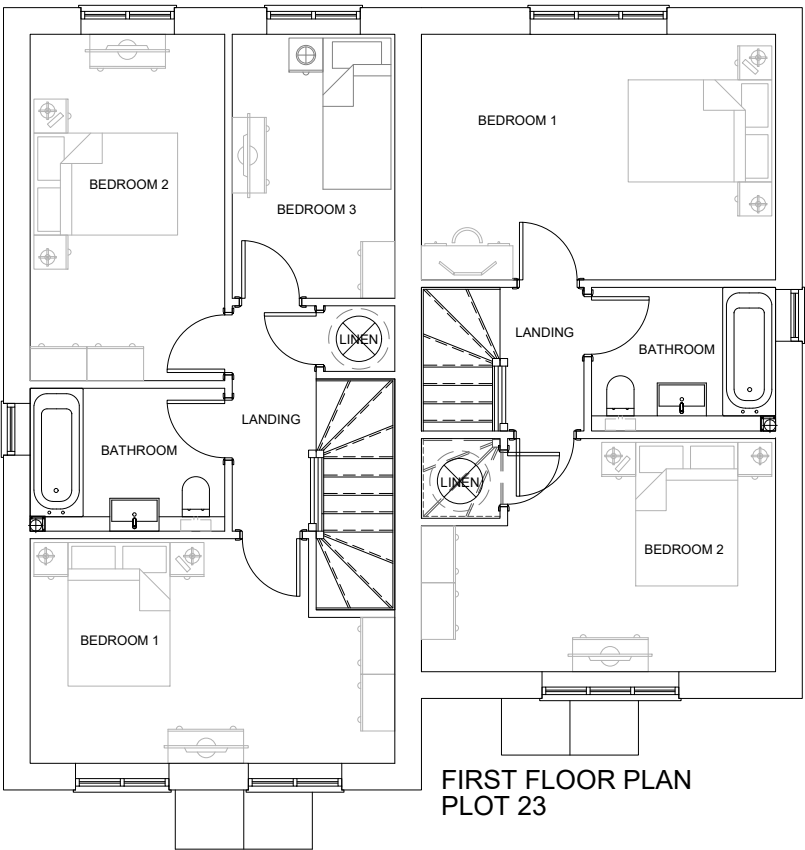
GROUND FLOOR PLAN  
PLOT 24

1001 SQFT - 93 SQM



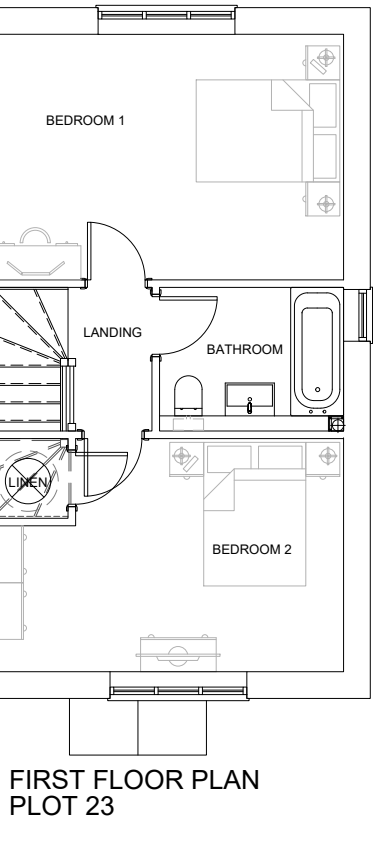
GROUND FLOOR PLAN  
PLOT 23

850 SQFT - 79.0 SQM



FIRST FLOOR PLAN  
PLOT 24

1001 SQFT - 93 SQM



FIRST FLOOR PLAN  
PLOT 23

850 SQFT - 79.0 SQM

key plan (if applicable)

NDSS CHECK	2 STOREY DWELLINGS				
	3 BED	DOUBLE BEDROOM - 11.5 sqm & 2.75m Wide (2.55m every other one)	✓	TOTAL GIA - Over 93 sqm	✓
	5 PERSON	SINGLE BEDROOM - 7.5 sqm & 2.15m Wide	✓	BUILT IN STORAGE - Over 2.5 sqm	✓

NDSS CHECK	2 STOREY DWELLINGS				
	2 BED	DOUBLE BEDROOM - 11.5 sqm & 2.75m Wide (2.55m every other one)	✓	TOTAL GIA - Over 79 sqm	✓
	4 PERSON	SINGLE BEDROOM - 7.5 sqm & 2.15m Wide	✓	BUILT IN STORAGE - Over 2.5 sqm	✓

notes

A 12.08.25 MJ HOUSE TYPE REVISED. PLOT 23 ADDED

revision  
date

prepared  
description



Knightway House  
Park Street  
Bagshot  
Surrey  
GU19 5AQ  
T : 01276 538941  
www.antlerhomes.co.uk

project  
LAND TO THE REAR OF CHESEPEAKE,  
REEDS LANE, SAYERS COMMON

drawing  
PLOT 23 & 24 - FLOOR PLANS &  
ELEVATIONS

date  
14.11.24

scale  
1:100 @ A2

drawn  
MJ

drawing number  
AH291 - PL.21

revision  
A

