

TREES WITHIN THE DEVELOPMENT

TREE PLANTING WILL BE USED WITHIN THE STREET SCENE AS A MEANS OF ADDING STRUCTURE, SEASONAL COLOUR AND TO BENEFIT LOCAL WILDLIFE.

ONCE MATURE, THE CANOPIES OF THE TREE PLANTING WILL HELP TO BREAK THE ROOF LINE OF THE NEW HOUSING IN VIEWS FROM THE SURROUNDING CONTEXT.

ILLUSTRATIVE PLANTING PALETTE:

**Trees**  
Street: *Carpinus betulus* 'Frans Fontaine', *Prunus avium* 'Plena'  
Corner Planting between Dwellings: *Amelanchier arborea* 'Robin Hill', *Prunus accolade*



FRONT GARDENS

FRONT GARDENS TO THE NEW DWELLINGS WILL BE PLANTED TO PROVIDE SOFTENING TO THE STREET-SCENE, SEASONAL VARIATIONS IN COLOUR AND INCLUDE SPECIES OF BENEFIT TO WILDLIFE.

FRONTAGE PLANTS WILL COMPRISE SINGLE SPECIES HEDGE PLANTING AND/OR A MIXTURE OF ORNAMENTALS, GRASSES AND PERENNIALS.

ILLUSTRATIVE PLANTING PALETTE:

**Hedgerow**  
*Ligustrum ovalifolium*, *Prunus lusitanica*

**Planting**  
*Brunnera macrophyllum* 'Jack Frost', *Viburnum davidii*, *Dryopteris filix mas*, *Carex morrowii* 'Ice Dance', *Hebe Caledonia*, *Perovskia* 'Blue Spire', *Echinacea purpurea*, *Salvia caradonna*, *Lavandular angustifolia* 'Hidcote'



LEGEND:

1. RETAINED VEGETATION
2. REMOVED VEGETATION FOR ACCESS
3. PROPOSED NATIVE PLANTING TO CHURCH ROAD FRONTAGE, CONTINUING THE EXISTING STREET VERNACULAR
4. PROPOSED PLANTING TO SOFTEN AND FRAME THE LANDSCAPE SETTING
5. NEW OR ENHANCED NATIVE BUFFER HEDGE PLANTING TO MAINTAIN AND STRENGTHEN THE EXISTING FIELD BOUNDARY VERNACULAR AND PROPOSED SWALES
6. BLOCK PAVING TO PROPOSED RESIDENTIAL STREET AND DRIVEWAYS, (PERMEABLE WHERE REQUIRED)
7. ORNAMENTAL PLANTING TO RESIDENTIAL FRONTAGES
8. PEDESTRIAN GATE/STYLE AND LOCKABLE VEHICLE GATE ACCESS, FOR MAINTENANCE
9. REINFORCED TURF ACCESS ROUTE FOR MAINTENANCE
10. 'PLAY ON THE WAY' L.A.P AREA
11. MACADAM TO ENTRANCE ROAD AND CAR PARK
12. FLAG PAVING TO RESIDENTIAL ENTRANCES
13. TIMBER BOLLARDS TO MITIGATE VEHICULAR ACCESS TO PAVEMENTS, PLAY AREAS AND SWALES
14. BAT & BIRD BOXES INSTALLED WHERE APPROPRIATE
15. BOUNDARY CLIMBING PLANTS TO VISUALLY SOFTEN BOUNDARY WALLS
16. BANK TO ENTRANCE ROAD WITH RETAINING TERRACES
17. PROPOSED LARGER SCALE BEECH TREE TO REPLACE EXISTING TPO STUMP TO CHURCH ROAD FRONTAGE
18. EXISTING ACCESS POINT RETAINED AND MADE GOOD
19. OFF-SITE PROW CONNECTION TO EXISTING ROAD
20. UNDESIGNATED FOOTPATH CONNECTIONS RETAINED

PLAY & RECREATION

LOCATED IN THE NORTH WESTERN CORNER OF THE SITE, THE EQUIPPED LOCAL AREA OF PLAY, (LAP) PROVIDES OPPORTUNITIES FOR PLAY CLOSE TO THE PROPOSED DWELLINGS.

A CLOSE MOWN GRASSED AREA WITH APPROPRIATE SENSORY BOUNDARY PLANTING WILL INCLUDE TIMBER BALANCE ELEMENTS AND BOULDERS.

THE APPROACH TO PLAY IS INTENDED TO BE EXPLORATIVE, NON-PRESCRIPTIVE AND TO STIMULATE IMAGINATIVE PLAY.



CHURCH ROAD FRONTAGE AND SITE ENTRANCE

THE PROPOSED RETAINING TERRACES TO THE CHURCH ROAD FRONTAGE WILL CONTINUE THE EXISTING LINE OF PLANTING AND TO SOFTEN AND FRAME THE ENTRANCE ROAD.

NATIVE PLANTING WILL BE SET BETWEEN THE RETAINING WALLS TO BETTER SITE THE STRUCTURE WITHIN THE EXISTING LANDSCAPE SETTING.

WALL FACING MATERIALS WILL BE CHOSEN TO ECHO THE LOCAL VERNACULAR.

ILLUSTRATIVE PLANTING PALETTE:

**Trees**  
*Acer campestre*, *Betula pubescens*, *Carpinus betulus*

**Hedgerow**  
*Cornus sanguinea*, *Corylus avellana*, *Ligustrum vulgare*, *Ilex aquifolium*, *Viburnum opulus*.



ILLUSTRATIVE LANDSCAPE MASTERPLAN - DEVELOPMENT PARCEL

HARD LANDSCAPE

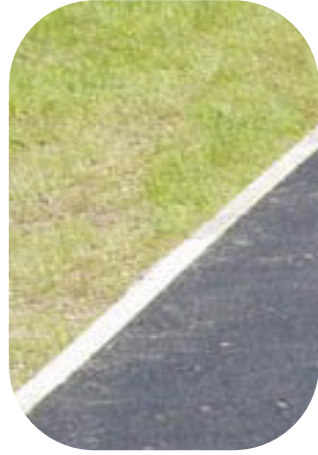
A VARIETY OF SURFACE TREATMENTS WILL BE USED THROUGHOUT THE SCHEME, SUCH AS MACADAM TO THE ACCESS ROAD WITH BLOCK AND SLAB PAVING TO THE RESIDENTIAL STREETS

THE AIM WILL BE TO INSTALL MATERIALS THAT REINFORCE THE HIERARCHY OF ROUTES, CREATE VARIATION IN COLOUR AND TEXTURE, ARE APPROPRIATE TO THE INTENDED USAGE WHILE ECHOING THE LOCAL VERNACULAR IN COLOUR TONE.

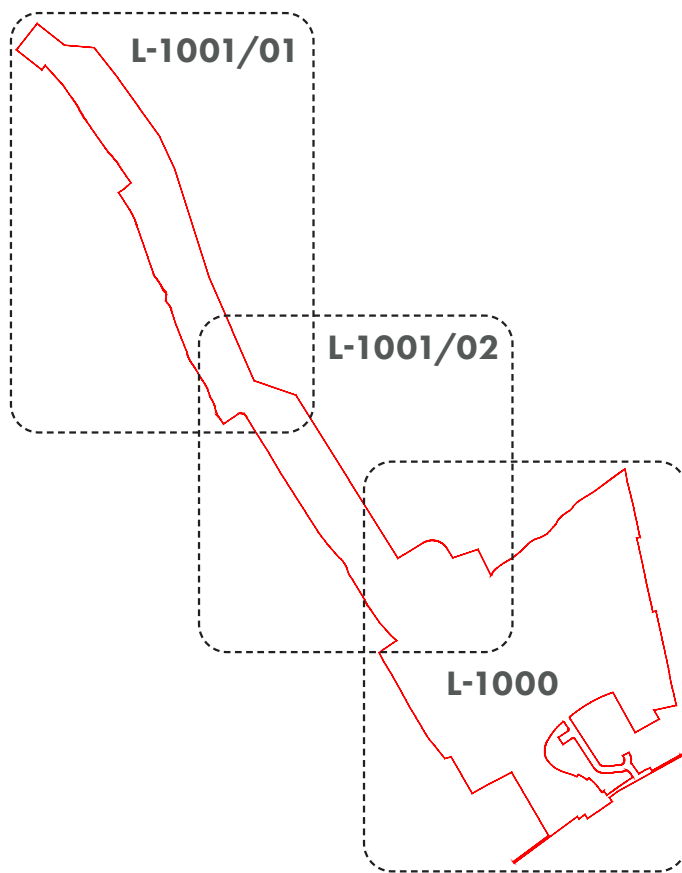
ILLUSTRATIVE MATERIALS PALETTE:

Access road: Macadam  
Shared surface: Burnt Oak colour block paving  
Driveways: Natural colour block paving  
Access paths: Natural colour flag paving

\*Soft and hard landscaping plans / details will be dealt with via pre-commencement conditions



LOCATION PLAN:



REV.	DESCRIPTION	APP.	DATE
PL04	Issued following PRow comments	trb	27.06.2025
PL03	Issued following updates to layout	trb	23.05.2025
PL02	Issued following Architectural updates	trb	15.05.2025
PL01	Issued for Planning	trb	30.04.2025

**fabrik**

PROJECT TITLE  
LAND AT THE OLD VICARAGE FIELD AND THE OLD ESTATE YARD, CHURCH HILL, TURNERS HILL  
DRAWING TITLE

COLOUR LANDSCAPE MASTERPLAN AND STRATEGY

ISSUED BY	Alton	T: 01420 593 250
DATE	APRIL 2025	DRAWN TRB
SCALE@A1	N.T.S	CHECKED AS
STATUS	PLANNING	APPROVED AS

DWG. NO. D3162-FAB-00-XX-DR-L-1000 (SHEET 1 OF 2)

Notes:  
1. This drawing is the property of fabrik ltd. It must not be copied or reproduced without written consent.  
2. Only figured dimensions are to be taken from this drawing. All contractors must visit site and be responsible for taking and checking all dimensions related to the works shown on this drawing.

ILLUSTRATIVE WALL FACING:



A-A: ILLUSTRATIVE SECTION THROUGH RETAINING BANK

RETAINING STRUCTURES TO BE DRAWN BY OTHERS, (ENGINEERS)



BOUNDARY TREATMENTS

DWELLING AND OPEN SPACE BOUNDARIES WILL BE DEFINED USING A VARIETY OF METHODS TO PROVIDE SECURITY WHILST RESPECTING THE SURROUNDING CONTEXT. HEDGEHOG HOLES WILL ALSO BE ADDED TO REAR GARDEN FENCES.

ILLUSTRATIVE BOUNDARIES PALETTE:

- Typical gardens: Timber fencing
- Eastern and southern boundaries: Timber post and rail fence with hedgerow
- Car Parks and Play Areas: Timber bollards and knee rails
- Prominent gardens: Brick walls (To Architects detail)





TREES WITHIN THE NORTHERN PARCEL

TREE PLANTING WILL BE USED WITHIN THE NORTHER PARCEL AS A MEANS OF BOLSTERING THE EXISTING TREE LINED EDGE, ADDING SEASONAL COLOUR AND ENHANCING LOCAL BIODIVERSITY.

ONCE MATURE, THE CANOPIES OF THE TREE PLANTING WILL HELP TO INTERCONNECT THE EXISTING AND PROPOSED PLANTING WITHIN THE WIDER LANDSCAPE SETTING.

ILLUSTRATIVE PLANTING PALETTE:

Trees

Garden:

*Acer rubrum*, *Acer campestre*, *Alnus glutinosa*, *Carpinus betulus*, *Prunus avium*

Local Fruiting Species:

*Mespilus germanica* (Medlar 'Nottingham') *Malus evereste* (Crabapple)



RETAINED VEGETATION

THE SCHEME PROPOSES THE REMOVAL OF A SMALL NUMBER OF TREES, TREE GROUPS AND PART OF THE BOUNDARY HEDGEROWS TO ALLOW ACCESS TO THE SITE.

IN ORDER TO MITIGATE THIS, THE PROPOSALS INCLUDE NEW TREE AND HEDGEROW PLANTING THAT WILL HELP TO REINSTATE THE CHURCH ROAD BOUNDARY, ASSIMILATE THE NEW HOUSING WITHIN THE LANDSCAPE AND TO PRESERVE LOCAL CHARACTER.

THE MAJORITY OF TREES AND TREE GROUPS WILL BE RETAINED, THUS PRESERVING THE EXISTING WIDER LANDSCAPE SETTING TO THE BOUNDARIES.



LEGEND:

1.

RETAINED VEGETATION

2.

REMOVED VEGETATION FOR ACCESS

3.

PROPOSED PLANTING TO SOFTEN AND FRAME THE LANDSCAPE SETTING

4.

NEW OR ENHANCED NATIVE BUFFER HEDGE PLANTING TO MAINTAIN AND STRENGTHEN THE EXISTING FIELD BOUNDARY VERNACULAR AND PROPOSED SWALES

5.

PEDESTRIAN GATE/STYLE AND LOCKABLE VEHICLE GATE ACCESS, FOR MAINTENANCE

6.

REINFORCED TURF ACCESS ROUTE FOR MAINTENANCE

7.

'PLAY ON THE WAY' L.A.P AREAS

8.

SPECIES RICH MEADOW WITH MOWN PATH AND TREE CLUSTERS

9.

DAMP MEADOW MIX TO SWALE AND BASIN PLANTING

10.

TIMBER BOLLARDS TO MITIGATE VEHICULAR ACCESS TO PAVEMENTS, PLAY AREAS AND SWALES

11.

BAT & BIRD BOXES INSTALLED WHERE APPROPRIATE

12.

BUFFER PLANTING FOR DORMOUSE HABITAT

13.

POST & RAIL BOUNDARY TO S.U.D.S BASIN

14.

PUBLIC RIGHT OF WAY CONNECTION (68W) TO BE MAINTAINED AT BOUNDARIES WHERE SUDS SYSTEMS, NATIVE PLANTING AND DAMP MEADOW MIX TERMINATE



ILLUSTRATIVE LANDSCAPE MASTERPLAN (EXTRACT) - NORTHERN SECTION

BOUNDARY PLANTING

THE MAJORITY OF THE BOUNDARY PLANTING WILL BE RETAINED WITH NEW AREAS OF NATIVE OR SCRUB PLANTING PROPOSED TO BETTER SITE THE DEVELOPMENT WITHIN THE EXISTING LANDSCAPE SETTING.

INFILL SECTIONS OF NATIVE PLANTING WILL ENHANCE THE EXISTING BOUNDARY HEDGES AND PROVIDE ADDITIONAL SPECIES FOR DORMOUSE HABITAT CREATION. BAT & BIRD BOXES WILL BE INCLUDED WHERE APPROPRIATE ACROSS THE DEVELOPMENT.

NORTHERN SWALES BOUNDARY

THE NORTHERN BOUNDARIES ADJACENT TO THE SWALES WILL BE DEFINED THROUGH HEDGEROW AND TREE PLANTING REFLECTING THE EXISTING LANDSCAPE CHARACTER WITH TIMBER POST AND RAIL AS FIELD BOUNDARIES TO THE EAST.

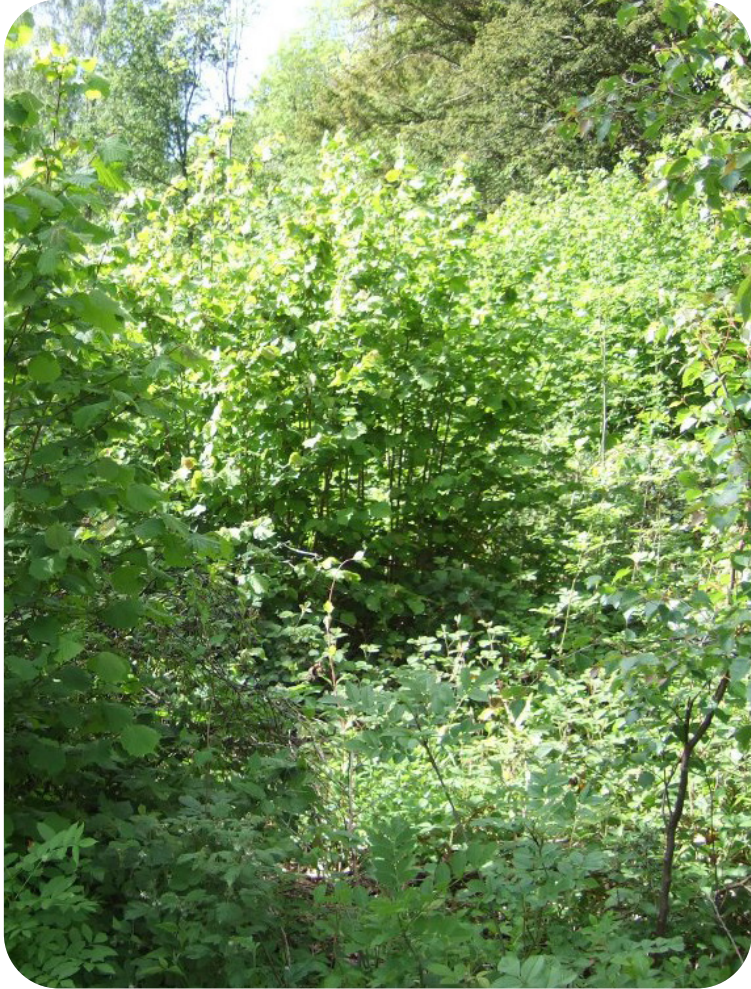
ILLUSTRATIVE PLANTING PALETTE:

Trees

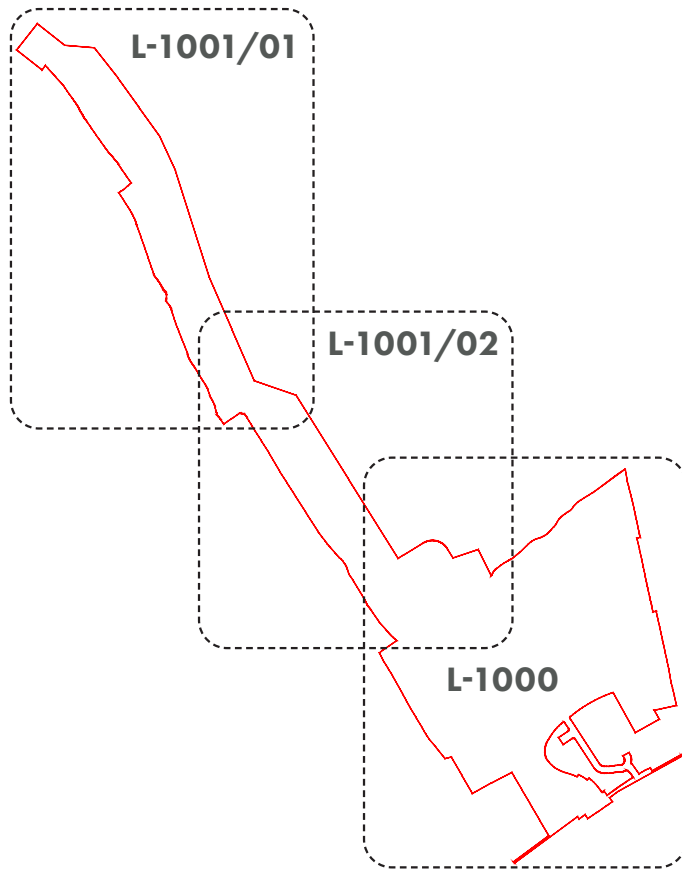
*Acer campestre*, *Betula pubescens*, *Carpinus betulus*

Hedgerow

*Cornus sanguinea*, *Corylus avellana*, *Ligustrum vulgare*, *Ilex aquifolium*, *Viburnum opulus*.



LOCATION PLAN:



REV.	DESCRIPTION	DATE
PL04	Issued following PIRW comments	trb 27.06.2025
PL03	Issued following updates to layout	trb 23.05.2025
PL02	Issued following Architectural updates	trb 15.05.2025
PL01	Issued for Planning	trb 30.04.2025

fabrik

PROJECT TITLE  
LAND AT THE OLD VICARAGE FIELD AND THE OLD ESTATE YARD, CHURCH ROAD, TURNERS HILL  
DRAWING TITLE

ISSUED BY	Alton	T: 01420 593 250
DATE	APRIL 2025	DRAWN TRB
SCALE@A1	N.T.S	CHECKED AS
STATUS	PLANNING	APPROVED AS

DWG. NO. D3162-FAB-00-XX-DR-L-1001 (SHEET 2 OF 2)

Notes:  
1. This drawing is the property of fabrik ltd. It must not be copied or reproduced without written consent.  
2. Only figured dimensions are to be taken from this drawing. All contractors must visit site and be responsible for taking and checking all dimensions related to the works shown on this drawing.

S.U.D.S PROVISION

THE DRAINAGE STRATEGY WILL INCLUDE A SERIES OF INTERCONNECTED SWALES THAT WILL BE PLANTED WITH A MIX OF SPECIES RICH MEADOW AND NATIVE PLANTING APPROPRIATE TO THE SEASONALLY WET CONDITIONS.

THE AIM WILL BE TO CREATE AND MANAGE THE SWALES AND BASIN TO ENHANCE BIODIVERSITY WHILST ENSURING THEY FUNCTION EFFECTIVELY IN TERMS OF SURFACE WATER MANAGEMENT.

THE SURROUNDING MEADOW PLANTING WILL UNIFY THE PROPOSALS WITH THE WIDER LANDSCAPE SETTING.

