

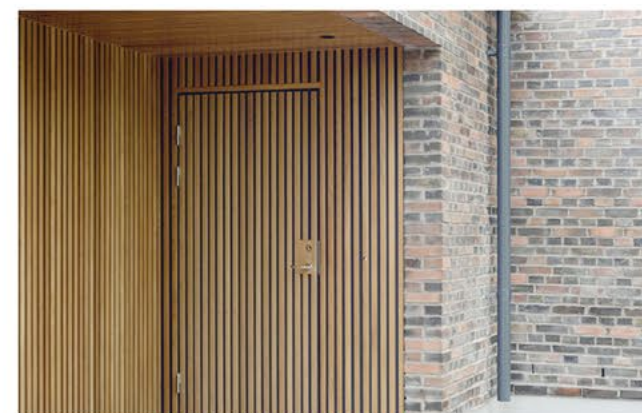
7.1 Design Intent

The majority of the housing in Crawley Down consists of detached and semi-detached homes, reflecting its character as a relatively affluent, low-density settlement. There are also some terraced houses and bungalows, as well as newer residential estates that have been developed in response to housing demand.

The traditional materials in Crawley Down reflect those of the wider Sussex region: red brick, timber framing, and weatherboarding, often with clay-tiled or slate roofs. However, there are multiple contemporary homes in the area which gives the opportunity to do something similar on this site.



BEDDED EAVES, WINDOW DETAILING & DEEP REVEAL



VERTICAL PANELLING DOOR



BUFF BRICK & PERFORATION



HOUSE TYPE CONCEPT



HOUSE TYPE CONCEPT

7.2 CGIs



7.2 CGIs



7.2 CGIs



7.2 CGIs



7.2 CGIs



7.2 CGIs



7.2 CGIs



7.2 CGIs



7.2 CGIs



7.2 CGIs



7.3 Aerial Views



7.3 Aerial Views



7.3 Aerial Views



7.3 Aerial Views



