

The scaling of this drawing cannot be assured				
Revision		Date	Drm	Ckd
A	Amendments to proposals following comment	26/03/24		AP
B	Amendments to changing pavillion	13/11/24	NG	AP

Schedule of Accommodation

Sports - in line with Sport England and ECB guidance.
2no. Changing rooms with seating upto 20 people in each with and 4no cubicle showers

2no. Official changing room with seating upto 3 people and 1no shower.

Unisex accessible toilet

Storage and allowance for lockers (including externally accessible equipment store)

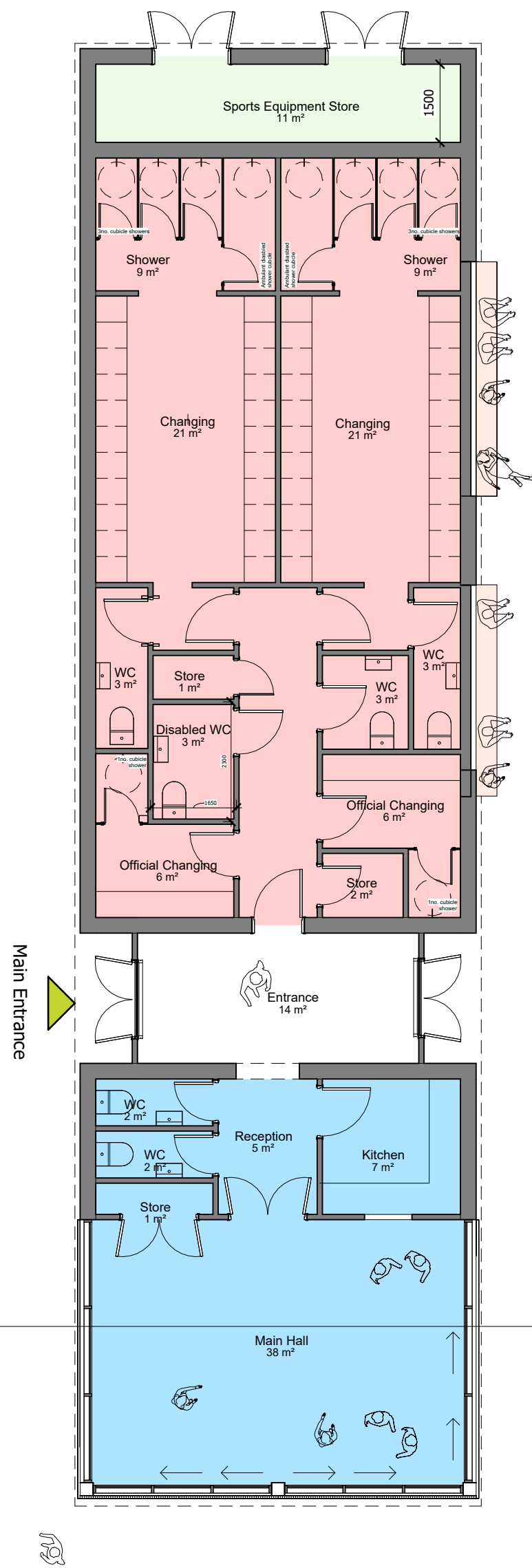
Hall
Multi use hall space @ 38sqm (circa 5 x 7m)

Kitchen with hatch through to hall space

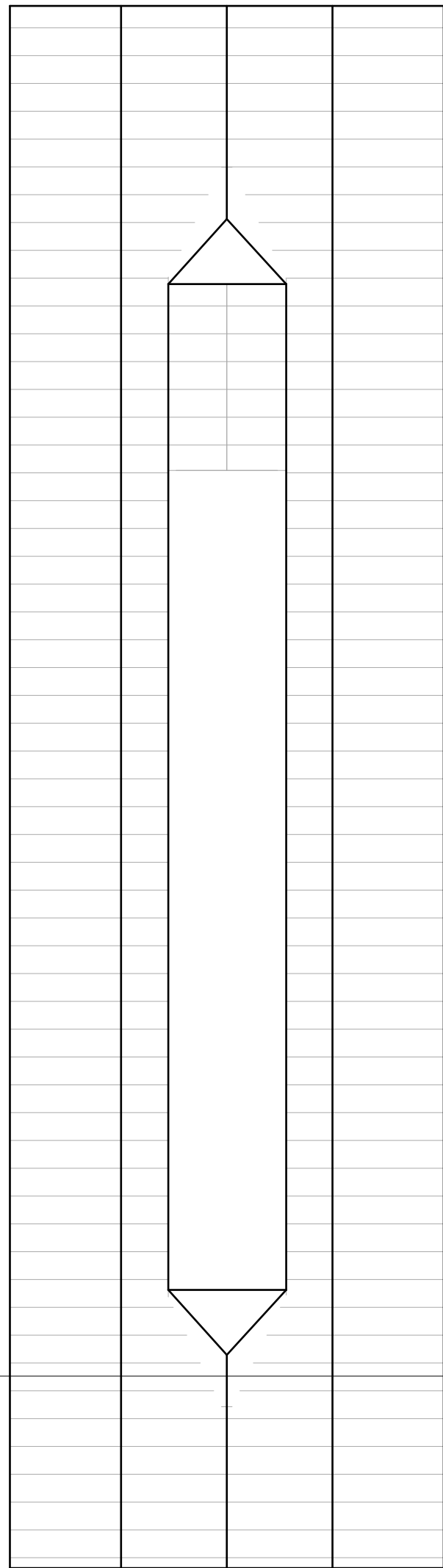
2no. unisex toilets

Storage facilities

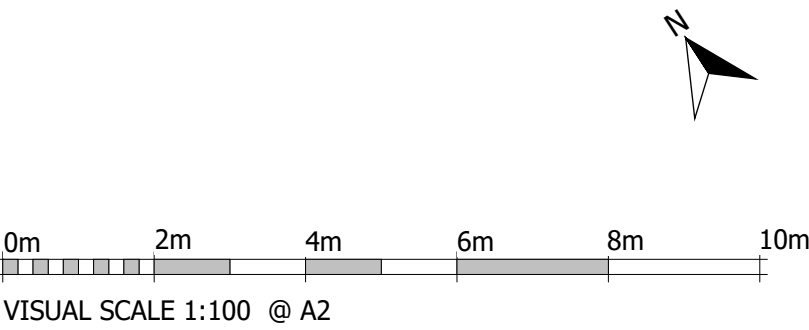
Building GIA: 185sqm



1 00 Ground Floor SCALE 1 : 100



2 01 Roof Plan SCALE 1 : 100



PLANNING

Project
Sports Pavilion -
Imberhome Farm, East Grinstead
Drawing Title
GA Ground Floor & Roof Plan

Date 04/27/22 Scale 1 : 100 @ A2 Drawn by EB Check by AP

Project No 25626 - STC - XX - 00 - DR - A - 11000 Revision B

BARTON WILLMORE now Stantec

Town Planning • Masterplanning & Urban Design • Architecture •
Landscape Planning & Design • Infrastructure & Environmental
Planning • Heritage • Graphic Communication •
Communications & Engagement • Development Economics

bartonwillmore.co.uk bsi ISO 9001 Quality Management